

# Under Martial Law (XG)

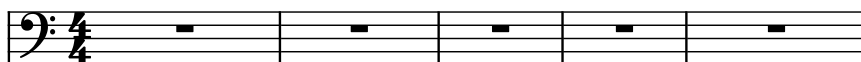
Composer: Nobuo Uematsu

Game: Final Fantasy III

[pianogame.org](http://pianogame.org)

♩ = 130

Bass Guitar, 35 -- Picked Bass



Strings, 50 -- String Ensemble 2 (Left)



Strings, 50 -- String Ensemble 2 (Right)



6

B. Guit.



St.

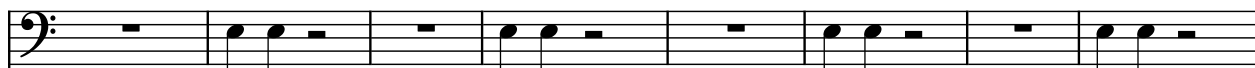


St.



14

B. Guit.



St.

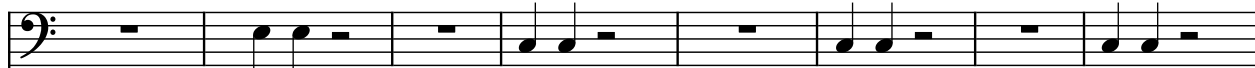


St.



22

B. Guit.



St.

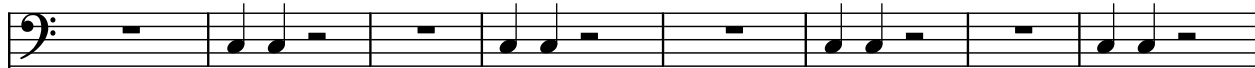


St.



30

B. Guit.



St.



St.



38

B. Guit.

St.

St.

Measures 38-45: B. Guit. (bass clef) plays a steady eighth-note pattern. St. (treble clef) and St. (bass clef) play a melodic line with slurs and ties.

46

B. Guit.

St.

St.

Measures 46-53: B. Guit. (bass clef) continues the eighth-note pattern. St. (treble clef) and St. (bass clef) continue the melodic line with slurs and ties.

54

B. Guit.

St.

St.

Measures 54-61: B. Guit. (bass clef) continues the eighth-note pattern. St. (treble clef) and St. (bass clef) continue the melodic line with slurs and ties.

62

B. Guit.

St.

St.

Measures 62-69: B. Guit. (bass clef) continues the eighth-note pattern. St. (treble clef) and St. (bass clef) continue the melodic line with slurs and ties.

70

B. Guit.

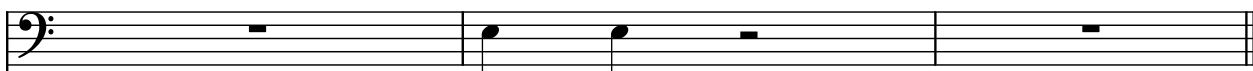
St.

St.

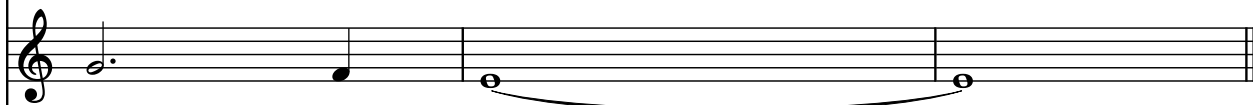
Measures 70-77: B. Guit. (bass clef) continues the eighth-note pattern. St. (treble clef) and St. (bass clef) continue the melodic line with slurs and ties.

78

B. Guit.



St.



St.

