

Main Theme (2) (v2.0+)

Composer: Jeroen Tel

Game: Cybernoid 2

pianogame.org

♩ = 135

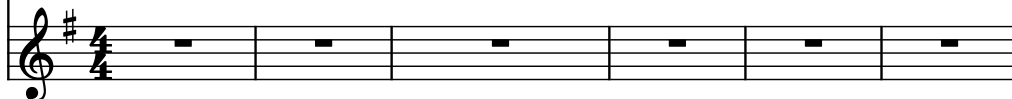
Saw Synthesizer, Lead 1a



Effect Synthesizer, Lead 1b



Brass Synthesizer, Lead 2a



7

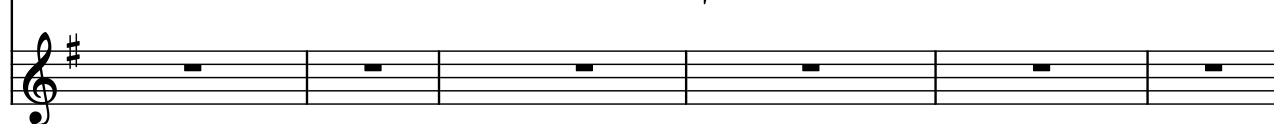
Synth.



Synth.

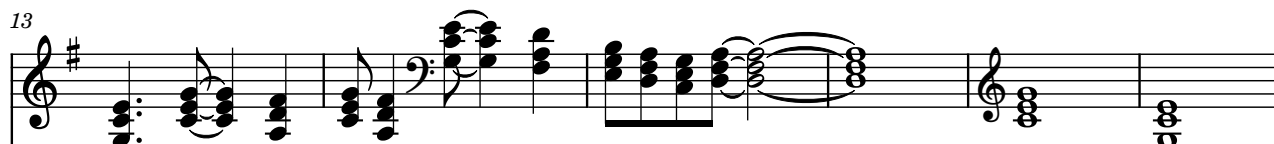


Synth.

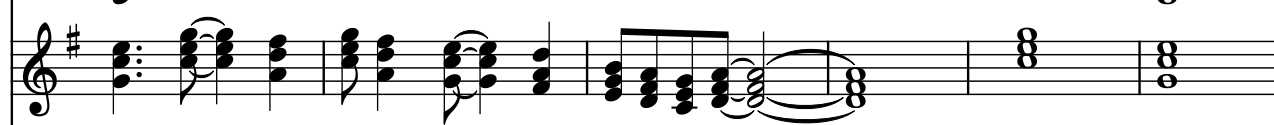


13

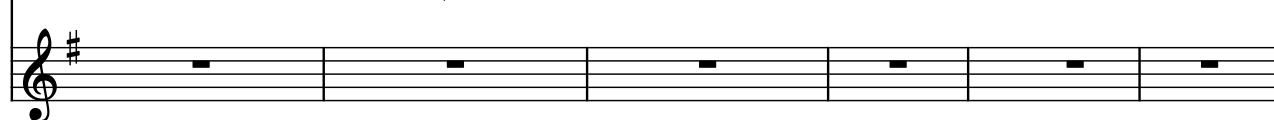
Synth.



Synth.

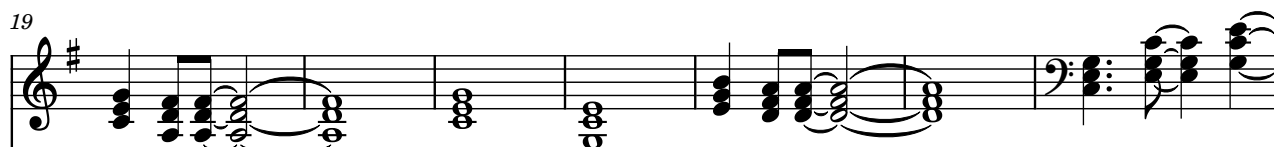


Synth.

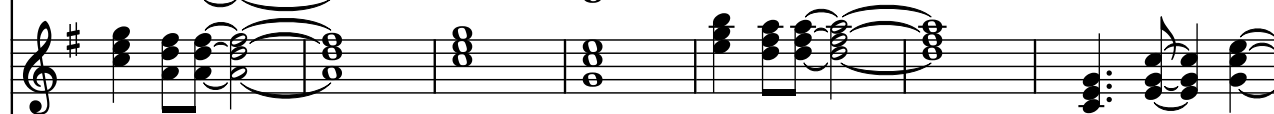


19

Synth.



Synth.



Synth.



26

Synth.

Synth.

Synth.

32

Synth.

Synth.

Synth.

35

Synth.

Synth.

Synth.

38

Synth.

Synth.

Synth.

41

Synth.

Synth.

Synth.

44

Three staves of music, all in G major (one sharp). The top staff is in bass clef, the middle and bottom staves are in treble clef. The bottom staff plays a continuous eighth-note chordal pattern. The top two staves play a melody starting in the second half of the measure.

47

The image shows a musical score for three staves, all labeled 'Synth.'. The key signature is one sharp (F#). The top two staves have a melody consisting of a long slur over two measures, followed by a series of eighth and sixteenth notes. The bottom staff has a rhythmic accompaniment of chords, with a 'y' mark above the first chord of each measure.

50

Three staves of music, each labeled 'Synth.' on the left. The key signature is one sharp (F#), indicating G major. The top staff features a melody with eighth and quarter notes. The middle staff provides a harmonic accompaniment with eighth and quarter notes. The bottom staff consists of a continuous sequence of chords, primarily triads and dyads, marked with 'y' (likely for 'yamaha' or 'yes' in a software context).

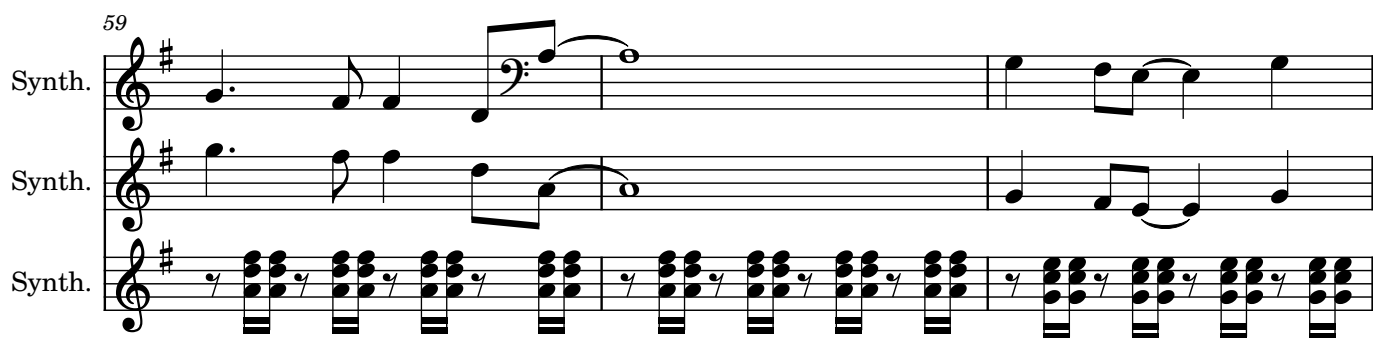
53

Three staves of music, all labeled 'Synth.' on the left. The key signature is G major (one sharp, F#). The time signature is 4/4. The first staff uses a bass clef and the second uses a treble clef. The third staff uses a treble clef and features a bass line with chords. The music consists of a melodic line in the first two staves and a bass line with chords in the third staff.

56

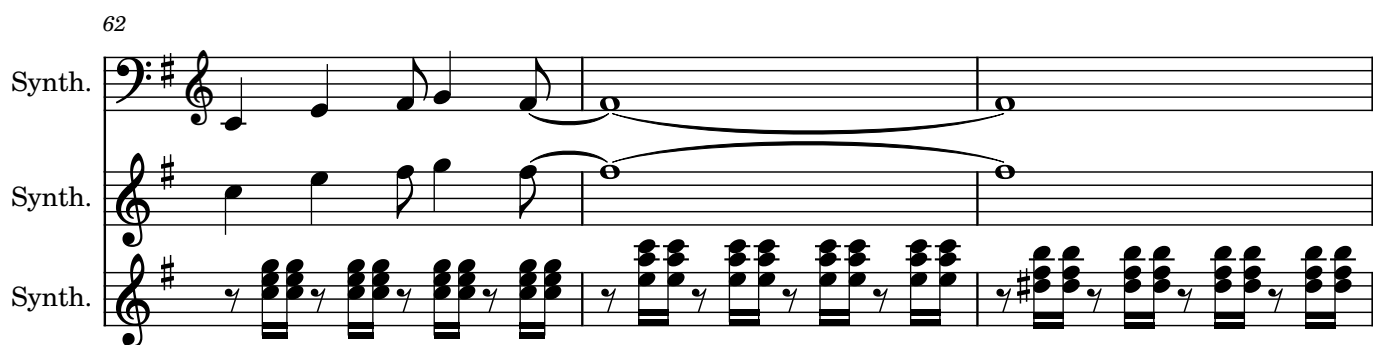
59

Synth.



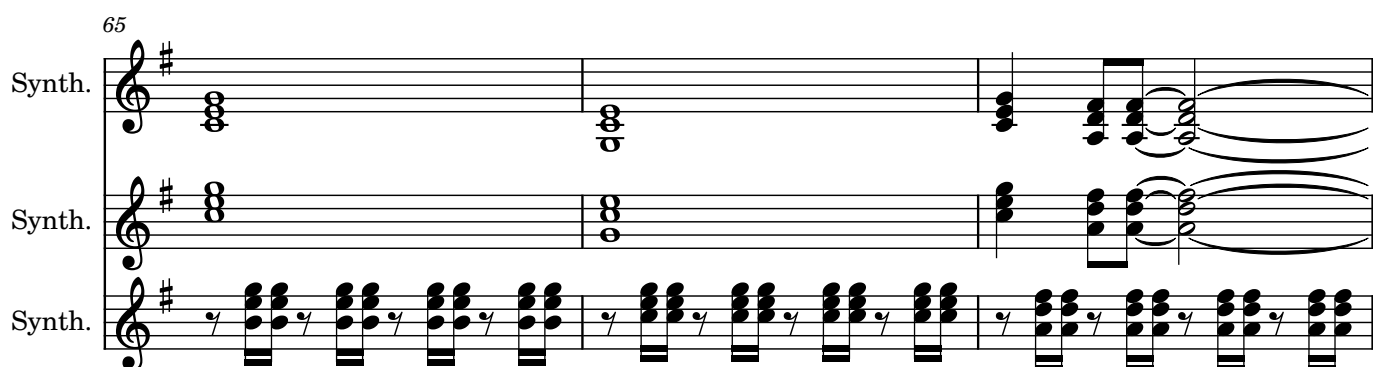
62

Synth.



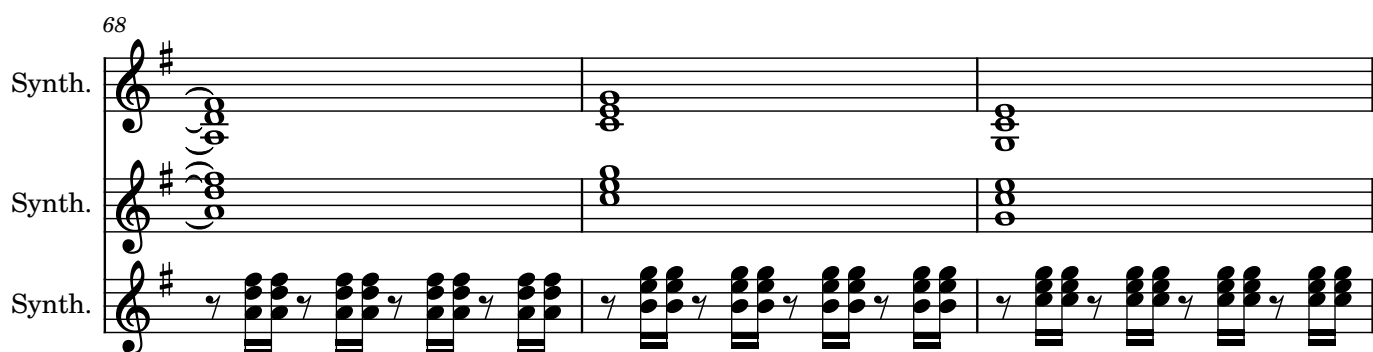
65

Synth.



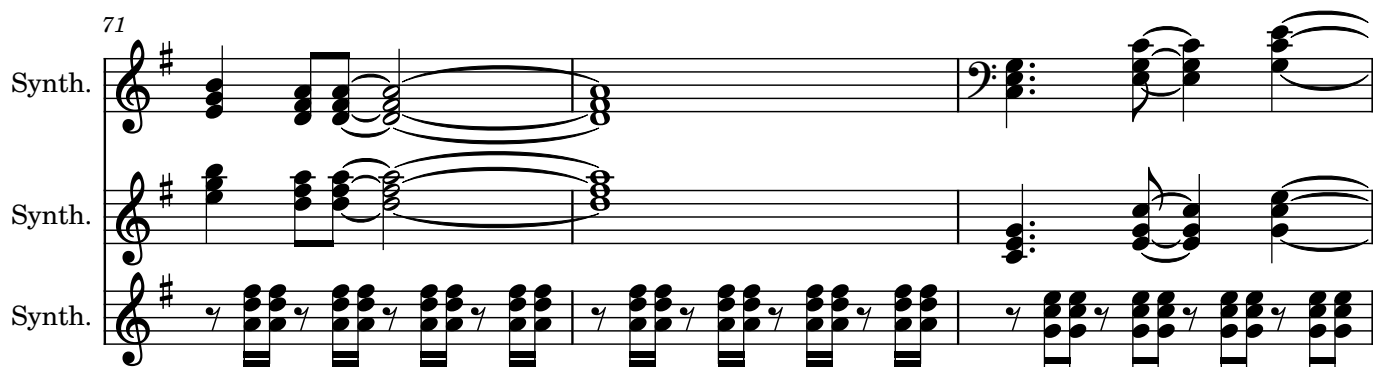
68

Synth.



71

Synth.



74

Synth.

Synth.

Synth.

77

Synth.

Synth.

Synth.

80

Synth.

Synth.

Synth.

82

Synth.

Synth.

Synth.

84

Synth.

Synth.

Synth.

86

Synth. 

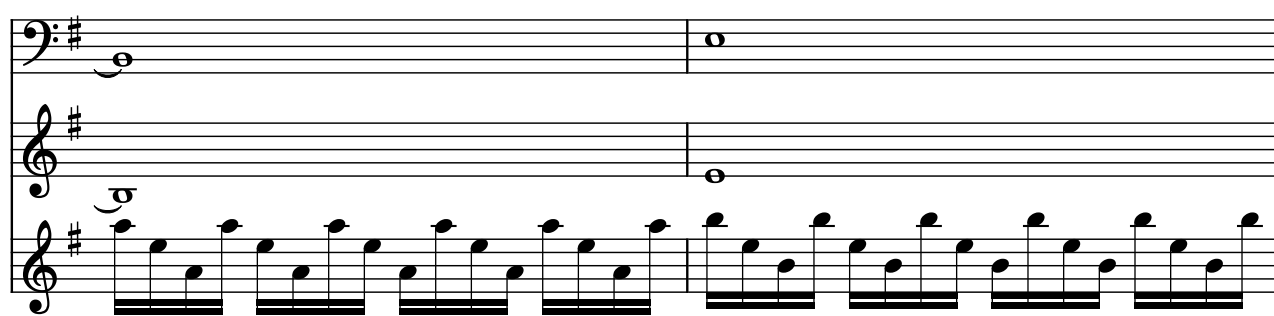
88

Synth. 

90

Synth. 

92

Synth. 

94

Synth. 

96



Synth.

98

Synth.

100

Synth.

102

Synth.

104

Synth.

Three staves of music. The top staff is in bass clef, the middle in treble, and the bottom in treble. All have a key signature of one sharp (F#). The bottom staff features a rhythmic pattern of eighth-note chords.

106

Synth.

Three staves of music. The top staff is in bass clef, the middle in treble, and the bottom in treble. All have a key signature of one sharp (F#). The bottom staff features a rhythmic pattern of eighth-note chords.

108

Synth.

Three staves of music. The top staff is in bass clef, the middle in treble, and the bottom in treble. All have a key signature of one sharp (F#). The bottom staff features a rhythmic pattern of eighth-note chords.

110

Synth.

Three staves of music. The top staff is in bass clef, the middle in treble, and the bottom in treble. All have a key signature of one sharp (F#). The bottom staff features a rhythmic pattern of eighth-note chords.

112

Synth.

Synth.

Synth.

116

Synth.

Synth.

Synth.

118

Synth.

Synth.

Synth.

120

Synth.

Synth.

Synth.

122

Synth.

Synth.

Synth.

124

Synth.

Two staves of music for measures 124 and 125. The top staff (labeled 'Synth.') contains a melody in treble clef with a key signature of one sharp (F#). The bottom staff (also labeled 'Synth.') contains a rhythmic accompaniment consisting of eighth-note chords. Both staves have a treble clef and a key signature of one sharp.

126

Synth.

Two staves of music for measures 126 and 127. The top staff (labeled 'Synth.') contains a melody in treble clef with a key signature of one sharp (F#). The bottom staff (also labeled 'Synth.') contains a rhythmic accompaniment consisting of eighth-note chords. Both staves have a treble clef and a key signature of one sharp.

128

Synth.

Two staves of music for measures 128 and 129. The top staff (labeled 'Synth.') contains a melody in treble clef with a key signature of one sharp (F#). The bottom staff (also labeled 'Synth.') contains a rhythmic accompaniment consisting of eighth-note chords. Both staves have a treble clef and a key signature of one sharp.

130

Synth.

Two staves of music for measures 130 and 131. The top staff (labeled 'Synth.') contains a melody in treble clef with a key signature of one sharp (F#). The bottom staff (also labeled 'Synth.') contains a rhythmic accompaniment consisting of eighth-note chords. Both staves have a treble clef and a key signature of one sharp.

132

Synth.

Three staves of music. The top staff is in bass clef, the middle in treble, and the bottom in treble. All are in G major. The top staff has a melodic line with eighth and quarter notes. The middle staff has a similar melodic line. The bottom staff has a rhythmic pattern of eighth-note chords.

134

Synth.

Three staves of music. The top staff is in bass clef, the middle in treble, and the bottom in treble. All are in G major. The top staff has a melodic line with eighth and quarter notes. The middle staff has a similar melodic line. The bottom staff has a rhythmic pattern of eighth-note chords.

136

Synth.

Three staves of music. The top staff is in bass clef, the middle in treble, and the bottom in treble. All are in G major. The top staff has a melodic line with eighth and quarter notes. The middle staff has a similar melodic line. The bottom staff has a rhythmic pattern of eighth-note chords.

138

Synth.

Three staves of music. The top staff is in bass clef, the middle in treble, and the bottom in treble. All are in G major. The top staff has a melodic line with eighth and quarter notes. The middle staff has a similar melodic line. The bottom staff has a rhythmic pattern of eighth-note chords.

142

Synth.

Synth.

Synth.

144

Synth.

Synth.

Synth.

146

Synth.

Synth.

Synth.

148

Synth.

Synth.

Synth.

150

Synth.

Synth.

Synth.

152

Synth.

Three staves of music in G major. The top staff (Synth.) has a treble clef and contains a half note G4, followed by eighth notes A4, B4, and C5, and a quarter note B4. The middle staff (Synth.) has a treble clef and contains a half note G4, followed by eighth notes A4, B4, and C5, and a quarter note B4. The bottom staff (Synth.) has a treble clef and contains a continuous eighth-note pattern of G4, A4, B4, and C5.

154

Synth.

Three staves of music in G major. The top staff (Synth.) has a treble clef and contains a half note G4, followed by eighth notes A4, B4, and C5, and a quarter note B4. The middle staff (Synth.) has a treble clef and contains a half note G4, followed by eighth notes A4, B4, and C5, and a quarter note B4. The bottom staff (Synth.) has a treble clef and contains a continuous eighth-note pattern of G4, A4, B4, and C5.

156

Synth.

Three staves of music in G major. The top staff (Synth.) has a treble clef and contains a half note G4, followed by eighth notes A4, B4, and C5, and a quarter note B4. The middle staff (Synth.) has a treble clef and contains a half note G4, followed by eighth notes A4, B4, and C5, and a quarter note B4. The bottom staff (Synth.) has a treble clef and contains a continuous eighth-note pattern of G4, A4, B4, and C5.

158

Synth.

Three staves of music in G major. The top staff (Synth.) has a treble clef and contains a half note G4, followed by eighth notes A4, B4, and C5, and a quarter note B4. The middle staff (Synth.) has a treble clef and contains a half note G4, followed by eighth notes A4, B4, and C5, and a quarter note B4. The bottom staff (Synth.) has a treble clef and contains a continuous eighth-note pattern of G4, A4, B4, and C5.

160

Synth.

This system contains measures 160 and 161. The first staff (bass clef) has a melodic line starting on G4, moving up to A4, B4, C5, and then down to B4, A4, G4. The second staff (treble clef) has a melodic line starting on G4, moving up to A4, B4, C5, and then down to B4, A4, G4. The third staff (treble clef) has a rhythmic accompaniment of eighth notes, with a pattern of eighth notes and eighth rests.

162

Synth.

This system contains measures 162 and 163. The first staff (bass clef) has a melodic line starting on G4, moving up to A4, B4, C5, and then down to B4, A4, G4. The second staff (treble clef) has a melodic line starting on G4, moving up to A4, B4, C5, and then down to B4, A4, G4. The third staff (treble clef) has a rhythmic accompaniment of eighth notes, with a pattern of eighth notes and eighth rests.

164

Synth.

This system contains measures 164 and 165. The first staff (bass clef) has a melodic line starting on G4, moving up to A4, B4, C5, and then down to B4, A4, G4. The second staff (treble clef) has a melodic line starting on G4, moving up to A4, B4, C5, and then down to B4, A4, G4. The third staff (treble clef) has a rhythmic accompaniment of eighth notes, with a pattern of eighth notes and eighth rests.

166

Synth.

This system contains measures 166 and 167. The first staff (bass clef) has a melodic line starting on G4, moving up to A4, B4, C5, and then down to B4, A4, G4. The second staff (treble clef) has a melodic line starting on G4, moving up to A4, B4, C5, and then down to B4, A4, G4. The third staff (treble clef) has a rhythmic accompaniment of eighth notes, with a pattern of eighth notes and eighth rests.

168

Synth.

Synth.

Synth.

170

Synth.

Synth.

Synth.

172

Synth.

Synth.

Synth.

175

Synth.

Synth.

Synth.

176

Synth.

Synth.

Synth.

177

Synth.

Synth.

Synth.

179

Synth.

Synth.

Synth.