

# Cry in Sorrow

Composer: Nobuo Uematsu

Game: Final Fantasy II

[pianogame.org](http://pianogame.org)

♩ = 80

Measures 1-3 of the piece. The key signature is E-flat major (three flats). The time signature is 4/4. The music features a complex melody in the right hand with many beamed sixteenth and thirty-second notes, and a more rhythmic accompaniment in the left hand.

4

Measures 4-7. The melody in the right hand continues with sustained notes and some movement, while the left hand plays a steady eighth-note accompaniment.

8

Measures 8-11. The right hand features a melodic line with some slurs, and the left hand continues with eighth-note patterns, including some triplets.

12

Measures 12-15. The right hand has a more active melody with some rests, while the left hand plays a consistent eighth-note accompaniment.

16

Measures 16-19. The right hand melody includes a long slur across measures 17 and 18, and the left hand continues with eighth-note accompaniment.

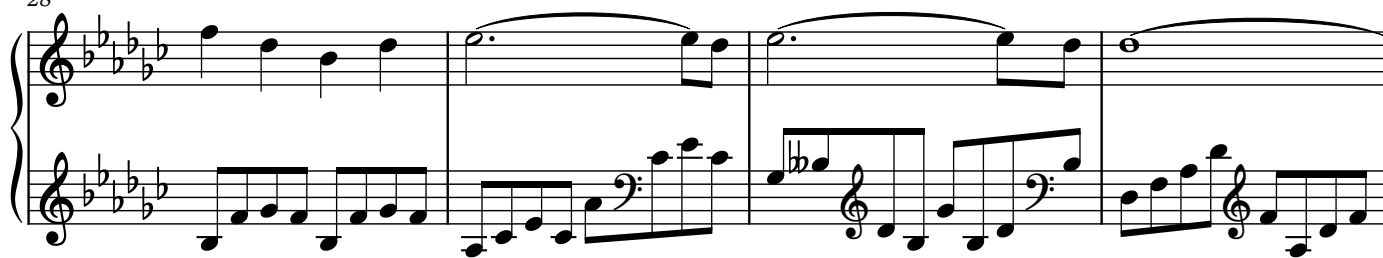
20

Measures 20-23. The right hand features a melodic line with a slur, and the left hand continues with eighth-note accompaniment, including some triplet figures.

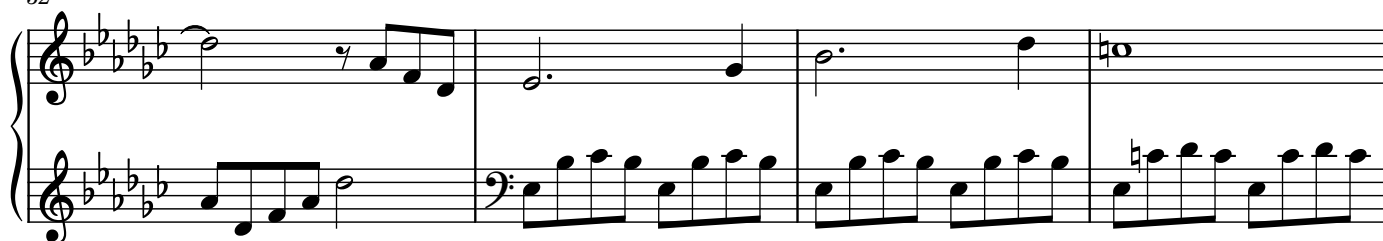
24

Measures 24-27. The right hand melody consists of sustained notes, and the left hand plays a steady eighth-note accompaniment.

28



32



36



40

