

Big Show Intro

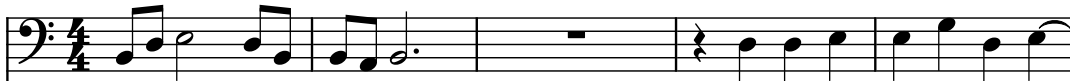
Composer: Tommy Tallarico

Game: Wrestlemania 2000

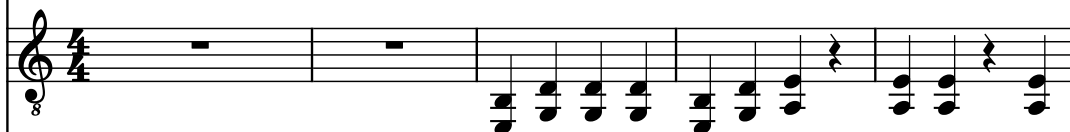
pianogame.org

♩ = 230

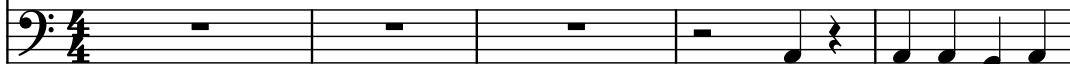
Effect Synthesizer, tk1



Electric Guitar, tk2



Bass Guitar, tk3



6

Synth.



El. Guit.



B. Guit.



13

Synth.



El. Guit.



B. Guit.



19

Synth.



El. Guit.



B. Guit.



24

Synth.

El. Guit.

B. Guit.

Measures 24-30: Synth. is in bass clef, mostly silent. El. Guit. is in treble clef with a capo at the 8th fret, playing chords and single notes. B. Guit. is in bass clef, playing a steady eighth-note bass line.

31

Synth.

El. Guit.

B. Guit.

Measures 31-37: Synth. is in bass clef, playing a melodic line. El. Guit. is in treble clef with a capo at the 8th fret, playing chords and single notes. B. Guit. is in bass clef, playing a steady eighth-note bass line.

38

Synth.

El. Guit.

B. Guit.

Measures 38-43: Synth. is in bass clef, playing a melodic line. El. Guit. is in treble clef with a capo at the 8th fret, playing chords and single notes. B. Guit. is in bass clef, playing a steady eighth-note bass line.

44

Synth.

El. Guit.

B. Guit.

Measures 44-50: Synth. is in bass clef, mostly silent. El. Guit. is in treble clef with a capo at the 8th fret, playing chords and single notes. B. Guit. is in bass clef, playing a steady eighth-note bass line.

51

Synth.    

El. Guit.    

B. Guit.    

58

Synth.    

El. Guit.    

B. Guit.    





65


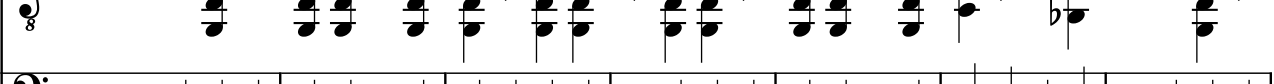


Synth.    





El. Guit.    

B. Guit.    

70

Synth.    

El. Guit.    

B. Guit.    

84

90

90

Synth.

El. Guit.

B. Guit.

8