

Boss Battle

Composer: Takanori Arisawa

Game: Sailor Moon: Another Story (Japan)

pianogame.org

♩ = 149

Saw Synthesizer, Sailormoon:



Ondes Martenot, Another Story



String Synthesizer, Normal



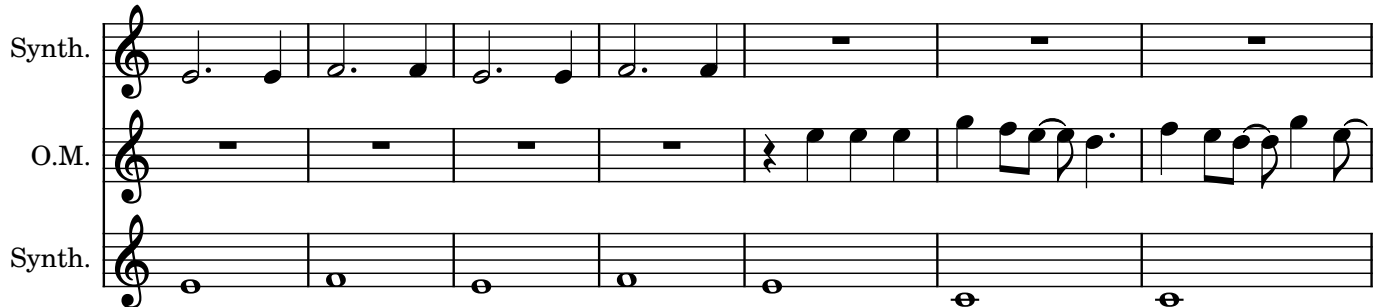
9



14



18



25



30

Synth.

O.M.

Synth.

System 1 (measures 30-34):

- Synth. (top): Five measures of whole rests.
- O.M. (middle): Five measures of eighth-note patterns.
- Synth. (bottom): Five measures of whole notes.

35

Synth.

O.M.

Synth.

System 2 (measures 35-40):

- Synth. (top): Six measures of whole rests.
- O.M. (middle): Six measures of eighth-note patterns.
- Synth. (bottom): Six measures of whole notes.

41

Synth.

O.M.

Synth.

System 3 (measures 41-46):

- Synth. (top): Six measures of whole rests.
- O.M. (middle): Six measures of whole rests.
- Synth. (bottom): Six measures of whole rests.

47

Synth.

O.M.

Synth.

System 4 (measures 47-50):

- Synth. (top): Four measures of eighth-note patterns.
- O.M. (middle): Four measures of whole rests.
- Synth. (bottom): Four measures of whole rests.

51

Synth.

O.M.

Synth.

System 5 (measures 51-54):

- Synth. (top): Four measures of eighth-note patterns.
- O.M. (middle): Four measures of whole rests.
- Synth. (bottom): Four measures of whole notes.

56

Synth. O.M. Synth.

Measures 56-61. The Synth. part consists of a melodic line in the first staff and a sustained bass line in the third staff. The O.M. part features a complex melodic line in the middle staff.

62

Synth. O.M. Synth.

Measures 62-66. The Synth. part consists of a sustained bass line in the third staff. The O.M. part features a complex melodic line in the middle staff.

67

Synth. O.M. Synth.

Measures 67-71. The Synth. part consists of a sustained bass line in the third staff. The O.M. part features a complex melodic line in the middle staff.

72

Synth. O.M. Synth.

Measures 72-74. The Synth. part consists of a sustained bass line in the third staff. The O.M. part features a complex melodic line in the middle staff.