

# **Stage 6: The Castle of the Emperor (2)**

Composer: Mari Yamaguchi

Game: Super Ghouls & Ghosts

[pianogame.org](http://pianogame.org)

♩ = 160

Violins (section), Ghouls and ghosts



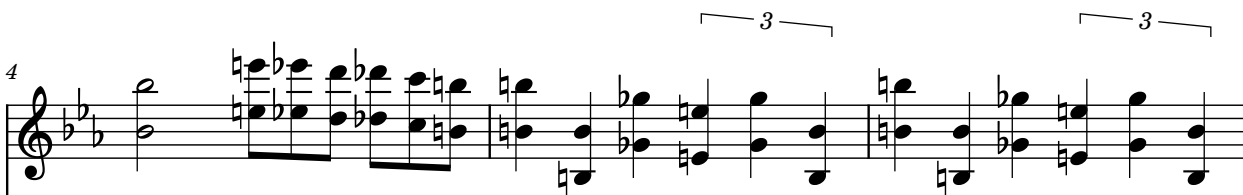
Contrabass Ophicleide, Stage 6



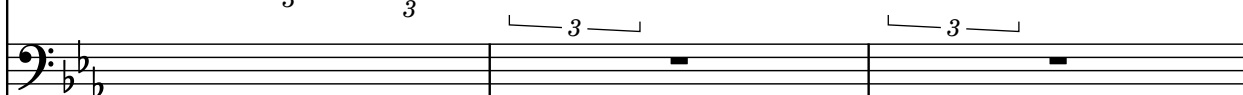
Rag Dung, Sequenced by Seph.3



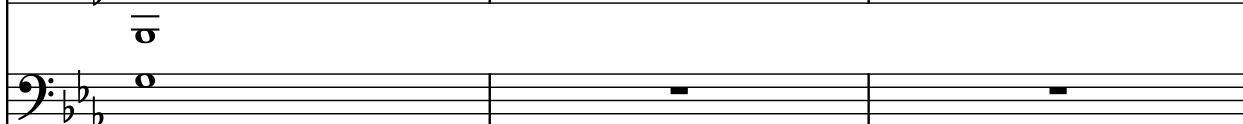
Vlins.



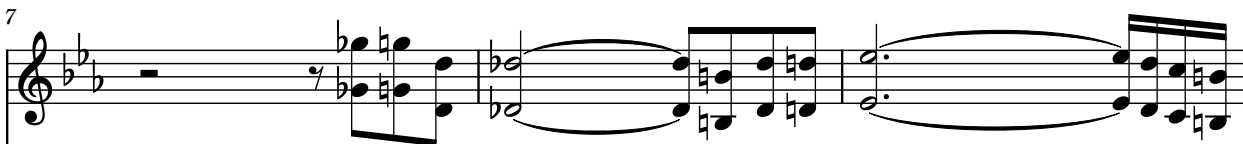
Cb. Oph.



Rg. Dng.



Vlins.



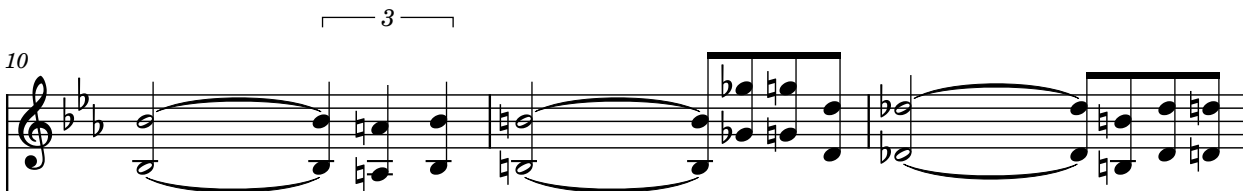
Cb. Oph.



Rg. Dng.



Vlins.



Cb. Oph.



Rg. Dng.



3

3

13

Vlns.

Cb. Oph.

Rg. Dng.

3

3

3

16

Vlns.

Cb. Oph.

Rg. Dng.

19

Vlns.

Cb. Oph.

Rg. Dng.

3

3

3

3

3

3

23

Vlns.

Cb. Oph.

Rg. Dng.

26

Vlns.

Cb. Oph.

Rg. Dng.

29

Vlns.

Cb. Oph.

Rg. Dng.

3

32

Vlns.

Cb. Oph.

Rg. Dng.

3

3

3

3

35

Vlms.

Cb. Oph.

Rg. Dng.

3

3

3

3

38

Vlms.

Cb. Oph.

Rg. Dng.

3

3

3

3