

Hideout Helm Lobby

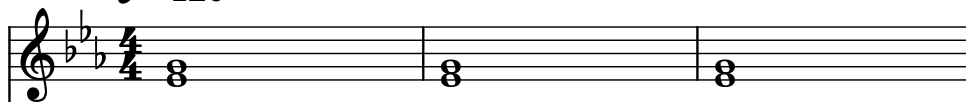
Composer: Grant Kirkhope

Game: Donkey Kong 64

pianogame.org

♩ = 120

Violins (section), Track 1



Contrabasses (section), Track 2

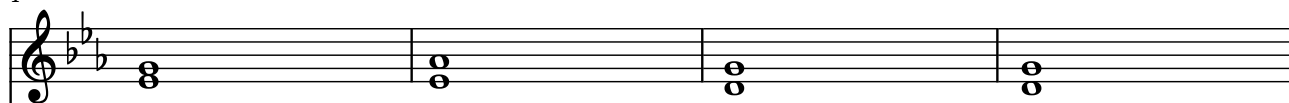


Violoncellos (section), Track 3



4

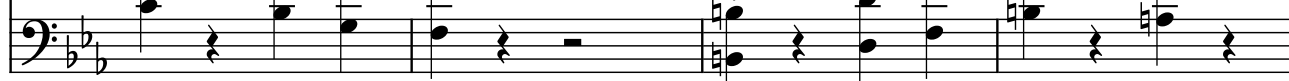
Vlns.



Cbs.

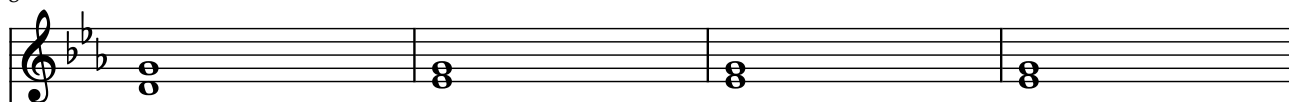


Vcs.



8

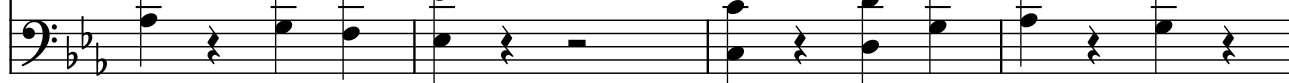
Vlns.



Cbs.

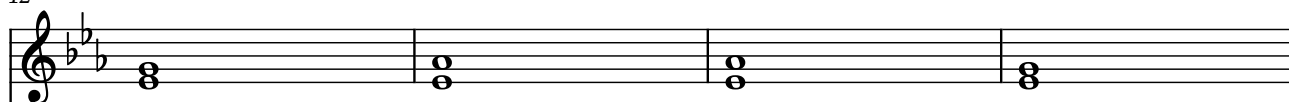


Vcs.



12

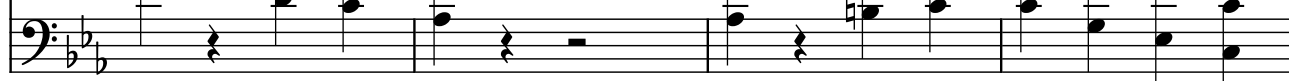
Vlns.



Cbs.



Vcs.



16

16

Vlns.

Cbs.

Vcs.

Measures 16-19: Violins play chords (F4, Bb4, D5, F5) in the first measure, then octaves (F4, Bb4) in the second, and octaves (F4, Bb4) in the third and fourth. Cellos play a continuous eighth-note pattern (F3, G3, A3, Bb3, C4, D4, E4, F4). Double Basses play a sparse eighth-note pattern (F2, G2, A2, Bb2, C3, D3, E3, F3) in the first measure, then octaves (F2, Bb2) in the second, and octaves (F2, Bb2) in the third and fourth.

20

20

Vlns.

Cbs.

Vcs.

Measures 20-23: Violins play chords (F4, Bb4, D5, F5) in the first measure, then octaves (F4, Bb4) in the second, and octaves (F4, Bb4) in the third and fourth. Cellos play a continuous eighth-note pattern (F3, G3, A3, Bb3, C4, D4, E4, F4). Double Basses play a sparse eighth-note pattern (F2, G2, A2, Bb2, C3, D3, E3, F3) in the first measure, then octaves (F2, Bb2) in the second, and octaves (F2, Bb2) in the third and fourth.

24

24

Vlns.

Cbs.

Vcs.

Measures 24-27: Violins play chords (F4, Bb4, D5, F5) in the first measure, then octaves (F4, Bb4) in the second, and octaves (F4, Bb4) in the third and fourth. Cellos play a continuous eighth-note pattern (F3, G3, A3, Bb3, C4, D4, E4, F4). Double Basses play a sparse eighth-note pattern (F2, G2, A2, Bb2, C3, D3, E3, F3) in the first measure, then octaves (F2, Bb2) in the second, and octaves (F2, Bb2) in the third and fourth.

28

28

Vlns.

Cbs.

Vcs.

Measures 28-31: Violins play chords (F4, Bb4, D5, F5) in the first measure, then octaves (F4, Bb4) in the second, and octaves (F4, Bb4) in the third and fourth. Cellos play a continuous eighth-note pattern (F3, G3, A3, Bb3, C4, D4, E4, F4). Double Basses play a sparse eighth-note pattern (F2, G2, A2, Bb2, C3, D3, E3, F3) in the first measure, then octaves (F2, Bb2) in the second, and octaves (F2, Bb2) in the third and fourth.

32

32

Vlns.

Cbs.

Vcs.

Measures 32-35: Violins play chords (F4, Bb4, D5, F5) in the first measure, then octaves (F4, Bb4) in the second, and octaves (F4, Bb4) in the third and fourth. Cellos play a continuous eighth-note pattern (F3, G3, A3, Bb3, C4, D4, E4, F4). Double Basses play a sparse eighth-note pattern (F2, G2, A2, Bb2, C3, D3, E3, F3) in the first measure, then octaves (F2, Bb2) in the second, and octaves (F2, Bb2) in the third and fourth.

36

Vlns.

Cbs.

Vcs.

40

Vlns.

Cbs.

Vcs.

[illegible]

48

Vlns.

Cbs.

Vcs.

52

52

Vlns.

Cbs.

Vcs.

Violins (Vlns.) play sustained chords in the treble clef. Cellos (Cbs.) play a continuous eighth-note pattern in the bass clef. Double basses (Vcs.) play a sparse accompaniment in the bass clef.

56

56

Vlns.

Cbs.

Vcs.

Violins (Vlns.) play a moving line in the treble clef. Cellos (Cbs.) continue with a continuous eighth-note pattern in the bass clef. Double basses (Vcs.) play a sparse accompaniment in the bass clef.

60

60

Vlns.

Cbs.

Vcs.

Violins (Vlns.) play sustained chords in the treble clef. Cellos (Cbs.) continue with a continuous eighth-note pattern in the bass clef. Double basses (Vcs.) play a sparse accompaniment in the bass clef.

64

64

Vlns.

Cbs.

Vcs.

Violins (Vlns.) play sustained chords in the treble clef. Cellos (Cbs.) continue with a continuous eighth-note pattern in the bass clef. Double basses (Vcs.) play a sparse accompaniment in the bass clef.

68

68

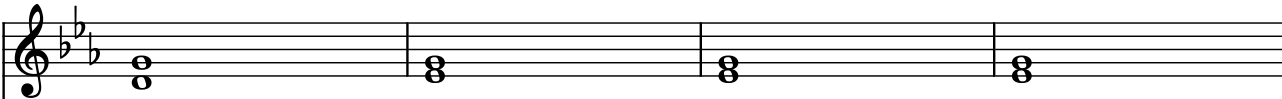
Vlns.


Cbs.

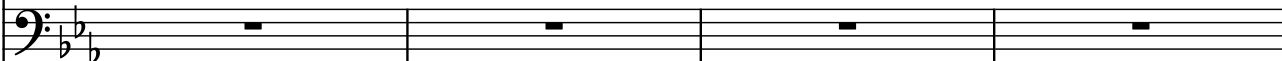
Vcs.

Violins (Vlns.) play sustained chords in the treble clef. Cellos (Cbs.) continue with a continuous eighth-note pattern in the bass clef. Double basses (Vcs.) play a sparse accompaniment in the bass clef.

72

Vlns. 

Cbs. 

Vcs. 

76

Vlns. 

Cbs. 

Vcs. 

80

Vlns. 

Cbs. 

Vcs. 