

Level 1 - Tail Cave (3)

Composer: Kazumi Totaka

Game: Legend of Zelda, The: Link's Awakening

pianogame.org

$\text{♩} = 90$

System 1 (measures 1-3) of a musical score in 4/4 time, key of D major (two sharps). The tempo is marked as quarter note = 90. The system consists of two staves: a treble staff and a bass staff. The treble staff contains a melody of eighth and quarter notes, while the bass staff provides a simple accompaniment of eighth and quarter notes.

4

System 2 (measures 4-6). The musical notation continues with the same melodic and harmonic patterns as the first system.

7

System 3 (measures 7-9). The melody in the treble staff shows some chromatic movement, including a sharp sign on the eighth measure.

10

System 4 (measures 10-12). The treble staff has a whole rest in the final measure of the system.

13

System 5 (measures 13-15). The musical notation continues with the same melodic and harmonic patterns.

16

System 6 (measures 16-18). The musical notation continues with the same melodic and harmonic patterns.

19

System 7 (measures 19-21). The musical notation continues with the same melodic and harmonic patterns.

Measures 22-24 of a musical score. The key signature is three sharps (F#, C#, G#). The time signature is 2/4. The score is written for piano with a grand staff (treble and bass clefs). Measure 22: Treble clef has a half note G#4, a quarter note A4, and a quarter note B4. Bass clef has a half note G#3, a quarter note A3, and a quarter note B3. Measure 23: Treble clef has a half note A4, a quarter note B4, and a quarter note C5. Bass clef has a half note A3, a quarter note B3, and a quarter note C4. Measure 24: Treble clef has a half note B4, a quarter note C5, and a quarter note D5. Bass clef has a half note B3, a quarter note C4, and a quarter note D4.

Measures 25-26 of a musical score. The key signature is three sharps (F#, C#, G#). The time signature is 2/4. The score is written for piano with a grand staff. Measure 25: Treble clef has a half note G#4, a quarter note A4, and a quarter note B4. Bass clef has a half note G#3, a quarter note A3, and a quarter note B3. Measure 26: Treble clef has a half note A4, a quarter note B4, and a quarter note C5. Bass clef has a half note A3, a quarter note B3, and a quarter note C4.

Measures 27-28 of a musical score. The key signature is three sharps (F#, C#, G#). The time signature is 2/4. The score is written for piano with a grand staff. Measure 27: Treble clef has a half note G#4, a quarter note A4, and a quarter note B4. Bass clef has a half note G#3, a quarter note A3, and a quarter note B3. Measure 28: Treble clef has a half note A4, a quarter note B4, and a quarter note C5. Bass clef has a half note A3, a quarter note B3, and a quarter note C4.

Measures 29-30 of a musical score. The key signature is three sharps (F#, C#, G#). The time signature is 2/4. The score is written for piano with a grand staff. Measure 29: Treble clef has a half note G#4, a quarter note A4, and a quarter note B4. Bass clef has a half note G#3, a quarter note A3, and a quarter note B3. Measure 30: Treble clef has a half note A4, a quarter note B4, and a quarter note C5. Bass clef has a half note A3, a quarter note B3, and a quarter note C4.

Measures 31-32 of a musical score. The key signature is three sharps (F#, C#, G#). The time signature is 2/4. The score is written for piano with a grand staff. Measure 31: Treble clef has a half note G#4, a quarter note A4, and a quarter note B4. Bass clef has a half note G#3, a quarter note A3, and a quarter note B3. Measure 32: Treble clef has a half note A4, a quarter note B4, and a quarter note C5. Bass clef has a half note A3, a quarter note B3, and a quarter note C4.

Measures 33-36 of a musical score. The key signature is three sharps (F#, C#, G#). The time signature is 2/4. The score is written for piano with a grand staff. Measure 33: Treble clef has a half note G#4, a quarter note A4, and a quarter note B4. Bass clef has a half note G#3, a quarter note A3, and a quarter note B3. Measure 34: Treble clef has a half note A4, a quarter note B4, and a quarter note C5. Bass clef has a half note A3, a quarter note B3, and a quarter note C4. Measure 35: Treble clef has a half note B4, a quarter note C5, and a quarter note D5. Bass clef has a half note B3, a quarter note C4, and a quarter note D4. Measure 36: Treble clef has a half note C5, a quarter note D5, and a quarter note E5. Bass clef has a half note C4, a quarter note D4, and a quarter note E4.

Measures 37-39 of a musical score. The key signature is three sharps (F#, C#, G#). The time signature is 2/4. The score is written for piano with a grand staff. Measure 37: Treble clef has a half note G#4, a quarter note A4, and a quarter note B4. Bass clef has a half note G#3, a quarter note A3, and a quarter note B3. Measure 38: Treble clef has a half note A4, a quarter note B4, and a quarter note C5. Bass clef has a half note A3, a quarter note B3, and a quarter note C4. Measure 39: Treble clef has a half note B4, a quarter note C5, and a quarter note D5. Bass clef has a half note B3, a quarter note C4, and a quarter note D4.

40



43



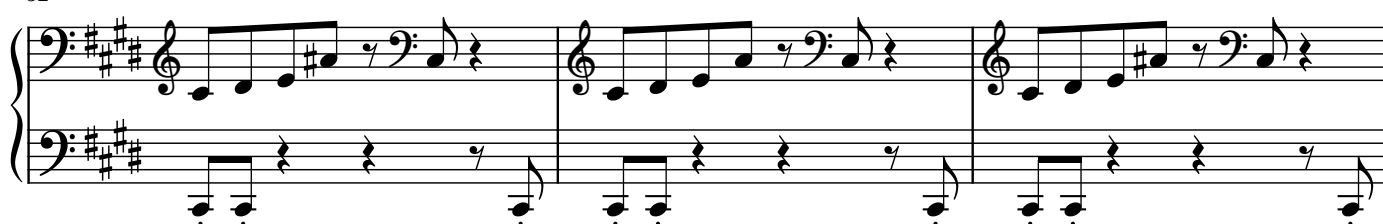
46



49



52



55



58



Measures 61 and 62 of a musical score. The key signature is three sharps (F#, C#, G#). The time signature is 2/4. The score is written for piano (p) and features a dense, rapid sixteenth-note chordal texture in the right hand, while the left hand plays a simple eighth-note bass line.

Measures 63 and 64 of a musical score. The key signature is three sharps (F#, C#, G#). The time signature is 2/4. The score is written for piano (p) and features a dense, rapid sixteenth-note chordal texture in the right hand, while the left hand plays a simple eighth-note bass line.

Measures 65 and 66 of a musical score. The key signature is three sharps (F#, C#, G#). The time signature is 2/4. The score is written for piano (p) and features a dense, rapid sixteenth-note chordal texture in the right hand, while the left hand plays a simple eighth-note bass line. The system concludes with a double bar line and a 2/4 time signature change.

Measures 67 and 68 of a musical score. The key signature is three sharps (F#, C#, G#). The time signature is 2/4. The score is written for piano (p) and features a dense, rapid sixteenth-note chordal texture in the right hand, while the left hand plays a simple eighth-note bass line. The system concludes with a double bar line and a 4/4 time signature change.