

# **CD Version - Deserto "SECRET"**

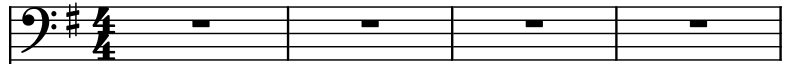
Composer: Alexander Brandon

Game: Jazz Jackrabbit

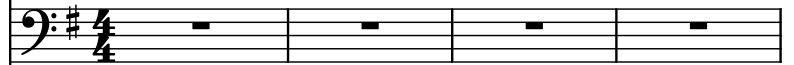
[pianogame.org](http://pianogame.org)

♩ = 132

Bass Synthesizer, Sequenced by MaliceX



Effect Synthesizer, (C) 2004 TCMiDiS/MaliceX



Brass Synthesizer, Sampler

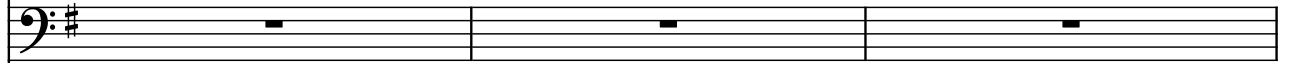


5

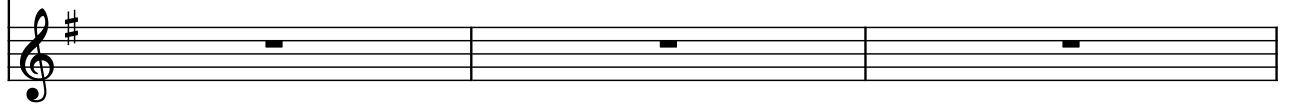
Synth.



Synth.

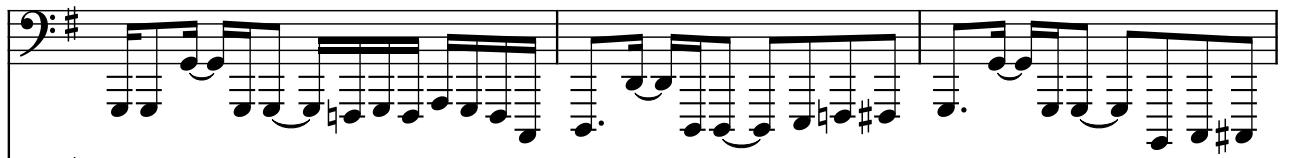


Synth.

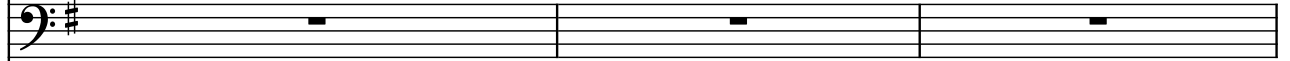


8

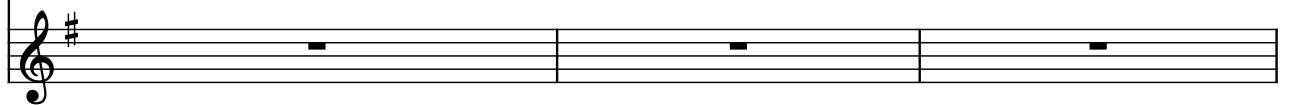
Synth.



Synth.

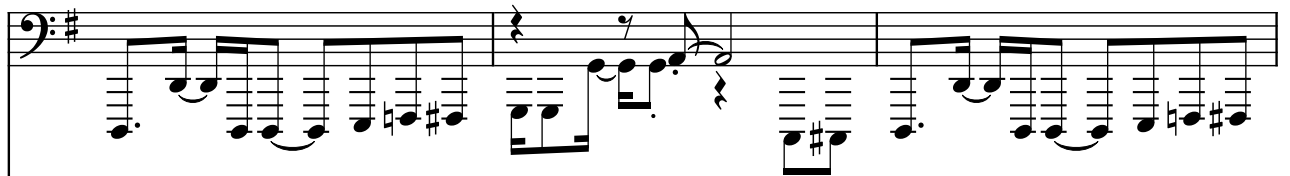


Synth.

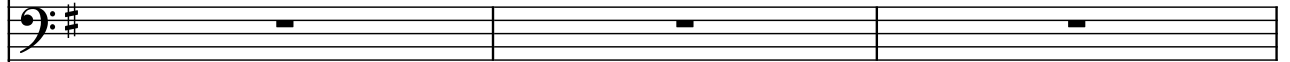


11

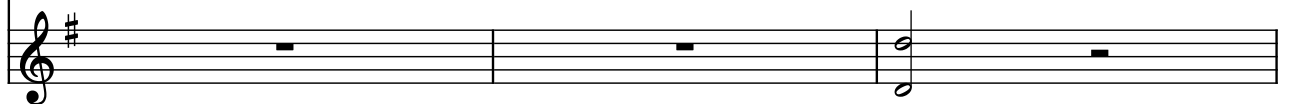
Synth.




Synth.



Synth.



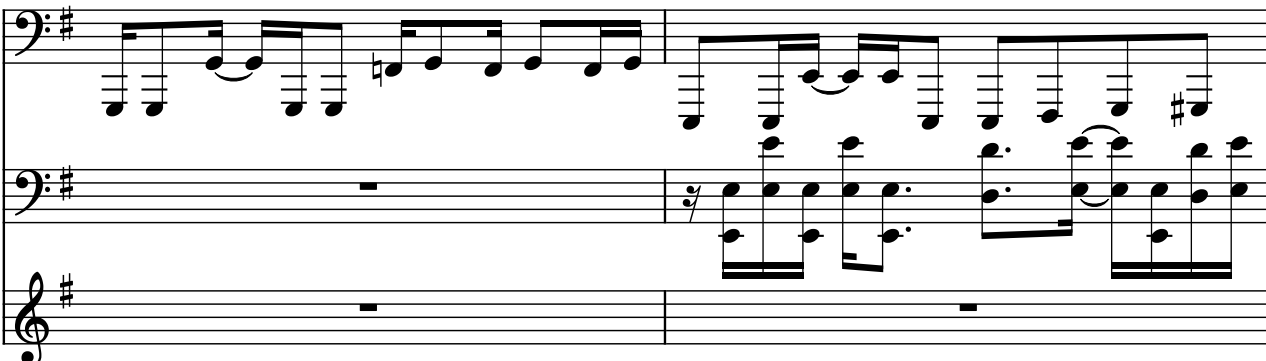
14

Synth. 

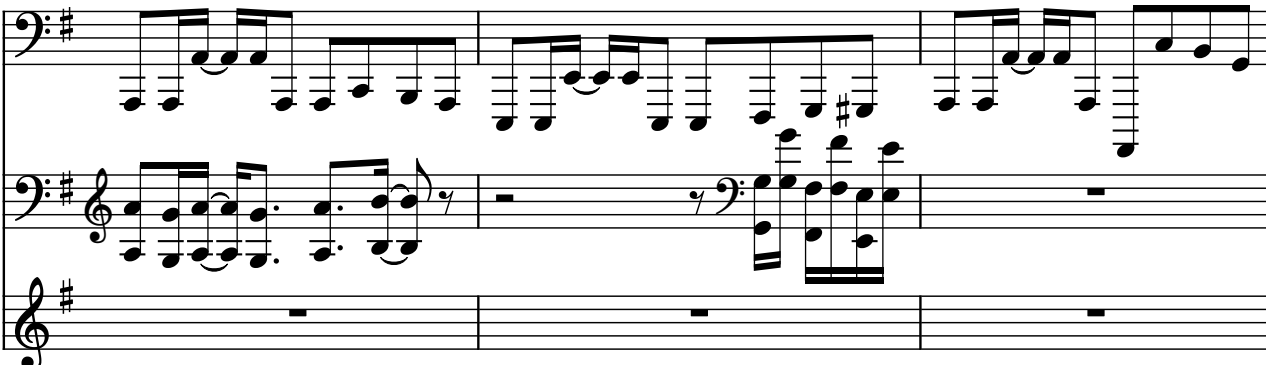
17

Synth. 

20

Synth. 

22

Synth. 

25


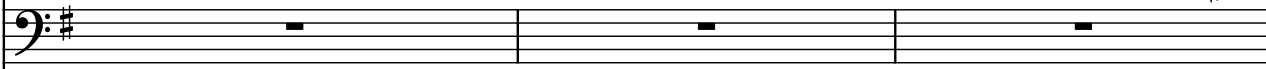
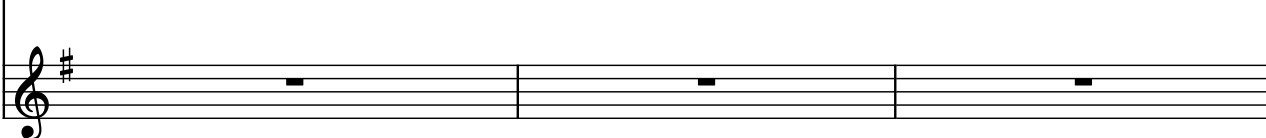
27

31


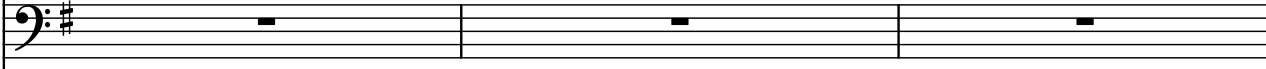
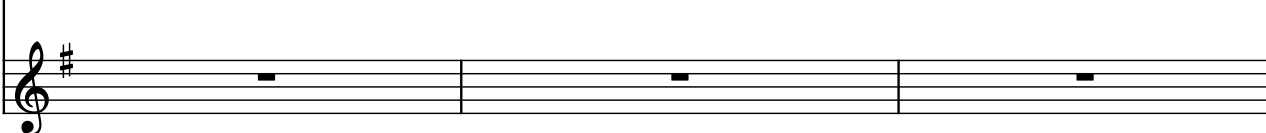
37

Synth.  
 Synth.  
 Synth.

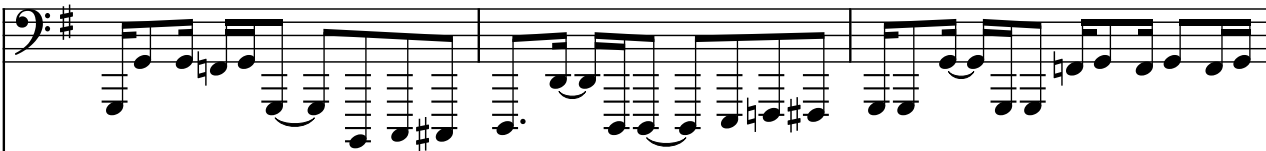
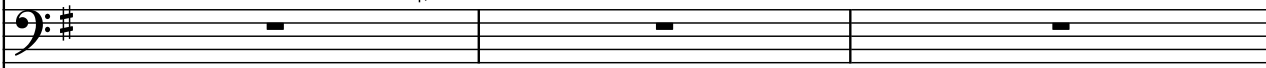
40

Synth.   
Synth.   
Synth. 

43

Synth.   
Synth.   
Synth. 


46

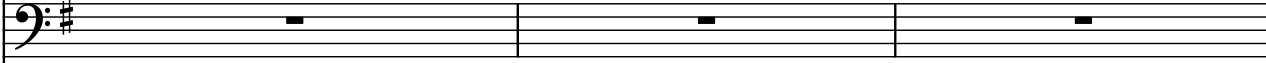
Synth.   
Synth.   
Synth. 

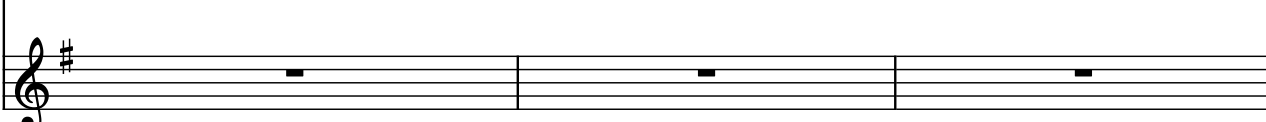
49

Synth.   
Synth.   
Synth. 

52

Synth. 

Synth. 

Synth. 

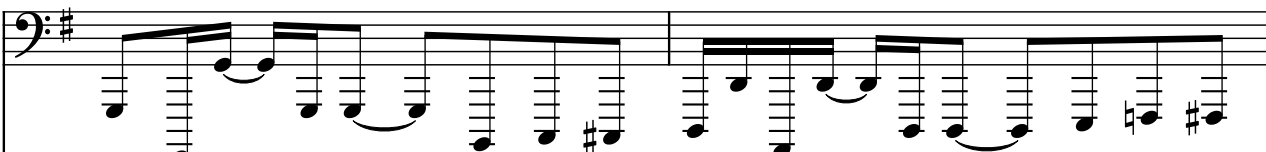
55

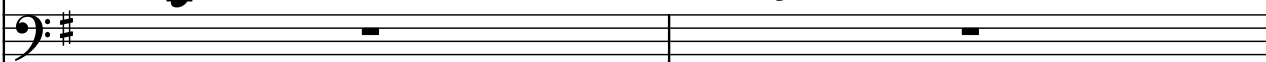
Synth. 

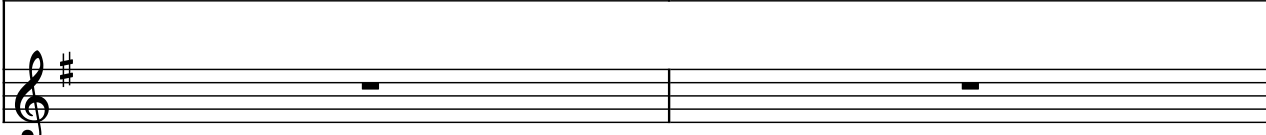
Synth. 

Synth. 

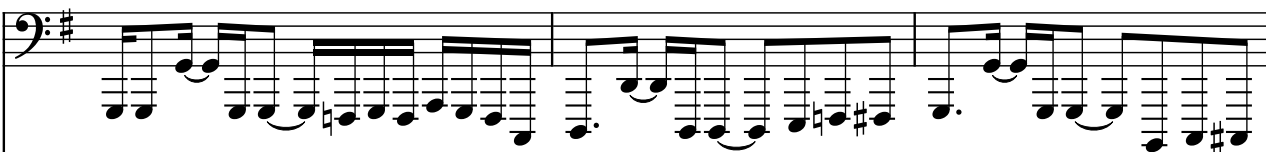
58

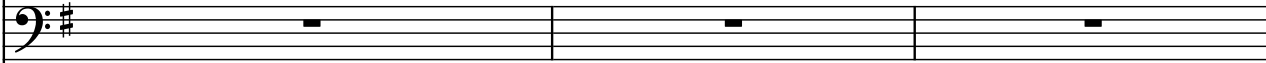
Synth. 

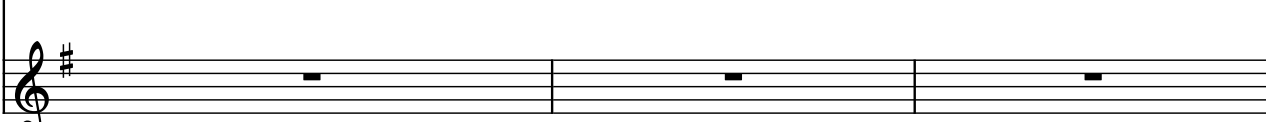
Synth. 

Synth. 

60

Synth. 

Synth. 

Synth. 

63

Synth. 

Synth. 

Synth. 

66

Synth. 

Synth. 

Synth. 


69


Synth. 

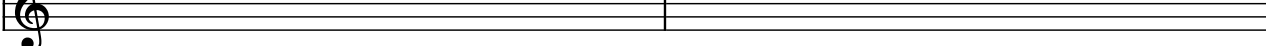
Synth. 

Synth. 

72

Synth. 

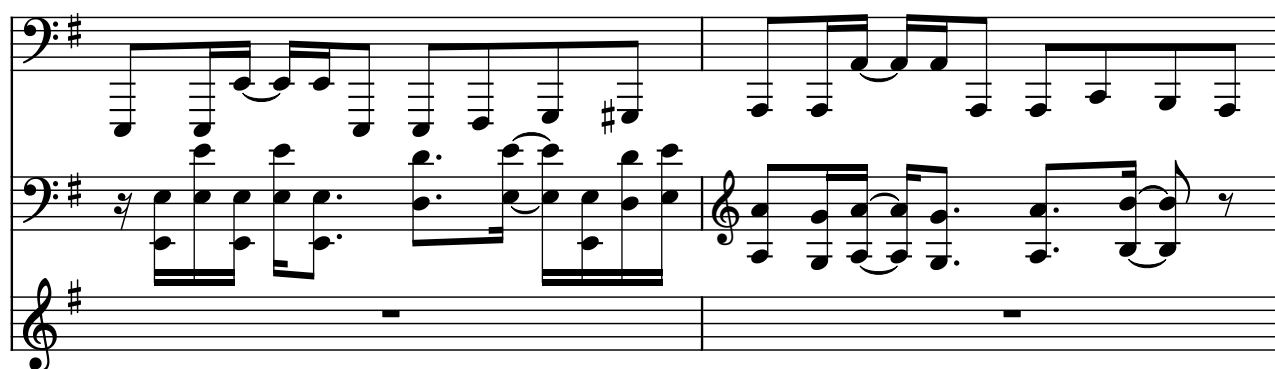
Synth. 

Synth. 

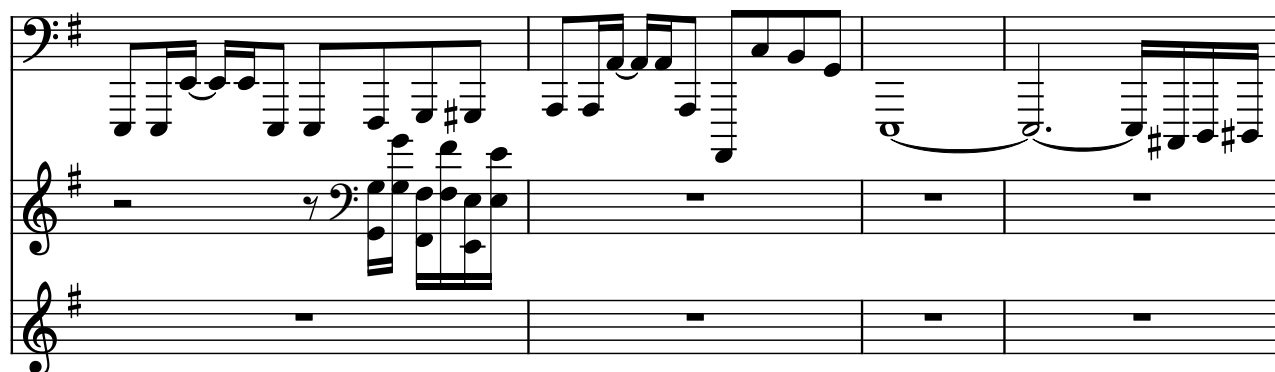
74

Synth. 

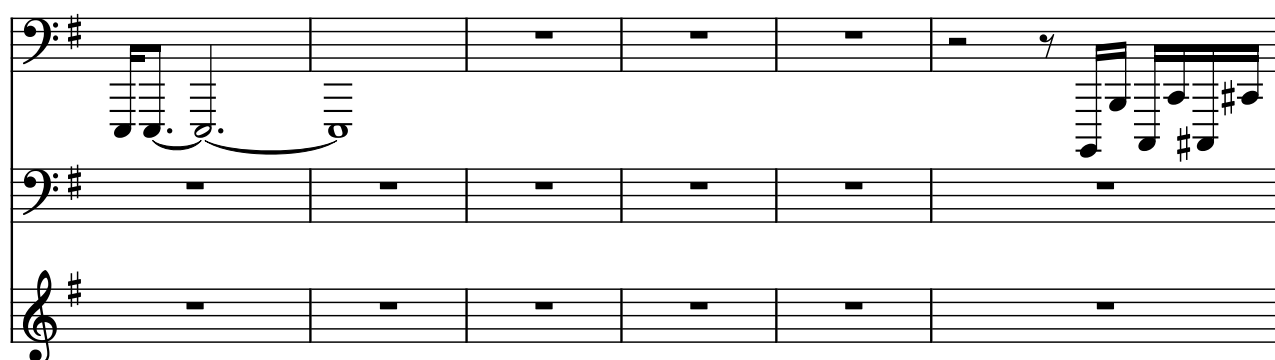
77

Synth. 

79

Synth. 

83

Synth. 



89

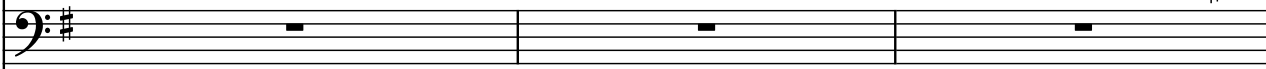
Synth. 

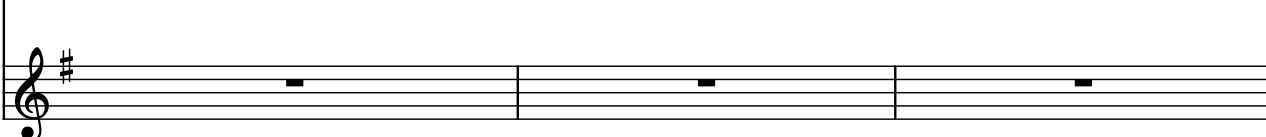
Synth. 

Synth. 


92

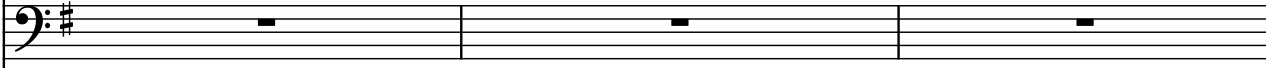
Synth. 

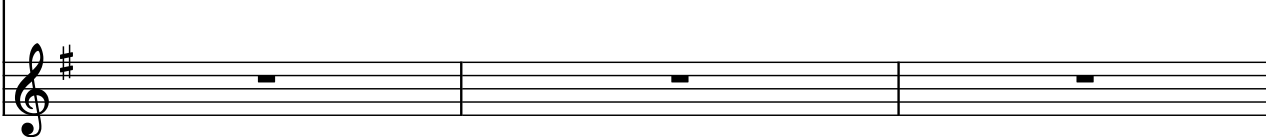
Synth. 

Synth. 

95

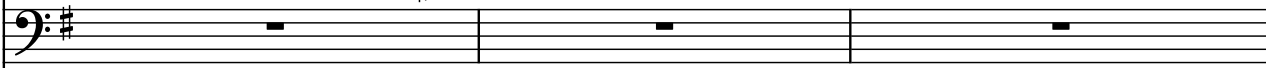
Synth. 

Synth. 

Synth. 

98

Synth. 

Synth. 

Synth. 

101

Synth.

Synth.

Synth.

104

Synth.

Synth.

Synth.

107

Synth.

Synth.

Synth.

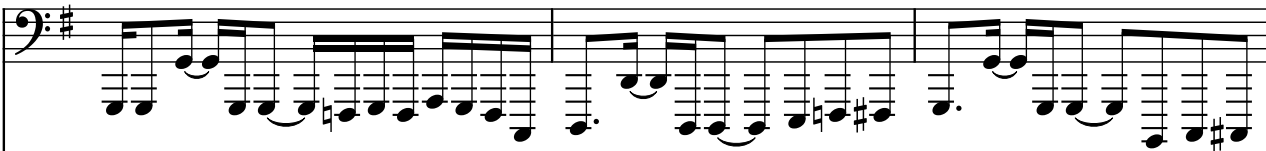
110

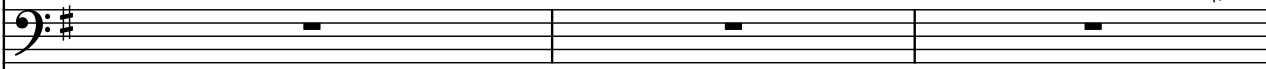
Synth.

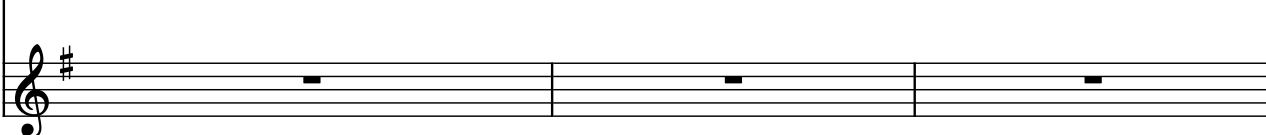
Synth.

Synth.

112

Synth. 

Synth. 

Synth. 

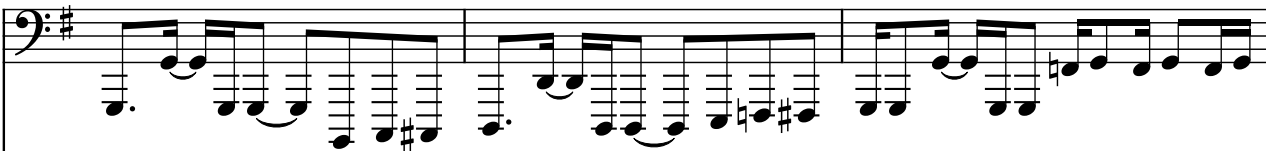
115


Synth. 

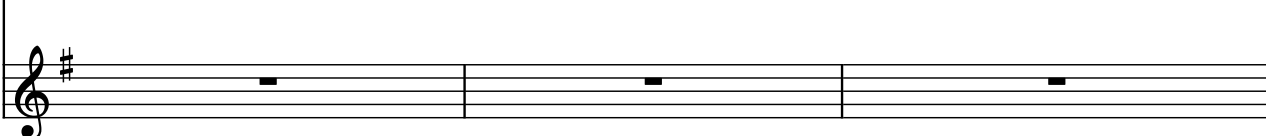
Synth. 

Synth. 


118

Synth. 

Synth. 

Synth. 

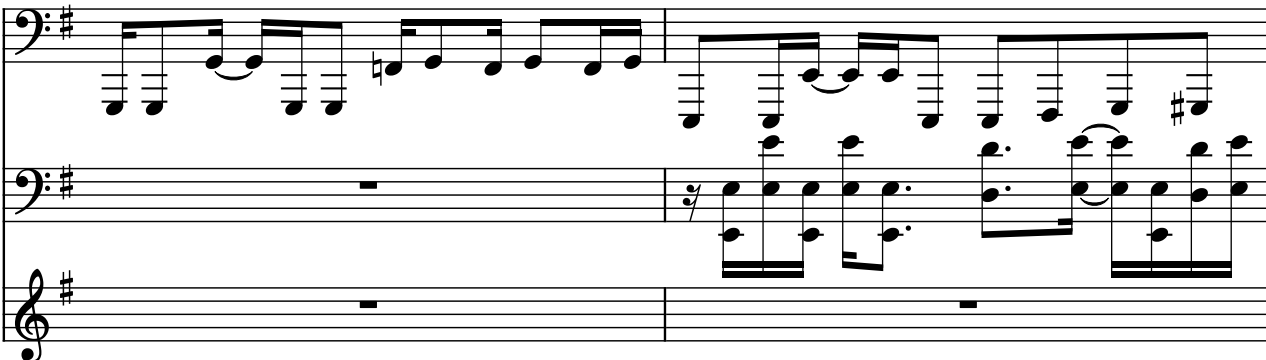
121

Synth. 

Synth. 

Synth. 

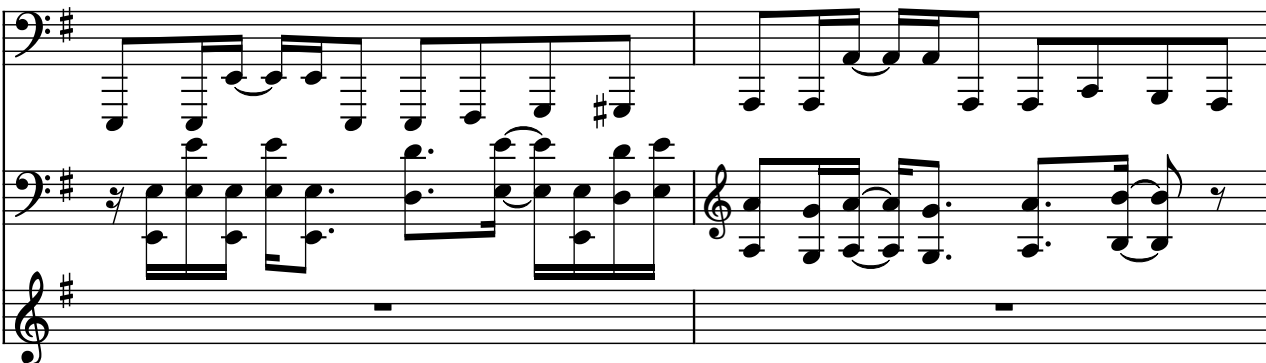
124

Synth. 


126

Synth. 


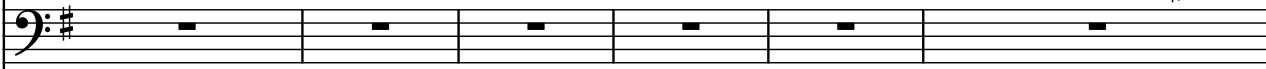
129

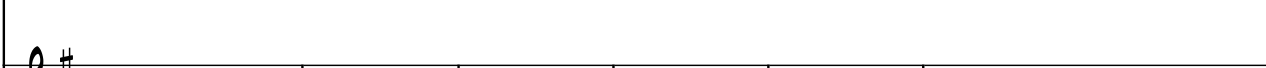
Synth. 

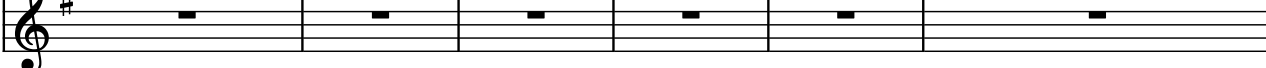
131

Synth. 

135


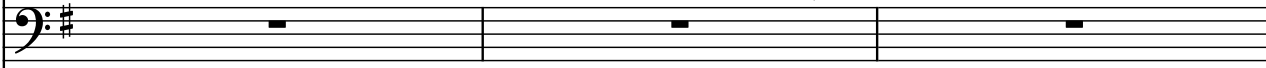
Synth.  

Synth. 

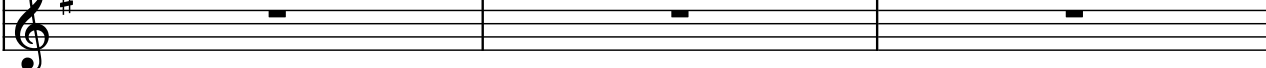
Synth. 

Detailed description: This system contains three staves. The top staff, labeled 'Synth.', is in bass clef with a key signature of one sharp (F#). It begins with a melodic phrase in the first measure, followed by five measures of whole rests, and then a final melodic phrase in the sixth measure. The middle staff, also labeled 'Synth.', is in bass clef with a key signature of one sharp and contains six measures of whole rests. The bottom staff, labeled 'Synth.', is in treble clef with a key signature of one sharp and contains six measures of whole rests.

141


Synth.  

Synth. 

Synth. 

Detailed description: This system contains three staves. The top staff, labeled 'Synth.', is in bass clef with a key signature of one sharp. It features a continuous eighth-note melody across six measures. The middle staff, labeled 'Synth.', is in bass clef with a key signature of one sharp and contains six measures of whole rests. The bottom staff, labeled 'Synth.', is in treble clef with a key signature of one sharp and contains six measures of whole rests.

144

Synth.  


Synth. 

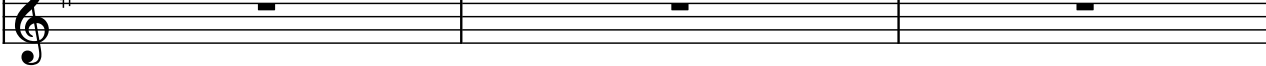
Synth. 

Detailed description: This system contains three staves. The top staff, labeled 'Synth.', is in bass clef with a key signature of one sharp. It features a continuous eighth-note melody across six measures. The middle staff, labeled 'Synth.', is in bass clef with a key signature of one sharp and contains six measures of whole rests. The bottom staff, labeled 'Synth.', is in treble clef with a key signature of one sharp and contains six measures of whole rests.

147

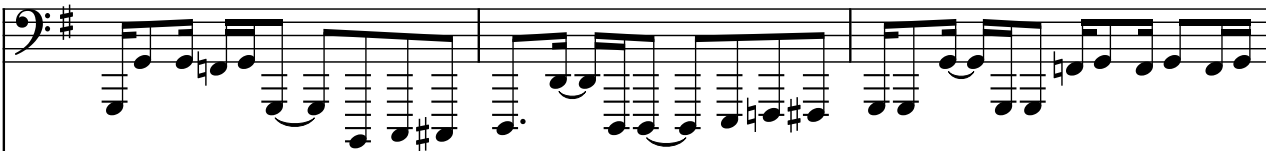
Synth.  

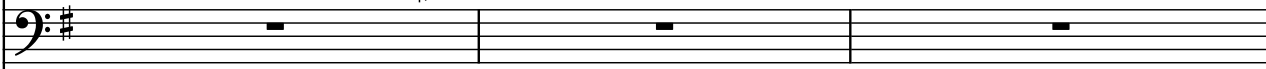
Synth. 

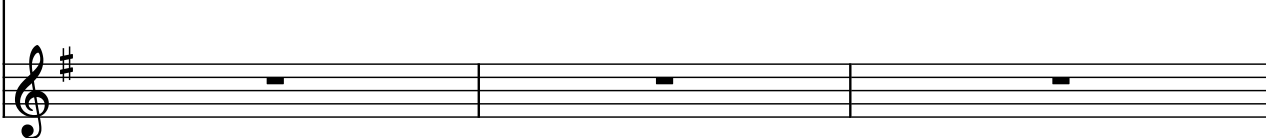
Synth. 

Detailed description: This system contains three staves. The top staff, labeled 'Synth.', is in bass clef with a key signature of one sharp. It features a continuous eighth-note melody across six measures. The middle staff, labeled 'Synth.', is in bass clef with a key signature of one sharp and contains six measures of whole rests. The bottom staff, labeled 'Synth.', is in treble clef with a key signature of one sharp and contains six measures of whole rests.


150

Synth. 

Synth. 

Synth. 


153

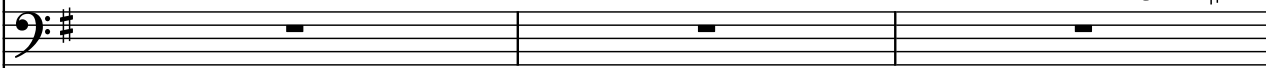
Synth. 

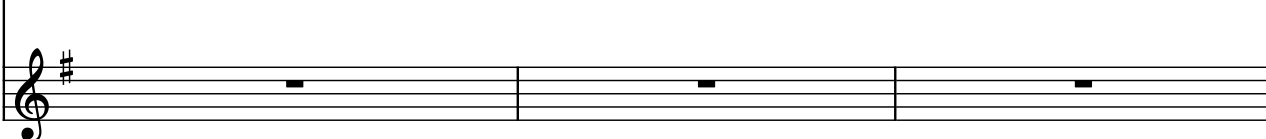
Synth. 

Synth. 

156

Synth. 

Synth. 

Synth. 

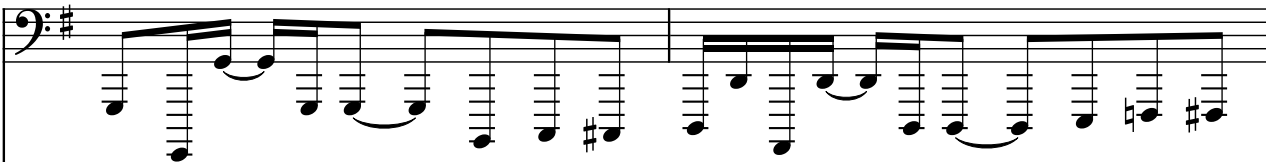
159

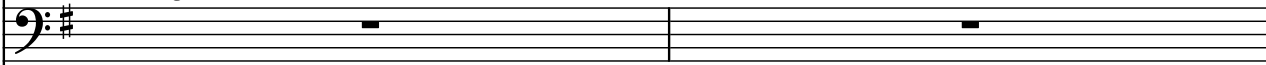
Synth. 


Synth. 

Synth. 

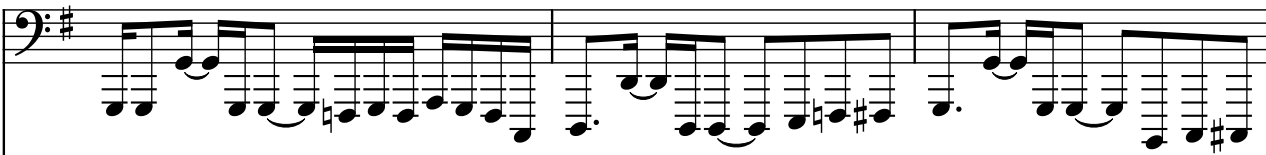
162

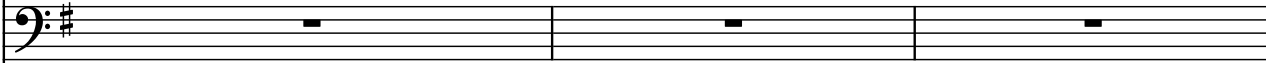
Synth. 

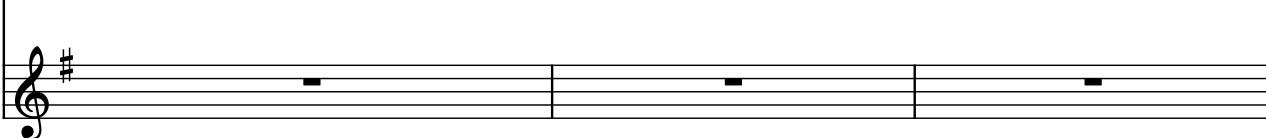
Synth. 

Synth. 

164

Synth. 

Synth. 

Synth. 

167

Synth. 

Synth. 

Synth. 


170

Synth. 

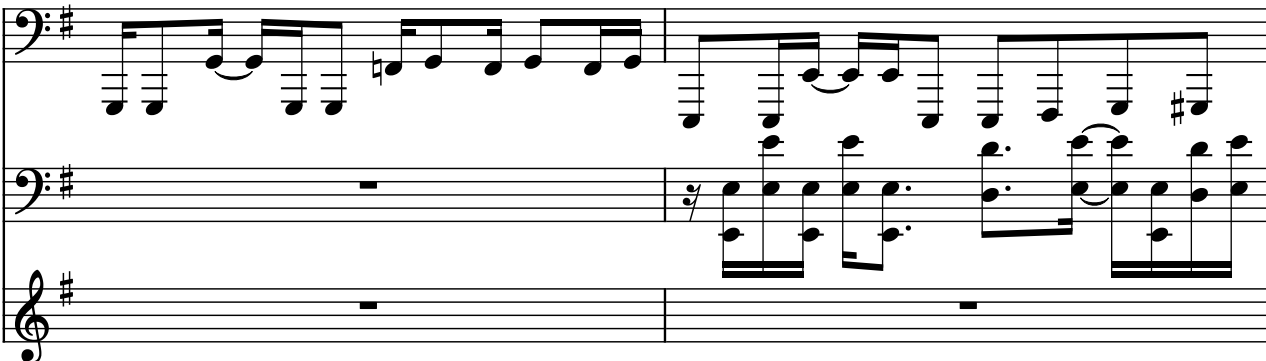
Synth. 

Synth. 

173

Synth. 

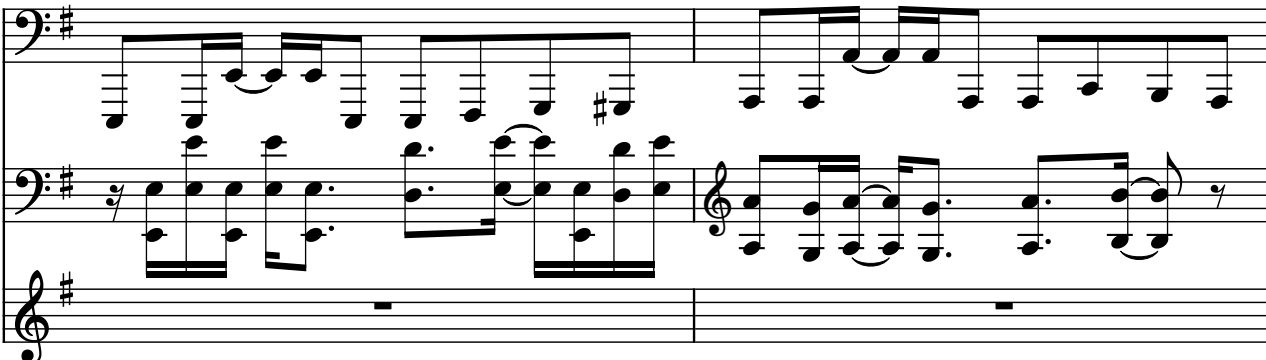
176

Synth. 

178


Synth. 

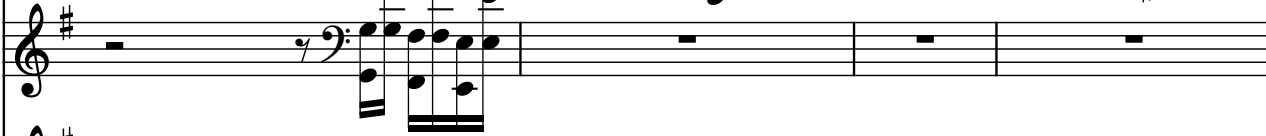
181

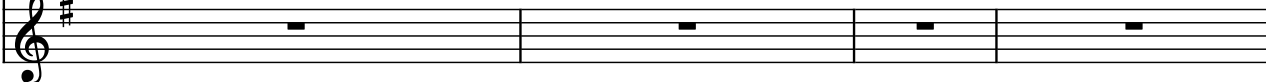
Synth. 



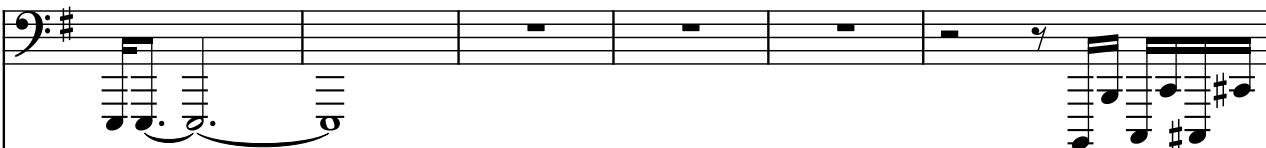
183

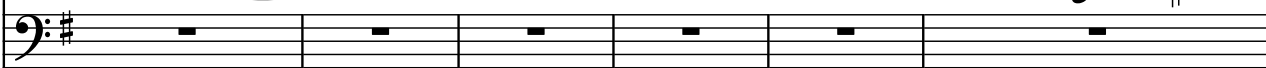
Synth. 

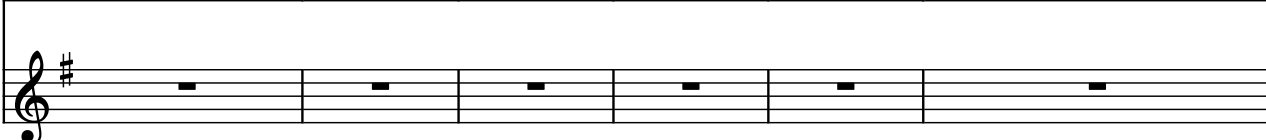
Synth. 

Synth. 

187

Synth. 


Synth. 

Synth. 

193

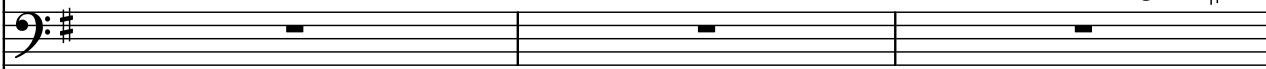
Synth. 

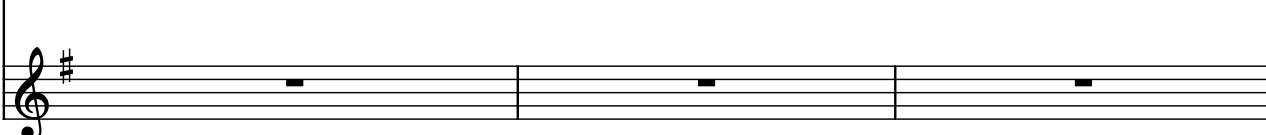
Synth. 

Synth. 

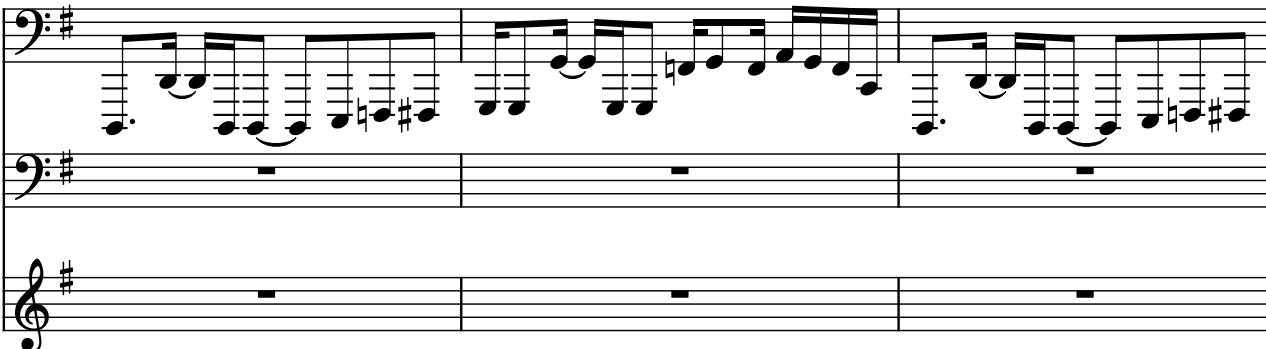
196

Synth. 

Synth. 

Synth. 

199

Synth. 


202

Synth. 

205

Synth. 

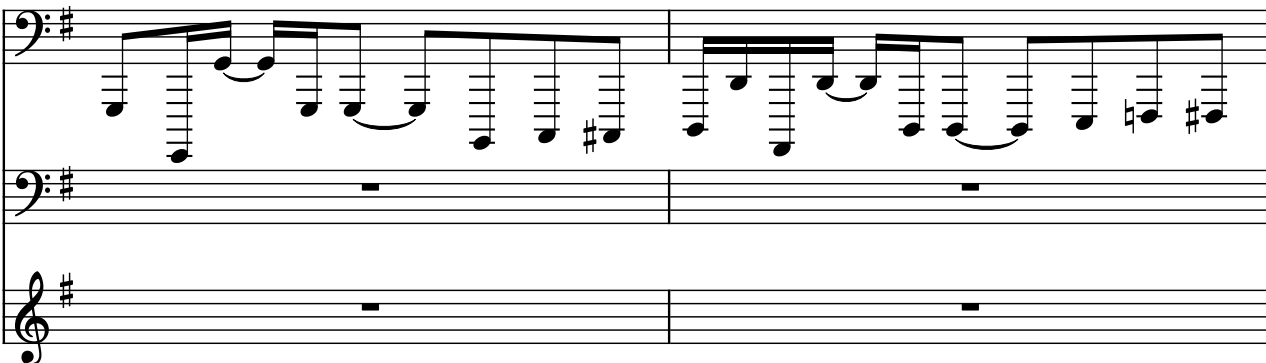
208

Synth. 


211

Synth. 

214

Synth. 


216

Synth. 

219

Synth. 

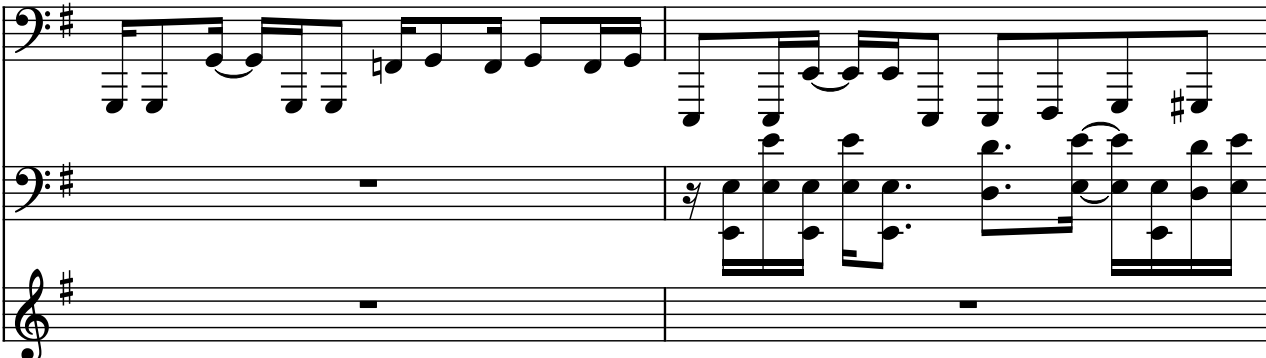
222

Synth. 


225

Synth. 


228

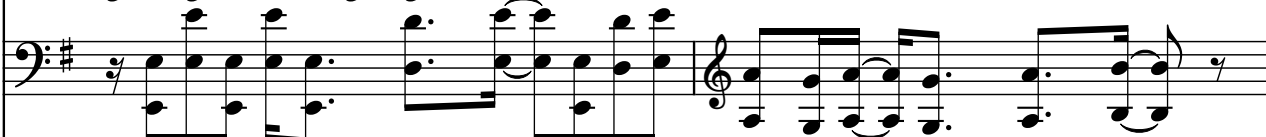
Synth. 

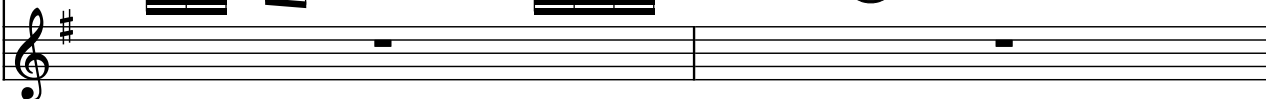
230

Synth. 


233

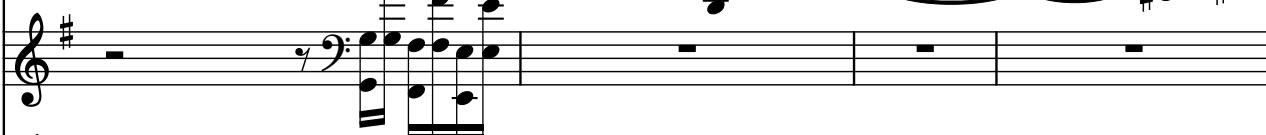
Synth. 

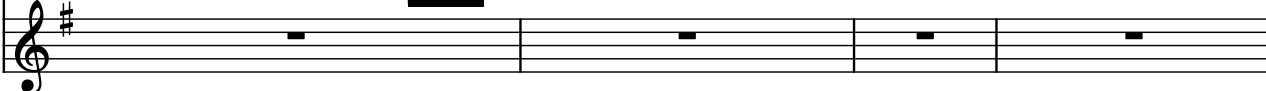
Synth. 

Synth. 


235


Synth. 

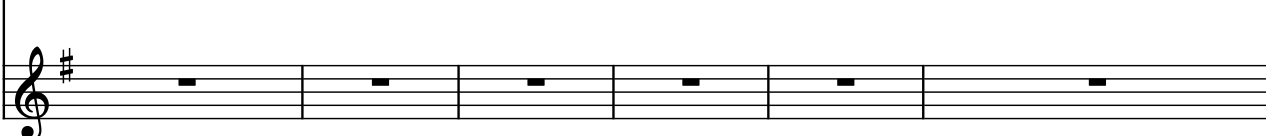
Synth. 

Synth. 

239

Synth. 

Synth. 

Synth. 

245

Synth. 

Synth. 

Synth. 

248

Synth.

Synth.

Synth.

251

Synth.

Synth.

Synth.

254

Synth.

Synth.

Synth.

257

Synth.

Synth.

Synth.

260

Synth.

Synth.

Synth.

263

266

268

Synth.  
 Synth.  
 Synth.

271

Synth. 

Synth. 

Synth. 

274

Synth. 

Synth. 

Synth. 


277


Synth. 

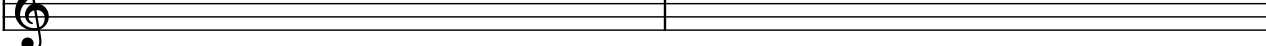
Synth. 

Synth. 

280

Synth. 

Synth. 

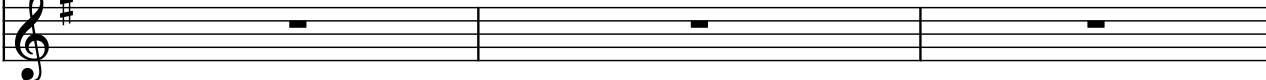
Synth. 




282


Synth. 

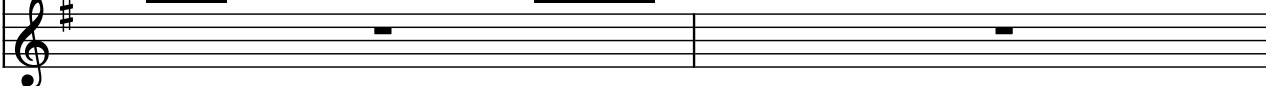
Synth. 

Synth. 

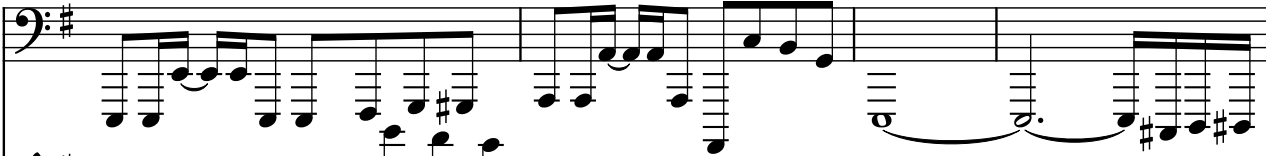
285

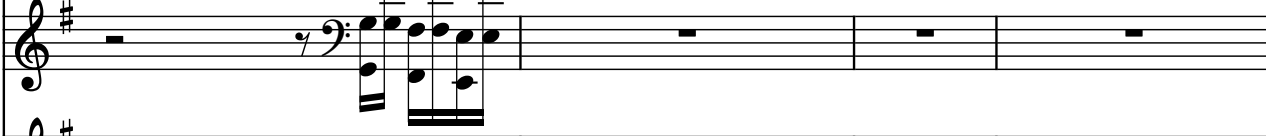
Synth. 

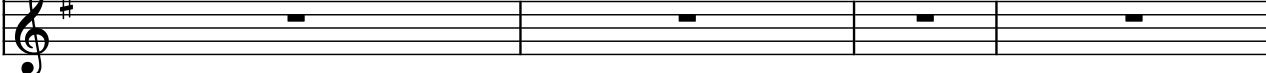
Synth. 

Synth. 


287

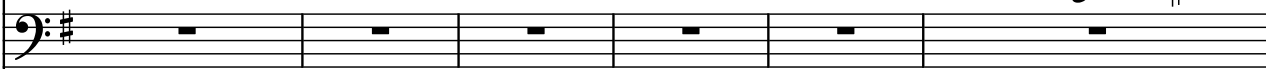
Synth. 

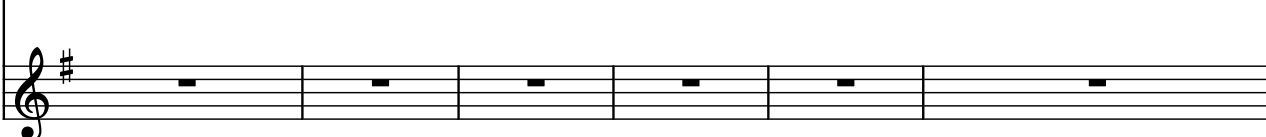
Synth. 

Synth. 

291

Synth. 

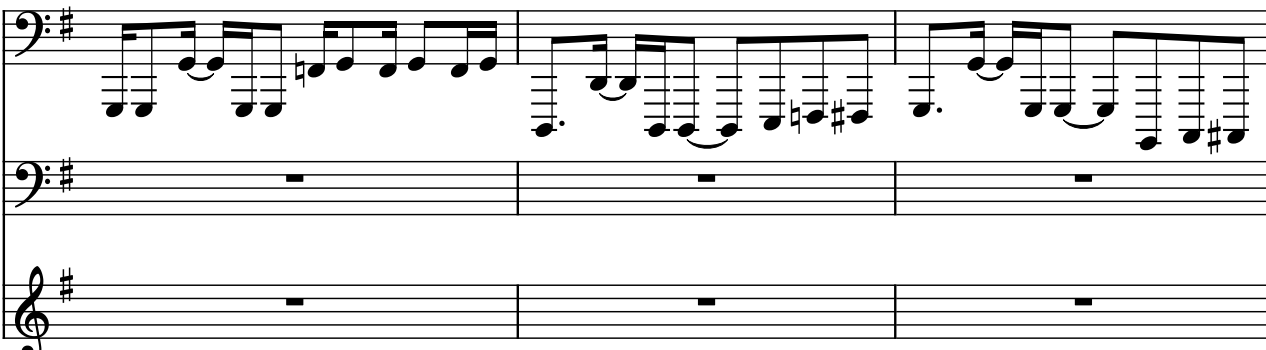
Synth. 

Synth. 


297

Synth. 

300

Synth. 

303

Synth. 

306

Synth. 

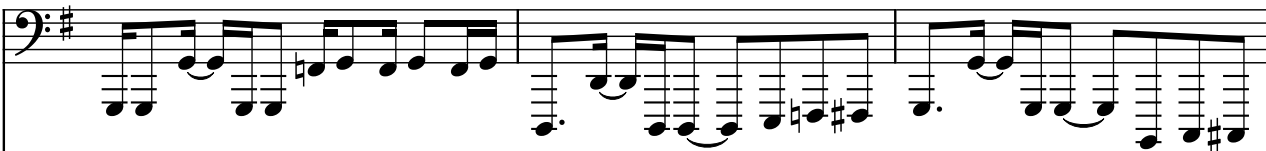
309

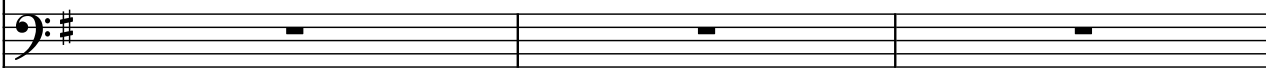
Synth. 

Synth. 

Synth. 

312

Synth. 

Synth. 

Synth. 

315

Synth. 

Synth. 

Synth. 