

# Charge Man's Stage (7)

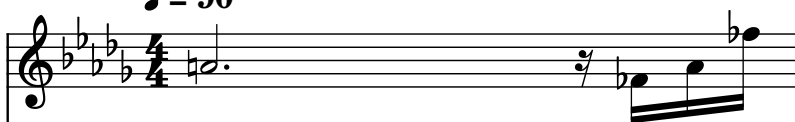
Composer: Mari Yamaguchi

Game: Mega Man V

[pianogame.org](http://pianogame.org)

♩ = 90

Alto Saxophone, Melody (Alto Sax)



Alto Saxophone, Melody 1/16 Echo (Alto Sax)



Alto Saxophone, Melody 1/8 Echo (Alto Sax)



2

A. Sax.

Musical staff for Alto Saxophone, Melody 1/16 Echo (Alto Sax). The staff is in treble clef, key of B-flat major, and 4/4 time. It contains a single measure with a half note G4 and a quarter rest.

A. Sax.

Musical staff for Alto Saxophone, Melody 1/8 Echo (Alto Sax). The staff is in treble clef, key of B-flat major, and 4/4 time. It contains a single measure with a half note G4 and a quarter rest.

A. Sax.

Musical staff for Alto Saxophone, Melody (Alto Sax). The staff is in treble clef, key of B-flat major, and 4/4 time. It contains a single measure with a half note G4 and a quarter rest.

4

A. Sax.

Musical staff for Alto Saxophone, Melody 1/16 Echo (Alto Sax). The staff is in treble clef, key of B-flat major, and 4/4 time. It contains a single measure with a half note G4 and a quarter rest.

A. Sax.

Musical staff for Alto Saxophone, Melody 1/8 Echo (Alto Sax). The staff is in treble clef, key of B-flat major, and 4/4 time. It contains a single measure with a half note G4 and a quarter rest.

A. Sax.

Musical staff for Alto Saxophone, Melody (Alto Sax). The staff is in treble clef, key of B-flat major, and 4/4 time. It contains a single measure with a half note G4 and a quarter rest.

6

A. Sax.

Musical staff for Alto Saxophone, Melody 1/16 Echo (Alto Sax). The staff is in treble clef, key of B-flat major, and 4/4 time. It contains a single measure with a half note G4 and a quarter rest.

A. Sax.

Musical staff for Alto Saxophone, Melody 1/8 Echo (Alto Sax). The staff is in treble clef, key of B-flat major, and 4/4 time. It contains a single measure with a half note G4 and a quarter rest.

A. Sax.

Musical staff for Alto Saxophone, Melody (Alto Sax). The staff is in treble clef, key of B-flat major, and 4/4 time. It contains a single measure with a half note G4 and a quarter rest.

8

A. Sax.

A. Sax.

A. Sax.

3

9

A. Sax.

A. Sax.

A. Sax.

9

A. Sax.

A. Sax.

A. Sax.

11

A. Sax.

A. Sax.

A. Sax.

The image shows a musical score for three Alto Saxophones (A. Sax.) in B-flat major, measures 11-13. The score is written on three staves. Measure 11 starts with a treble clef and a key signature of two flats (B-flat major). The first staff has a whole rest, followed by a quarter note B-flat, a quarter note A-flat, and a quarter note G-flat. The second staff has a quarter note B-flat, a quarter note A-flat, and a quarter note G-flat. The third staff has a quarter note B-flat, a quarter note A-flat, and a quarter note G-flat. Measure 12 starts with a treble clef and a key signature of two flats. The first staff has a quarter note B-flat, a quarter note A-flat, and a quarter note G-flat. The second staff has a quarter note B-flat, a quarter note A-flat, and a quarter note G-flat. The third staff has a quarter note B-flat, a quarter note A-flat, and a quarter note G-flat. Measure 13 starts with a treble clef and a key signature of two flats. The first staff has a quarter note B-flat, a quarter note A-flat, and a quarter note G-flat. The second staff has a quarter note B-flat, a quarter note A-flat, and a quarter note G-flat. The third staff has a quarter note B-flat, a quarter note A-flat, and a quarter note G-flat.

[illegible]

15

A. Sax.

A. Sax.

A. Sax.

A. Sax.

17

A. Sax.

Musical score for three Alto Saxophones (A. Sax.) in measures 17 and 18. The key signature has four flats (Bb, Eb, Ab, Db). Measure 17 features a complex rhythmic pattern with eighth and sixteenth notes, including a triplet of eighth notes. Measure 18 continues the pattern with a mix of eighth and quarter notes.

19

A. Sax.

Musical score for three Alto Saxophones (A. Sax.) in measures 19 and 20. Measure 19 shows a continuation of the melodic lines with some rests. Measure 20 features a half note chord in the first staff and a half note in the third staff, with a whole note in the second staff.

21

A. Sax.

Musical score for three Alto Saxophones (A. Sax.) in measures 21 and 22. Measure 21 contains a series of eighth and sixteenth notes across all staves. Measure 22 continues the melodic development with various note values and rests.

23

A. Sax.

Musical score for three Alto Saxophones (A. Sax.) in measures 23 and 24. Measure 23 is similar to measure 21, with active eighth and sixteenth note patterns. Measure 24 concludes the section with a final melodic phrase and rests.

25

A. Sax.

A. Sax.

A. Sax.

27

A. Sax.

A. Sax.

A. Sax.

29

A. Sax.

A. Sax.

A. Sax.

31

A. Sax.

A. Sax.

A. Sax.

32

A. Sax.

A. Sax.

A. Sax.



34

A. Sax.

A. Sax.

A. Sax.

36

A. Sax.

A. Sax.

A. Sax.

38

A. Sax.

A. Sax.

A. Sax.

— 3 —

40

A. Sax.

A. Sax.

A. Sax.

42

A. Sax.

Three staves of music for Alto Saxophones. The key signature has four flats (Bb, Eb, Ab, Db). The first staff (top) starts with a measure rest, followed by eighth and sixteenth notes, ending with a whole note Bb. The second staff (middle) has a continuous line of eighth and sixteenth notes with various accidentals. The third staff (bottom) also has a continuous line of eighth and sixteenth notes, mirroring the second staff's complexity.

44

A. Sax.

Two staves of music for Alto Saxophones. The key signature remains four flats. The first staff (top) continues the melodic line with eighth and sixteenth notes. The second staff (middle) features a more complex rhythmic pattern with many beamed sixteenth notes and various accidentals.

46

A. Sax.

Two staves of music for Alto Saxophones. The key signature remains four flats. The first staff (top) continues the melodic line. The second staff (middle) features a more complex rhythmic pattern with many beamed sixteenth notes and various accidentals.

48

A. Sax.

Two staves of music for Alto Saxophones. The key signature remains four flats. The first staff (top) continues the melodic line. The second staff (middle) features a more complex rhythmic pattern with many beamed sixteenth notes and various accidentals.

50

A. Sax.

A. Sax.

A. Sax.