

# **Between Two Worlds, Night**

Composer: Ryuji Sasai

Game: Rudora No Hihou (Japan)

[pianogame.org](http://pianogame.org)



12

Fl.

Bar. Sax.

Synth.

Measure 12: Bar. Sax. plays a melodic line starting on G4, moving up stepwise to D5. Fl. and Synth. are silent.

Measure 13: Bar. Sax. continues the melodic line. Fl. has a key signature change to B-flat major and remains silent. Synth. is silent.

14

Fl.

Bar. Sax.

Synth.

Measure 14: Bar. Sax. continues the melodic line. Fl. and Synth. are silent.

Measure 15: Bar. Sax. continues the melodic line. Fl. has a key signature change to B-flat major and remains silent. Synth. is silent.

16

Fl.

Bar. Sax.

Synth.

Measure 16: Bar. Sax. continues the melodic line. Fl. and Synth. are silent.

Measure 17: Bar. Sax. continues the melodic line. Fl. has a key signature change to B-flat major and remains silent. Synth. is silent.

18

Fl.

Bar. Sax.

Synth.

Measure 18: Fl. plays a melodic line starting on B-flat4, moving up stepwise to G5. Bar. Sax. is silent. Synth. plays a harmonic accompaniment starting on B-flat4.

Measure 19: Fl. continues the melodic line. Bar. Sax. is silent. Synth. continues the harmonic accompaniment.

Measure 20: Fl. continues the melodic line. Bar. Sax. is silent. Synth. continues the harmonic accompaniment.

21

Fl.

Bar. Sax.

Synth.

Measure 21: Fl. continues the melodic line. Bar. Sax. is silent. Synth. continues the harmonic accompaniment.

Measure 22: Fl. continues the melodic line. Bar. Sax. is silent. Synth. continues the harmonic accompaniment.

Measure 23: Fl. continues the melodic line. Bar. Sax. is silent. Synth. continues the harmonic accompaniment.

24

Fl.

Bar. Sax.

Synth.

27

Fl.

Bar. Sax.

Synth.

30

Fl.

Bar. Sax.

Synth.

32

Fl.

Bar. Sax.

Synth.

34

Fl.

Bar. Sax.

Synth.

36

Fl.

Bar. Sax.

Synth.

Fl.

Bar. Sax.

Synth.

38

Fl.

Bar. Sax.

Synth.

Fl.

Bar. Sax.

Synth.

40

Fl.

Bar. Sax.

Synth.

Fl.

Bar. Sax.

Synth.

42

Fl.

Bar. Sax.

Synth.

Fl.

Bar. Sax.

Synth.

45

Fl.

Bar. Sax.

Synth.

Fl.

Bar. Sax.

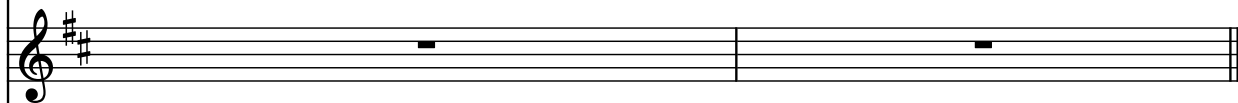
Synth.

48

Fl.



Bar. Sax.



Synth.

