

Castle (Remix) (2)

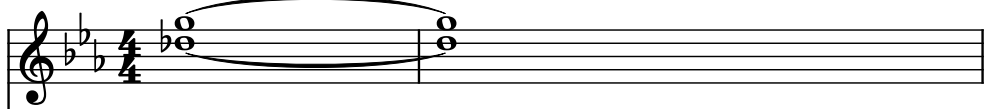
Composer: Koji Kondo

Game: Super Mario World

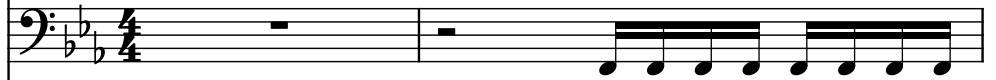
pianogame.org

♩ = 100

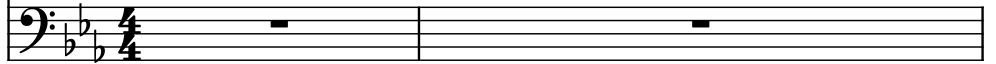
Violins (section), Staff



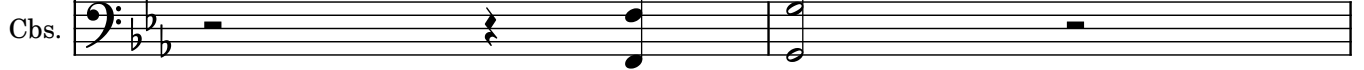
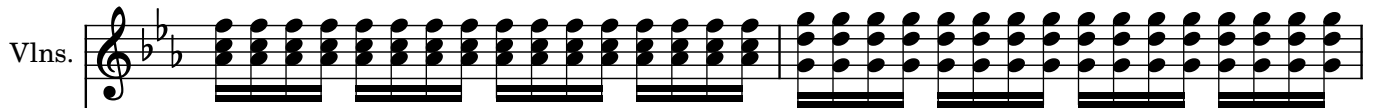
Timpani, Staff-1



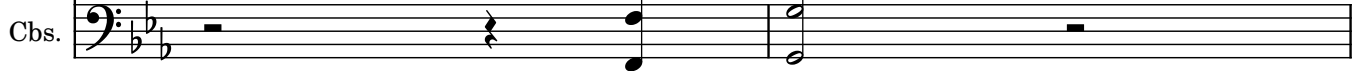
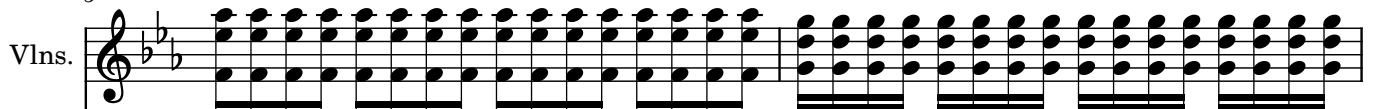
Contrabasses (section), Staff-2



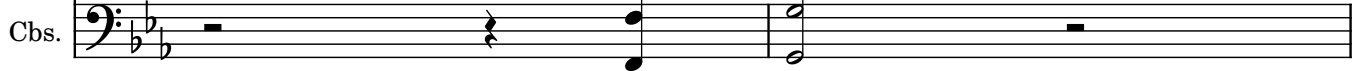
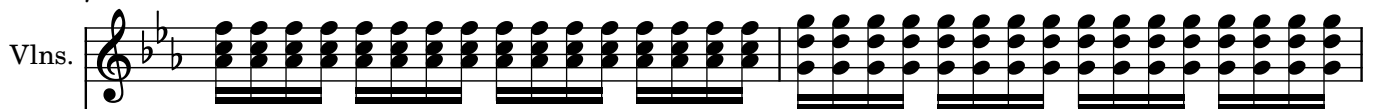
3



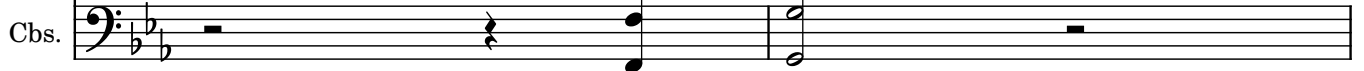
5



7



9



11

Vlms.

Timp.

Cbs.

13

Vlms.

Timp.

Cbs.

15

Vlms.

Timp.

Cbs.

17

Vlms.

Timp.

Cbs.

19

Vlms.

Timp.

Cbs.

21

Vlns.

Timp.

Cbs.

Measures 21-22. Violins play a continuous sixteenth-note pattern. Timpani and Cello/Double Bass play a rhythmic pattern of quarter and eighth notes with slurs.

23

Vlns.

Timp.

Cbs.

Measures 23-24. Violins play a continuous sixteenth-note pattern. Timpani and Cello/Double Bass play a rhythmic pattern of quarter and eighth notes with slurs.

25

Vlns.

Timp.

Cbs.

Measures 25-26. Violins play a continuous sixteenth-note pattern. Timpani and Cello/Double Bass play a rhythmic pattern of quarter and eighth notes with slurs.

27

Vlns.

Timp.

Cbs.

Measures 27-28. Violins play a continuous sixteenth-note pattern. Timpani and Cello/Double Bass play a rhythmic pattern of quarter and eighth notes with slurs.

29

Vlns.

Timp.

Cbs.

Measures 29-30. Violins play a continuous sixteenth-note pattern. Timpani and Cello/Double Bass play a rhythmic pattern of quarter and eighth notes with slurs.

31

Vlns.

Timp.

Cbs.

Measures 31-32: Violins play a continuous sixteenth-note chordal pattern. Timpani plays a rhythmic pattern of eighth and sixteenth notes. Cello plays a simple eighth-note accompaniment.

33

Vlns.

Timp.

Cbs.

Measures 33-35: Violins continue the sixteenth-note pattern. Timpani continues the rhythmic pattern. Cello continues the eighth-note accompaniment.

36

Vlns.

Timp.

Cbs.

Measures 36-46: Violins play a sustained chord. Timpani and Cello are silent.

47

Vlns.

Timp.

Cbs.

Measures 47-57: Violins play a sustained chord. Timpani and Cello are silent.

58

Vlns.

Timp.

Cbs.

Measures 58-60: Violins play a sustained chord. Timpani and Cello are silent.

66

Vlms.

Timp.

Cbs.

70

Vlms.

Timp.

Cbs.

72

Vlms.

Timp.

Cbs.

74

Vlms.

Timp.

Cbs.

76

Vlms.

Timp.

Cbs.

78

Vlns.

Timp.

Cbs.

Violins (Vlns.) play a continuous sixteenth-note arpeggiated pattern. Timpani (Timp.) play a melodic line with a dotted half note followed by a quarter note, then a half note followed by a quarter note. Cymbals (Cbs.) play a single dotted half note followed by a quarter note.

80

Vlns.

Timp.

Cbs.

Violins (Vlns.) play a continuous sixteenth-note arpeggiated pattern. Timpani (Timp.) play a melodic line with a dotted half note followed by a quarter note, then a half note followed by a quarter note. Cymbals (Cbs.) play a single dotted half note followed by a quarter note.

82

Vlns.

Timp.

Cbs.

Violins (Vlns.) play a continuous sixteenth-note arpeggiated pattern. Timpani (Timp.) play a melodic line with a dotted half note followed by a quarter note, then a half note followed by a quarter note. Cymbals (Cbs.) play a single dotted half note followed by a quarter note.

84

Vlns.

Timp.

Cbs.

Violins (Vlns.) play a continuous sixteenth-note arpeggiated pattern. Timpani (Timp.) play a melodic line with a dotted half note followed by a quarter note, then a half note followed by a quarter note. Cymbals (Cbs.) play a single dotted half note followed by a quarter note.

86

Vlns.

Timp.

Cbs.

Violins (Vlns.) play a continuous sixteenth-note arpeggiated pattern. Timpani (Timp.) play a melodic line with a dotted half note followed by a quarter note, then a half note followed by a quarter note. Cymbals (Cbs.) play a single dotted half note followed by a quarter note.

88

Vlms.

Timp.

Cbs.

Measures 88-89. The Violins (Vlms.) play a continuous sixteenth-note tremolo. The Timpani (Timp.) and Contrabass (Cbs.) parts are shown below. The Timp. part has a melodic line with a slur over measures 88 and 89. The Cbs. part has a single note in measure 89.

90

Vlms.

Timp.

Cbs.

Measures 90-91. The Violins (Vlms.) play a continuous sixteenth-note tremolo. The Timpani (Timp.) and Contrabass (Cbs.) parts are shown below. The Timp. part has a melodic line with a slur over measures 90 and 91. The Cbs. part has a single note in measure 91.

92

Vlms.

Timp.

Cbs.

Measures 92-93. The Violins (Vlms.) play a continuous sixteenth-note tremolo. The Timpani (Timp.) and Contrabass (Cbs.) parts are shown below. The Timp. part has a melodic line with a slur over measures 92 and 93. The Cbs. part has a single note in measure 93.

94

Vlms.

Timp.

Cbs.

Measures 94-95. The Violins (Vlms.) play a continuous sixteenth-note tremolo. The Timpani (Timp.) and Contrabass (Cbs.) parts are shown below. The Timp. part has a melodic line with a slur over measures 94 and 95. The Cbs. part has a single note in measure 95.

96

Vlms.

Timp.

Cbs.

Measures 96-97. The Violins (Vlms.) play a continuous sixteenth-note tremolo. The Timpani (Timp.) and Contrabass (Cbs.) parts are shown below. The Timp. part has a melodic line with a slur over measures 96 and 97. The Cbs. part has a single note in measure 97.

98

Vlms.

Timp.

Cbs.

100

Vlms.

Timp.

Cbs.