

Boss 2

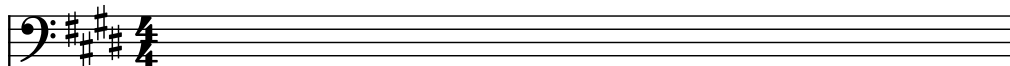
Composer: Barrie Gledden

Game: Imperium

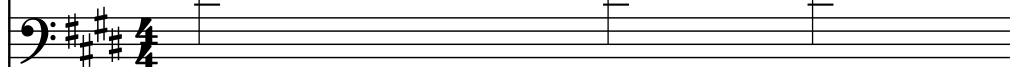
pianogame.org

♩ = 125

Honky Tonk Piano, Track 1



Violoncello, Track 2

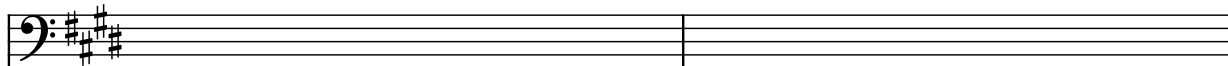


Harpsichord, Track 3

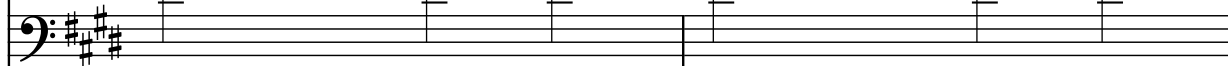


2

Hnk. Pno.



Vc.

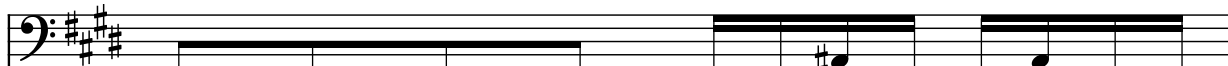


Hch.

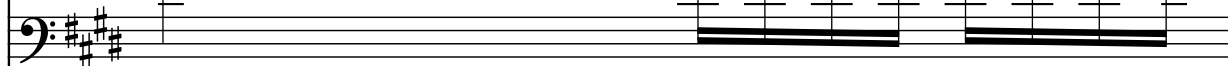


4

Hnk. Pno.



Vc.

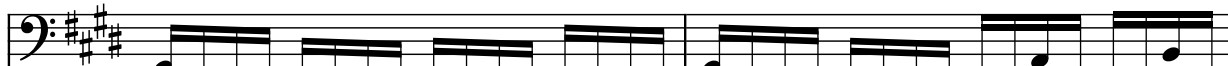


Hch.



5

Hnk. Pno.



Vc.



Hch.



7

Hnk. Pno.

Vc.

Hch.

Measures 7-8 of the musical score. The Hnk. Pno. part is in the bass clef with a key signature of three sharps (F#, C#, G#). The Vc. part is in the bass clef with a key signature of three sharps. The Hch. part is in the treble clef with a key signature of three sharps. All three parts feature a continuous eighth-note pattern.

9

Hnk. Pno.

Vc.

Hch.

Measures 9-10 of the musical score. The Hnk. Pno. part is in the bass clef with a key signature of three sharps (F#, C#, G#). The Vc. part is in the bass clef with a key signature of three sharps. The Hch. part is in the treble clef with a key signature of three sharps. All three parts feature a continuous eighth-note pattern.

11

Hnk. Pno.

Vc.

Hch.

Measures 11-12 of the musical score. The Hnk. Pno. part is in the bass clef with a key signature of three sharps (F#, C#, G#). The Vc. part is in the bass clef with a key signature of three sharps. The Hch. part is in the treble clef with a key signature of three sharps. All three parts feature a continuous eighth-note pattern.

13

Hnk. Pno.

Vc.

Hch.

15

Hnk. Pno.

Vc.

Hch.

17

Hnk. Pno.

Vc.

Hch.

19

Hnk. Pno.

Vc.

Hch.

21

Hnk. Pno.

Vc.

Hch.

Measures 21-22. Hnk. Pno. and Vc. are in bass clef with key signature of three sharps. Hch. is in treble clef with key signature of three sharps. Hnk. Pno. and Vc. have sparse notes, while Hch. has a continuous eighth-note melody.

23

Hnk. Pno.

Vc.

Hch.

Measures 23-24. Hnk. Pno. and Vc. are in bass clef with key signature of three sharps. Hch. is in treble clef with key signature of three sharps. Hnk. Pno. and Vc. have sparse notes, while Hch. has a continuous eighth-note melody.

25

Hnk. Pno.

Vc.

Hch.

Measures 25-26. Hnk. Pno. and Vc. are in bass clef with key signature of three sharps. Hch. is in treble clef with key signature of three sharps. Hnk. Pno. and Vc. have a continuous eighth-note melody, while Hch. has a continuous eighth-note melody.

27

Hnk. Pno.

Vc.

Hch.

Measures 27-28. Hnk. Pno. (bass clef, key of D major) plays a melodic line. Vc. (bass clef, key of D major) plays a rhythmic accompaniment. Hch. (treble clef, key of D major) is silent.

29

Hnk. Pno.

Vc.

Hch.

Measures 29-30. Hnk. Pno. (bass clef, key of D major) plays a melodic line. Vc. (bass clef, key of D major) plays a rhythmic accompaniment. Hch. (treble clef, key of D major) is silent.

31

Hnk. Pno.

Vc.

Hch.

Measures 31-32. Hnk. Pno. (bass clef, key of D major) plays a melodic line. Vc. (bass clef, key of D major) plays a rhythmic accompaniment. Hch. (treble clef, key of D major) is silent.

32

Hnk. Pno.

Vc.

Hch.

Measures 33-34. Hnk. Pno. (bass clef, key of D major) plays a melodic line. Vc. (bass clef, key of D major) plays a rhythmic accompaniment. Hch. (treble clef, key of D major) plays a melodic line.

34

Hnk. Pno.

Vc.

Hch.

36

Hnk. Pno.

Vc.

Hch.

38

Hnk. Pno.

Vc.

Hch.

40

Hnk. Pno.

Vc.

Hch.

42

Hnk. Pno.

Vc.

Hch.

44

Hnk. Pno.

Vc.

Hch.

46

Hnk. Pno.

Vc.

Hch.

48

Hnk. Pno.

Vc.

Hch.

Measures 48-49. Hnk. Pno. and Vc. have whole rests in measure 48 and half notes in measure 49. Hch. has a continuous eighth-note melody in both measures.

50

Hnk. Pno.

Vc.

Hch.

Measures 50-51. Hnk. Pno. and Vc. have whole rests in measure 50 and half notes in measure 51. Hch. has a continuous eighth-note melody in measure 50 and a whole rest in measure 51.

52

Hnk. Pno.

Vc.

Hch.

Measures 52-53. Hnk. Pno. and Vc. have continuous eighth-note melodies in both measures. Hch. has whole rests in both measures.

54

Hnk. Pno.

Vc.

Hch.

Measures 54-55. Hnk. Pno. (bass clef, key of D major) plays a melodic line. Vc. (bass clef, key of D major) plays a rhythmic accompaniment. Hch. (treble clef, key of D major) is silent.

56

Hnk. Pno.

Vc.

Hch.

Measures 56-57. Hnk. Pno. (bass clef, key of D major) plays a melodic line. Vc. (bass clef, key of D major) plays a rhythmic accompaniment. Hch. (treble clef, key of D major) is silent.

58

Hnk. Pno.

Vc.

Hch.

Measures 58-59. Hnk. Pno. (bass clef, key of D major) plays a melodic line. Vc. (bass clef, key of D major) plays a rhythmic accompaniment. Hch. (treble clef, key of D major) plays a melodic line.