

# Password Screen

Composer: Takashi Tateishi

Game: Mega Man 2

[pianogame.org](http://pianogame.org)

♩ = 138

Contrabass, Acoustic Guitar

5-str. Electric Bass, Fingered Bass

Oboe, Oboe

3

Cb.

El. B.

Ob.

6

Cb.

El. B.

Ob.

9

Cb.

El. B.

Ob.

This musical score page contains three systems of staves for three instruments: Contrabass (Cb.), Euphonium/Bass (El. B.), and Oboe (Ob.). The key signature is B-flat major (two flats). The time signature is not explicitly shown but appears to be 4/4 based on the note values.

**System 1 (Measures 12-14):**

- Cb.:** Measures 12-14 feature a complex, rapid sixteenth-note pattern with many accidentals, written in a high register.
- El. B.:** Measures 12-14 feature a steady eighth-note pattern in the lower register.
- Ob.:** Measure 12 is a whole rest. Measures 13-14 feature a melodic line with eighth and quarter notes.

**System 2 (Measures 15-17):**

- Cb.:** Measures 15-17 continue the complex sixteenth-note pattern.
- El. B.:** Measures 15-17 continue the eighth-note pattern.
- Ob.:** Measure 15 has a quarter note followed by an eighth rest. Measure 16 has a quarter note followed by a whole rest. Measure 17 is a whole note.

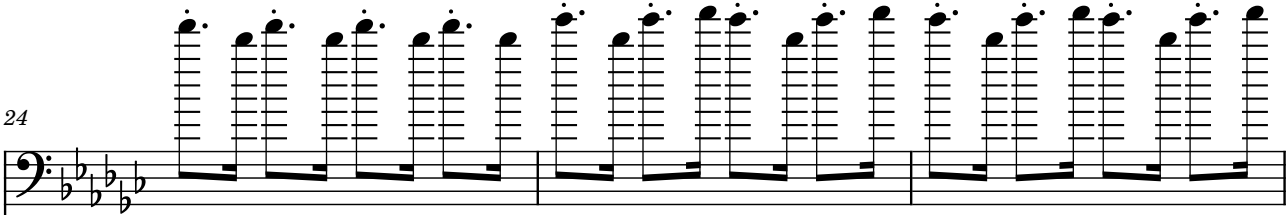
**System 3 (Measures 18-20):**


- Cb.:** Measures 18-20 continue the complex sixteenth-note pattern.
- El. B.:** Measures 18-20 continue the eighth-note pattern.
- Ob.:** Measure 18 is a half note. Measure 19 is a whole note. Measure 20 features a half note followed by a quarter note.

**System 4 (Measures 21-23):**

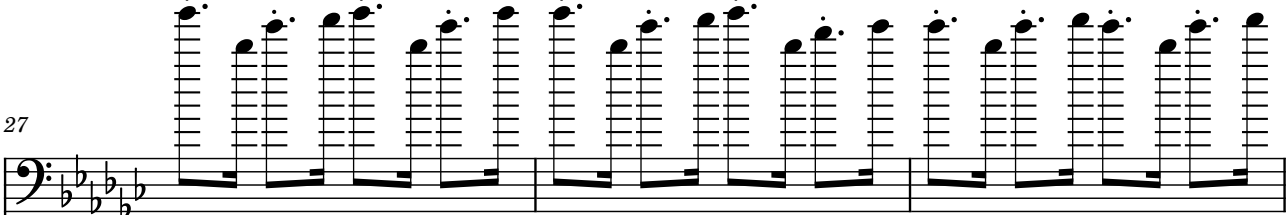
- Cb.:** Measures 21-23 continue the complex sixteenth-note pattern.
- El. B.:** Measures 21-23 continue the eighth-note pattern.
- Ob.:** Measure 21 is a whole rest. Measure 22 is a half note. Measure 23 is a whole note.


24

Cb. 

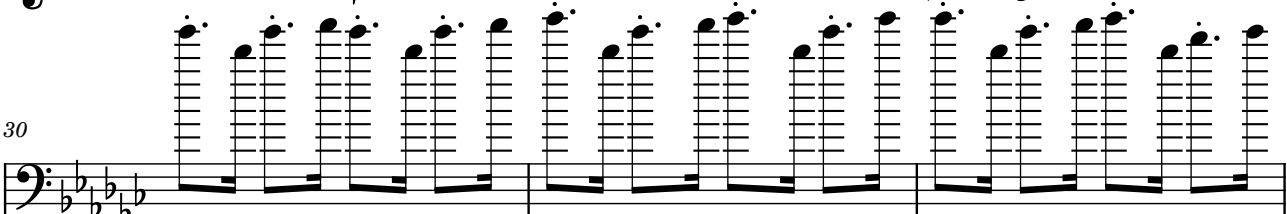
El. B. 

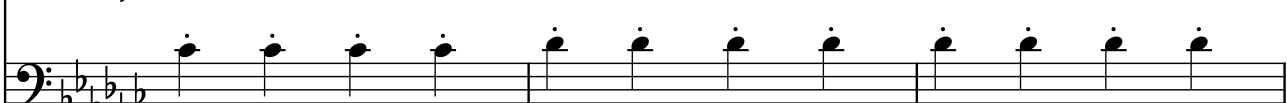
27

Cb. 

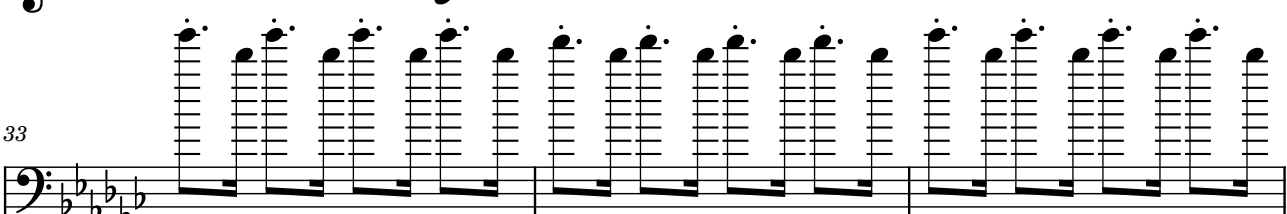
El. B. 


30

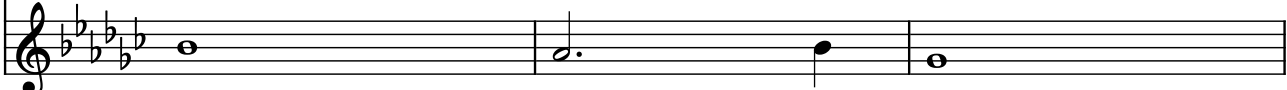
Cb. 

El. B. 

33

Cb. 

El. B. 

Ob. 

36

Cb.

El. B.

Ob.

39

Cb.

El. B.

Ob.

42

Cb.

El. B.

Ob.

45

Cb.

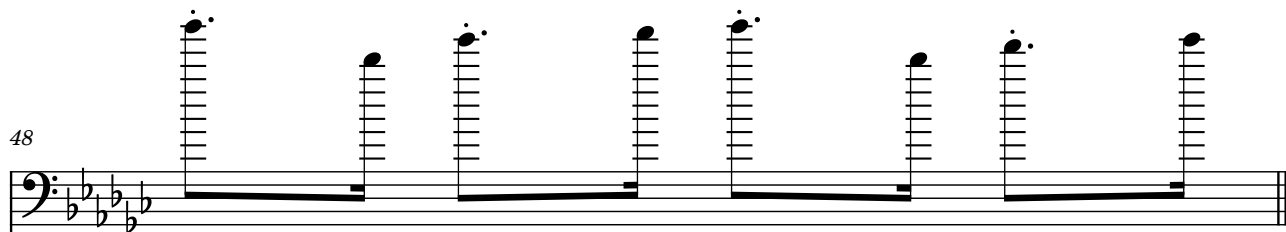
El. B.

Ob.

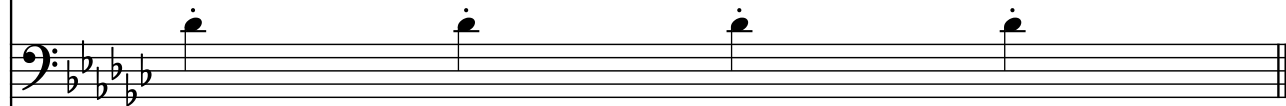
The image displays a musical score for three instruments: Cb. (Contrabass), El. B. (Euphonium), and Ob. (Oboe). The score is organized into four systems, each starting with a measure number (36, 39, 42, 45). The key signature is B-flat major (two flats). The Cb. part is written in bass clef and features a complex, rapid melodic line with many beamed notes. The El. B. part is also in bass clef and plays a simpler, more rhythmic accompaniment. The Ob. part is in treble clef and provides a melodic counterpoint. The notation includes various musical symbols such as notes, rests, and beams.

48

Cb.



El. B.



Ob.

