

# **Cyber Peacock's Stage (3) (GS)** **(v1.1)**

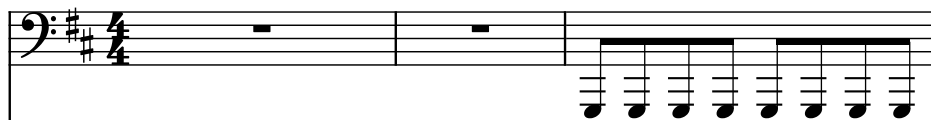
Composer: Toshihiko Horiyama

Game: Mega Man X4

[pianogame.org](http://pianogame.org)

♩ = 170

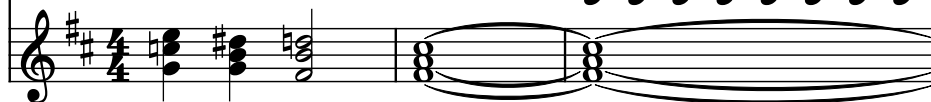
Bass Synthesizer, Synth Bass 3



Bass Synthesizer, Synth Bass 101



Saw Synthesizer, Saw Wave

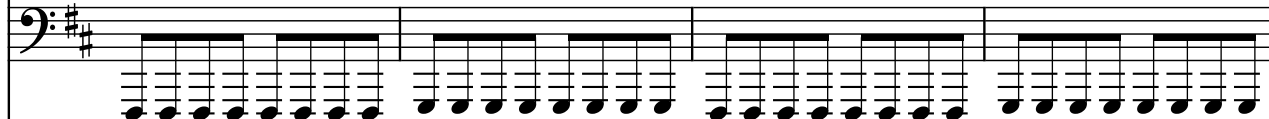


4

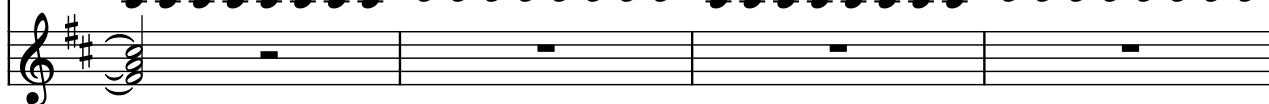
Synth.



Synth.

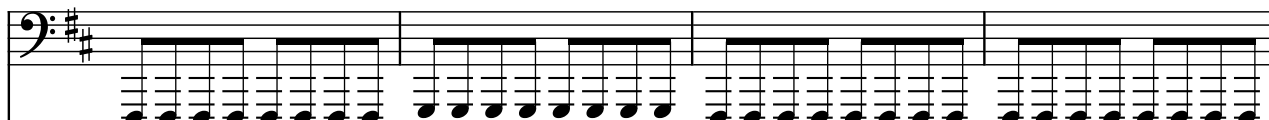


Synth.

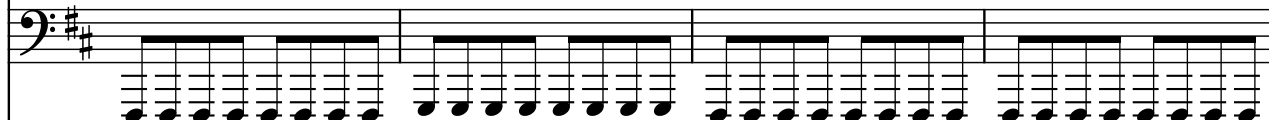


8

Synth.



Synth.



Synth.



12

Synth.



Synth.



Synth.



15

Synth.

Synth.

Synth.

Measures 15-17. The first two staves (bass clef) show a rhythmic pattern of eighth and sixteenth notes with slurs and ties. The third staff (treble clef) is empty.

18

Synth.

Synth.

Synth.

Measures 18-21. The first two staves (bass clef) show a rhythmic pattern of eighth and sixteenth notes with slurs and ties. The third staff (treble clef) is empty.

22

Synth.

Synth.

Synth.

Measures 22-25. The first two staves (bass clef) show a rhythmic pattern of eighth and sixteenth notes with slurs and ties. The third staff (treble clef) is empty.

26

Synth.

Synth.

Synth.

Measures 26-29. The first two staves (bass clef) show a rhythmic pattern of eighth and sixteenth notes with slurs and ties. The third staff (treble clef) is empty.

30

Synth.

Synth.

Synth.

33

Synth.

Synth.

Synth.

37

Synth.

Synth.

Synth.

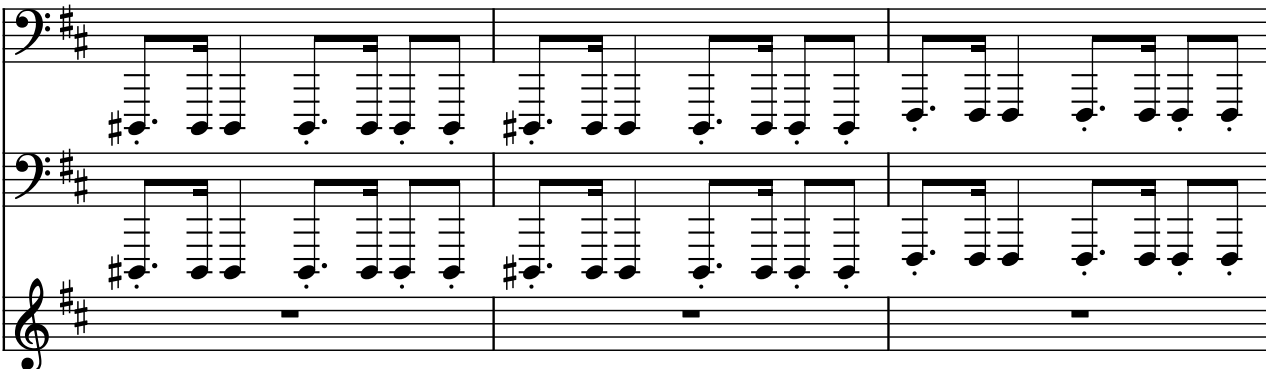
41

Synth.

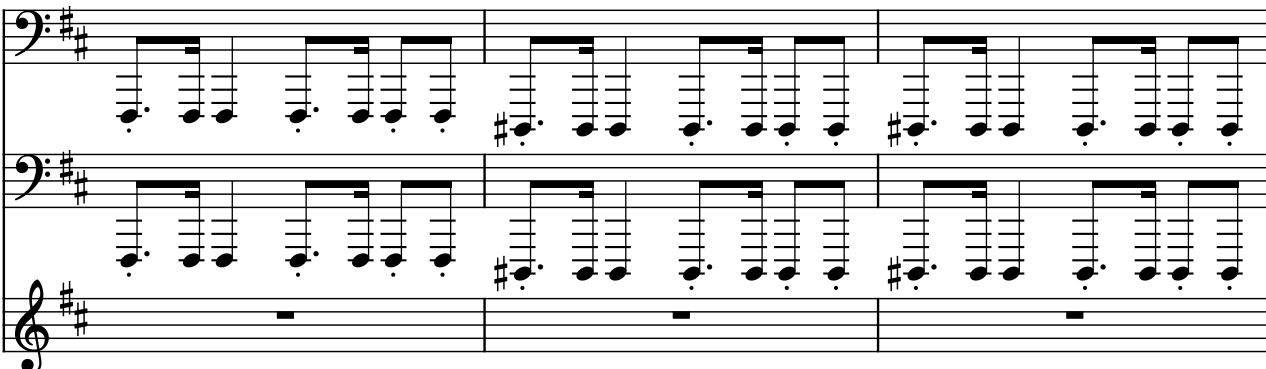
Synth.

Synth.

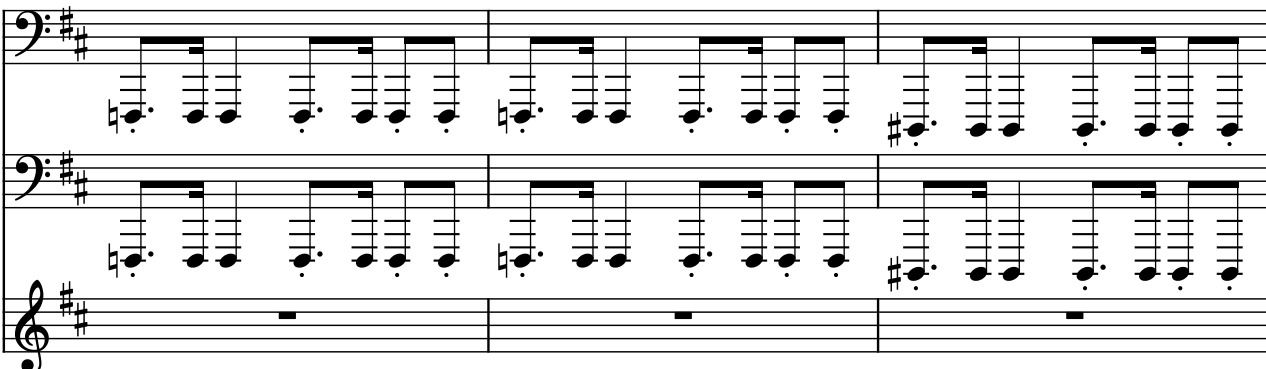
46

Synth. 

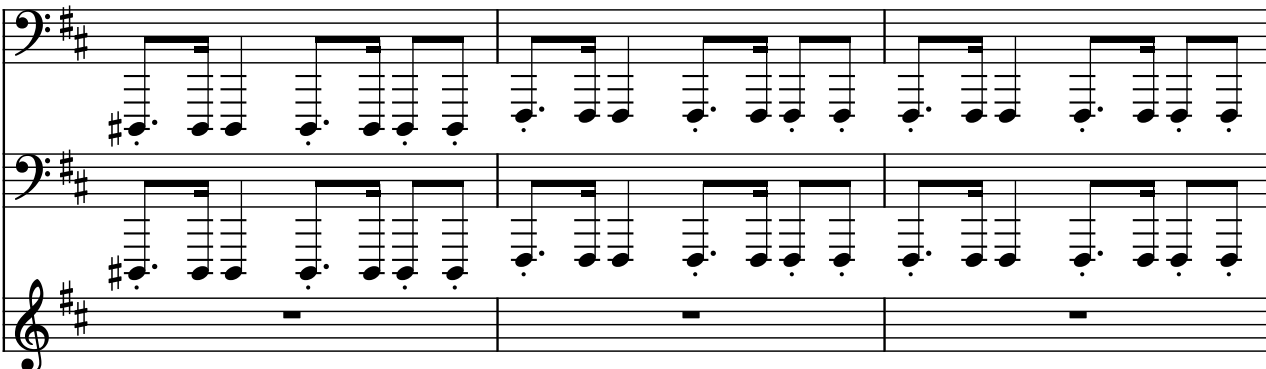
49

Synth. 

52

Synth. 

55

Synth. 

58

Synth.

Synth.

Synth.

61

Synth.

Synth.

Synth.

64

Synth.

Synth.

Synth.

Synth.


68


Synth.

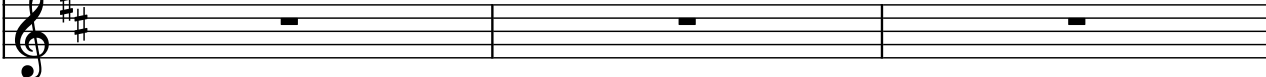
Synth.

Synth.

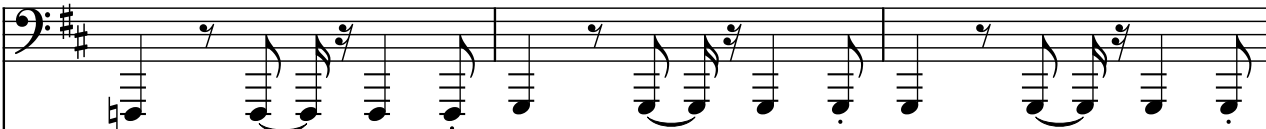
71


Synth. 

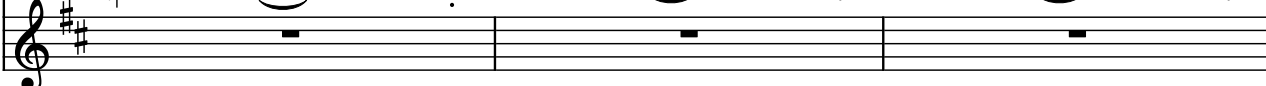
Synth. 

Synth. 

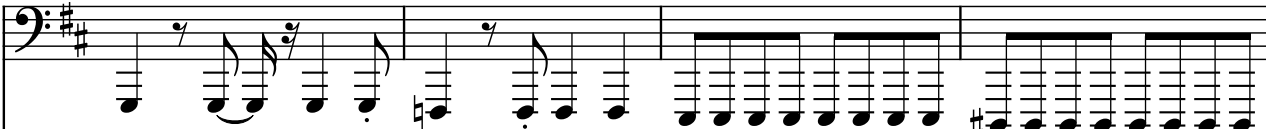
74


Synth. 


Synth. 

Synth. 


77


Synth. 


Synth. 

Synth. 

81

Synth. 

Synth. 

Synth. 

85

Synth.

Synth.

Synth.

Measures 85-88. The first two staves (bass clef) show a complex rhythmic pattern with many sixteenth notes. The third staff (treble clef) is mostly empty with some rests.

89

Synth.

Synth.

Synth.

Measures 89-91. The first two staves (bass clef) show a complex rhythmic pattern with many sixteenth notes. The third staff (treble clef) is mostly empty with some rests.

92

Synth.

Synth.

Synth.

Measures 92-95. The first two staves (bass clef) show a complex rhythmic pattern with many sixteenth notes. The third staff (treble clef) is mostly empty with some rests.

96

Synth.

Synth.

Synth.

Measures 96-99. The first two staves (bass clef) show a complex rhythmic pattern with many sixteenth notes. The third staff (treble clef) is mostly empty with some rests.



100

Synth.

105

Synth.

108

Synth.

111

Synth.

114

Synth.

Synth.

Synth.

117

Synth.

Synth.

Synth.

120

Synth.

Synth.

Synth.