

Bubbleman's Stage

Composer: Manami Matsumae

Game: Mega Man II

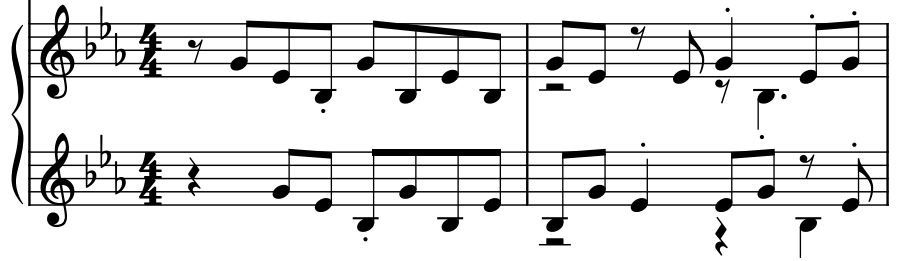
pianogame.org

♩ = 174

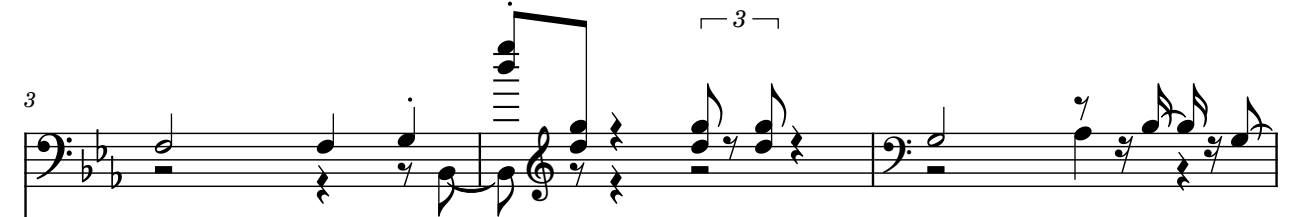
Brass Synthesizer, Bubbleman Theme



New Age Synthesizer, Mega Man 2



Synth.



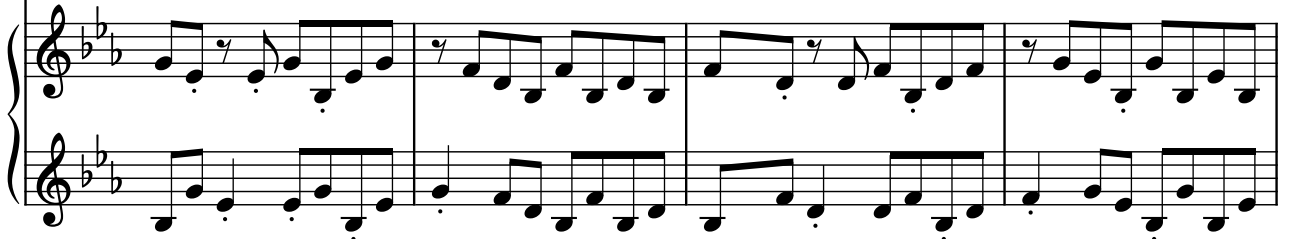
Synth.



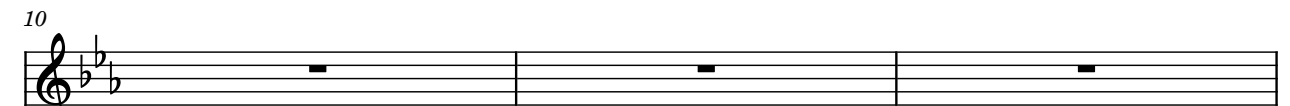
Synth.



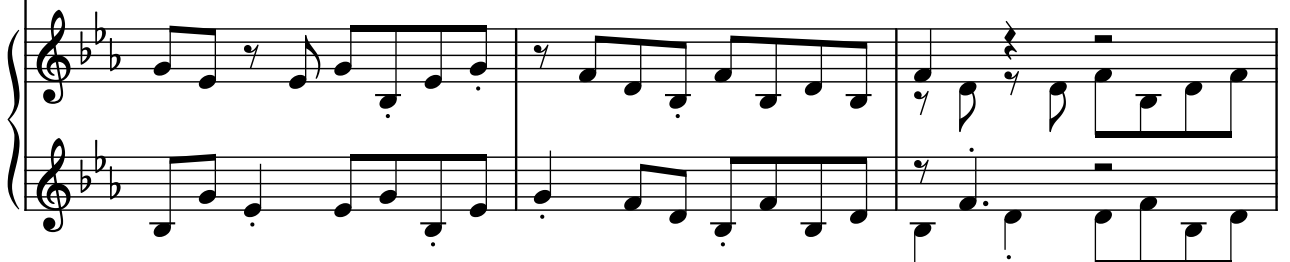
Synth.



Synth.



Synth.



13

Synth.

Synth.

3

16

Synth.

Synth.

3

3

19

Synth.

Synth.

3

3

23

Synth.

Synth.

3

3

26

Synth.

Synth.

3

28

Synth.

Synth.

3

3

3

31

Synth.

Synth.

3

33

Synth.

Synth.

3

36

Synth.

Synth.

39

Synth.

Synth.

42

Synth.

Synth.

46

Synth.

Synth.

50

Synth.

Synth.

3

52

Synth.

Synth.

52

Synth.

Synth.

55

Synth.

Synth.

3

57

Synth.

Synth.

60

Synth.

Synth.

3

The image shows a musical score for two synth parts, labeled 'Synth.' on the left. The score is in 4/4 time and features a key signature of two flats (B-flat and E-flat). Measure 60: The top synth part has a whole rest. The bottom synth part has a quarter rest, followed by an eighth note G4, an eighth note F#4, and a quarter note E4. Measure 61: The top synth part has a whole rest. The bottom synth part has a quarter note D4, an eighth note C4, an eighth note B3, and a quarter note A3. Measure 62: The top synth part has a whole rest. The bottom synth part has a quarter note G3, an eighth note F#3, an eighth note E3, and a quarter note D3. Measure 63: The top synth part has a whole rest. The bottom synth part has a quarter note C3, an eighth note B2, an eighth note A2, and a quarter note G2. A triplet of eighth notes (G4, F#4, E4) is marked with a '3' and a bracket in measure 61. The score ends with a double bar line in measure 63.