

Yahtzee Championship (XG)

Composer: Steve Ouimette

Game: Yahtzee

pianogame.org

♩ = 120

5

8

10

12

14

16

18

23

25

27

29

31

33

The image displays a musical score for the song "The Rose Tree." It is written for a single melodic line on a treble clef staff in 4/4 time. The tempo is indicated as quarter note = 120. The score includes measure numbers 5, 8, 10, 12, 14, 16, 18, 23, 25, 27, 29, 31, and 33. The melody is composed of eighth and sixteenth notes, with many measures containing beamed sixteenth notes. The piece concludes with a final double bar line at measure 33.

35

38

40

43

47

49

50

51

52


54

59


61

63


64




66



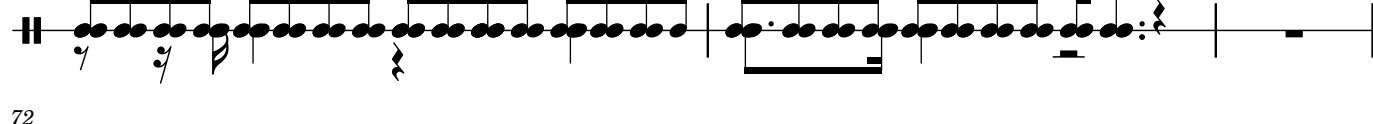
67



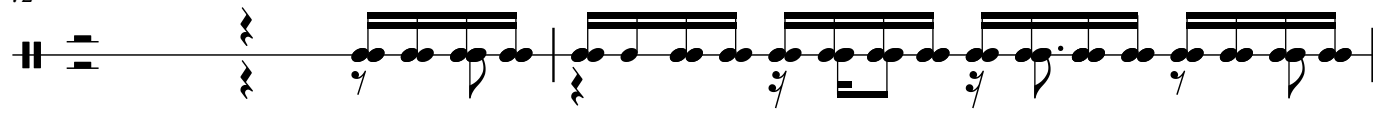
69



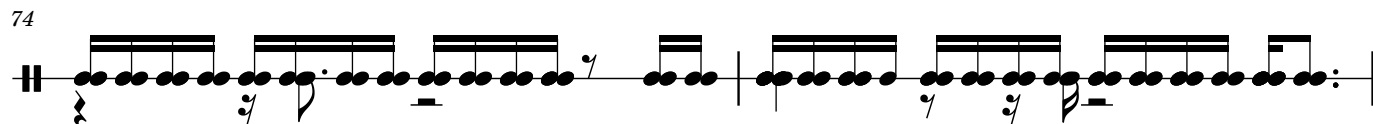
72




74




76



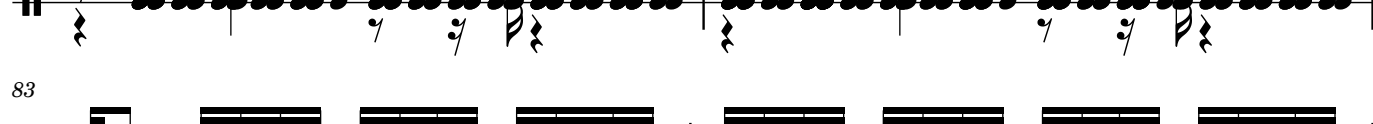
81



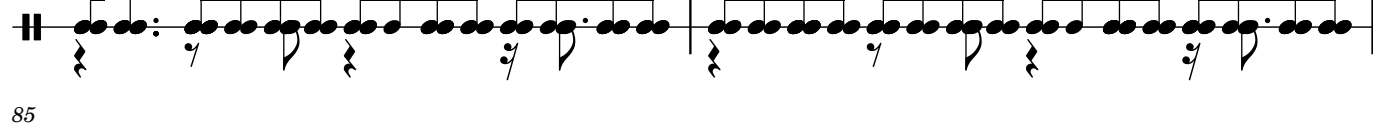
83



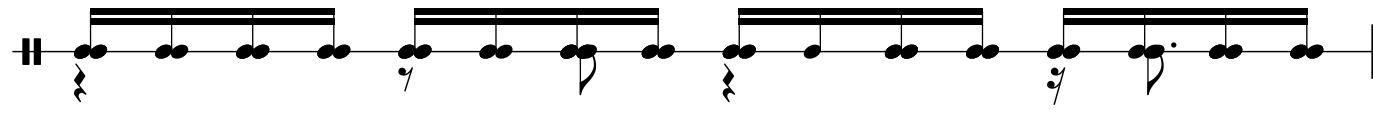
85



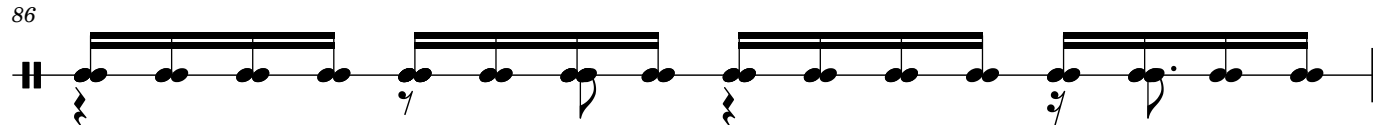
86



87



89



93

95

97

99

102

105

107

109

113

115

117

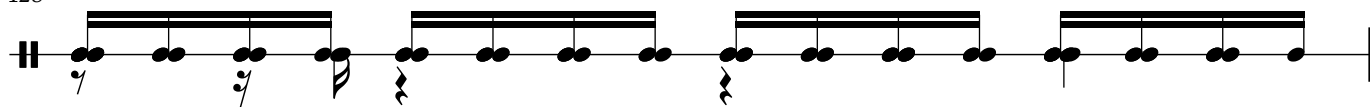
119

123

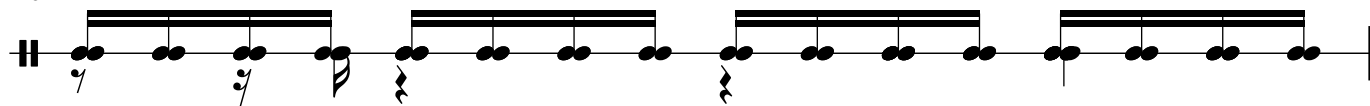
126



128



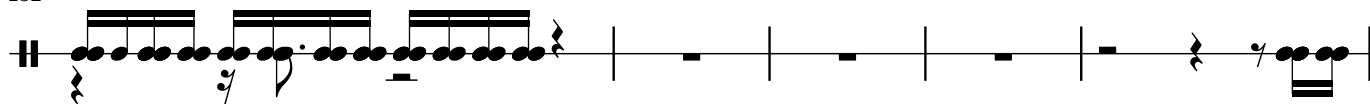
129



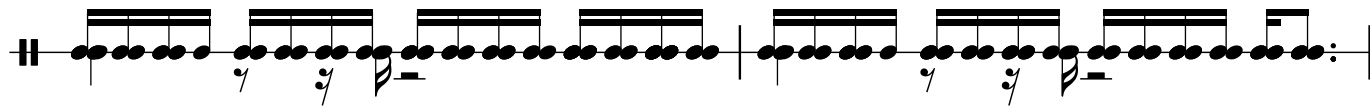
130



132



137



139



140



141



142

