

# Mid Boss Battle - "Crash II" (v2.0)

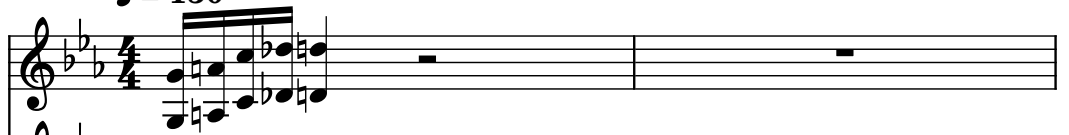
Composer: Ippo Yamada

Game: Mega Man Zero 2

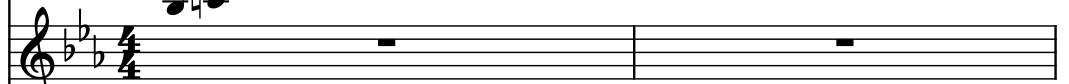
[pianogame.org](http://pianogame.org)

♩ = 150

Brass Synthesizer, Staff



Electric Guitar, Staff-7

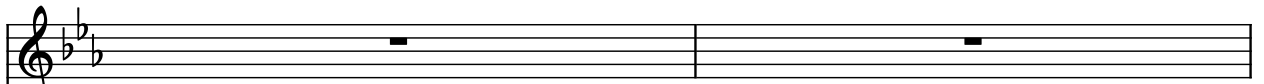


Electric Guitar, Staff-2

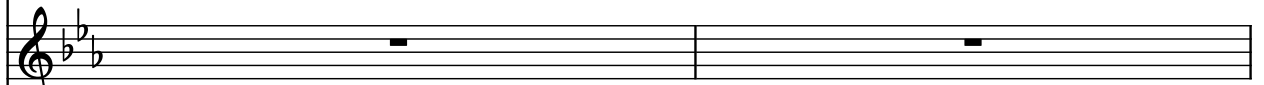


3

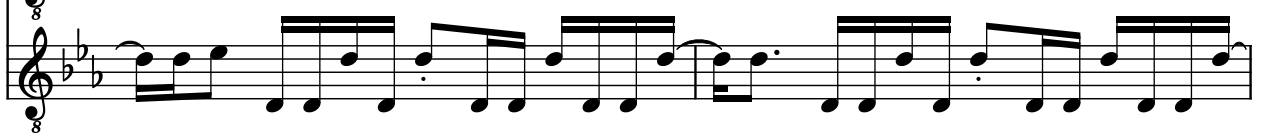
Synth.



El. Guit.

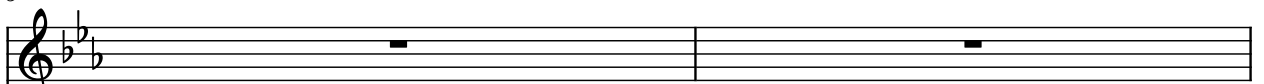


El. Guit.

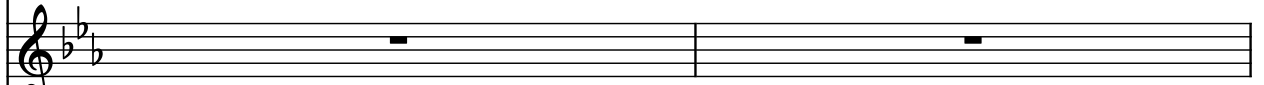


5

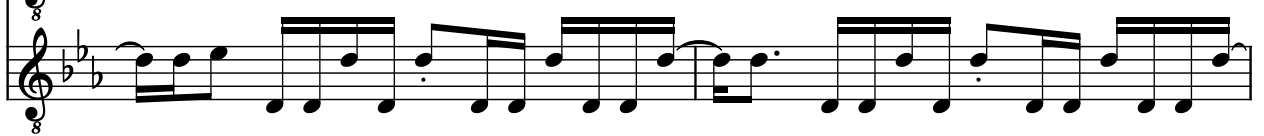
Synth.



El. Guit.

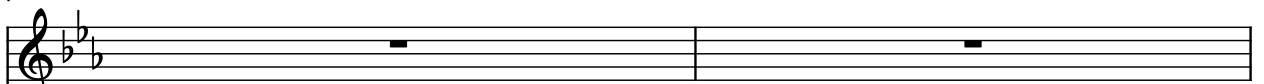


El. Guit.

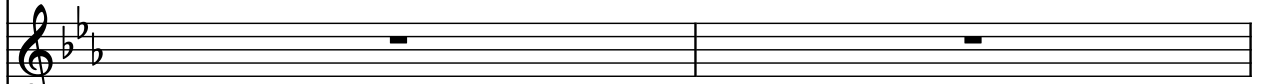


7

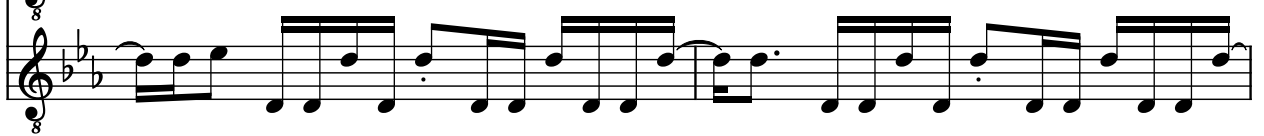
Synth.



El. Guit.

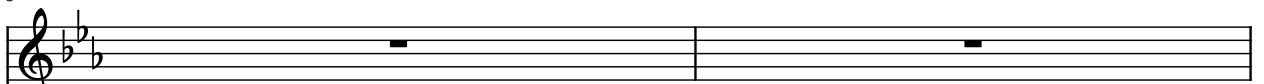


El. Guit.

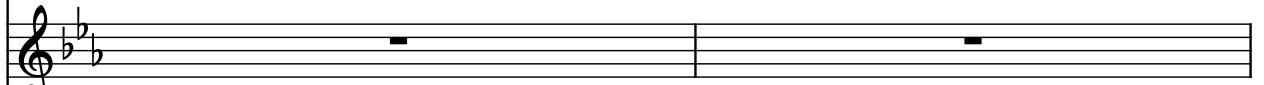


9

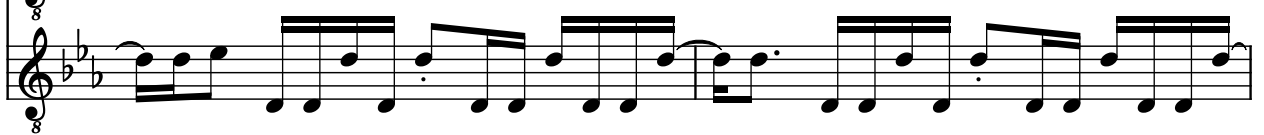
Synth.



El. Guit.



El. Guit.



11

Synth.

El. Guit.

El. Guit.

8

13

Synth.

El. Guit.

El. Guit.

8

15

Synth.

El. Guit.

El. Guit.

8

17

Synth.

El. Guit.

El. Guit.

8

19

Synth.

El. Guit.

El. Guit.

8

21

Synth.

El. Guit.

El. Guit.

8

23

Synth.

El. Guit.

El. Guit.

8

25

Synth.

El. Guit.

El. Guit.

8

27

Synth.

El. Guit.

El. Guit.

8

29

Synth.

El. Guit.

El. Guit.

8

31

Synth.

El. Guit.

El. Guit.



33

Synth.

El. Guit.

El. Guit.

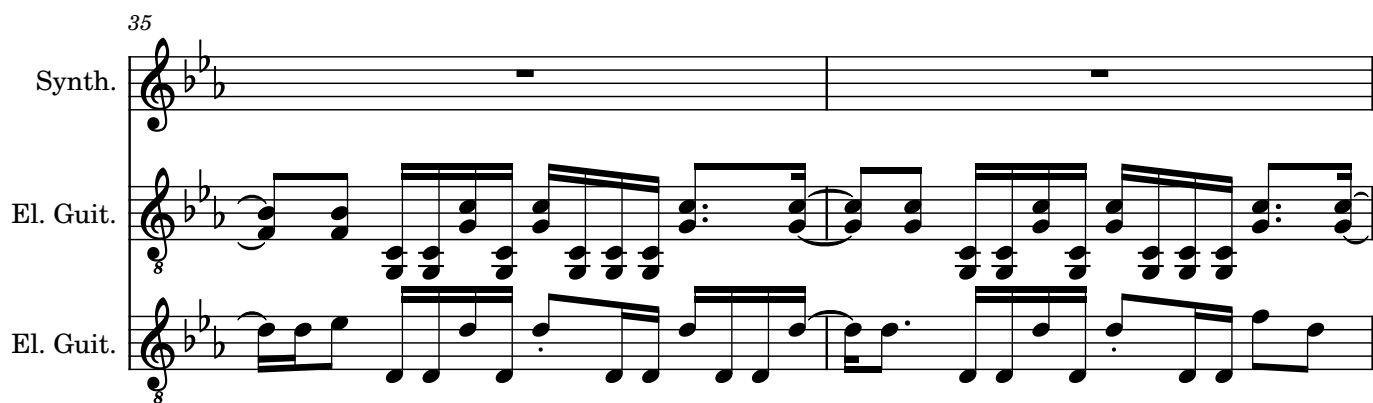


35

Synth.

El. Guit.

El. Guit.



37

Synth.

El. Guit.

El. Guit.



39

Synth.

El. Guit.

El. Guit.

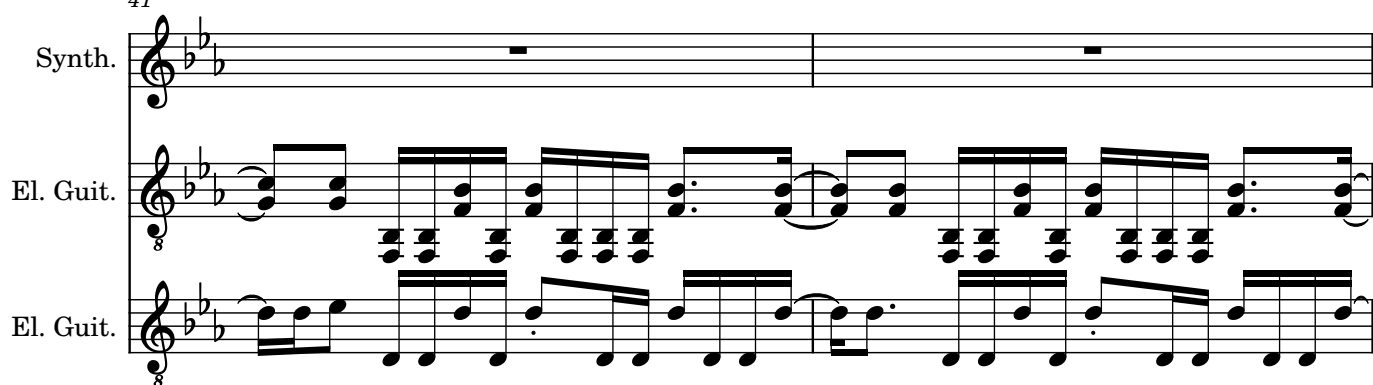


41

Synth.

El. Guit.

El. Guit.

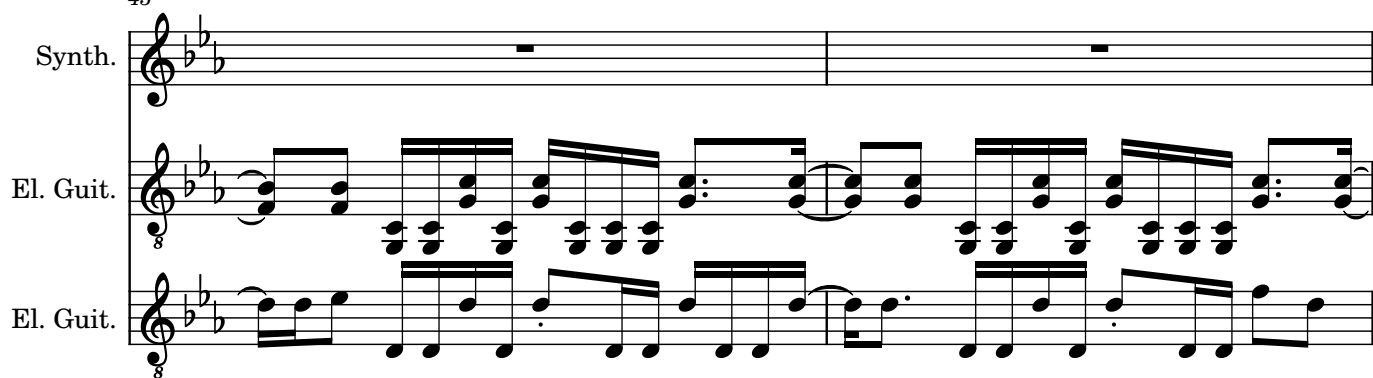


43

Synth.

El. Guit.

El. Guit.



45

Synth.

El. Guit.

El. Guit.



47

Synth.

El. Guit.

El. Guit.

49

Synth.

El. Guit.

El. Guit.

51

Synth.

El. Guit.

El. Guit.

53

Synth.

El. Guit.

El. Guit.

55

Synth.

El. Guit.

El. Guit.

This system contains measures 55 and 56. The Synth. and El. Guit. staves are silent, marked with whole rests. The bottom El. Guit. staff features a continuous eighth-note melody in B-flat major, starting on G4 and moving in a stepwise fashion across the measures.

57

Synth.

El. Guit.

El. Guit.

This system contains measures 57 and 58. The Synth. and El. Guit. staves are silent, marked with whole rests. The bottom El. Guit. staff continues the eighth-note melody from the previous system.

59

Synth.

El. Guit.

El. Guit.

This system contains measures 59 and 60. The Synth. and El. Guit. staves are silent, marked with whole rests. The bottom El. Guit. staff continues the eighth-note melody.

61

Synth.

El. Guit.

El. Guit.

This system contains measures 61 and 62. The Synth. and El. Guit. staves are silent, marked with whole rests. The bottom El. Guit. staff continues the eighth-note melody.

63

Synth.

El. Guit.

El. Guit.

This system contains measures 63 and 64. The Synth. and El. Guit. staves are silent, marked with whole rests. The bottom El. Guit. staff continues the eighth-note melody.



65

Synth.

El. Guit.

El. Guit.

8

67

Synth.

El. Guit.

El. Guit.

8

69

Synth.

El. Guit.

El. Guit.

8

71

Synth.

El. Guit.

El. Guit.

8

73

Synth.

El. Guit.

El. Guit.

8

75

Synth.

El. Guit.

El. Guit.

8

77

Synth.

El. Guit.

El. Guit.

8

79

Synth.

El. Guit.

El. Guit.

8

81

Synth.

El. Guit.

El. Guit.

8

83

Synth.

El. Guit.

El. Guit.

85

Synth.

El. Guit.

El. Guit.

87

Synth.

El. Guit.

El. Guit.

89

Synth.

El. Guit.

El. Guit.

91

Synth.

El. Guit.

El. Guit.

93

Synth.

El. Guit.

El. Guit.

95

Synth.

El. Guit.

El. Guit.

97

Synth.

El. Guit.

El. Guit.

99

Synth.

El. Guit.

El. Guit.

101

Synth.

El. Guit.

El. Guit.

103

Synth.

El. Guit.

El. Guit.

105

Synth.

El. Guit.

El. Guit.

107

Synth.

El. Guit.

El. Guit.

109

Synth.

El. Guit.

El. Guit.

111

Synth.

El. Guit.

El. Guit.

113

Synth.

El. Guit.

El. Guit.

115

Synth.

El. Guit.

El. Guit.