

Maze

Composer: Kazuo Sawa

Game: Golgo 13: Top Secret Episode

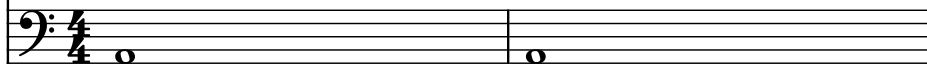
pianogame.org

♩ = 130

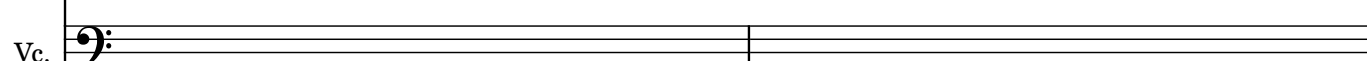
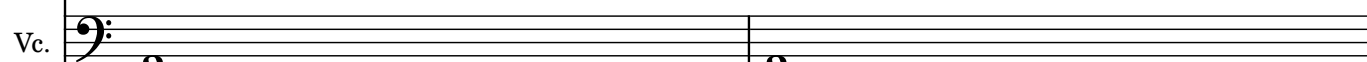
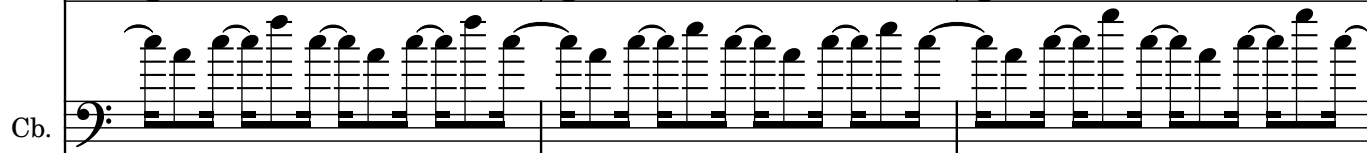
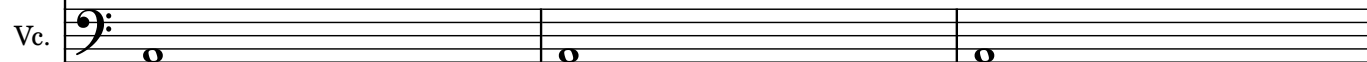
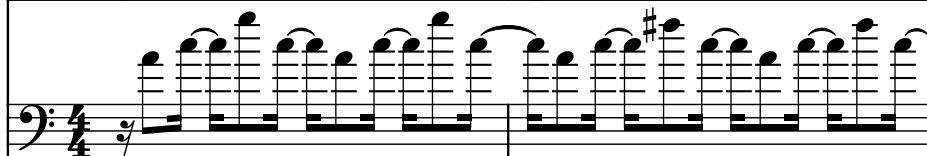
Contrabass, Melody (Double Bass)



Violoncello, Bass (Cello)



Contrabass, Echo (Double Bass)



10

Cb.

Vc.

Cb.

12

Cb.

Vc.

Cb.

14

Cb.

Vc.

Cb.

16

Cb.

Vc.

Cb.

18

Cb.

Vc.

Cb.

Measures 18-19. The Cb. (Cello) part has a melodic line with a sharp sign on the 18th measure. The Vc. (Violoncello) part has a whole note on the 18th measure and a whole note on the 19th measure. The Cb. (Cello) part has a melodic line with a sharp sign on the 18th measure.

20

Cb.

Vc.

Cb.

Measures 20-21. The Cb. (Cello) part has a melodic line. The Vc. (Violoncello) part has a whole note on the 20th measure and a whole note on the 21st measure. The Cb. (Cello) part has a melodic line.

22

Cb.

Vc.

Cb.

Measures 22-23. The Cb. (Cello) part has a melodic line with a sharp sign on the 22nd measure. The Vc. (Violoncello) part has a whole note on the 22nd measure and a whole note on the 23rd measure. The Cb. (Cello) part has a melodic line with a sharp sign on the 22nd measure.

24

Cb.

Vc.

Cb.

Measures 24-25. The Cb. (Cello) part has a melodic line. The Vc. (Violoncello) part has a whole note on the 24th measure and a whole note on the 25th measure. The Cb. (Cello) part has a melodic line.

26

Cb.

Vc.

Cb.

Measures 26-27. The Cb. part has a melodic line with a sharp sign on the 11th line. The Vc. part has a whole note on the 1st line. The bottom Cb. part has a complex melodic line with many slurs and a sharp sign on the 11th line.

28

Cb.

Vc.

Cb.

Measures 28-29. The Cb. part has a melodic line. The Vc. part has a whole note on the 1st line. The bottom Cb. part has a complex melodic line with many slurs.

30

Cb.

Vc.

Cb.

Measures 30-31. The Cb. part has a melodic line with a sharp sign on the 11th line. The Vc. part has a whole note on the 1st line. The bottom Cb. part has a complex melodic line with many slurs and a sharp sign on the 11th line.

32

Cb.

Vc.

Cb.

Measures 32-33. The Cb. part has a melodic line. The Vc. part has a whole note on the 1st line. The bottom Cb. part has a complex melodic line with many slurs.