

Eiji's Stage - "Mountain's Rage"

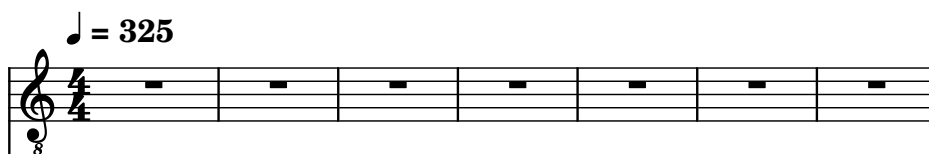
Composer: Takayuki Aihara

Game: Battle Arena Toshinden

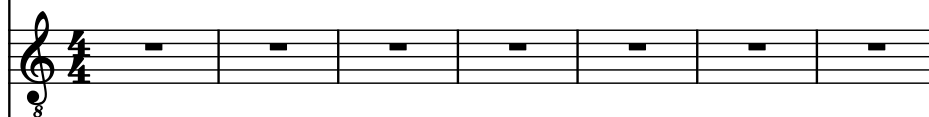
pianogame.org

♩ = 325

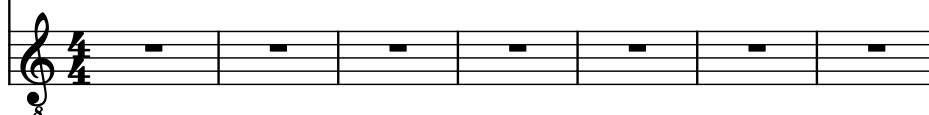
Electric Guitar, Lead Guitar Low



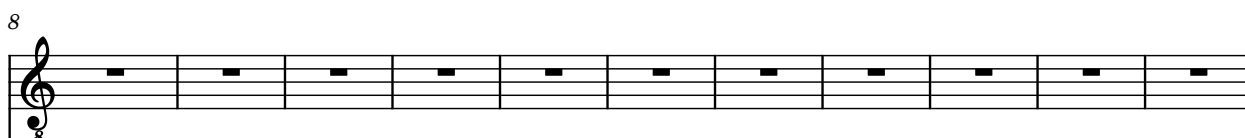
Electric Guitar, Lead Guitar High



Electric Guitar, Lead Guitar High



8
El. Guit.



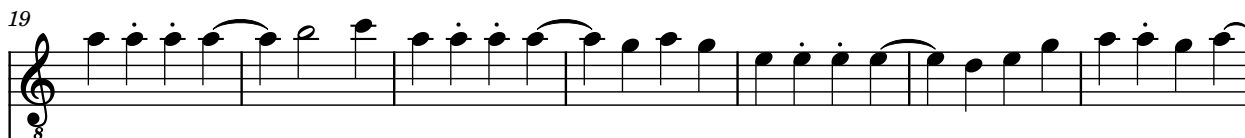
El. Guit.



El. Guit.



19
El. Guit.



El. Guit.



El. Guit.



26
El. Guit.



El. Guit.



El. Guit.



33

El. Guit.

40

El. Guit.

46

El. Guit.

55

El. Guit.

66

El. Guit.

El. Guit.

El. Guit.

77

El. Guit.

El. Guit.

El. Guit.

88

El. Guit.

El. Guit.

El. Guit.

99

El. Guit.

El. Guit.

El. Guit.

107

El. Guit.

Three staves of electric guitar notation. The top staff has a treble clef and a key signature of one sharp (F#). It contains measures 107-113. The middle and bottom staves have a treble clef and a key signature of one sharp (F#). They contain measures 107-113. The notation includes eighth notes, quarter notes, and half notes, with some measures containing rests.

114

El. Guit.

Three staves of electric guitar notation. The top staff has a treble clef and a key signature of one sharp (F#). It contains measures 114-120. The middle and bottom staves have a treble clef and a key signature of one sharp (F#). They contain measures 114-120. The notation includes eighth notes, quarter notes, and half notes, with some measures containing rests.

121

El. Guit.

Three staves of electric guitar notation. The top staff has a treble clef and a key signature of one sharp (F#). It contains measures 121-126. The middle and bottom staves have a treble clef and a key signature of one sharp (F#). They contain measures 121-126. The notation includes eighth notes, quarter notes, and half notes, with some measures containing rests.

127

El. Guit.

Three staves of electric guitar notation. The top staff has a treble clef and a key signature of one sharp (F#). It contains measures 127-133. The middle and bottom staves have a treble clef and a key signature of one sharp (F#). They contain measures 127-133. The notation includes eighth notes, quarter notes, and half notes, with some measures containing rests.

134

El. Guit.

8

El. Guit.

8

El. Guit.

8

144

El. Guit.

8

El. Guit.

8

El. Guit.

8

155

El. Guit.

8

El. Guit.

8

El. Guit.

8

166

El. Guit.

8

El. Guit.

8

El. Guit.

8

177

El. Guit.

El. Guit.

El. Guit.

187

El. Guit.

El. Guit.

El. Guit.

194

El. Guit.

El. Guit.

El. Guit.

201

El. Guit.

El. Guit.

El. Guit.

208

El. Guit.

Three staves of music for electric guitar. The first staff begins with a treble clef, a key signature of one sharp (F#), and a common time signature. It contains measures 208 through 213. The second and third staves are identical to the first. The music features a series of eighth and sixteenth notes, some beamed together, and a final measure with a whole note and a fermata. A small '8' is written below the first staff.

214

El. Guit.

Three staves of music for electric guitar. The first staff begins with a treble clef, a key signature of one sharp (F#), and a common time signature. It contains measures 214 through 219. The second and third staves are identical to the first. The music features a series of eighth and sixteenth notes, some beamed together, and a final measure with a whole note and a fermata. A small '8' is written below the first staff.