

Main Theme

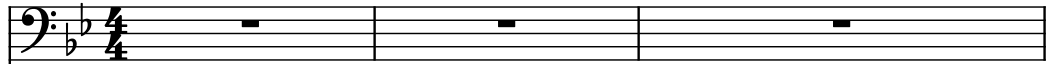
Composer: Masashi Kageyama

Game: Hiryu No Ken (Japan)

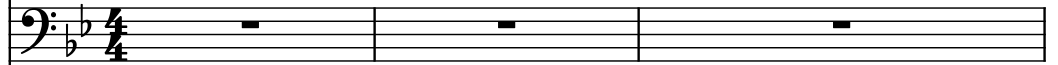
pianogame.org

♩ = 120

Contrabass, Melody



Contrabass, Melody Echo



Contrabass, Tsu Bass



4

Cb.

Musical staves for Contrabass, measures 4-6. The section consists of three staves. The top staff (labeled 'Cb.') has a whole rest in measure 4, followed by a quarter note G2 in measure 5, and a half note G2 in measure 6. The middle staff has a whole rest in measure 4, followed by a quarter note G2 in measure 5, and a half note G2 in measure 6. The bottom staff has a quarter note G2 in measure 4, followed by a quarter note F2 in measure 5, and a half note G2 in measure 6. A '3' with a bracket indicates a triplet of eighth notes in measure 6 of the bottom staff.

7

Cb.

Musical staves for Contrabass, measures 7-9. The section consists of three staves. The top staff (labeled 'Cb.') has a half note G2 in measure 7, a half note F2 in measure 8, and a half note G2 in measure 9. The middle staff has a half note G2 in measure 7, a half note F2 in measure 8, and a half note G2 in measure 9. The bottom staff has a quarter note G2 in measure 7, a quarter note F2 in measure 8, and a half note G2 in measure 9.

10

Cb.

Musical staves for Contrabass, measures 10-12. The section consists of three staves. The top staff (labeled 'Cb.') has a half note G2 in measure 10, a half note F2 in measure 11, and a half note G2 in measure 12. The middle staff has a half note G2 in measure 10, a half note F2 in measure 11, and a half note G2 in measure 12. The bottom staff has a quarter note G2 in measure 10, a quarter note F2 in measure 11, and a half note G2 in measure 12.

13

Cb.

Cb.

Cb.

16

Cb.

Cb.

Cb.

19

Cb.

Cb.

Cb.

22

Cb.

Cb.

Cb.

25

Cb.

Cb.

Cb.

3

28

Cb.

Cb.

Cb.

32

Cb.

Cb.

Cb.

35

Cb.

This system contains measures 35, 36, and 37. The first staff (Cb.) features a melodic line with eighth and sixteenth notes, including a triplet in measure 36, and a long sustain in measure 37. The second staff (Cb.) provides harmonic support with chords and moving lines. The third staff (Cb.) plays a steady eighth-note accompaniment throughout the system.

38

Cb.

This system contains measures 38, 39, and 40. The first staff (Cb.) continues its melodic development with various note values and rests. The second staff (Cb.) maintains a complex harmonic texture. The third staff (Cb.) continues the eighth-note accompaniment pattern.

41

Cb.

This system contains measures 41, 42, and 43. The first staff (Cb.) has a long rest in measure 41, followed by a melodic entry in measure 43. The second staff (Cb.) features a long sustain in measure 41 and rests in measures 42 and 43. The third staff (Cb.) continues the eighth-note accompaniment, with a change in rhythm in measure 42.

44

Cb.

Cb.

Cb.

This system contains measures 44, 45, and 46. The first two staves are for Contrabass (Cb.) and the third is for Contrabass (Cb.). The key signature is one flat (B-flat). Measure 44 features a melodic line in the first staff with a slur over a half note and a dotted half note, and a rhythmic pattern in the third staff. Measure 45 continues the melodic line in the first staff and the rhythmic pattern in the third staff. Measure 46 concludes the system with a final note in the first staff and a final note in the third staff.

47

Cb.

Cb.

Cb.

This system contains measures 47, 48, and 49. The first two staves are for Contrabass (Cb.) and the third is for Contrabass (Cb.). The key signature is one flat (B-flat). Measure 47 features a melodic line in the first staff with a slur over a half note and a dotted half note, and a rhythmic pattern in the third staff. Measure 48 continues the melodic line in the first staff and the rhythmic pattern in the third staff. Measure 49 concludes the system with a final note in the first staff and a final note in the third staff.

50

Cb.

Cb.

Cb.

This system contains measures 50, 51, and 52. The first two staves are for Contrabass (Cb.) and the third is for Contrabass (Cb.). The key signature is one flat (B-flat). Measure 50 features a melodic line in the first staff with a slur over a half note and a dotted half note, and a rhythmic pattern in the third staff. Measure 51 continues the melodic line in the first staff and the rhythmic pattern in the third staff. Measure 52 concludes the system with a final note in the first staff and a final note in the third staff.

53

Cb.

Cb.

Cb.

56

Cb.

Cb.

Cb.

The image shows three staves of music for Contrabass (Cb.). The first staff is labeled with the number 56. All three staves are in the bass clef with a key signature of two flats (B-flat and E-flat). The first staff contains a melodic line with a slur over the first four measures and a sharp sign in the fifth measure. The second staff contains a melodic line with a slur over the first four measures and a sharp sign in the fifth measure. The third staff contains a melodic line with a slur over the first four measures and a sharp sign in the fifth measure.