

Ending 2 - "Breakdown" (Orchestral Rock Mix)

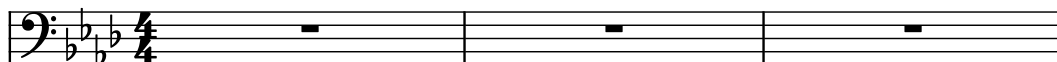
Composer: Danny Baranowsky

Game: Cave Story

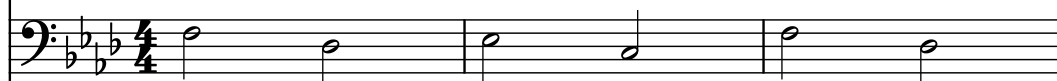
pianogame.org

$\text{♩} = 137$

Contrabass, Contrabass



Violoncello, Cello

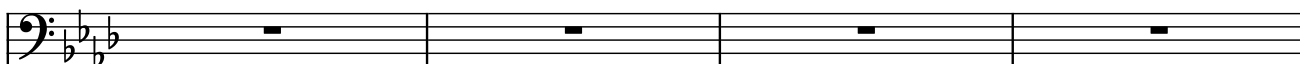


Viola, Viola

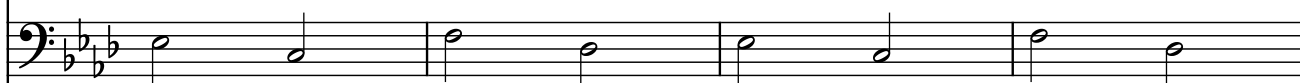


4

Cb.



Vc.

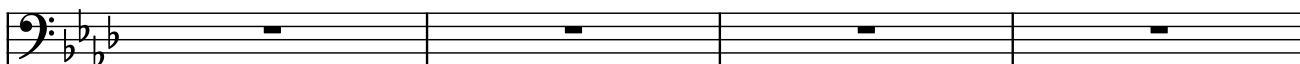


Vla.

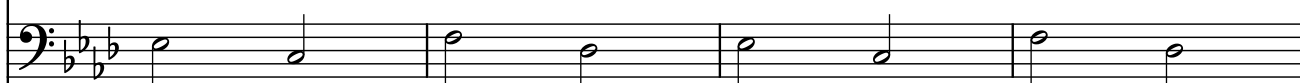


8

Cb.



Vc.



Vla.

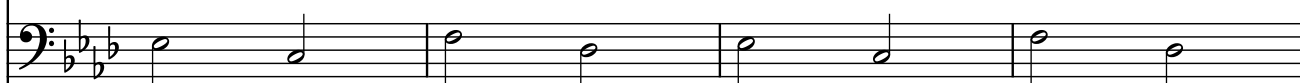


12

Cb.



Vc.



Vla.

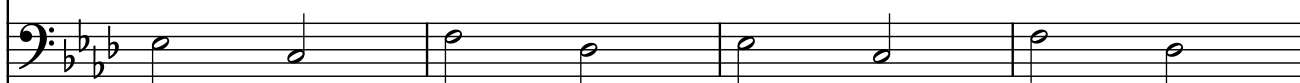


16

Cb.





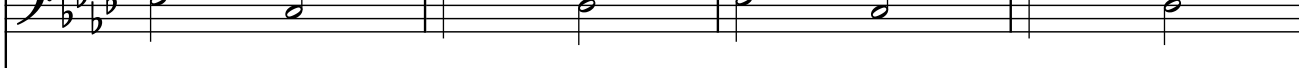

Vc.

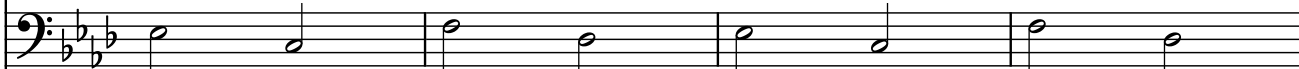









Vla.




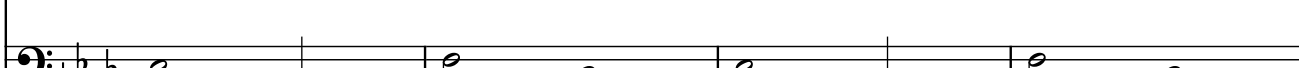
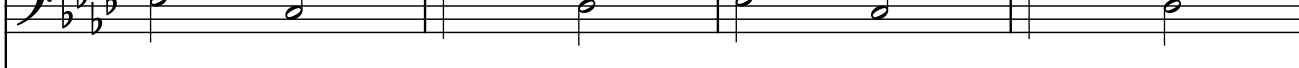

20

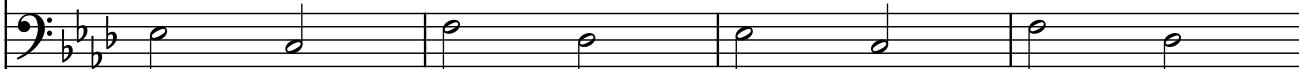

Cb.    




Vc.    

Vla.    

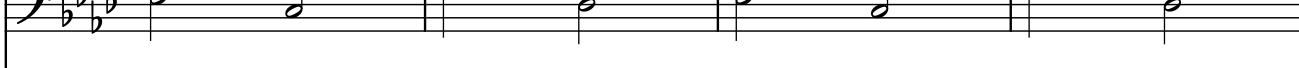
24

Cb.    

Vc.    

Vla.    


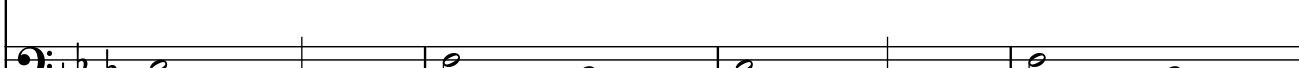
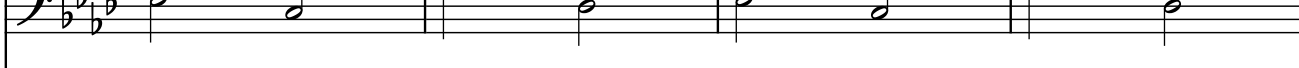

28

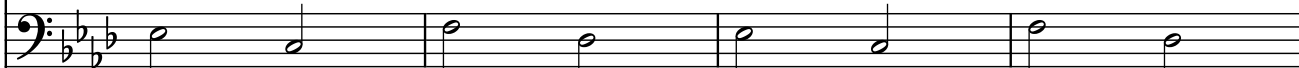



Cb.    



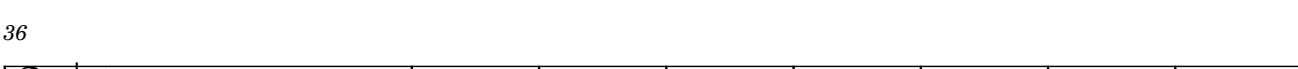
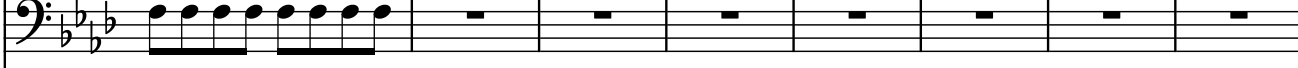
Vc.    

Vla.    

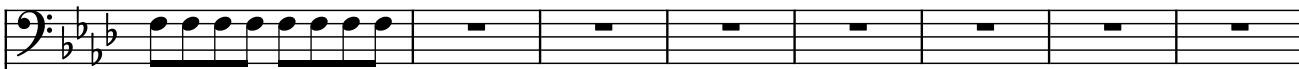
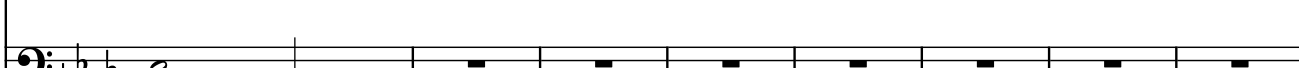
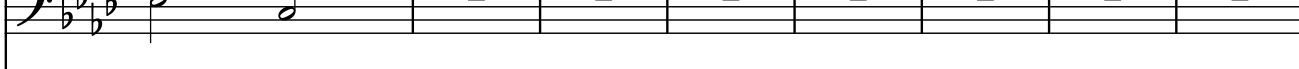
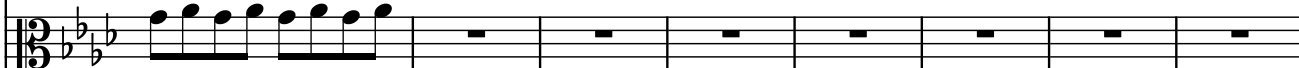
32

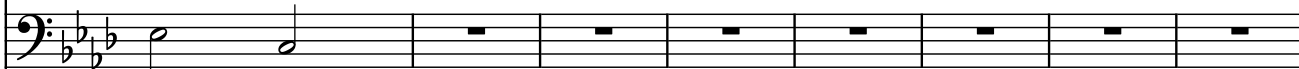
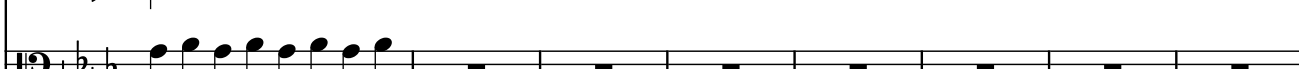
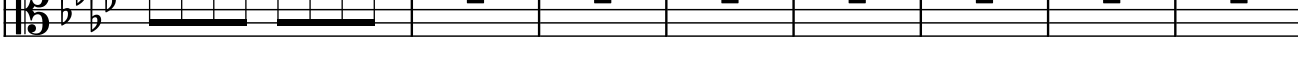

Cb.    

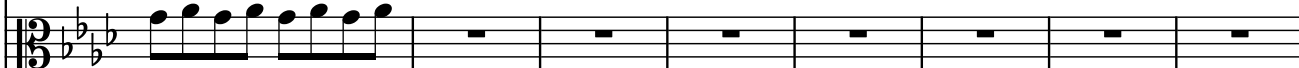
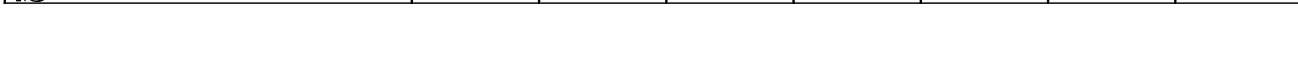


Vc.    

Vla.    

36

Cb.    

Vc.    

Vla.    

44

44

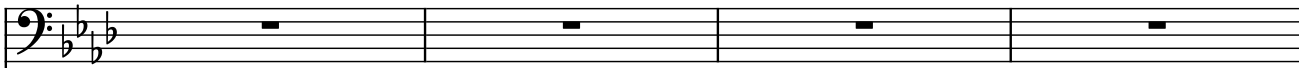
Cb. 

Vc. 

Vla. 

49

49

Cb. 

Vc. 

Vla. 

53

53

Cb. 

Vc. 

Vla. 

57

57

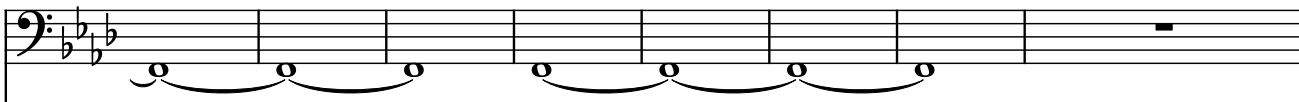
Cb. 

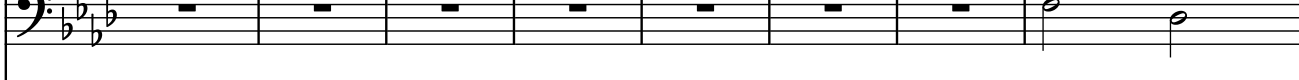
Vc. 

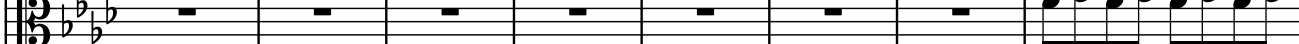
Vla. 

62

62

Cb. 

Vc. 

Vla. 

70

Music score system 1 (Measures 70-73). The system includes three staves: Cb. (Contrabass), Vc. (Violoncello), and Vla. (Violoncello/Viola). The key signature is three flats (B-flat, E-flat, A-flat). The time signature is 12/8. The Cb. staff contains whole rests. The Vc. staff contains a descending eighth-note scale: G2, F2, E2, D2, C2, B1, A1, G1, F1, E1, D1, C1. The Vla. staff contains a descending eighth-note scale: G2, F2, E2, D2, C2, B1, A1, G1, F1, E1, D1, C1.

74

Music score system 2 (Measures 74-77). The system includes three staves: Cb. (Contrabass), Vc. (Violoncello), and Vla. (Violoncello/Viola). The key signature is three flats (B-flat, E-flat, A-flat). The time signature is 12/8. The Cb. staff contains whole rests. The Vc. staff contains a descending eighth-note scale: G2, F2, E2, D2, C2, B1, A1, G1, F1, E1, D1, C1. The Vla. staff contains a descending eighth-note scale: G2, F2, E2, D2, C2, B1, A1, G1, F1, E1, D1, C1.

78

Music score system 3 (Measures 78-82). The system includes three staves: Cb. (Contrabass), Vc. (Violoncello), and Vla. (Violoncello/Viola). The key signature is three flats (B-flat, E-flat, A-flat). The time signature is 12/8. The Cb. staff contains whole rests. The Vc. staff contains a descending eighth-note scale: G2, F2, E2, D2, C2, B1, A1, G1, F1, E1, D1, C1. The Vla. staff contains a descending eighth-note scale: G2, F2, E2, D2, C2, B1, A1, G1, F1, E1, D1, C1.

83

Music score system 4 (Measures 83-86). The system includes three staves: Cb. (Contrabass), Vc. (Violoncello), and Vla. (Violoncello/Viola). The key signature is three flats (B-flat, E-flat, A-flat). The time signature is 12/8. The Cb. staff contains whole rests. The Vc. staff contains a descending eighth-note scale: G2, F2, E2, D2, C2, B1, A1, G1, F1, E1, D1, C1. The Vla. staff contains a descending eighth-note scale: G2, F2, E2, D2, C2, B1, A1, G1, F1, E1, D1, C1.