

Stage 1 & 4

Composer: Kazuhiro Nishida

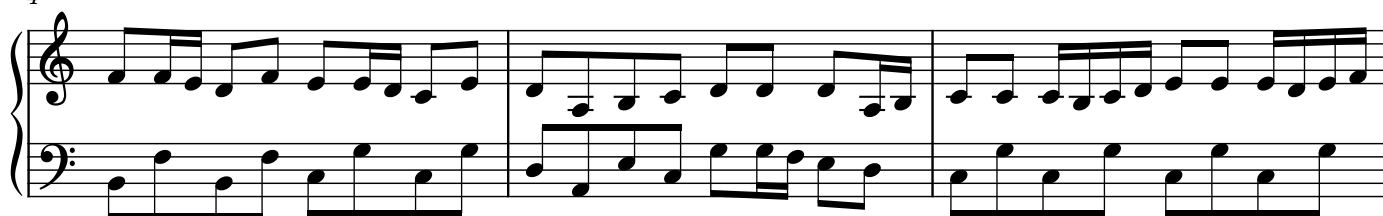
Game: Circus Charlie

pianogame.org

♩ = 120



4



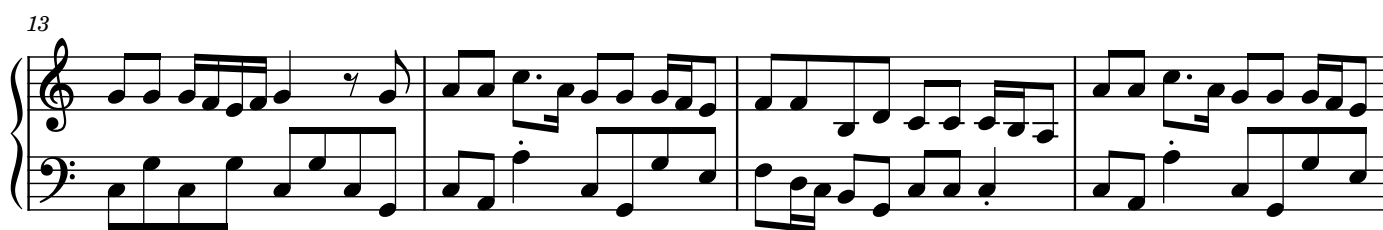
7



10



13



17



20



2

23

Measures 23-25 of a musical score. Measure 23: Treble clef has a half note G4, quarter note A4, eighth note B4, and eighth note A4; Bass clef has a half note F3, quarter note G3, eighth note A3, and eighth note G3. Measure 24: Treble clef has a half note A4, quarter note B4, eighth note C5, and eighth note B4; Bass clef has a half note G3, quarter note A3, eighth note B3, and eighth note A3. Measure 25: Treble clef has a half note B4, quarter note C5, eighth note D5, and eighth note C5, followed by a double bar line; Bass clef has a half note A3, quarter note B3, eighth note C4, and eighth note B3.

26

Measures 26-28 of a musical score. Measure 26: Treble clef has a half note C5, quarter note D5, eighth note E5, and eighth note D5, followed by a sharp sign and a half note; Bass clef has a half note G3, quarter note A3, eighth note B3, and eighth note A3. Measure 27: Treble clef has a half note D5, quarter note E5, eighth note F5, and eighth note E5, followed by a sharp sign and a half note; Bass clef has a half note F3, quarter note G3, eighth note A3, and eighth note F3. Measure 28: Treble clef has a half note E5, quarter note F5, eighth note G5, and eighth note F5, followed by a sharp sign and a half note; Bass clef has a half note E3, quarter note F3, eighth note G3, and eighth note E3.

29

Measures 29-32 of a musical score. Measure 29: Treble clef has a half note F5, quarter note G5, eighth note A5, and eighth note F5, followed by a quarter rest and a half note; Bass clef has a half note D3, quarter note E3, eighth note F3, and eighth note D3. Measure 30: Treble clef has a half note G5, quarter note A5, eighth note B5, and eighth note G5, followed by a quarter rest and a half note; Bass clef has a half note E3, quarter note F3, eighth note G3, and eighth note E3. Measure 31: Treble clef has a half note A5, quarter note B5, eighth note C6, and eighth note A5, followed by a quarter rest and a half note; Bass clef has a half note F3, quarter note G3, eighth note A3, and eighth note F3. Measure 32: Treble clef has a half note B5, quarter note C6, eighth note D6, and eighth note B5, followed by a quarter rest and a half note; Bass clef has a half note G3, quarter note A3, eighth note B3, and eighth note G3.

33

Measures 33-34 of a musical score. Measure 33: Treble clef has a half note C6, quarter note D6, eighth note E6, and eighth note C6, followed by a quarter rest and a half note; Bass clef has a half note A3, quarter note B3, eighth note C4, and eighth note A3. Measure 34: Treble clef has a half note D6, quarter note E6, eighth note F6, and eighth note D6, followed by a quarter rest and a half note; Bass clef has a half note B3, quarter note C4, eighth note D4, and eighth note B3. The system ends with a double bar line.