

A Brave Warrior

Composer: Kouichi Kyuma

Game: Battle of Olympus

pianogame.org

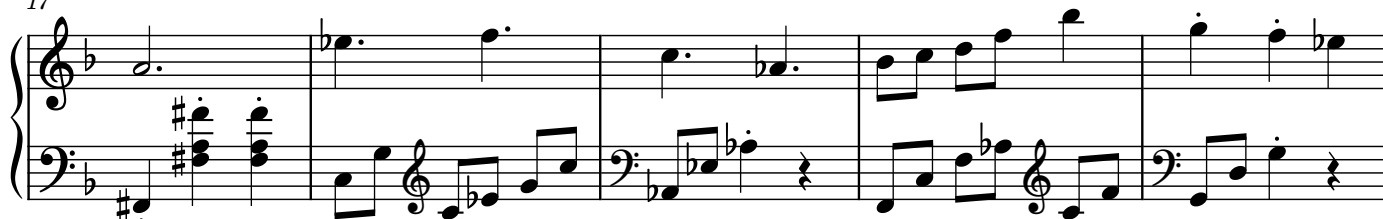
♩ = 150



8



17



22



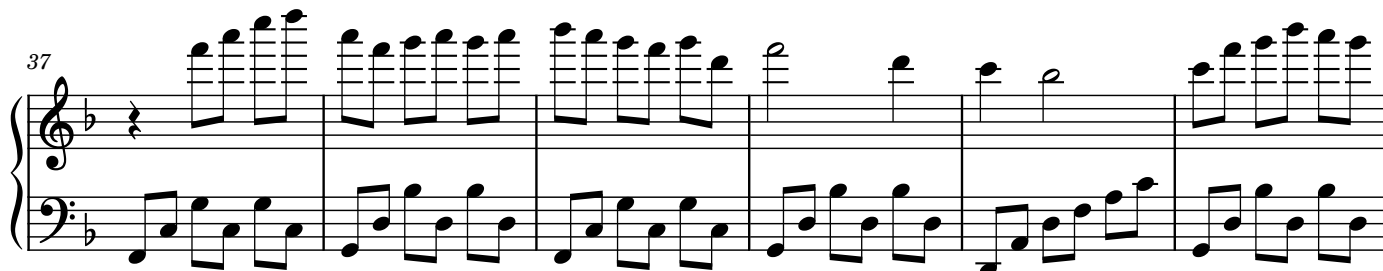
27



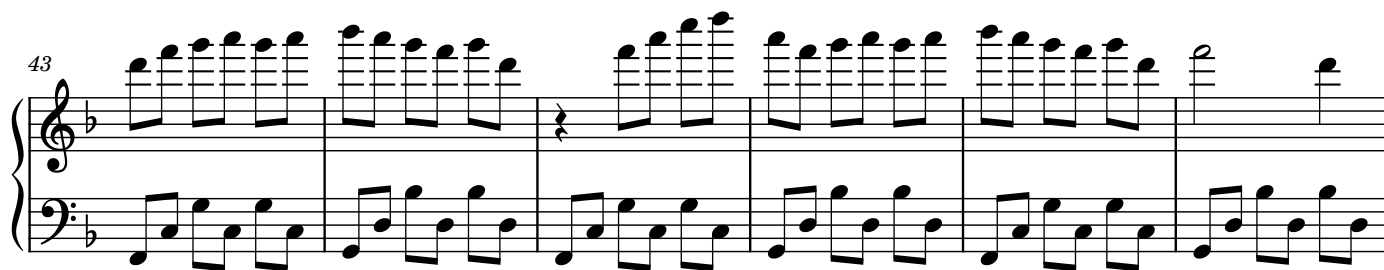
32



37



43



System 43-48: Treble and bass staves. Treble staff has six measures of eighth-note runs. Bass staff has six measures of eighth-note accompaniment.

49



System 49-56: Treble staff has six measures of half notes with accidentals. Bass staff has six measures of eighth-note accompaniment.

57



System 57-65: Treble staff has eight measures of half notes with accidentals. Bass staff has eight measures of eighth-note accompaniment.

66



System 66-70: Treble staff has five measures of half notes with accidentals. Bass staff has five measures of eighth-note accompaniment.

71



System 71-75: Treble staff has five measures of half notes with accidentals. Bass staff has five measures of eighth-note accompaniment.

76



System 76-80: Treble staff has five measures of half notes with accidentals. Bass staff has five measures of eighth-note accompaniment.

81



System 81-85: Treble staff has five measures of half notes with accidentals. Bass staff has five measures of eighth-note accompaniment.

86

Measures 86-90 of a musical score in B-flat major. The right hand features a melody with eighth and quarter notes, while the left hand provides a bass line with eighth and quarter notes. The key signature has two flats (B-flat and E-flat).

91

Measures 91-95 of the musical score. The right hand continues the melodic line, and the left hand maintains the bass line. The key signature remains B-flat major.

96

Measures 96-101 of the musical score. Measures 96-97 show the continuation of the previous pattern. From measure 98, the right hand has a more active melody with slurs, and the left hand features chords and a bass line. The key signature remains B-flat major.

102

Measures 102-109 of the musical score. Measures 102-104 show the continuation of the previous pattern. From measure 105, the right hand has a more active melody with slurs, and the left hand features chords and a bass line. The key signature remains B-flat major.

110

Measures 110-111 of the musical score. Measure 110 shows the continuation of the previous pattern. Measure 111 is a final chord in B-flat major, marked with a double bar line.