

Toxic Seahorse's Stage (7)

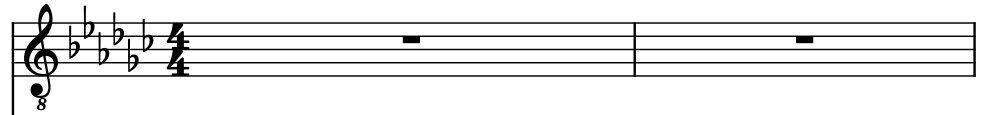
Composer: Kinuyo Yamashita

Game: Mega Man X3

pianogame.org

♩ = 171

Electric Guitar



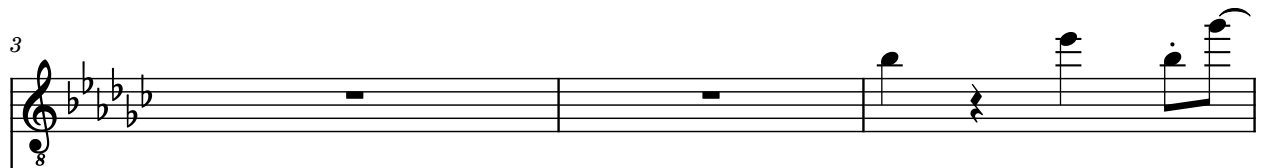
Electric Guitar, Electric Guitar



Bass Guitar, Electric Bass



El. Guit.



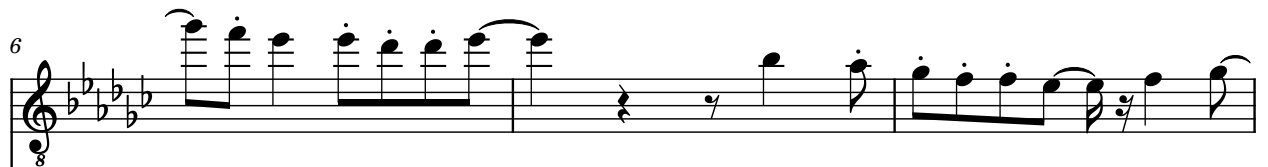
El. Guit.



B. Guit.



El. Guit.



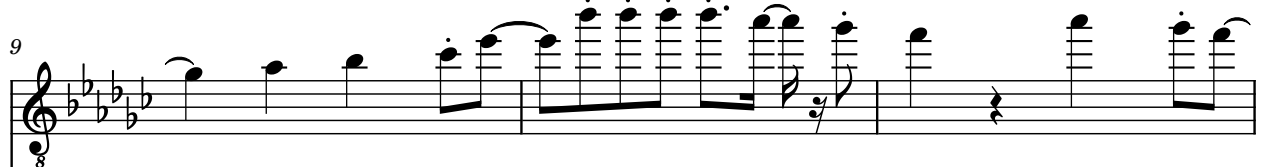
El. Guit.



B. Guit.



El. Guit.



El. Guit.



B. Guit.



12

El. Guit.

El. Guit.

B. Guit.

15

El. Guit.

El. Guit.

B. Guit.

18

El. Guit.

El. Guit.

B. Guit.

21

El. Guit.

El. Guit.

B. Guit.

Detailed description: This musical score is for three guitars: two Electric Guitars (El. Guit.) and one Bass Guitar (B. Guit.). The score is divided into four systems, each containing three staves. The key signature is B-flat major (two flats). The time signature is 8/8. The first system starts at measure 12. The second system starts at measure 15. The third system starts at measure 18. The fourth system starts at measure 21. The El. Guit. parts feature various techniques including triplets, slurs, and ties. The B. Guit. part provides a steady bass line with some syncopation. The notation includes standard musical symbols such as notes, rests, slurs, and triplet markings.

25

El. Guit.

8

3 3 3 3 3 3 3 3

El. Guit.

8

B. Guit.

27

El. Guit.

8

3 3 3 3 3

El. Guit.

8

3 3

B. Guit.

30

El. Guit.

8

3

El. Guit.

8

3

B. Guit.