

# Floating Ruins - "In the Wind" (2)

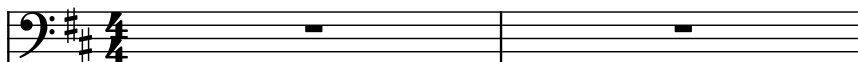
Composer: Ippo Yamada

Game: Mega Man ZX Advent

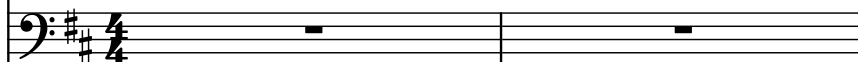
[pianogame.org](http://pianogame.org)

♩ = 135

Bass Guitar, 35 -- Picked Bass



Bass Synthesizer, 40, 16 -- Rubber Bass

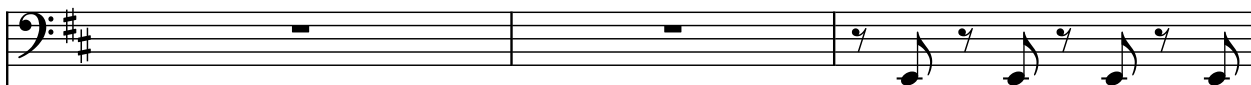


Saw Synthesizer, 82 -- Saw Wave

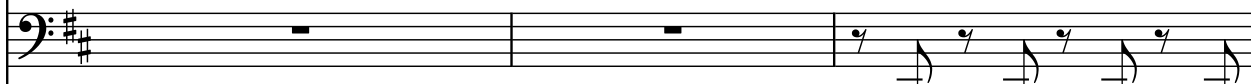


3

B. Guit.



Synth.



Synth.



6

B. Guit.



Synth.



Synth.

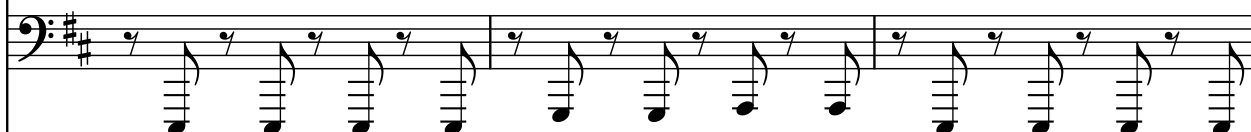


9

B. Guit.



Synth.



Synth.



12

B. Guit.

Synth.

Synth.

Measures 12-14: B. Guit. and Synth. (bass) play eighth notes. Synth. (treble) plays chords.

15

B. Guit.

Synth.

Synth.

Measures 15-17: B. Guit. and Synth. (bass) play eighth notes. Synth. (treble) is silent.

18

B. Guit.

Synth.

Synth.

Measures 18-20: B. Guit. and Synth. (bass) play eighth notes. Synth. (treble) is silent.

21

B. Guit.

Synth.

Synth.

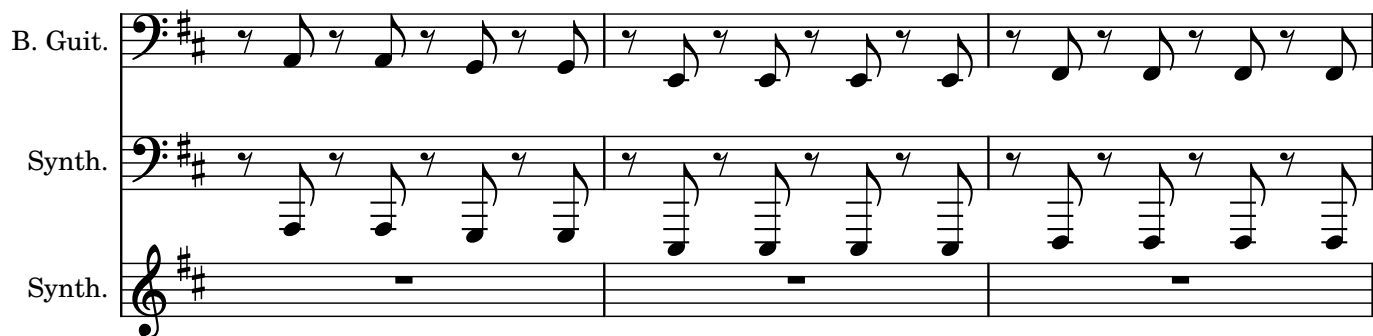
Measures 21-23: B. Guit. and Synth. (bass) play eighth notes. Synth. (treble) is silent.

24

B. Guit.

Synth.

Synth.

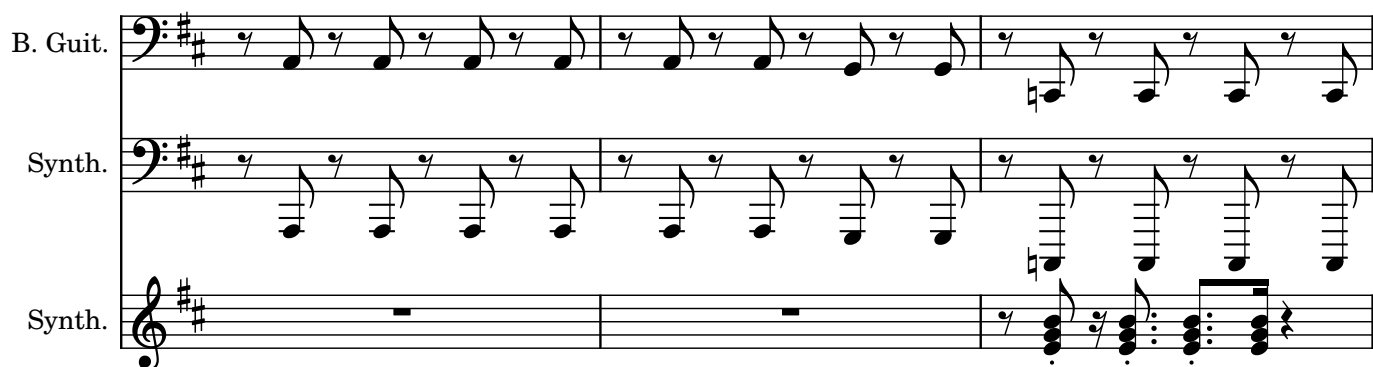


27

B. Guit.

Synth.

Synth.



30

B. Guit.

Synth.

Synth.

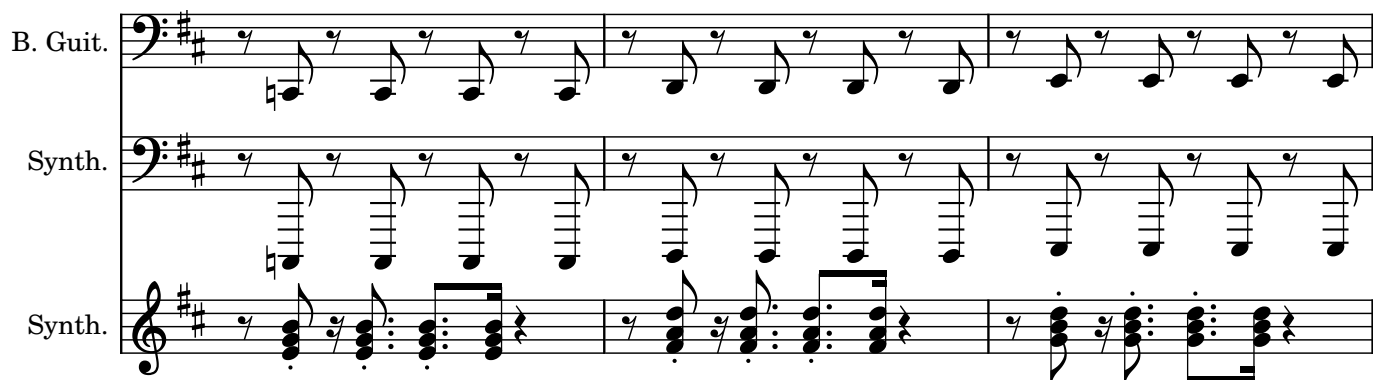


33

B. Guit.

Synth.

Synth.



36

B. Guit.

Synth.

Synth.

Measures 36-38: B. Guit. and Synth. (bass) play eighth notes. Synth. (treble) plays chords.

39

B. Guit.

Synth.

Synth.

Measures 39-41: B. Guit. and Synth. (bass) play eighth notes. Synth. (treble) plays chords.

42

B. Guit.

Synth.

Synth.

Measures 42-44: B. Guit. and Synth. (bass) play eighth notes. Synth. (treble) plays chords.

45

B. Guit.

Synth.

Synth.

Measures 45-48: B. Guit. and Synth. (bass) are silent. Synth. (treble) plays chords.

49

B. Guit.

Synth.

Synth.

52

B. Guit.

Synth.

Synth.

55

B. Guit.

Synth.

Synth.

58

B. Guit.

Synth.

Synth.

61

B. Guit.

Synth.

Synth.

64

B. Guit.

Synth.

Synth.

67

B. Guit.

Synth.

Synth.

70

B. Guit.

Synth.

Synth.

73

B. Guit.

Synth.

Synth.

Measures 73-75: B. Guit. (Bass clef, 2 sharps) plays eighth notes. Synth. (Bass clef, 2 sharps) plays eighth notes. Synth. (Treble clef, 2 sharps) plays chords.

76

B. Guit.

Synth.

Synth.

Measures 76-78: B. Guit. (Bass clef, 2 sharps) plays eighth notes. Synth. (Bass clef, 2 sharps) plays eighth notes. Synth. (Treble clef, 2 sharps) plays chords.

79

B. Guit.

Synth.

Synth.

Measures 79-81: B. Guit. (Bass clef, 2 sharps) plays eighth notes. Synth. (Bass clef, 2 sharps) plays eighth notes. Synth. (Treble clef, 2 sharps) plays chords.

82

B. Guit.

Synth.

Synth.

Measures 82-84: B. Guit. (Bass clef, 2 sharps) plays eighth notes. Synth. (Bass clef, 2 sharps) plays eighth notes. Synth. (Treble clef, 2 sharps) plays chords.



85

B. Guit.

Synth.

Synth.

Measures 85-87. B. Guit. (Bass Guitar) plays a continuous eighth-note line in the bass clef. Synth. (Synthesizer) has two staves: the bottom staff continues the eighth-note line, and the top staff plays a chordal accompaniment of eighth notes.

88

B. Guit.

Synth.

Synth.

Measures 88-90. B. Guit. (Bass Guitar) plays eighth notes in measure 88, then rests in measures 89 and 90. Synth. (Synthesizer) has two staves: the bottom staff continues the eighth-note line, and the top staff plays a chordal accompaniment of eighth notes.

91

B. Guit.

Synth.

Synth.

Measures 91-93. B. Guit. (Bass Guitar) rests in measures 91 and 92, then plays eighth notes in measure 93. Synth. (Synthesizer) has two staves: the bottom staff continues the eighth-note line, and the top staff plays a chordal accompaniment of eighth notes.

94

B. Guit.

Synth.

Synth.

Measures 94-96. B. Guit. (Bass Guitar) plays a continuous eighth-note line in the bass clef. Synth. (Synthesizer) has two staves: the bottom staff continues the eighth-note line, and the top staff plays a chordal accompaniment of eighth notes.

97

B. Guit.

Synth.

Synth.

Measures 97-99. The B. Guit. part is in bass clef with a key signature of two sharps (F# and C#), playing a rhythmic pattern of eighth notes. The Synth. part (bottom) is in bass clef, playing a similar eighth-note pattern. The Synth. part (top) is in treble clef, playing a pattern of chords and eighth notes.

100

B. Guit.

Synth.

Synth.

Measures 100-102. The B. Guit. part is in bass clef with a key signature of two sharps (F# and C#), playing a rhythmic pattern of eighth notes. The Synth. part (bottom) is in bass clef, playing a similar eighth-note pattern. The Synth. part (top) is in treble clef, playing a pattern of chords and eighth notes.