

Dark Castle (Violin Remix)

Composer: Jun Ishikawa

Game: Kirby's Dream Land 2

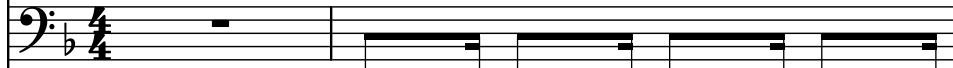
pianogame.org

♩ = 184

Harmonica, CH #1



Bass Hohner Harmonica, CH #2



Harmonica, CH #3



3

Bs. Harm.



5

Bs. Harm.



7

Bs. Harm.



9

Bs. Harm.



11

Bs. Harm.

13

Bs. Harm.

15

Bs. Harm.

17

Bs. Harm.

19

Bs. Harm.

21

Bs. Harm.

23

Bs. Harm.

25

Bs. Harm.

27

Bs. Harm.

29

Bs. Harm.

31

Bs. Harm.

33

Bs. Harm.

35

Bs. Harm.

37

Bs. Harm.

39

Bs. Harm.

Measures 39-40 of the musical score. The top staff (treble clef) contains a melody in B-flat major. Measure 39: G4, A4, Bb4, C5. Measure 40: D5 (half note), E5 (quarter note), F5 (quarter note), G5 (half note). The bottom two staves (bass and treble clefs) contain a complex accompaniment with many beamed sixteenth notes. The label 'Bs. Harm.' is to the left of the bottom staves.

41

Bs. Harm.

Measures 41-42 of the musical score. The top staff (treble clef) contains a melody in B-flat major. Measure 41: G4 (half note), A4 (quarter note), Bb4 (quarter note), C5 (quarter note). Measure 42: D5 (quarter note), E5 (quarter note), F5 (quarter note), G5 (half note). The bottom two staves (bass and treble clefs) contain a complex accompaniment with many beamed sixteenth notes. The label 'Bs. Harm.' is to the left of the bottom staves.

43

Bs. Harm.

Measures 43-44 of the musical score. The top staff (treble clef) contains a melody in B-flat major. Measure 43: G4, A4, Bb4, C5. Measure 44: D5 (half note), E5 (quarter note), F5 (quarter note), G5 (half note). The bottom two staves (bass and treble clefs) contain a complex accompaniment with many beamed sixteenth notes. The label 'Bs. Harm.' is to the left of the bottom staves.

45

Bs. Harm.

Measures 45-46 of the musical score. The top staff (treble clef) contains a melody in B-flat major. Measure 45: G4 (half note), A4 (quarter note), Bb4 (quarter note), C5 (quarter note). Measure 46: D5 (quarter note), E5 (quarter note), F5 (quarter note), G5 (half note). The bottom two staves (bass and treble clefs) contain a complex accompaniment with many beamed sixteenth notes. The label 'Bs. Harm.' is to the left of the bottom staves.

47

Measures 47-48 of a musical score. The top staff is a single melodic line in treble clef, key of B-flat major. Measure 47 contains a half note B-flat, a half note C, a half note D, and a half note E. Measure 48 contains a half note F, a half note G, a half note A, and a half note B-flat, which is tied to the next measure. The bottom system is labeled "Bs. Harm." and consists of two staves. The middle staff is in bass clef and contains a continuous eighth-note accompaniment of B-flat, C, D, E, F, G, A, B-flat. The bottom staff is in treble clef and contains a continuous eighth-note accompaniment of B-flat, C, D, E, F, G, A, B-flat.

49

Measures 49-50 of a musical score. The top staff is a single melodic line in treble clef, key of B-flat major. Measure 49 contains a half note B-flat, a half note C, a half note D, and a half note E. Measure 50 contains a half note F, a half note G, a half note A, and a half note B-flat, which is tied to the next measure. The bottom system is labeled "Bs. Harm." and consists of two staves. The middle staff is in bass clef and contains a continuous eighth-note accompaniment of B-flat, C, D, E, F, G, A, B-flat. The bottom staff is in treble clef and contains a continuous eighth-note accompaniment of B-flat, C, D, E, F, G, A, B-flat.

51

Measures 51-52 of a musical score. The top staff is a single melodic line in treble clef, key of B-flat major. Measure 51 contains a half note B-flat, a half note C, a half note D, and a half note E. Measure 52 contains a half note F, a half note G, a half note A, and a half note B-flat, which is tied to the next measure. The bottom system is labeled "Bs. Harm." and consists of two staves. The middle staff is in bass clef and contains a continuous eighth-note accompaniment of B-flat, C, D, E, F, G, A, B-flat. The bottom staff is in treble clef and contains a continuous eighth-note accompaniment of B-flat, C, D, E, F, G, A, B-flat.

53

Measures 53-54 of a musical score. The top staff is a single melodic line in treble clef, key of B-flat major. Measure 53 contains a half note B-flat, a half note C, a half note D, and a half note E. Measure 54 contains a half note F, a half note G, a half note A, and a half note B-flat, which is tied to the next measure. The bottom system is labeled "Bs. Harm." and consists of two staves. The middle staff is in bass clef and contains a continuous eighth-note accompaniment of B-flat, C, D, E, F, G, A, B-flat. The bottom staff is in treble clef and contains a continuous eighth-note accompaniment of B-flat, C, D, E, F, G, A, B-flat.

55

Measures 55-56 of a musical score. The top staff (treble clef) contains a melody with eighth and quarter notes. The middle staff (bass clef) is labeled "Bs. Harm." and contains a bass line with eighth and quarter notes. The bottom staff (treble clef) contains a piano accompaniment with eighth and quarter notes.

57

Measures 57-58 of a musical score. The top staff (treble clef) contains a melody with eighth and quarter notes. The middle staff (bass clef) is labeled "Bs. Harm." and contains a bass line with eighth and quarter notes. The bottom staff (treble clef) contains a piano accompaniment with eighth and quarter notes.

59

Measures 59-60 of a musical score. The top staff (treble clef) contains a melody with eighth and quarter notes. The middle staff (bass clef) is labeled "Bs. Harm." and contains a bass line with eighth and quarter notes. The bottom staff (treble clef) contains a piano accompaniment with eighth and quarter notes.

61

Measures 61-62 of a musical score. The top staff (treble clef) contains a melody with eighth and quarter notes. The middle staff (bass clef) is labeled "Bs. Harm." and contains a bass line with eighth and quarter notes. The bottom staff (treble clef) contains a piano accompaniment with eighth and quarter notes.

63

Measures 63-64 of a musical score. The top staff (treble clef) contains a melody with eighth and quarter notes. The middle staff (bass clef) is labeled "Bs. Harm." and contains a bass line with eighth and quarter notes. The bottom staff (treble clef) contains a piano accompaniment with eighth and quarter notes.

65

65

Bs. Harm.

This system contains measures 65 and 66. The top staff is a single melodic line in treble clef, starting with a quarter rest, followed by eighth notes G4, A4, Bb4, and a half note C5. The bottom staff is a piano accompaniment in bass and treble clefs, featuring a steady eighth-note pattern in the bass and a similar pattern in the treble, mostly consisting of eighth and sixteenth notes.

67

67

Bs. Harm.

This system contains measures 67 and 68. The top staff continues the melodic line from measure 66, with a half note C5, a quarter note D5, and a half note E5. The piano accompaniment continues with the same eighth-note texture.

69

69

Bs. Harm.

This system contains measures 69 and 70. The top staff has a half note C5, a quarter note D5, and a half note E5. The piano accompaniment continues with the same eighth-note texture.

71

71

Bs. Harm.

This system contains measures 71 and 72. The top staff has a quarter rest, followed by eighth notes G4, A4, Bb4, and a half note C5. The piano accompaniment continues with the same eighth-note texture.

73

73

Bs. Harm.

This system contains measures 73 and 74. The top staff has a quarter rest, followed by eighth notes G4, A4, Bb4, and a half note C5. The piano accompaniment continues with the same eighth-note texture.

75

Measures 75-76. The system consists of three staves. The top staff is a single melodic line in treble clef. The bottom two staves are labeled 'Bs. Harm.' and consist of a bass staff and a piano staff, both in treble clef. The key signature has one flat (B-flat). Measure 75 features a melodic phrase in the top staff and a rhythmic accompaniment in the bottom staves. Measure 76 continues the melodic and harmonic progression.

77

Measures 77-78. The system consists of three staves. The top staff is a single melodic line in treble clef. The bottom two staves are labeled 'Bs. Harm.' and consist of a bass staff and a piano staff, both in treble clef. The key signature has one flat (B-flat). Measure 77 features a melodic phrase in the top staff and a rhythmic accompaniment in the bottom staves. Measure 78 continues the melodic and harmonic progression.

79

Measures 79-80. The system consists of three staves. The top staff is a single melodic line in treble clef. The bottom two staves are labeled 'Bs. Harm.' and consist of a bass staff and a piano staff, both in treble clef. The key signature has one flat (B-flat). Measure 79 features a melodic phrase in the top staff and a rhythmic accompaniment in the bottom staves. Measure 80 continues the melodic and harmonic progression.

81

Measures 81-82. The system consists of three staves. The top staff is a single melodic line in treble clef. The bottom two staves are labeled 'Bs. Harm.' and consist of a bass staff and a piano staff, both in treble clef. The key signature has one flat (B-flat). Measure 81 features a melodic phrase in the top staff and a rhythmic accompaniment in the bottom staves. Measure 82 continues the melodic and harmonic progression.

83

Measures 83-84. The system consists of three staves. The top staff is a single melodic line in treble clef. The bottom two staves are labeled 'Bs. Harm.' and consist of a bass staff and a piano staff, both in treble clef. The key signature has one flat (B-flat). Measure 83 features a melodic phrase in the top staff and a rhythmic accompaniment in the bottom staves. Measure 84 continues the melodic and harmonic progression.

85

Bs. Harm.

This system contains measures 85 and 86. Measure 85 features a treble staff with a whole rest followed by a half note G4, and a bass staff with a continuous eighth-note accompaniment. Measure 86 has a treble staff with a half note G4, a quarter rest, a half note F#4, and a half note E4. The bass staff continues the eighth-note accompaniment. A triplet of eighth notes (G4, A4, B4) is marked in the bass staff of measure 86.

87

Bs. Harm.

This system contains measures 87 and 88. Measure 87 has a treble staff with a half note G4, a half note F#4, and a half note E4. The bass staff continues the eighth-note accompaniment. Measure 88 has a treble staff with a half note G4, a half note F#4, and a half note E4. The bass staff continues the eighth-note accompaniment.

89

Bs. Harm.

This system contains measures 89 and 90. Measure 89 features a treble staff with a whole rest followed by a half note G4, and a bass staff with a continuous eighth-note accompaniment. Measure 90 has a treble staff with a half note G4, a quarter rest, a half note F#4, and a half note E4. The bass staff continues the eighth-note accompaniment. Two triplet markings are present in the bass staff of measure 90.

91

Bs. Harm.

This system contains measures 91 and 92. Measure 91 has a treble staff with a half note G4, a half note F#4, and a half note E4. The bass staff continues the eighth-note accompaniment. Measure 92 has a treble staff with a half note G4, a half note F#4, and a half note E4. The bass staff continues the eighth-note accompaniment.

93

Bs. Harm.

Measures 93-94 of a musical score. The system consists of three staves: a single treble staff at the top, and a grand staff (bass and treble) below it. The key signature has one flat (B-flat). Measure 93: Treble staff has a half note B-flat. Grand staff has a triplet of eighth notes (F, A, B) in the bass staff and a triplet of eighth notes (F, A, B) in the treble staff. Measure 94: Treble staff has a half note B-flat. Grand staff has a triplet of eighth notes (F, A, B) in the bass staff and a triplet of eighth notes (F, A, B) in the treble staff.

95

Bs. Harm.

Measures 95-96 of a musical score. The system consists of three staves: a single treble staff at the top, and a grand staff (bass and treble) below it. The key signature has one flat (B-flat). Measure 95: Treble staff has a half note B-flat. Grand staff has a triplet of eighth notes (F, A, B) in the bass staff and a triplet of eighth notes (F, A, B) in the treble staff. Measure 96: Treble staff has a half note B-flat. Grand staff has a triplet of eighth notes (F, A, B) in the bass staff and a triplet of eighth notes (F, A, B) in the treble staff.

97

Bs. Harm.

Measures 97-98 of a musical score. The system consists of three staves: a single treble staff at the top, and a grand staff (bass and treble) below it. The key signature has one flat (B-flat). Measure 97: Treble staff has a half note B-flat. Grand staff has a triplet of eighth notes (F, A, B) in the bass staff and a triplet of eighth notes (F, A, B) in the treble staff. Measure 98: Treble staff has a half note B-flat. Grand staff has a triplet of eighth notes (F, A, B) in the bass staff and a triplet of eighth notes (F, A, B) in the treble staff.

99

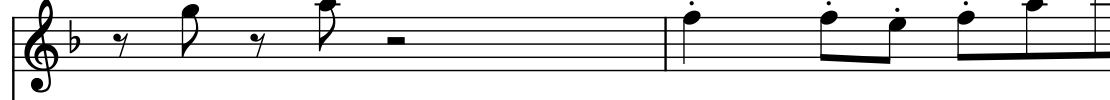
Bs. Harm.

Measures 99-100 of a musical score. The system consists of three staves: a single treble staff at the top, and a grand staff (bass and treble) below it. The key signature has one flat (B-flat). Measure 99: Treble staff has a half note B-flat. Grand staff has a triplet of eighth notes (F, A, B) in the bass staff and a triplet of eighth notes (F, A, B) in the treble staff. Measure 100: Treble staff has a half note B-flat. Grand staff has a triplet of eighth notes (F, A, B) in the bass staff and a triplet of eighth notes (F, A, B) in the treble staff.

101

Bs. Harm.

103



Bs. Harm.

105

Bs. Harm.

107

Bs. Harm.