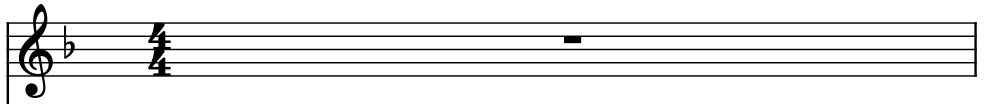


# Stage 1

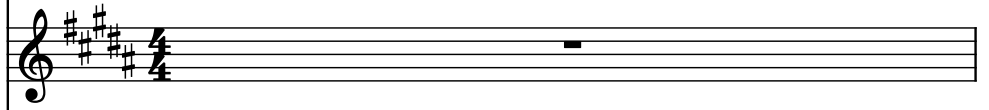
Composer: Namco  
Game: Lucky & Wild  
[pianogame.org](http://pianogame.org)

♩ = 110

Brass, "Stage 1 and 4"



Alto Saxophone, Lucky & Wild

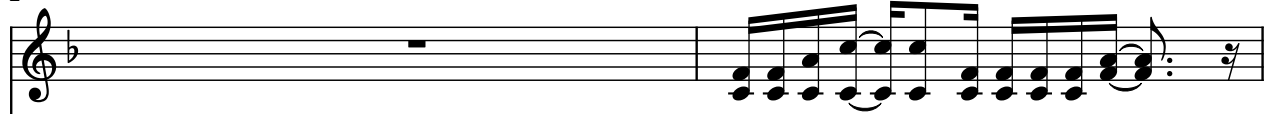


Bass Guitar, For Arcade

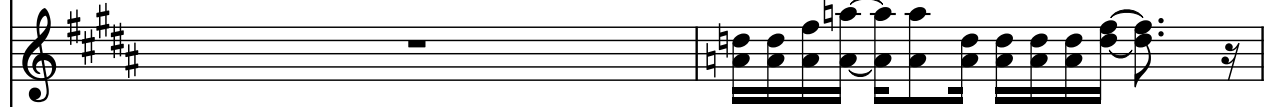


2

Br.



A. Sax.



B. Guit.



4

Br.



A. Sax.



B. Guit.



6

Br.



A. Sax.



B. Guit.



8

Br.

A. Sax.

B. Guit.

Measures 8-9. The Br. part features a melodic line with eighth notes and a repeat sign. The A. Sax. part has a complex harmonic line with many accidentals. The B. Guit. part has a steady eighth-note bass line.

10

Br.

A. Sax.

B. Guit.

Measures 10-11. The Br. part continues the melodic line. The A. Sax. part has a complex harmonic line. The B. Guit. part continues the eighth-note bass line.

12

Br.

A. Sax.

B. Guit.

Measures 12-13. The Br. part has a melodic line with a repeat sign. The A. Sax. part has a complex harmonic line. The B. Guit. part continues the eighth-note bass line.

14

Br.

A. Sax.

B. Guit.

Measures 14-15. The Br. part continues the melodic line. The A. Sax. part has a complex harmonic line. The B. Guit. part continues the eighth-note bass line.

16

Br.

A. Sax.

B. Guit.

Measures 16-17. The Br. part has a melodic line with a repeat sign. The A. Sax. part has a complex harmonic line. The B. Guit. part continues the eighth-note bass line.

18

Br.

A. Sax.

B. Guit.

Measures 18-19. The Br. part features a melodic line with eighth and sixteenth notes. The A. Sax. part has a complex texture with many beamed notes and some accidentals. The B. Guit. part provides a steady bass line with eighth notes.

20

Br.

A. Sax.

B. Guit.

Measures 20-21. The Br. part continues its melodic line. The A. Sax. part has a similar complex texture. The B. Guit. part continues its steady bass line.

22

Br.

A. Sax.

B. Guit.

Measures 22-23. The Br. part continues its melodic line. The A. Sax. part has a similar complex texture. The B. Guit. part continues its steady bass line.

24

Br.

A. Sax.

B. Guit.

Measures 24-25. The Br. part continues its melodic line. The A. Sax. part has a similar complex texture. The B. Guit. part continues its steady bass line.

26

Br.

A. Sax.

B. Guit.

Measure 26: Br. (F4, A4, C5), A. Sax. (F#4, A#4, C#5), B. Guit. (F2, A2, C3, E3, G3, B2, D3, F3, A3, C4, E4, G4, B4, F#5, A#5, C#6).

Measure 27: Br. (F4, A4, C5), A. Sax. (F#4, A#4, C#5), B. Guit. (F2, A2, C3, E3, G3, B2, D3, F3, A3, C4, E4, G4, B4, F#5, A#5, C#6).

28

Br.

A. Sax.

B. Guit.

Measure 28: Br. (F4, A4, C5), A. Sax. (F#4, A#4, C#5), B. Guit. (F2, A2, C3, E3, G3, B2, D3, F3, A3, C4, E4, G4, B4, F#5, A#5, C#6).

Measure 29: Br. (F4, A4, C5), A. Sax. (F#4, A#4, C#5), B. Guit. (F2, A2, C3, E3, G3, B2, D3, F3, A3, C4, E4, G4, B4, F#5, A#5, C#6).

30

Br.

A. Sax.

B. Guit.

Measure 30: Br. (F4, A4, C5), A. Sax. (F#4, A#4, C#5), B. Guit. (F2, A2, C3, E3, G3, B2, D3, F3, A3, C4, E4, G4, B4, F#5, A#5, C#6).

Measure 31: Br. (F4, A4, C5), A. Sax. (F#4, A#4, C#5), B. Guit. (F2, A2, C3, E3, G3, B2, D3, F3, A3, C4, E4, G4, B4, F#5, A#5, C#6).

32

Br.

A. Sax.

B. Guit.

Measure 32: Br. (F4, A4, C5), A. Sax. (F#4, A#4, C#5), B. Guit. (F2, A2, C3, E3, G3, B2, D3, F3, A3, C4, E4, G4, B4, F#5, A#5, C#6).

Measure 33: Br. (F4, A4, C5), A. Sax. (F#4, A#4, C#5), B. Guit. (F2, A2, C3, E3, G3, B2, D3, F3, A3, C4, E4, G4, B4, F#5, A#5, C#6).

34

Br.

A. Sax.

B. Guit.

Measure 34: Br. (F4, A4, C5), A. Sax. (F#4, A#4, C#5), B. Guit. (F2, A2, C3, E3, G3, B2, D3, F3, A3, C4, E4, G4, B4, F#5, A#5, C#6).

Measure 35: Br. (F4, A4, C5), A. Sax. (F#4, A#4, C#5), B. Guit. (F2, A2, C3, E3, G3, B2, D3, F3, A3, C4, E4, G4, B4, F#5, A#5, C#6).

36

Br.

A. Sax.

B. Guit.

Measures 36-37. The Br. part features a melodic line with eighth and sixteenth notes. The A. Sax. part has a similar melodic line with some accidentals. The B. Guit. part has a steady eighth-note bass line.

38

Br.

A. Sax.

B. Guit.

Measures 38-39. The Br. part continues the melodic line. The A. Sax. part has a similar melodic line with some accidentals. The B. Guit. part has a steady eighth-note bass line.

40

Br.

A. Sax.

B. Guit.

Measures 40-41. The Br. part has a melodic line with some rests. The A. Sax. part has a similar melodic line with some accidentals. The B. Guit. part has a steady eighth-note bass line.

42

Br.

A. Sax.

B. Guit.

Measures 42-43. The Br. part has a melodic line with some rests. The A. Sax. part has a similar melodic line with some accidentals. The B. Guit. part has a steady eighth-note bass line.

44

Br.

A. Sax.

B. Guit.

46

Br.

A. Sax.

B. Guit.

48

Br.

A. Sax.

B. Guit.

50

Br.

A. Sax.

B. Guit.

52

Br.

A. Sax.

B. Guit.

52

54

Br.

A. Sax.

B. Guit.

54

56

Br.

A. Sax.

B. Guit.

56

58

Br.

A. Sax.

B. Guit.

58

60

Br.

A. Sax.

B. Guit.

60



62

Br.

A. Sax.

B. Guit.

This musical score page contains measures 62, 63, and 64. The Br. staff (top) is in G major (one sharp) and features a melodic line with eighth and sixteenth notes, ending with a quarter rest. The A. Sax. staff (middle) is in E major (four sharps) and features a melodic line with eighth and sixteenth notes, ending with a quarter rest. The B. Guit. staff (bottom) is in G major (one sharp) and features a bass line with eighth and sixteenth notes, ending with a quarter rest. The key signature for the Br. and B. Guit. staves is G major (one sharp), while the A. Sax. staff is in E major (four sharps). The time signature is not explicitly shown but appears to be 4/4 based on the note values.