

In-Game Music

Composer: Curtis Schweitzer

Game: Crossfire

pianogame.org

♩ = 136

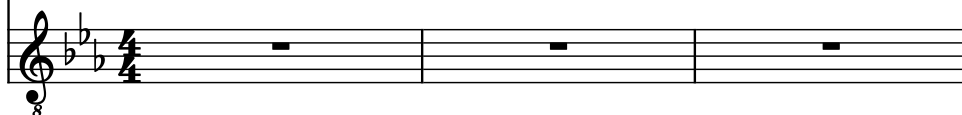
Brass Synthesizer, Brass



Bass Synthesizer, Electric Bass



Electric Guitar, Electric Guitar



4

Synth.



Synth.



El. Guit.



8

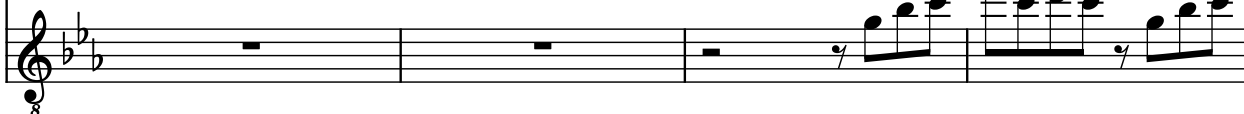
Synth.



Synth.

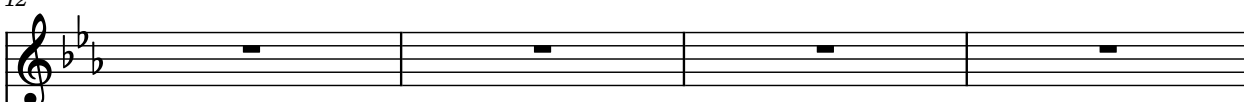


El. Guit.



12

Synth.



Synth.



El. Guit.



16

Synth.

Synth.

El. Guit.

g

20

Synth.

Synth.

El. Guit.

g

24

Synth.

Synth.

El. Guit.

g

28

Synth.

Synth.

El. Guit.

g

32

Synth.

Synth.

El. Guit.

36

Synth.

Synth.

El. Guit.

40

Synth.

Synth.

El. Guit.

44

Synth.

Synth.

El. Guit.

48

Synth.

Synth.

El. Guit.

g

52

Synth.

Synth.

El. Guit.

56

Synth.

Synth.

El. Guit.

60

Synth.

Synth.

El. Guit.

64

Synth.

Synth.

El. Guit.

This system contains measures 64 through 67. It features three staves: Synth. (top), Synth. (middle), and El. Guit. (bottom). The key signature is B-flat major (two flats). The Synth. staves use treble and bass clefs respectively. The El. Guit. staff uses a treble clef with an 8va pedal point indicated by an '8' below the staff. The music consists of eighth-note patterns in the synth parts and a more complex eighth-note melody in the guitar part.

68

Synth.

Synth.

El. Guit.

This system contains measures 68 through 71. It features three staves: Synth. (top), Synth. (middle), and El. Guit. (bottom). The key signature is B-flat major (two flats). The Synth. staves use treble and bass clefs respectively. The El. Guit. staff uses a treble clef with an 8va pedal point indicated by an '8' below the staff. The music continues with eighth-note patterns in the synth parts and a melody in the guitar part, ending with a double bar line in measure 71.