

Stage 5 - "Snowfield" (XG)

Composer: Kazuki Muraoka

Game: Contra

pianogame.org

♩ = 140

Contrabass, Acoustic Bass

Alto Recorder, Recorder

Percussive Organ, Percussive Organ

Musical notation for the first system, measures 1-2. The Contrabass, Acoustic Bass part (bass clef) plays a continuous eighth-note pattern in B-flat major. The Alto Recorder, Recorder and Percussive Organ, Percussive Organ parts (treble clef) are silent, indicated by whole rests.

3

Cb.

A. Rec.

Perc. Org.

Musical notation for the second system, measures 3-5. The Contrabass, Acoustic Bass part continues its eighth-note pattern. The Alto Recorder, Recorder part enters in measure 3 with a half-note chord (B-flat and D-flat) and a half-note chord (E-flat and G-flat) in measure 4. The Percussive Organ, Percussive Organ part remains silent.

6

Cb.

A. Rec.

Perc. Org.

Musical notation for the third system, measures 6-8. The Contrabass, Acoustic Bass part continues its eighth-note pattern. The Alto Recorder, Recorder part continues its half-note chords. The Percussive Organ, Percussive Organ part remains silent.

9

Cb.

A. Rec.

Perc. Org.

Musical notation for the fourth system, measures 9-11. The Contrabass, Acoustic Bass part continues its eighth-note pattern. The Alto Recorder, Recorder part continues its half-note chords. The Percussive Organ, Percussive Organ part remains silent.

12

Cb.

A. Rec.

Perc. Org.

Musical notation for the fifth system, measures 12-14. The Contrabass, Acoustic Bass part continues its eighth-note pattern. The Alto Recorder, Recorder part continues its half-note chords. The Percussive Organ, Percussive Organ part remains silent.

15

Cb.

A. Rec.

Perc. Org.

Measures 15-17. Cb. (Contrabass) plays a steady eighth-note pattern. A. Rec. (Automatic Recorder) plays a complex eighth-note pattern with slurs and ties. Perc. Org. (Percussion Organ) has rests in measures 15 and 16, then enters in measure 17 with a series of chords.

18

Cb.

A. Rec.

Perc. Org.

Measures 18-20. Cb. continues the eighth-note pattern. A. Rec. has a rest in measure 18, then enters in measure 19 with a complex eighth-note pattern. Perc. Org. enters in measure 18 with a series of chords and continues through measure 20.

21

Cb.

A. Rec.

Perc. Org.

Measures 21-23. Cb. continues the eighth-note pattern. A. Rec. has rests in measures 21 and 22, then enters in measure 23 with a complex eighth-note pattern. Perc. Org. continues the chordal pattern from the previous system.

24

Cb.

A. Rec.

Perc. Org.

Measures 24-26. Cb. continues the eighth-note pattern. A. Rec. enters in measure 24 with a complex eighth-note pattern. Perc. Org. has rests in measures 24 and 25, then enters in measure 26 with a series of chords.

27

Cb.

A. Rec.

Perc. Org.

Measures 27-29: Cb. (Bass) plays a continuous eighth-note pattern. A. Rec. (Alto) plays a series of chords and eighth notes. Perc. Org. (Percussion/Organ) is silent.

30

Cb.

A. Rec.

Perc. Org.

Measures 30-32: Cb. (Bass) continues the eighth-note pattern. A. Rec. (Alto) continues with chords and eighth notes. Perc. Org. (Percussion/Organ) is silent.

33

Cb.

A. Rec.

Perc. Org.

Measures 33-35: Cb. (Bass) continues the eighth-note pattern. A. Rec. (Alto) continues with chords and eighth notes. Perc. Org. (Percussion/Organ) is silent.

36

Cb.

A. Rec.

Perc. Org.

Measures 36-38: Cb. (Bass) continues the eighth-note pattern. A. Rec. (Alto) continues with chords and eighth notes. Perc. Org. (Percussion/Organ) is silent.

39

Cb.

A. Rec.

Perc. Org.

Measures 39-41. Cb. (Contrabass) plays a steady eighth-note pattern. A. Rec. (Automatic Recorder) plays a complex eighth-note pattern with slurs and ties. Perc. Org. (Percussion Organ) is silent until measure 41, where it plays a series of chords.

42

Cb.

A. Rec.

Perc. Org.

Measures 42-44. Cb. continues the eighth-note pattern. A. Rec. plays a pattern of eighth notes with ties. Perc. Org. plays a series of chords in measure 42 and is silent in measures 43 and 44.

45

Cb.

A. Rec.

Perc. Org.

Measures 45-47. Cb. continues the eighth-note pattern. A. Rec. plays a pattern of eighth notes with ties. Perc. Org. is silent in all three measures.

48

Cb.

A. Rec.

Perc. Org.

Measures 48-50. Cb. continues the eighth-note pattern. A. Rec. plays a pattern of eighth notes with ties. Perc. Org. is silent in all three measures.

51

Cb.

A. Rec.

Perc. Org.

Measures 51-53: Cb. (Bass) plays a steady eighth-note pattern. A. Rec. (Alto) has a melodic line with some rests. Perc. Org. (Percussion/Organ) is silent.

54

Cb.

A. Rec.

Perc. Org.

Measures 54-56: Cb. (Bass) continues the eighth-note pattern. A. Rec. (Alto) has a melodic line with some rests. Perc. Org. (Percussion/Organ) is silent.

57

Cb.

A. Rec.

Perc. Org.

Measures 57-59: Cb. (Bass) continues the eighth-note pattern. A. Rec. (Alto) has a melodic line with some rests. Perc. Org. (Percussion/Organ) has a complex rhythmic pattern.

60

Cb.

A. Rec.

Perc. Org.

Measures 60-62: Cb. (Bass) continues the eighth-note pattern. A. Rec. (Alto) has a melodic line with some rests. Perc. Org. (Percussion/Organ) has a complex rhythmic pattern.

63

Cb.

A. Rec.

Perc. Org.

66

Cb.

A. Rec.

Perc. Org.

69

Cb.

A. Rec.

Perc. Org.

72

Cb.

A. Rec.

Perc. Org.

75

Cb.

A. Rec.

Perc. Org.

78

Cb.

A. Rec.

Perc. Org.

Measures 78-80. The Cb. part plays a steady eighth-note pattern. The A. Rec. part has rests in measures 78 and 79, then enters in measure 80 with a descending eighth-note line. The Perc. Org. part plays a series of chords in measures 78 and 79, then rests in measure 80.

81

Cb.

A. Rec.

Perc. Org.

Measures 81-83. The Cb. part continues its eighth-note pattern. The A. Rec. part has rests in measures 81 and 82, then enters in measure 83 with a descending eighth-note line. The Perc. Org. part plays a series of chords in measures 81 and 82, then rests in measure 83.

84

Cb.

A. Rec.

Perc. Org.

Measures 84-86. The Cb. part continues its eighth-note pattern. The A. Rec. part has rests in measures 84 and 85, then enters in measure 86 with a descending eighth-note line. The Perc. Org. part has rests in measures 84, 85, and 86.

87

Cb.

A. Rec.

Perc. Org.

Measures 87-89. The Cb. part continues its eighth-note pattern. The A. Rec. part has rests in measures 87 and 88, then enters in measure 89 with a descending eighth-note line. The Perc. Org. part has rests in measures 87, 88, and 89.

90

Cb.

A. Rec.

Perc. Org.

Measures 90-92. Cb. (Contrabass) plays a steady eighth-note pattern. A. Rec. (Accordion) plays chords and single notes. Perc. Org. (Percussion Organ) is silent.

93

Cb.

A. Rec.

Perc. Org.

Measures 93-95. Cb. (Contrabass) continues the eighth-note pattern. A. Rec. (Accordion) plays chords and single notes. Perc. Org. (Percussion Organ) is silent.

96

Cb.

A. Rec.

Perc. Org.

Measures 96-98. Cb. (Contrabass) continues the eighth-note pattern. A. Rec. (Accordion) plays chords and single notes. Perc. Org. (Percussion Organ) plays a series of chords.

99

Cb.

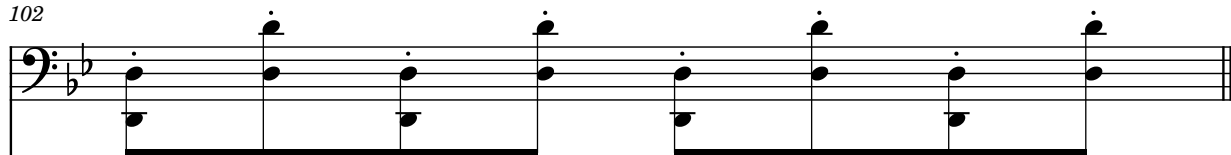
A. Rec.

Perc. Org.

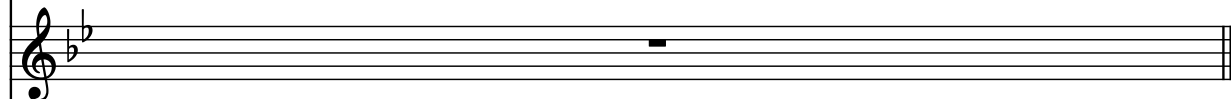
Measures 99-101. Cb. (Contrabass) continues the eighth-note pattern. A. Rec. (Accordion) plays chords and single notes. Perc. Org. (Percussion Organ) plays a series of chords.

102

Cb.



A. Rec.



Perc. Org.

