

Escape From Laboratory

Composer: Masami Ueda

Game: Resident Evil 2

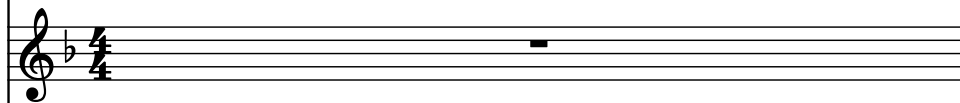
pianogame.org

♩ = 130

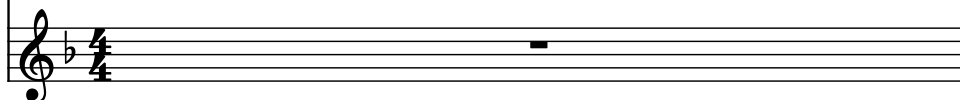
Bass Synthesizer, Electric Bass



Strings, StringInstrument



Strings, StringInstrument

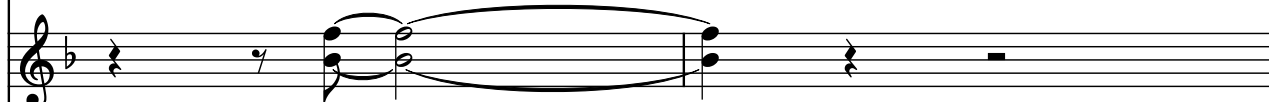


2

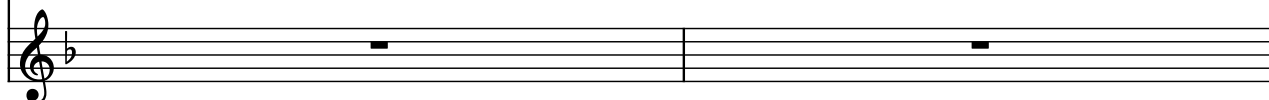
Synth.



St.



St.



4

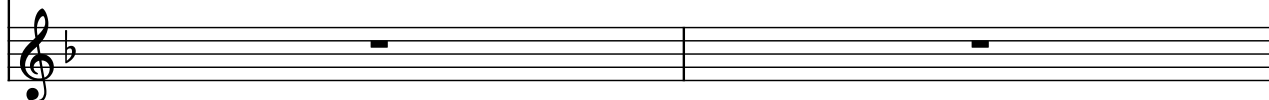
Synth.



St.



St.



6

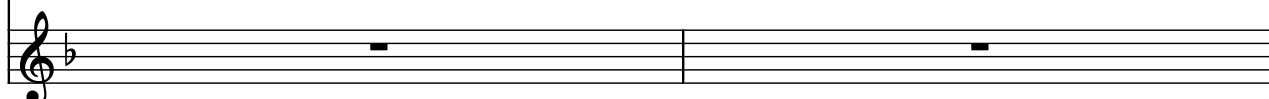
Synth.



St.



St.




8


Synth. 

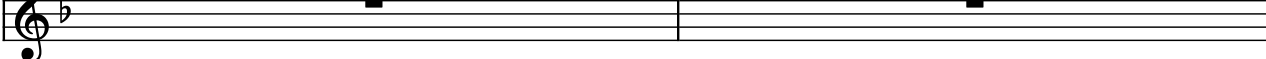
St. 

St. 


10

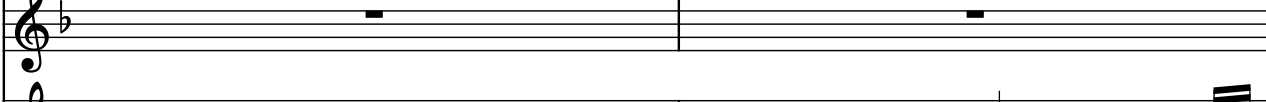
Synth. 

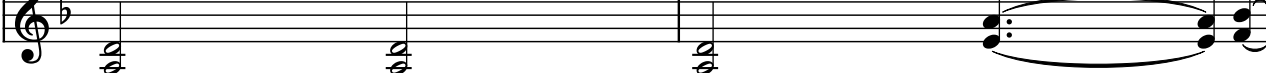
St. 

St. 


12

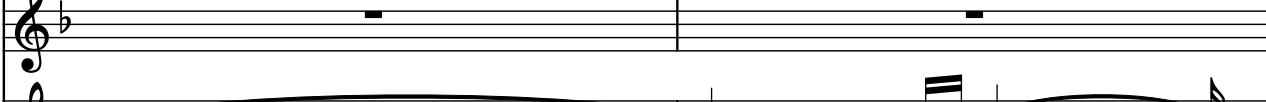
Synth. 

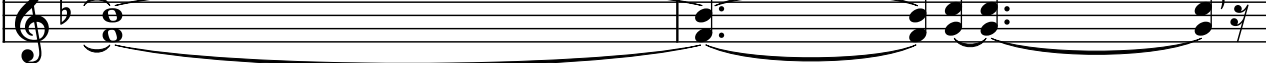
St. 

St. 


14

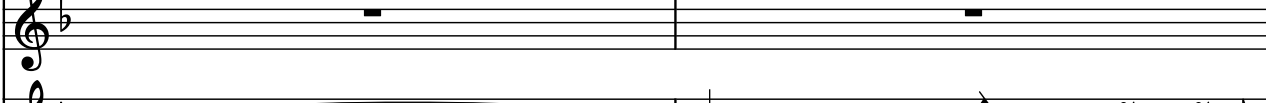
Synth. 


St. 

St. 

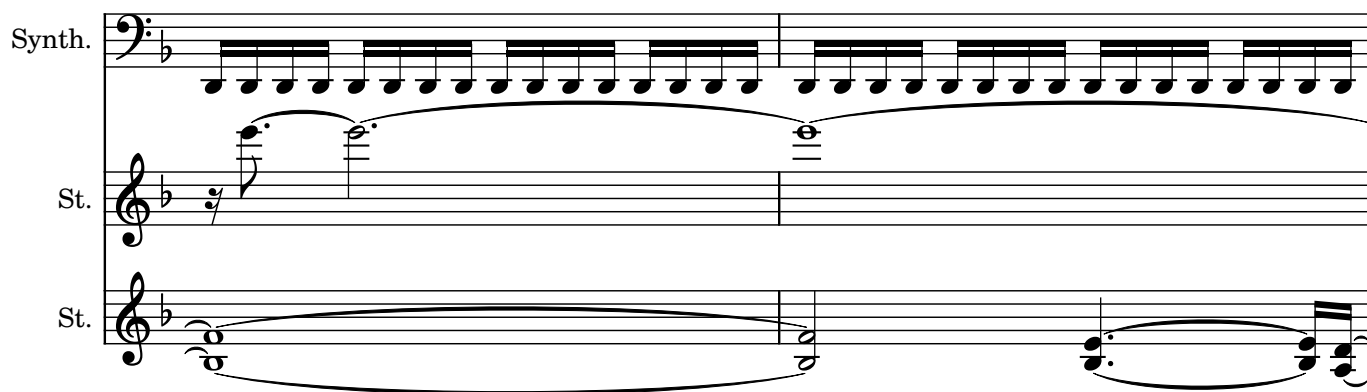
16

Synth. 

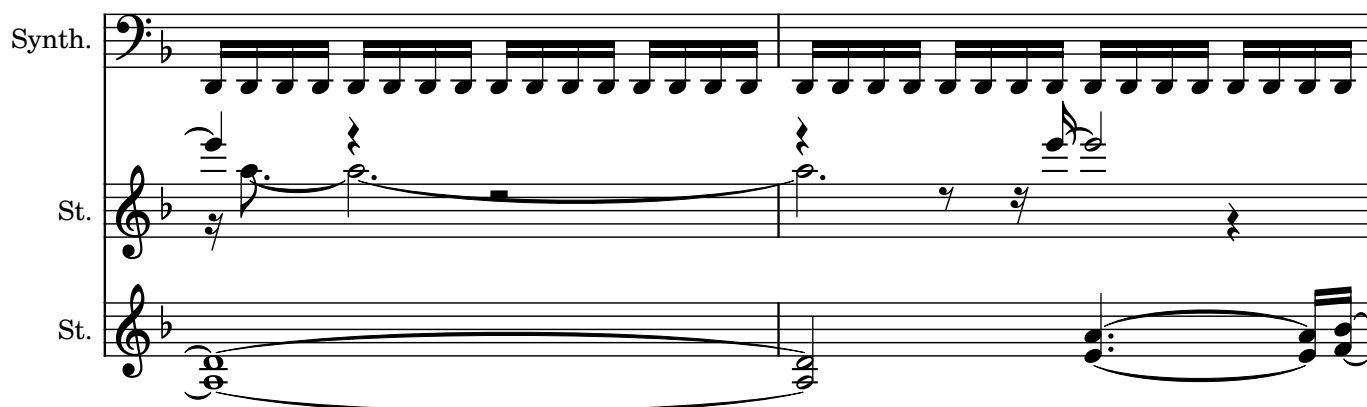
St. 

St. 

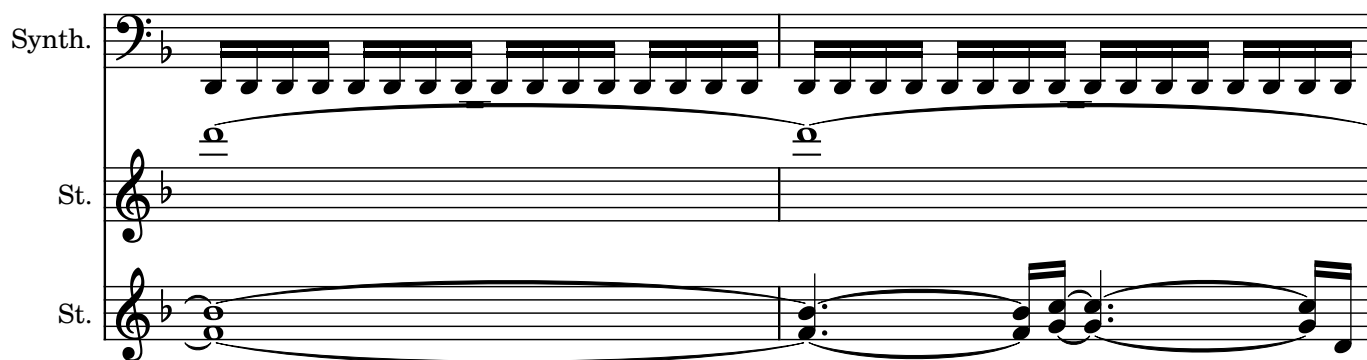
18

Synth. 

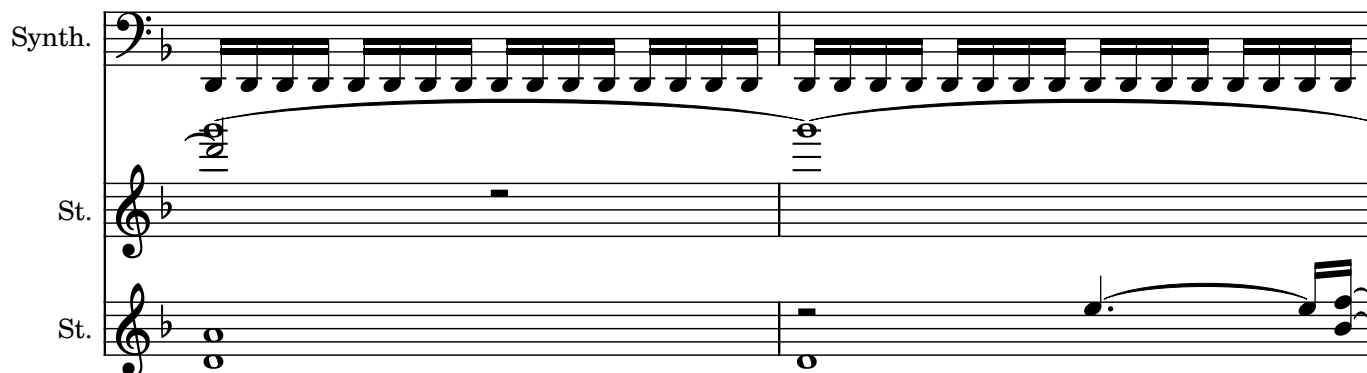
20

Synth. 

22

Synth. 

24

Synth. 

26

Synth.

St.

St.

26

28

Synth.

St.

St.

28

30

Synth.

St.

St.

30

32

Synth.

St.

St.

32

34

Synth.

St.

St.

34

36

Synth.

St.

St.

The image shows a musical score for three staves. The top staff is labeled 'Synth.' and uses a bass clef with a key signature of one flat (B-flat). It contains a continuous sequence of eighth notes, grouped in sets of four, across the entire staff. The two staves below are both labeled 'St.' and use a treble clef with a key signature of one flat (B-flat). Each of these staves contains a single, isolated eighth note positioned in the middle of the staff, with the rest of the staff being empty. All three staves end with a double bar line.