

Marble Zone (3)

Composer: Masato Nakamura

Game: Sonic the Hedgehog

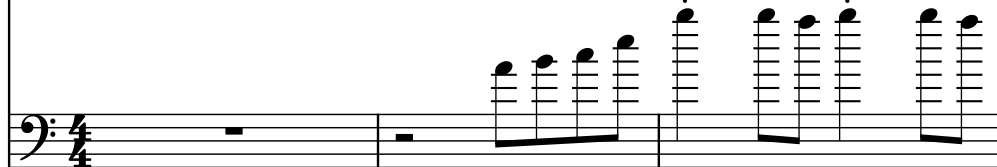
pianogame.org

♩ = 126

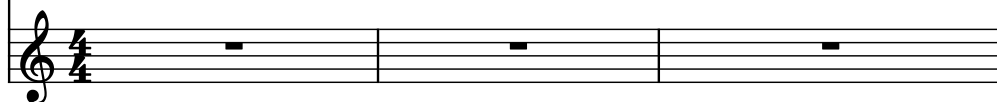
Bass Guitar, Electric Bass



Bass Guitar, Electric Bass



Mallet Synthesizer, Sampler

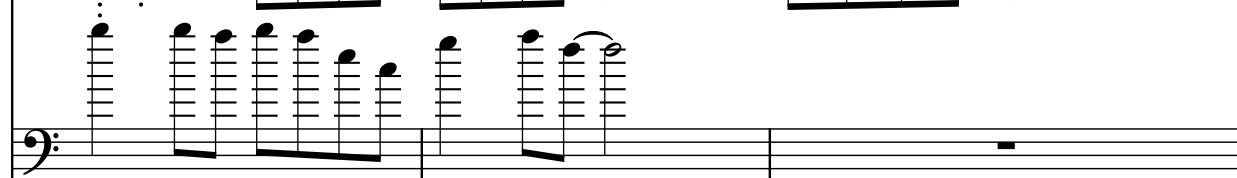


4

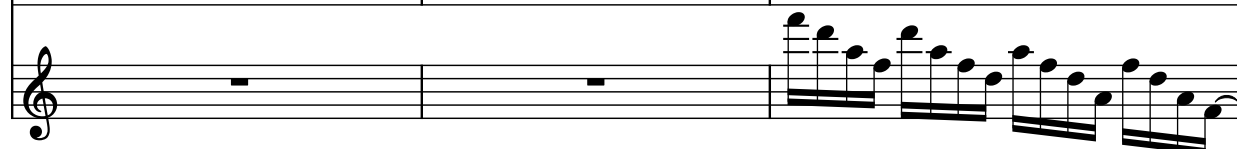
B. Guit.



B. Guit.



Mal. Syn.

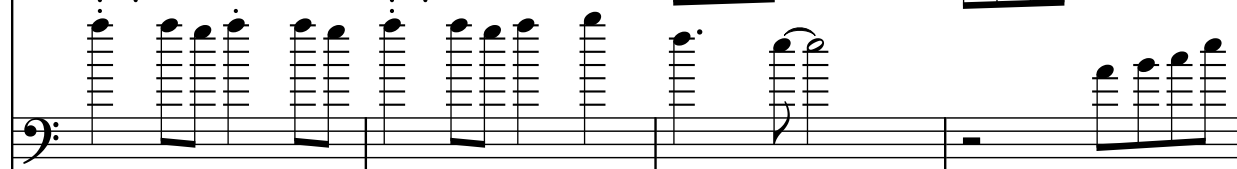


7

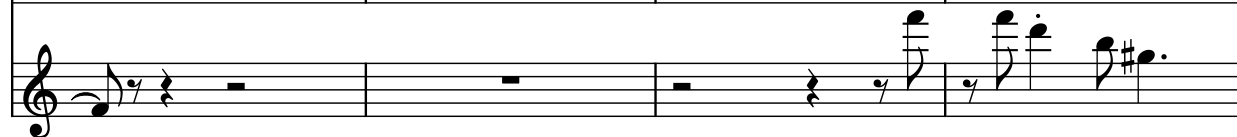
B. Guit.



B. Guit.



Mal. Syn.

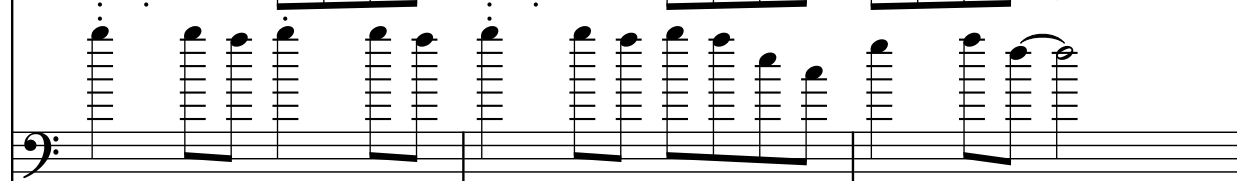


11

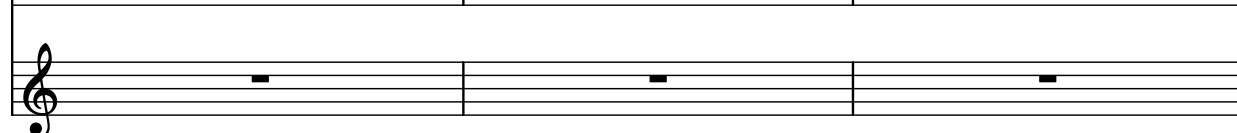
B. Guit.



B. Guit.



Mal. Syn.



14

B. Guit.

B. Guit.

Mal. Syn.

Measure 14: B. Guit. (bass clef) has a melodic line starting on G2, moving up stepwise to D3. Mal. Syn. (treble clef) has a melodic line starting on G4, moving up stepwise to D5. B. Guit. (bass clef) has a bass line with chords: G2-B2-D2, A1-C2-E2, F2-A2-C3, G2-B2-D2.

Measure 15: B. Guit. (bass clef) has a melodic line starting on E3, moving up stepwise to A3. Mal. Syn. (treble clef) has a melodic line starting on E4, moving up stepwise to A4. B. Guit. (bass clef) has a bass line with chords: E2-G2-B2, F2-A2-C3, G2-B2-D2, E2-G2-B2.

Measure 16: B. Guit. (bass clef) has a melodic line starting on B3, moving up stepwise to E4. Mal. Syn. (treble clef) has a melodic line starting on B4, moving up stepwise to E5. B. Guit. (bass clef) has a bass line with chords: B2-D2-F2, C3-E3-G3, A3-C4-E4, B2-D2-F2.

17

B. Guit.

B. Guit.

Mal. Syn.

Measure 17: B. Guit. (bass clef) has a melodic line starting on F4, moving up stepwise to B4. Mal. Syn. (treble clef) has a melodic line starting on F5, moving up stepwise to B5. B. Guit. (bass clef) has a bass line with chords: F2-A2-C3, G2-B2-D2, E2-G2-B2, F2-A2-C3.

Measure 18: B. Guit. (bass clef) has a melodic line starting on C5, moving up stepwise to F5. Mal. Syn. (treble clef) has a melodic line starting on C6, moving up stepwise to F6. B. Guit. (bass clef) has a bass line with chords: C3-E3-G3, A3-C4-E4, B3-D4-F4, C3-E3-G3.

Measure 19: B. Guit. (bass clef) has a melodic line starting on G5, moving up stepwise to C6. Mal. Syn. (treble clef) has a melodic line starting on G6, moving up stepwise to C7. B. Guit. (bass clef) has a bass line with chords: G2-B2-D2, A2-C3-E3, F3-A3-C4, G2-B2-D2.

20

B. Guit.

B. Guit.

Mal. Syn.

Measure 20: B. Guit. (bass clef) has a melodic line starting on D5, moving up stepwise to G5. Mal. Syn. (treble clef) has a melodic line starting on D6, moving up stepwise to G6. B. Guit. (bass clef) has a bass line with chords: D2-F2-A2, E2-G2-B2, C3-E3-G3, D2-F2-A2.

Measure 21: B. Guit. (bass clef) has a melodic line starting on A5, moving up stepwise to D6. Mal. Syn. (treble clef) has a melodic line starting on A6, moving up stepwise to D7. B. Guit. (bass clef) has a bass line with chords: A2-C3-E3, B2-D3-F3, C3-E3-G3, A2-C3-E3.

Measure 22: B. Guit. (bass clef) has a melodic line starting on B5, moving up stepwise to E6. Mal. Syn. (treble clef) has a melodic line starting on B6, moving up stepwise to E7. B. Guit. (bass clef) has a bass line with chords: B2-D3-F3, C3-E3-G3, A3-C4-E4, B2-D3-F3.

23

B. Guit.

B. Guit.

Mal. Syn.

Measure 23: B. Guit. (bass clef) has a melodic line starting on F5, moving up stepwise to B5. Mal. Syn. (treble clef) has a melodic line starting on F6, moving up stepwise to B6. B. Guit. (bass clef) has a bass line with chords: F2-A2-C3, G2-B2-D2, E2-G2-B2, F2-A2-C3.


Measure 24: B. Guit. (bass clef) has a melodic line starting on G5, moving up stepwise to C6. Mal. Syn. (treble clef) has a melodic line starting on G6, moving up stepwise to C7. B. Guit. (bass clef) has a bass line with chords: G2-B2-D2, A2-C3-E3, F3-A3-C4, G2-B2-D2.

Measure 25: B. Guit. (bass clef) has a melodic line starting on A5, moving up stepwise to D6. Mal. Syn. (treble clef) has a melodic line starting on A6, moving up stepwise to D7. B. Guit. (bass clef) has a bass line with chords: A2-C3-E3, B2-D3-F3, C3-E3-G3, A2-C3-E3.

26

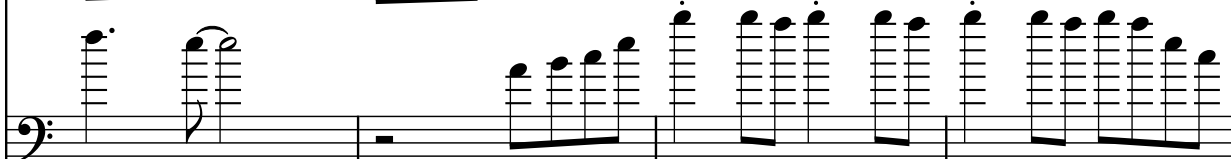
B. Guit. 

B. Guit. 

Mal. Syn. 


29

B. Guit. 

B. Guit. 

Mal. Syn. 


33

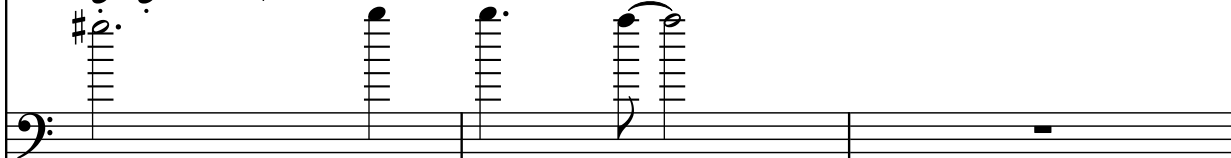
B. Guit. 

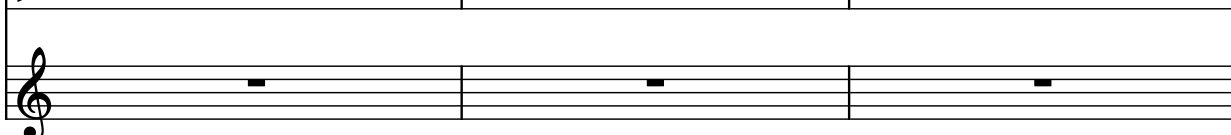
B. Guit. 

Mal. Syn. 


36

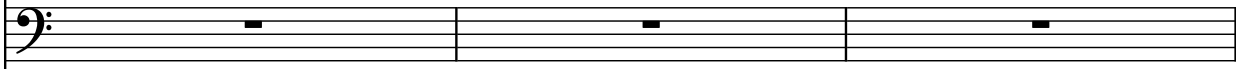
B. Guit. 


B. Guit. 

Mal. Syn. 


39

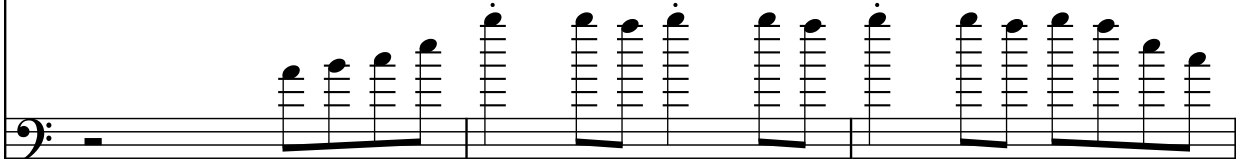
B. Guit. 


B. Guit. 

Mal. Syn. 


42

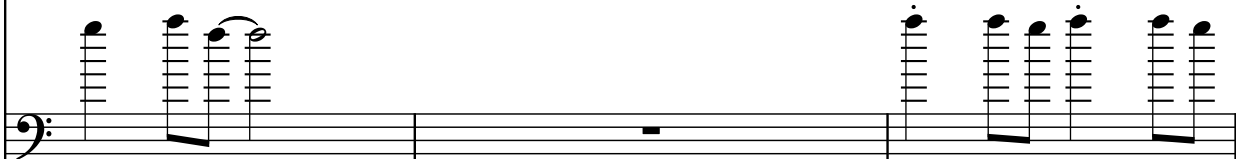
B. Guit. 

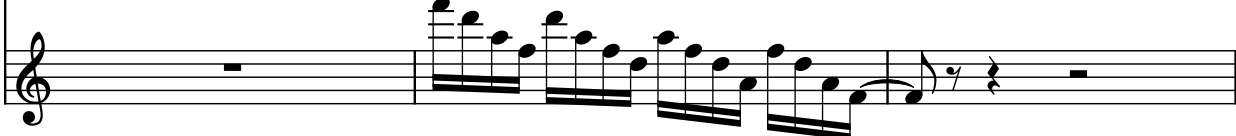
B. Guit. 

Mal. Syn. 

45

B. Guit. 

B. Guit. 

Mal. Syn. 

48

B. Guit. 

B. Guit. 

Mal. Syn. 