

Guardia Castle (2)

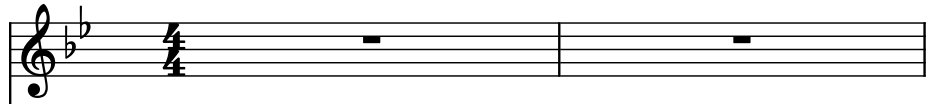
Composer: Nobuo Uematsu

Game: Chrono Trigger

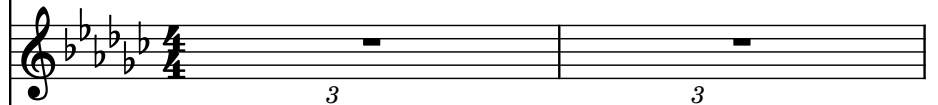
pianogame.org

♩ = 130

Trumpet, Guardia Castle Theme-



Violins (section), Sequenced by

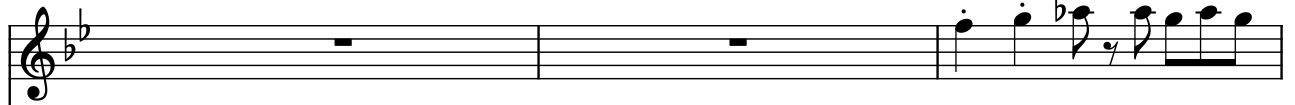


4-Piece Drum Kit, Chris Heneghan

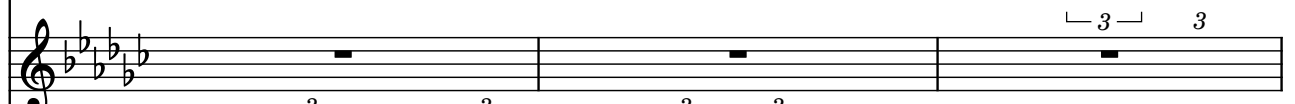


3

Tpt.



Vlms.



D. Kit



6

Tpt.



Vlms.



D. Kit



9

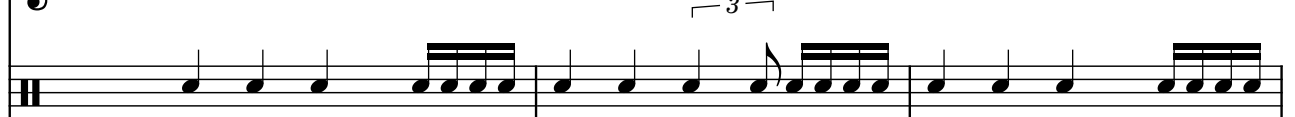
Tpt.



Vlms.



D. Kit



12

Tpt.

Vlms.

D. Kit

3 3 3

15

Tpt.

Vlms.

D. Kit

3 3 3

18

Tpt.

Vlms.

D. Kit

3 3 3

21

Tpt.

Vlms.

D. Kit

3 3 3

24

Tpt.

Vlms.

D. Kit

27

Tpt.

Vlms.

D. Kit

30

Tpt.

Vlms.

D. Kit

32

Tpt.

Vlms.

D. Kit

34

Tpt.

Vlms.

D. Kit

34

35

36

Tpt.

Vlms.

D. Kit

36

37

38

Tpt.

Vlms.

D. Kit

38

39

40

Tpt.

Vlms.

D. Kit

3 3 3 3

42

Tpt.

Vlms.

D. Kit

3 3 3 3

44

Tpt.

Vlms.

D. Kit

3 3 3 3

46

Tpt.

Vlms.

D. Kit

Measures 46-47. Tpt. (Trumpet) plays a melodic line starting with a half note and a quarter note. Vlms. (Violins) play a triplet of eighth notes. D. Kit (Drum Kit) plays a steady eighth-note pattern.

48

Tpt.

Vlms.

D. Kit

Measures 48-49. Tpt. (Trumpet) plays a melodic line starting with a half note and a quarter note. Vlms. (Violins) play a triplet of eighth notes. D. Kit (Drum Kit) plays a steady eighth-note pattern.

50

Tpt.

Vlms.

D. Kit

Measures 50-51. Tpt. (Trumpet) plays a melodic line starting with a half note and a quarter note. Vlms. (Violins) play a triplet of eighth notes. D. Kit (Drum Kit) plays a steady eighth-note pattern.

52

Tpt.

Vlms.

D. Kit

Measures 52-54. Tpt. (Trumpet) plays a melodic line starting with a half note and a quarter note. Vlms. (Violins) play a triplet of eighth notes. D. Kit (Drum Kit) plays a steady eighth-note pattern.

55

Tpt.

Vlms.

D. Kit

Measures 55-57. Tpt. (Trumpet) plays a melody in G-flat major. Vlms. (Violins) play a triplet of eighth notes. D. Kit (Drum Kit) plays a steady eighth-note pattern.

58

Tpt.

Vlms.

D. Kit

Measures 58-60. Tpt. (Trumpet) continues the melody. Vlms. (Violins) play a triplet of eighth notes. D. Kit (Drum Kit) continues the eighth-note pattern.

61

Tpt.

Vlms.

D. Kit

Measures 61-63. Tpt. (Trumpet) continues the melody. Vlms. (Violins) play a triplet of eighth notes. D. Kit (Drum Kit) continues the eighth-note pattern.

64

Tpt.

Vlms.

D. Kit

Measures 64-66. Tpt. (Trumpet) continues the melody. Vlms. (Violins) play a triplet of eighth notes. D. Kit (Drum Kit) continues the eighth-note pattern.

67

Tpt.

Vlms.

D. Kit

Measures 67-69. Tpt. part: Repeating eighth-note pattern. Vlms. part: Measures 67-68 feature triplets and a long slur. Measure 69 features a triplet. D. Kit part: Steady eighth-note accompaniment.

70

Tpt.

Vlms.

D. Kit

Measures 70-72. Tpt. part: Repeating eighth-note pattern. Vlms. part: Measures 70-71 feature triplets. Measure 72 features a long slur. D. Kit part: Steady eighth-note accompaniment.

73

Tpt.

Vlms.

D. Kit

Measures 73-75. Tpt. part: Repeating eighth-note pattern. Vlms. part: Measures 73-74 feature triplets. Measure 75 features a long slur. D. Kit part: Steady eighth-note accompaniment.

76

Tpt.

Vlms.

D. Kit

Measures 76-78. Tpt. part: Repeating eighth-note pattern. Vlms. part: Measures 76-77 feature triplets and a long slur. Measure 78 features a triplet. D. Kit part: Steady eighth-note accompaniment.

79

Tpt.

Vlns.

D. Kit

3

3

3

81

Tpt.

Vlns.

D. Kit

3

3

3

83

Tpt.

Vlns.

D. Kit

3

3

3

85

Tpt.

Vlns.

D. Kit

Measures 85-86 of a musical score. The Tpt. part has a whole note in measure 85 and a half note in measure 86. The Vlns. part has a whole note in measure 85 and a whole note in measure 86. The D. Kit part has a quarter note in measure 85 and a quarter note in measure 86. The key signature has two flats, and the time signature is 4/4.

87

Tpt.

Vlns.

D. Kit

Measures 87-88 of a musical score. The Tpt. part has a quarter note in measure 87 and a quarter note in measure 88. The Vlns. part has a quarter note in measure 87 and a quarter note in measure 88. The D. Kit part has a quarter note in measure 87 and a quarter note in measure 88. The key signature has two flats, and the time signature is 4/4.

89

Tpt.

Vlns.

D. Kit

Measures 89-90 of a musical score. The Tpt. part has a quarter note in measure 89 and a quarter note in measure 90. The Vlns. part has a quarter note in measure 89 and a quarter note in measure 90. The D. Kit part has a quarter note in measure 89 and a quarter note in measure 90. The key signature has two flats, and the time signature is 4/4.

91

Tpt.

Vlns.

D. Kit

3

3

3

3

93

Tpt.

Vlns.

D. Kit

7

3

3

3

3

3

95

Tpt.

Vlns.

D. Kit

3

3

3

3

3

3

97

Tpt.

Vlns.

D. Kit

Measures 97-98 of a musical score. The Tpt. part has a whole rest in measure 97 and a half note in measure 98. The Vlns. part has a whole rest in measure 97 and a half note in measure 98. The D. Kit part has a continuous eighth-note pattern. The key signature is B-flat major (two flats).

99

Tpt.

Vlns.

D. Kit

Measures 99-100 of a musical score. The Tpt. part has a whole rest in measure 99 and a half note in measure 100. The Vlns. part has a whole rest in measure 99 and a half note in measure 100. The D. Kit part has a continuous eighth-note pattern. The key signature is B-flat major (two flats).

101

Tpt.

Vlns.

D. Kit

Measures 101-103 of a musical score. The Tpt. part has a continuous eighth-note pattern in measures 101-102 and a whole rest in measure 103. The Vlns. part has a continuous eighth-note pattern in measures 101-102 and a whole rest in measure 103. The D. Kit part has a continuous eighth-note pattern. The key signature is B-flat major (two flats).

104

Tpt.

Vlns.

D. Kit

Measures 104-106 of a musical score. The Tpt. part has a whole rest in measure 104 and a half note in measure 105. The Vlns. part has a whole rest in measure 104 and a half note in measure 105. The D. Kit part has a continuous eighth-note pattern. The key signature is B-flat major (two flats).

107

Tpt.

Vlns.

D. Kit

Measures 107-109. Tpt. has a melodic line with eighth notes and rests. Vlns. has a triplet of eighth notes in each measure. D. Kit has a bass line with eighth notes and sixteenth note triplets.

110

Tpt.

Vlns.

D. Kit

Measures 110-112. Tpt. has a melodic line with eighth notes and rests. Vlns. has a triplet of eighth notes in each measure. D. Kit has a bass line with eighth notes and sixteenth note triplets.

113

Tpt.

Vlns.

D. Kit

Measures 113-115. Tpt. has a melodic line with eighth notes and rests. Vlns. has a triplet of eighth notes in the first measure, followed by a half note and a triplet of eighth notes in the second measure, and a triplet of eighth notes in the third measure. D. Kit has a bass line with eighth notes and sixteenth note triplets.

116

Tpt.

Vlns.

D. Kit

Measures 116-118. Tpt. has a melodic line with eighth notes and rests. Vlns. has a triplet of eighth notes in the first measure, followed by a half note and a triplet of eighth notes in the second measure, and a triplet of eighth notes in the third measure. D. Kit has a bass line with eighth notes and sixteenth note triplets.

119

Tpt.

Vlms.

D. Kit

122

Tpt.

Vlms.

D. Kit

125

Tpt.

Vlms.

D. Kit

128

Tpt.

Vlms.

D. Kit

131

Tpt.

Vlins.

D. Kit

Measures 131-132. Tpt. part features eighth notes and quarter notes. Vlins. part features a whole note chord and rests. D. Kit part features a continuous eighth-note pattern with triplets.

133

Tpt.

Vlins.

D. Kit

Measures 133-134. Tpt. part features eighth notes and quarter notes. Vlins. part features a whole note chord and eighth notes. D. Kit part features a continuous eighth-note pattern with triplets.

135

Tpt.

Vlins.

D. Kit

Measures 135-136. Tpt. part features half notes and quarter notes. Vlins. part features a whole note chord and a 7-measure rest. D. Kit part features a continuous eighth-note pattern with triplets.

137

Tpt.

Vlns.

D. Kit

This system contains measures 137 and 138. The Tpt. part has a whole rest in measure 137 and a dotted quarter note in measure 138, followed by eighth notes. The Vlns. part has a whole rest in measure 137 and a triplet of eighth notes in measure 138. The D. Kit part has a continuous eighth-note pattern with triplet markings.

139

Tpt.

Vlns.

D. Kit

This system contains measures 139 and 140. The Tpt. part has a whole rest in measure 139 and a dotted quarter note in measure 140, followed by eighth notes. The Vlns. part has a whole rest in measure 139 and a whole rest in measure 140. The D. Kit part has a continuous eighth-note pattern with triplet markings.

141

Tpt.

Vlns.

D. Kit

This system contains measures 141 and 142. The Tpt. part has a whole rest in measure 141 and a dotted quarter note in measure 142, followed by eighth notes. The Vlns. part has a whole rest in measure 141 and a triplet of eighth notes in measure 142. The D. Kit part has a continuous eighth-note pattern with triplet markings.

143

Tpt.

Vlins.

D. Kit

Measures 143-144. The Tpt. part has a melodic line starting on a half note G4, followed by a half note F4, and then a quarter note G4, quarter note F4, quarter note E4, and quarter note D4. The Vlins. part has a whole note chord of G4, B4, D5, and E5, followed by a whole rest. The D. Kit part has a rhythmic pattern of eighth notes: G4, A4, B4, C5, D5, E5, F5, G5, followed by a quarter rest, eighth notes G4, A4, B4, C5, D5, E5, F5, G5, and then a quarter rest.

145

Tpt.

Vlins.

D. Kit

Measures 145-146. The Tpt. part has a whole rest in measure 145, followed by a quarter note G4, quarter note F4, quarter note E4, and quarter note D4 in measure 146. The Vlins. part has a whole rest in measure 145, followed by a whole rest in measure 146. The D. Kit part has a rhythmic pattern of eighth notes: G4, A4, B4, C5, D5, E5, F5, G5, followed by a quarter rest, eighth notes G4, A4, B4, C5, D5, E5, F5, G5, and then a quarter rest.

147

Tpt.

Vlins.

D. Kit

Measures 147-148. The Tpt. part has a whole rest in measure 147, followed by a quarter note G4, quarter note F4, quarter note E4, and quarter note D4 in measure 148. The Vlins. part has a whole rest in measure 147, followed by a whole rest in measure 148. The D. Kit part has a rhythmic pattern of eighth notes: G4, A4, B4, C5, D5, E5, F5, G5, followed by a quarter rest, eighth notes G4, A4, B4, C5, D5, E5, F5, G5, and then a quarter rest.

149

Tpt.

Vlns.

D. Kit

Measures 149-150. Tpt. (Trumpet) has a melodic line starting with a whole rest, then eighth notes. Vlns. (Violins) has a triplet of eighth notes. D. Kit (Drum Kit) has a steady eighth-note pattern.

151

Tpt.

Vlns.

D. Kit

Measures 151-153. Tpt. (Trumpet) has a continuous eighth-note melody. Vlns. (Violins) has a triplet of eighth notes. D. Kit (Drum Kit) has a steady eighth-note pattern.

154

Tpt.

Vlns.

D. Kit

Measures 154-156. Tpt. (Trumpet) has a melodic line with eighth notes and rests. Vlns. (Violins) has a triplet of eighth notes. D. Kit (Drum Kit) has a steady eighth-note pattern.

157

Tpt.

Vlns.

D. Kit

Measures 157-159. Tpt. (Trumpet) has a melodic line with eighth notes and rests. Vlns. (Violins) has a triplet of eighth notes. D. Kit (Drum Kit) has a steady eighth-note pattern.

160

Tpt.

Vlms.

D. Kit

Measures 160-162. Tpt. (Trumpet) plays a melodic line with eighth and quarter notes. Vlms. (Violins) play a triplet of eighth notes in each measure. D. Kit (Drum Kit) plays a steady eighth-note pattern.

163

Tpt.

Vlms.

D. Kit

Measures 163-165. Tpt. continues the melodic line. Vlms. (Violins) play a triplet of eighth notes, followed by a half note, then a triplet of eighth notes. D. Kit continues the eighth-note pattern.

166

Tpt.

Vlms.

D. Kit

Measures 166-168. Tpt. continues the melodic line. Vlms. (Violins) play a triplet of eighth notes, followed by a half note, then a triplet of eighth notes. D. Kit continues the eighth-note pattern.

169

Tpt.

Vlms.

D. Kit

Measures 169-171. Tpt. continues the melodic line. Vlms. (Violins) play a triplet of eighth notes, followed by a half note, then a triplet of eighth notes. D. Kit continues the eighth-note pattern.

172

Tpt.

Vlns.

D. Kit

175

Tpt.

Vlns.

D. Kit

178

Tpt.

Vlns.

D. Kit

181

Tpt.

Vlns.

D. Kit

183

Tpt.

Vlns.

D. Kit

This system contains measures 183 and 184. The Tpt. part (treble clef, B-flat key signature) has a whole rest in measure 183, followed by a dotted quarter note G4, an eighth note F4, and a quarter note E4 in measure 184. The Vlns. part (treble clef, B-flat key signature) has a whole rest in measure 183, followed by a dotted quarter note G4, an eighth note F4, and a quarter note E4 in measure 184. The D. Kit part (bass clef) has a whole rest in measure 183, followed by a dotted quarter note G4, an eighth note F4, and a quarter note E4 in measure 184. The key signature is B-flat major (two flats).

185

Tpt.

Vlns.

D. Kit

This system contains measures 185 and 186. The Tpt. part (treble clef, B-flat key signature) has a whole rest in measure 185, followed by a dotted quarter note G4, an eighth note F4, and a quarter note E4 in measure 186. The Vlns. part (treble clef, B-flat key signature) has a whole rest in measure 185, followed by a dotted quarter note G4, an eighth note F4, and a quarter note E4 in measure 186. The D. Kit part (bass clef) has a whole rest in measure 185, followed by a dotted quarter note G4, an eighth note F4, and a quarter note E4 in measure 186. The key signature is B-flat major (two flats).

187

Tpt.

Vlns.

D. Kit

This system contains measures 187 and 188. The Tpt. part (treble clef, B-flat key signature) has a whole rest in measure 187, followed by a dotted quarter note G4, an eighth note F4, and a quarter note E4 in measure 188. The Vlns. part (treble clef, B-flat key signature) has a whole rest in measure 187, followed by a dotted quarter note G4, an eighth note F4, and a quarter note E4 in measure 188. The D. Kit part (bass clef) has a whole rest in measure 187, followed by a dotted quarter note G4, an eighth note F4, and a quarter note E4 in measure 188. The key signature is B-flat major (two flats).

189

Tpt.

Vlns.

D. Kit

Measures 189-190. Tpt. plays eighth notes with accents. Vlns. has a whole note chord and rests. D. Kit plays a triplet eighth note pattern.

191

Tpt.

Vlns.

D. Kit

Measures 191-192. Tpt. plays eighth notes with accents. Vlns. has a whole note chord and eighth notes. D. Kit plays a triplet eighth note pattern.

193

Tpt.

Vlns.

D. Kit

Measures 193-194. Tpt. plays half notes. Vlns. has a whole note chord and a 7-measure rest. D. Kit plays a triplet eighth note pattern.

195

Tpt.

Vlns.

D. Kit

Measures 195-196. The Tpt. part has a whole rest in measure 195 and a quarter rest in measure 196, followed by a melodic line. The Vlns. part has a whole rest in measure 195 and a whole rest in measure 196, with triplets of eighth notes in measures 195 and 196. The D. Kit part has a continuous eighth-note pattern.

197

Tpt.

Vlns.

D. Kit

Measures 197-198. The Tpt. part has a whole rest in measure 197 and a quarter rest in measure 198, followed by a melodic line. The Vlns. part has a whole rest in measure 197 and a whole rest in measure 198, with triplets of eighth notes in measures 197 and 198. The D. Kit part has a continuous eighth-note pattern.

199

Tpt.

Vlns.

D. Kit

Measures 199-200. The Tpt. part has a whole rest in measure 199 and a quarter rest in measure 200, followed by a melodic line. The Vlns. part has a whole rest in measure 199 and a whole rest in measure 200, with triplets of eighth notes in measures 199 and 200. The D. Kit part has a continuous eighth-note pattern.

201

Tpt.

Vlns.

D. Kit

Measures 201-203. The Tpt. part has a continuous eighth-note pattern in measures 201 and 202, followed by a whole rest in measure 203. The Vlns. part has a continuous eighth-note pattern in measures 201 and 202, followed by a whole rest in measure 203. The D. Kit part has a continuous eighth-note pattern.

204

Tpt.

Vlins.

D. Kit

Measures 204-206. Tpt. (Trumpet) plays a melody in G-flat major. Vlins. (Violins) play a triplet of eighth notes. D. Kit (Drum Kit) plays a steady eighth-note pattern.

207

Tpt.

Vlins.

D. Kit

Measures 207-209. Tpt. (Trumpet) continues the melody. Vlins. (Violins) play a triplet of eighth notes. D. Kit (Drum Kit) plays a steady eighth-note pattern.

210

Tpt.

Vlins.

D. Kit

Measures 210-212. Tpt. (Trumpet) continues the melody. Vlins. (Violins) play a triplet of eighth notes. D. Kit (Drum Kit) plays a steady eighth-note pattern.

213

Tpt.

Vlins.

D. Kit

Measures 213-215. Tpt. (Trumpet) continues the melody. Vlins. (Violins) play a triplet of eighth notes. D. Kit (Drum Kit) plays a steady eighth-note pattern.

216

Tpt.

Vlms.

D. Kit

Measures 216-218. Tpt. part: Repeating eighth-note pattern. Vlms. part: Triplets and a long slur. D. Kit part: Steady eighth-note accompaniment.

219

Tpt.

Vlms.

D. Kit

Measures 219-221. Tpt. part: Repeating eighth-note pattern. Vlms. part: Triplets and a long slur. D. Kit part: Steady eighth-note accompaniment.

222

Tpt.

Vlms.

D. Kit

Measures 222-224. Tpt. part: Repeating eighth-note pattern. Vlms. part: Triplets and a long slur. D. Kit part: Steady eighth-note accompaniment.

225

Tpt.

Vlms.

D. Kit

Measures 225-227. Tpt. part: Repeating eighth-note pattern. Vlms. part: Triplets and a long slur. D. Kit part: Steady eighth-note accompaniment.

228

Tpt.

Vlns.

D. Kit

3

3

3

231

Tpt.

Vlns.

D. Kit

3

3

3

233

Tpt.

Vlns.

D. Kit

3

3

3

235

Tpt.

Vlns.

D. Kit

Measures 235-236. The Tpt. part has a melodic line with a half note, a quarter note, and a dotted quarter note. The Vlns. part has a sustained note with a slur and a fermata. The D. Kit part has a rhythmic pattern of eighth and sixteenth notes, with triplets marked '3'.

237

Tpt.

Vlns.

D. Kit

Measures 237-238. The Tpt. part has a melodic line with a half note, a quarter note, and a dotted quarter note. The Vlns. part has a sustained note with a slur and a fermata. The D. Kit part has a rhythmic pattern of eighth and sixteenth notes, with triplets marked '3'.

239

Tpt.

Vlns.

D. Kit

Measures 239-240. The Tpt. part has a melodic line with a half note, a quarter note, and a dotted quarter note. The Vlns. part has a sustained note with a slur and a fermata. The D. Kit part has a rhythmic pattern of eighth and sixteenth notes, with triplets marked '3'.

241

Tpt.

Vlns.

D. Kit

Measures 241-242. Tpt. (Trumpet) has a melody with eighth and quarter notes. Vlns. (Violins) play a sustained chord with triplets. D. Kit (Drum Kit) has a rhythmic pattern with eighth and quarter notes.

243

Tpt.

Vlns.

D. Kit

Measures 243-244. Tpt. (Trumpet) has a melody with half and quarter notes. Vlns. (Violins) play a sustained chord with a slur. D. Kit (Drum Kit) has a rhythmic pattern with eighth and quarter notes.

245

Tpt.

Vlns.

D. Kit

Measures 245-246. Tpt. (Trumpet) has a melody with eighth and quarter notes. Vlns. (Violins) play a sustained chord with triplets. D. Kit (Drum Kit) has a rhythmic pattern with eighth and quarter notes.

247

Tpt.

Vlns.

D. Kit

Measures 247-248. The Tpt. part has a whole rest in measure 247 and a half note in measure 248. The Vlns. part has a whole rest in measure 247 and a half note in measure 248. The D. Kit part has a half note in measure 247 and a half note in measure 248. The key signature is B-flat major (two flats).

249

Tpt.

Vlns.

D. Kit

Measures 249-250. The Tpt. part has a whole rest in measure 249 and a half note in measure 250. The Vlns. part has a whole rest in measure 249 and a half note in measure 250. The D. Kit part has a half note in measure 249 and a half note in measure 250. The key signature is B-flat major (two flats).

251

Tpt.

Vlns.

D. Kit

Measures 251-253. The Tpt. part has a half note in measure 251, a half note in measure 252, and a whole rest in measure 253. The Vlns. part has a half note in measure 251, a half note in measure 252, and a whole rest in measure 253. The D. Kit part has a half note in measure 251, a half note in measure 252, and a half note in measure 253. The key signature is B-flat major (two flats).

254

Tpt.

Vlns.

D. Kit

Measures 254-256. The Tpt. part has a whole rest in measure 254, a half note in measure 255, and a half note in measure 256. The Vlns. part has a whole rest in measure 254, a half note in measure 255, and a half note in measure 256. The D. Kit part has a half note in measure 254, a half note in measure 255, and a half note in measure 256. The key signature is B-flat major (two flats).

257

Tpt.

Vlns.

D. Kit

Measures 257-259. Tpt. plays a repeating eighth-note pattern. Vlns. has rests with triplet markings. D. Kit plays a steady eighth-note pattern.

260

Tpt.

Vlns.

D. Kit

Measures 260-262. Tpt. continues the eighth-note pattern. Vlns. has rests with triplet markings. D. Kit continues the eighth-note pattern.

263

Tpt.

Vlns.

D. Kit

Measures 263-265. Tpt. continues the eighth-note pattern. Vlns. has a triplet, a half note, and a triplet. D. Kit continues the eighth-note pattern.

266

Tpt.

Vlns.

D. Kit

Measures 266-268. Tpt. continues the eighth-note pattern. Vlns. has a triplet, a half note, and a triplet. D. Kit continues the eighth-note pattern.

269

Tpt.

Vlms.

D. Kit

Measures 269-271. Tpt. plays a repeating eighth-note pattern. Vlms. play a melody with triplets. D. Kit plays a bass line with eighth-note triplets.

272

Tpt.

Vlms.

D. Kit

Measures 272-274. Tpt. continues the eighth-note pattern. Vlms. play a melody with a long slur and triplets. D. Kit continues the bass line with eighth-note triplets.

275

Tpt.

Vlms.

D. Kit

Measures 275-277. Tpt. continues the eighth-note pattern. Vlms. play a melody with a long slur and triplets. D. Kit continues the bass line with eighth-note triplets.

278

Tpt.

Vlms.

D. Kit

Measures 278-280. Tpt. plays a melody with eighth notes. Vlms. play a melody with triplets and a long slur. D. Kit continues the bass line with eighth-note triplets.

281

Tpt.

Vlns.

D. Kit

Measure 281: Tpt. has a half rest followed by a dotted quarter note, then an eighth rest followed by a quarter note. Vlns. has a sustained note with a triplet of eighth notes. D. Kit has a quarter note, eighth notes, and a triplet of eighth notes.

Measure 282: Tpt. has a half rest followed by a dotted quarter note, then an eighth rest followed by a quarter note. Vlns. has a sustained note with a triplet of eighth notes. D. Kit has a quarter note, eighth notes, and a triplet of eighth notes.

283

Tpt.

Vlns.

D. Kit

Measure 283: Tpt. has a half rest followed by a dotted quarter note, then an eighth rest followed by a quarter note. Vlns. has a sustained note with a triplet of eighth notes. D. Kit has a quarter note, eighth notes, and a triplet of eighth notes.

Measure 284: Tpt. has a half rest followed by a dotted quarter note, then an eighth rest followed by a quarter note. Vlns. has a sustained note with a triplet of eighth notes. D. Kit has a quarter note, eighth notes, and a triplet of eighth notes.

285

Tpt.

Vlns.

D. Kit

Measure 285: Tpt. has a half rest followed by a dotted quarter note, then an eighth rest followed by a quarter note. Vlns. has a sustained note with a 7-measure rest. D. Kit has a quarter note, eighth notes, and a triplet of eighth notes.

Measure 286: Tpt. has a half rest followed by a dotted quarter note, then an eighth rest followed by a quarter note. Vlns. has a sustained note with a 7-measure rest. D. Kit has a quarter note, eighth notes, and a triplet of eighth notes.

287

Tpt.

Vlns.

D. Kit

Score for measures 287-288. The Tpt. part has a whole rest in measure 287 and a dotted quarter note in measure 288. The Vlns. part has a whole rest in measure 287 and a triplet of eighth notes in measure 288. The D. Kit part has a continuous eighth-note triplet pattern across both measures.

289

Tpt.

Vlns.

D. Kit

Score for measures 289-290. The Tpt. part has a whole rest in measure 289 and a dotted quarter note in measure 290. The Vlns. part has a whole rest in measure 289 and a whole rest in measure 290. The D. Kit part has a continuous eighth-note triplet pattern across both measures.

291

Tpt.

Vlns.

D. Kit

Score for measures 291-292. The Tpt. part has a whole rest in measure 291 and a dotted quarter note in measure 292. The Vlns. part has a whole rest in measure 291 and a triplet of eighth notes in measure 292. The D. Kit part has a continuous eighth-note triplet pattern across both measures.

293

Tpt.

Vlns.

D. Kit

This system contains measures 293 and 294. The Tpt. part (treble clef, B-flat key signature) has a half note in measure 293 and a quarter note in measure 294. The Vlns. part (treble clef, B-flat key signature) has a whole note in measure 293 and a whole note in measure 294. The D. Kit part (bass clef) has a quarter note in measure 293 and a quarter note in measure 294. There are triplets of eighth notes in measures 293 and 294. A bracket with the number 7 is placed over the Vlns. part in measure 294.

295

Tpt.

Vlns.

D. Kit

This system contains measures 295 and 296. The Tpt. part (treble clef, B-flat key signature) has a whole note in measure 295 and a whole note in measure 296. The Vlns. part (treble clef, B-flat key signature) has a whole note in measure 295 and a whole note in measure 296. The D. Kit part (bass clef) has a quarter note in measure 295 and a quarter note in measure 296. There are triplets of eighth notes in measures 295 and 296.

297

Tpt.

Vlns.

D. Kit

This system contains measures 297 and 298. The Tpt. part (treble clef, B-flat key signature) has a whole note in measure 297 and a whole note in measure 298. The Vlns. part (treble clef, B-flat key signature) has a whole note in measure 297 and a whole note in measure 298. The D. Kit part (bass clef) has a quarter note in measure 297 and a quarter note in measure 298. There are triplets of eighth notes in measures 297 and 298.

299

Tpt.

Vlns.

D. Kit

Measures 299-300. Tpt. (Trumpet) has a melodic line starting with a whole rest, then eighth notes. Vlns. (Violins) has a triplet of eighth notes. D. Kit (Drum Kit) has a steady eighth-note pattern.

301

Tpt.

Vlns.

D. Kit

Measures 301-303. Tpt. (Trumpet) has a continuous eighth-note pattern. Vlns. (Violins) has a triplet of eighth notes. D. Kit (Drum Kit) has a steady eighth-note pattern.

304

Tpt.

Vlns.

D. Kit

Measures 304-306. Tpt. (Trumpet) has a melodic line with eighth notes. Vlns. (Violins) has a triplet of eighth notes. D. Kit (Drum Kit) has a steady eighth-note pattern.

307

Tpt.

Vlns.

D. Kit

Measures 307-309. Tpt. (Trumpet) has a melodic line with eighth notes. Vlns. (Violins) has a triplet of eighth notes. D. Kit (Drum Kit) has a steady eighth-note pattern.

310

Tpt.

Vlms.

D. Kit

Measures 310-312. Tpt. plays a repeating eighth-note pattern. Vlms. has rests with triplet markings. D. Kit plays a steady eighth-note pattern.

313

Tpt.

Vlms.

D. Kit

Measures 313-315. Tpt. continues the eighth-note pattern. Vlms. has a half note, a quarter note, and a half note with a slur. D. Kit continues the eighth-note pattern.

316

Tpt.

Vlms.

D. Kit

Measures 316-318. Tpt. continues the eighth-note pattern. Vlms. has a half note, a quarter note, and a half note with a slur. D. Kit continues the eighth-note pattern.

319

Tpt.

Vlms.

D. Kit

Measures 319-321. Tpt. continues the eighth-note pattern. Vlms. has a half note, a quarter note, and a half note with a slur. D. Kit continues the eighth-note pattern.

322

Tpt.

Vlns.

D. Kit

Measures 322-324. Tpt. has a melodic line with eighth notes and rests. Vlns. has a triplet of eighth notes, a half note, and a triplet of eighth notes. D. Kit has a steady eighth-note pattern.

325

Tpt.

Vlns.

D. Kit

Measures 325-327. Tpt. has a melodic line with eighth notes and rests. Vlns. has a triplet of eighth notes, a half note, and a triplet of eighth notes. D. Kit has a steady eighth-note pattern.

328

Tpt.

Vlns.

D. Kit

Measures 328-330. Tpt. has a melodic line with eighth notes and rests. Vlns. has a triplet of eighth notes, a half note, and a triplet of eighth notes. D. Kit has a steady eighth-note pattern.

331

Tpt.

Vlns.

D. Kit

Measures 331-333. Tpt. has a melodic line with eighth notes and rests. Vlns. has a triplet of eighth notes, a half note, and a triplet of eighth notes. D. Kit has a steady eighth-note pattern.

333

Tpt.

Vlins.

D. Kit

This system contains measures 333 and 334. The Tpt. part (treble clef, B-flat key signature) has a whole rest in 333, followed by a dotted quarter note G4, an eighth note F4, and a quarter note E4 in 334. The Vlins. part (treble clef, B-flat key signature) has a whole rest in 333, followed by a dotted quarter note G4, an eighth note F4, and a quarter note E4 in 334. The D. Kit part (bass clef) has a whole rest in 333, followed by a dotted quarter note G4, an eighth note F4, and a quarter note E4 in 334. Measure 334 includes triplets of eighth notes in the Vlins. and D. Kit parts.

335

Tpt.

Vlins.

D. Kit

This system contains measures 335 and 336. The Tpt. part (treble clef, B-flat key signature) has a whole note G4 in 335, followed by a dotted quarter note G4, an eighth note F4, and a quarter note E4 in 336. The Vlins. part (treble clef, B-flat key signature) has a whole note G4 in 335, followed by a dotted quarter note G4, an eighth note F4, and a quarter note E4 in 336. The D. Kit part (bass clef) has a whole rest in 335, followed by a dotted quarter note G4, an eighth note F4, and a quarter note E4 in 336. Measure 336 includes triplets of eighth notes in the Vlins. and D. Kit parts.

337

Tpt.

Vlins.

D. Kit

This system contains measures 337 and 338. The Tpt. part (treble clef, B-flat key signature) has a whole rest in 337, followed by a dotted quarter note G4, an eighth note F4, and a quarter note E4 in 338. The Vlins. part (treble clef, B-flat key signature) has a whole rest in 337, followed by a dotted quarter note G4, an eighth note F4, and a quarter note E4 in 338. The D. Kit part (bass clef) has a whole rest in 337, followed by a dotted quarter note G4, an eighth note F4, and a quarter note E4 in 338. Measure 338 includes triplets of eighth notes in the Vlins. and D. Kit parts.

339

Tpt.

Vlins.

D. Kit

339

3

3

3

341

Tpt.

Vlins.

D. Kit

341

3

3

3

343

Tpt.

Vlins.

D. Kit

343

7

3

3

3

345

Tpt.

Vlins.

D. Kit

Measures 345-346. The Tpt. part has a whole rest in measure 345 and a melodic line in measure 346. The Vlins. part has a whole rest in measure 345 and a triplet of eighth notes in measure 346. The D. Kit part has a continuous eighth-note pattern.

347

Tpt.

Vlins.

D. Kit

Measures 347-348. The Tpt. part has a whole rest in measure 347 and a melodic line in measure 348. The Vlins. part has a whole rest in measure 347 and a triplet of eighth notes in measure 348. The D. Kit part has a continuous eighth-note pattern.

349

Tpt.

Vlins.

D. Kit

Measures 349-350. The Tpt. part has a whole rest in measure 349 and a melodic line in measure 350. The Vlins. part has a whole rest in measure 349 and a triplet of eighth notes in measure 350. The D. Kit part has a continuous eighth-note pattern.

351

Tpt.

Vlins.

D. Kit

Measures 351-353. The Tpt. part has a continuous eighth-note pattern in measures 351-352 and a whole rest in measure 353. The Vlins. part has a continuous eighth-note pattern in measures 351-352 and a whole rest in measure 353. The D. Kit part has a continuous eighth-note pattern.

354

Tpt.

Vlins.

D. Kit

Measures 354-356. Tpt. has a melodic line with flats. Vlins. has triplets. D. Kit has a rhythmic pattern.

357

Tpt.

Vlins.

D. Kit

Measures 357-359. Tpt. has a melodic line with flats. Vlins. has triplets. D. Kit has a rhythmic pattern.

360

Tpt.

Vlins.

D. Kit

Measures 360-362. Tpt. has a melodic line with flats. Vlins. has triplets. D. Kit has a rhythmic pattern.

363

Tpt.

Vlins.

D. Kit

Measures 363-365. Tpt. has a melodic line with flats. Vlins. has a triplet and a slur. D. Kit has a rhythmic pattern.

366

Tpt.

Vlms.

D. Kit

Measures 366-368. Tpt. part: Repeating eighth-note pattern. Vlms. part: Triplets and a long slur. D. Kit part: Steady eighth-note accompaniment.

369

Tpt.

Vlms.

D. Kit

Measures 369-371. Tpt. part: Repeating eighth-note pattern. Vlms. part: Triplets and a long slur. D. Kit part: Steady eighth-note accompaniment.

372

Tpt.

Vlms.

D. Kit

Measures 372-374. Tpt. part: Repeating eighth-note pattern. Vlms. part: Triplets and a long slur. D. Kit part: Steady eighth-note accompaniment.

375

Tpt.

Vlms.

D. Kit

Measures 375-377. Tpt. part: Repeating eighth-note pattern. Vlms. part: Triplets and a long slur. D. Kit part: Steady eighth-note accompaniment.

378

Tpt.

Vlns.

D. Kit

378

379

380

381

Tpt.

Vlns.

D. Kit

381

382

383

Tpt.

Vlns.

D. Kit

383

384

385

Tpt.

Vlns.

D. Kit

Measures 385-386. The Tpt. part has a whole note in measure 385 and a half note in measure 386. The Vlns. part has a whole note in measure 385 and a whole note in measure 386. The D. Kit part has a quarter note in measure 385 and a quarter note in measure 386. The key signature is B-flat major (two flats).

387

Tpt.

Vlns.

D. Kit

Measures 387-388. The Tpt. part has a quarter note in measure 387 and a quarter note in measure 388. The Vlns. part has a quarter note in measure 387 and a quarter note in measure 388. The D. Kit part has a quarter note in measure 387 and a quarter note in measure 388. The key signature is B-flat major (two flats).

389

Tpt.

Vlns.

D. Kit

Measures 389-390. The Tpt. part has a quarter note in measure 389 and a quarter note in measure 390. The Vlns. part has a quarter note in measure 389 and a quarter note in measure 390. The D. Kit part has a quarter note in measure 389 and a quarter note in measure 390. The key signature is B-flat major (two flats).

391

Tpt.

Vlns.

D. Kit

3

3

3

3

393

Tpt.

Vlns.

D. Kit

7

3

3

3

3

3

395

Tpt.

Vlns.

D. Kit

3

3

3

3

3

3

397

Tpt.

Vlns.

D. Kit

Measures 397-398. The Tpt. part has a whole rest in 397 and a half note in 398. The Vlns. part has a whole rest in 397 and a half note in 398. The D. Kit part has a continuous eighth-note pattern.

399

Tpt.

Vlns.

D. Kit

Measures 399-400. The Tpt. part has a whole rest in 399 and a half note in 400. The Vlns. part has a whole rest in 399 and a half note in 400. The D. Kit part has a continuous eighth-note pattern.

401

Tpt.

Vlns.

D. Kit

Measures 401-403. The Tpt. part has a continuous eighth-note pattern in 401 and 402, and a whole rest in 403. The Vlns. part has a continuous eighth-note pattern in 401 and 402, and a whole rest in 403. The D. Kit part has a continuous eighth-note pattern.

404

Tpt.

Vlns.

D. Kit

Measures 404-406. The Tpt. part has a whole rest in 404, and eighth-note patterns in 405 and 406. The Vlns. part has a whole rest in 404, and eighth-note patterns in 405 and 406. The D. Kit part has a continuous eighth-note pattern.

407

Tpt.

Vlns.

D. Kit

Measures 407-410: Tpt. plays a repeating eighth-note pattern. Vlns. plays a triplet of eighth notes. D. Kit plays a single eighth note.

411

Tpt.

Vlns.

D. Kit

Measures 411-414: Tpt. continues with the repeating eighth-note pattern. Vlns. plays a triplet of eighth notes in measures 411 and 412, followed by a quarter note in measure 413, and a half note in measure 414. D. Kit continues with a single eighth note in each measure.

415

Tpt.

Vlns.

D. Kit

Measures 415-417: Tpt. continues with the repeating eighth-note pattern. Vlns. plays a triplet of eighth notes in measure 415, followed by a quarter note in measure 416, and a half note in measure 417. D. Kit continues with a single eighth note in each measure.

418

Tpt.

Vlns.

D. Kit

Measures 418-421: Tpt. continues with the repeating eighth-note pattern. Vlns. plays a triplet of eighth notes in measure 418, followed by a quarter note in measure 419, and a half note in measure 420. D. Kit continues with a single eighth note in each measure.

422

Tpt.

Vlins.

D. Kit

Measures 422-424. Tpt. has a melodic line with eighth and quarter notes. Vlins. has a triplet of eighth notes, a quarter note, and a half note. D. Kit has a simple drum pattern.

425

Tpt.

Vlins.

D. Kit

Measures 425-428. Tpt. has a melodic line with eighth and quarter notes. Vlins. has a triplet of eighth notes, a quarter note, and a half note. D. Kit has a simple drum pattern.

429

Tpt.

Vlins.

D. Kit

Measures 429-432. Tpt. has a melodic line with eighth and quarter notes. Vlins. has a triplet of eighth notes, a quarter note, and a half note. D. Kit has a simple drum pattern.

433

Tpt.

Vlins.

D. Kit

Measures 433-436. Tpt. has a melodic line with eighth and quarter notes. Vlins. has a triplet of eighth notes, a quarter note, and a half note. D. Kit has a simple drum pattern.

437

Tpt.

Vlins.

D. Kit

Measures 437-440. Tpt. has a melodic line with eighth notes and rests. Vlins. has a bass line with triplets and rests. D. Kit has a drum line with rests.

441

Tpt.

Vlins.

D. Kit

Measures 441-444. Tpt. has a melodic line with eighth notes and rests. Vlins. has a bass line with triplets and rests. D. Kit has a drum line with rests.

445

Tpt.

Vlins.

D. Kit

Measures 445-448. Tpt. has a melodic line with eighth notes and rests. Vlins. has a bass line with triplets and rests. D. Kit has a drum line with rests.

449

Tpt.

Vlins.

D. Kit

Measures 449-452. Tpt. has a melodic line with eighth notes and rests. Vlins. has a bass line with triplets and rests. D. Kit has a drum line with rests.

452

Tpt.

Vlms.

D. Kit

3 3 3 3

3

456

Tpt.

Vlms.

D. Kit

3 3 3 3

3

460

Tpt.

Vlms.

D. Kit

3 3 3 3

3

464

Tpt.

Vlms.

D. Kit

3 3 3 3

3

467

Tpt.

Vlms.

D. Kit

Measures 467-470. Tpt. part: Repeating eighth-note pattern. Vlms. part: Measures 467-468 have triplets. Measures 468-469 are slurred. Measures 469-470 have triplets. D. Kit part: Steady eighth-note pattern.

471

Tpt.

Vlms.

D. Kit

Measures 471-474. Tpt. part: Repeating eighth-note pattern. Vlms. part: Measures 471-472 have triplets. Measures 472-473 are slurred. Measures 473-474 have triplets. D. Kit part: Steady eighth-note pattern.

474

Tpt.

Vlms.

D. Kit

Measures 474-477. Tpt. part: Repeating eighth-note pattern. Vlms. part: Measures 474-475 have triplets. Measures 475-476 are slurred. Measures 476-477 have triplets. D. Kit part: Steady eighth-note pattern.

478

Tpt.

Vlms.

D. Kit

Measures 478-481. Tpt. part: Repeating eighth-note pattern. Vlms. part: Measures 478-479 have triplets. Measures 479-480 are slurred. Measures 480-481 have triplets. D. Kit part: Steady eighth-note pattern.

482

Tpt.

Vlns.

D. Kit

Measures 482-485. Tpt. has a melodic line with eighth and sixteenth notes. Vlns. has triplets and a long note. D. Kit has a simple drum pattern.

486

Tpt.

Vlns.

D. Kit

Measures 486-489. Tpt. has a melodic line with eighth and sixteenth notes. Vlns. has triplets and a long note. D. Kit has a simple drum pattern.

490

Tpt.

Vlns.

D. Kit

Measures 490-493. Tpt. has a melodic line with eighth and sixteenth notes. Vlns. has triplets and a long note. D. Kit has a simple drum pattern.

494

Tpt.

Vlns.

D. Kit

Measures 494-497. Tpt. has a melodic line with eighth and sixteenth notes. Vlns. has triplets and a long note. D. Kit has a simple drum pattern.

498

Tpt.

Vlns.

D. Kit

3 3 3

501

Tpt.

Vlrs.

D. Kit

3 3 3 3 3 3 3 3