

# **"Desert Requiem" - Ikari Team**

Composer: Shinsekai Gakkyoku Zatsugidan

Game: King of Fighters '95, The

[pianogame.org](http://pianogame.org)

**♩ = 122**

4

8

10

**♩ = 105**

12

12

Musical score for 'The Rose Tree' (continued). The score is written on a single staff with a treble clef and a key signature of one flat (B-flat). The melody continues with various note values, including eighth and sixteenth notes, and rests. The piece concludes with a final cadence.

14

14

Example 14

16

16 

18

18 

20

20



22

[illegible]

24

24

Musical notation for measure 24, featuring a treble clef, a key signature of one sharp (F#), and a 4/4 time signature. The melody consists of eighth and sixteenth notes, with a repeat sign at the end.

**2**

3

26

26

3

28

28

Example 28

30

30



32

32



34

34



36

36



38

38

Exercise 38 is a single-staff piece in treble clef with a key signature of one sharp (F#). It consists of a series of eighth and sixteenth notes, with some notes beamed together. There are several rests and a double bar line in the middle of the exercise.

40

40



42


42



Example 42 is a 12-measure piece in 2/4 time. The melody is on a single staff with a treble clef. It consists of eighth and sixteenth notes, with some measures containing rests. The key signature has one sharp (F#). The piece ends with a double bar line.

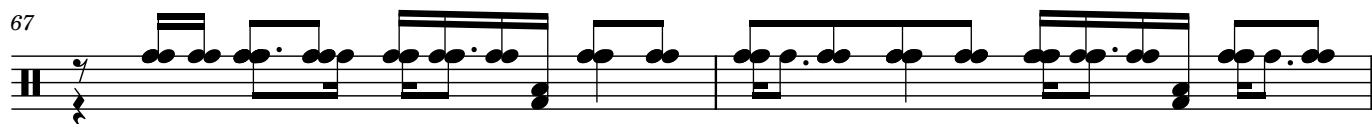
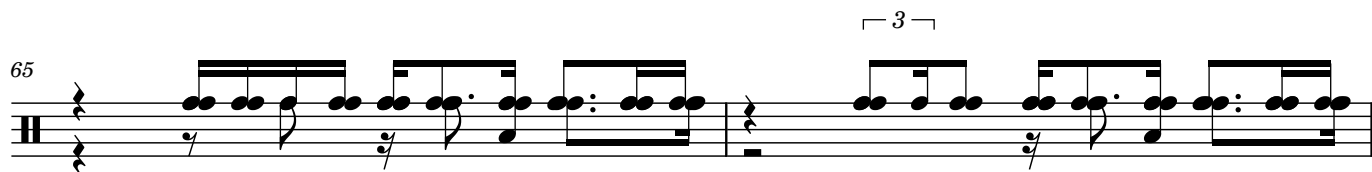
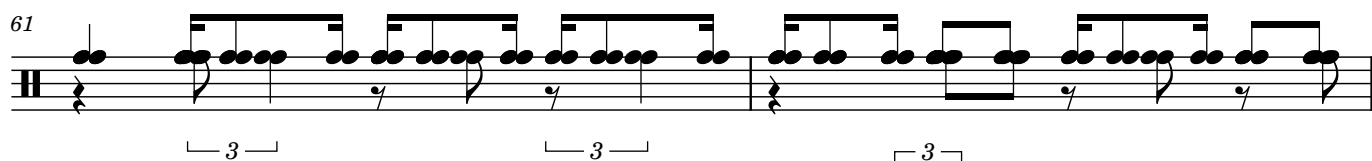
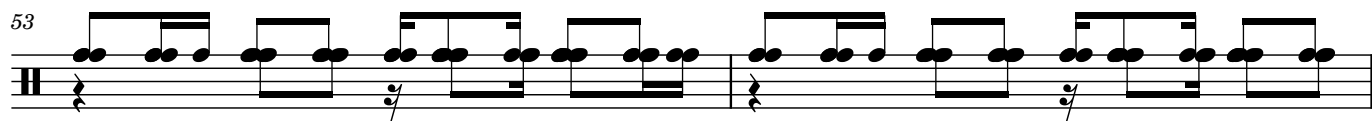
44

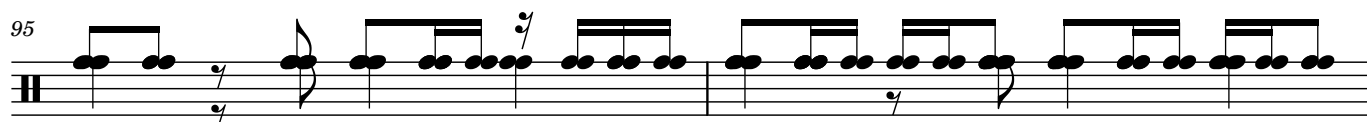
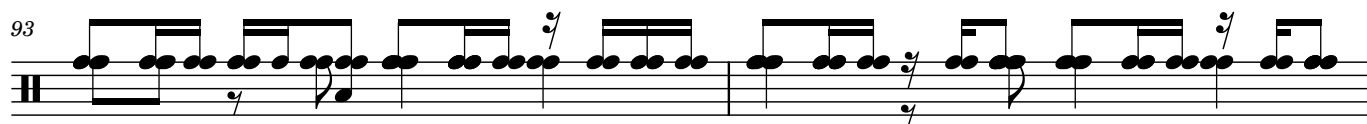
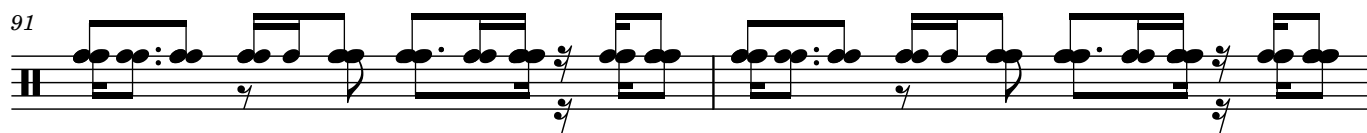
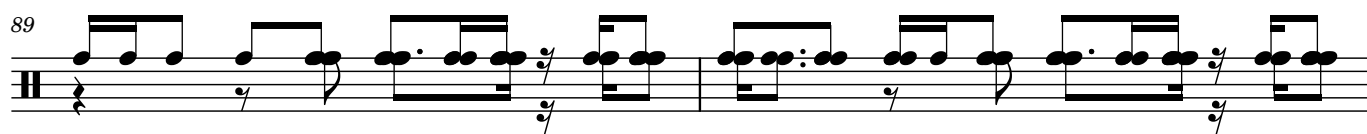
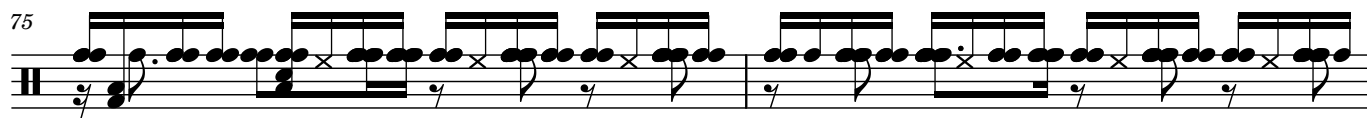
44

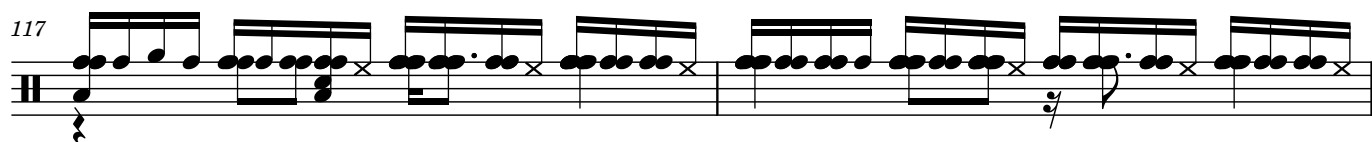
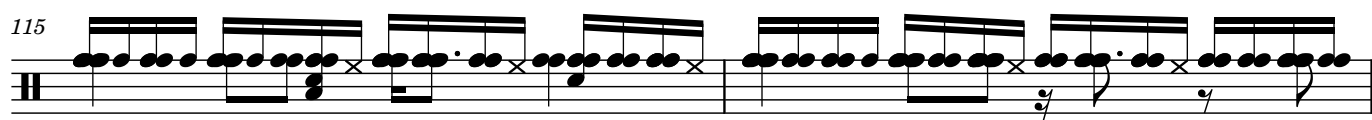
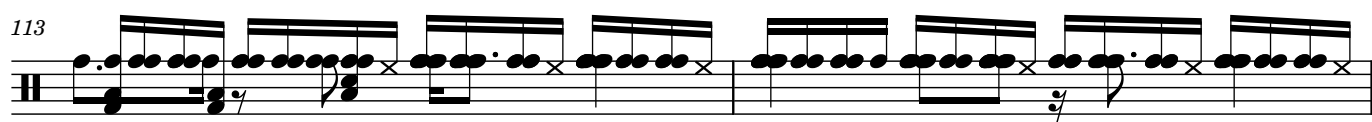


46

[illegible]







## 6

