

# Mission Select - "Instructions" (2)

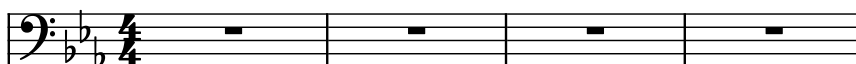
Composer: Ippo Yamada

Game: Mega Man Zero 2

[pianogame.org](http://pianogame.org)

♩ = 120

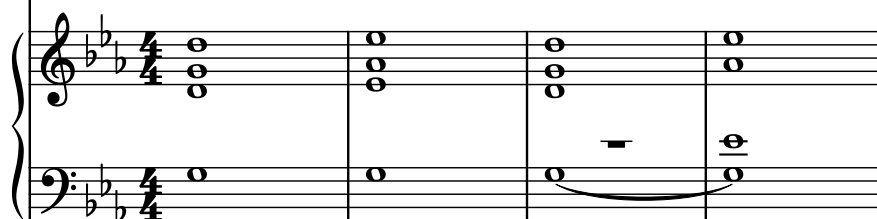
Bass Synthesizer, Electric Bass



Bass Synthesizer, Synth Bass 2 (right)



Pad Synthesizer, Warm Pad



5

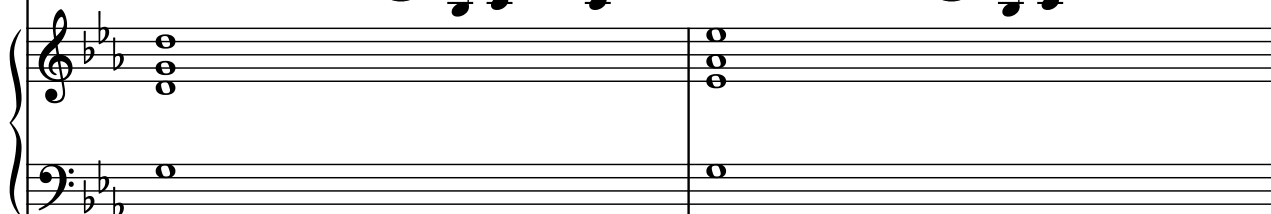
Synth.



Synth.

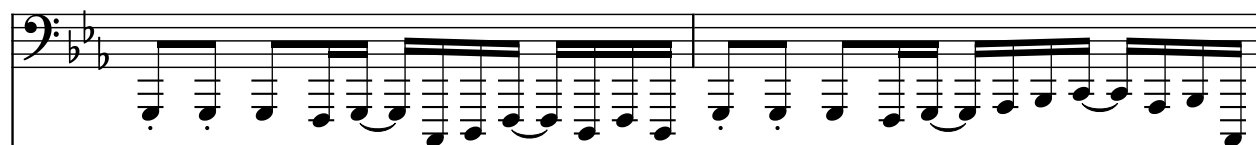


Synth.

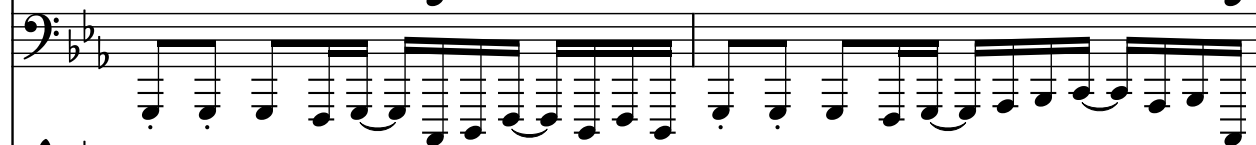


7

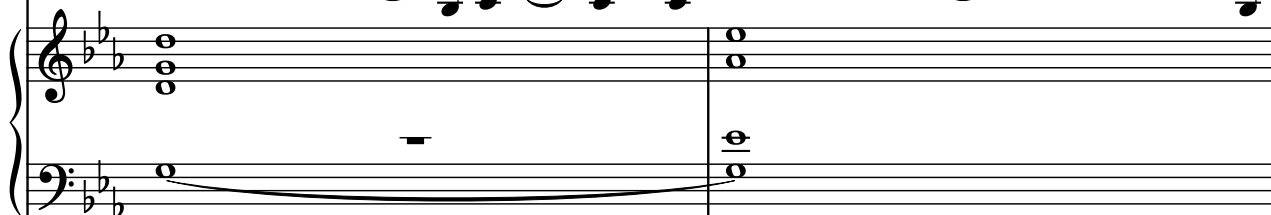
Synth.



Synth.



Synth.

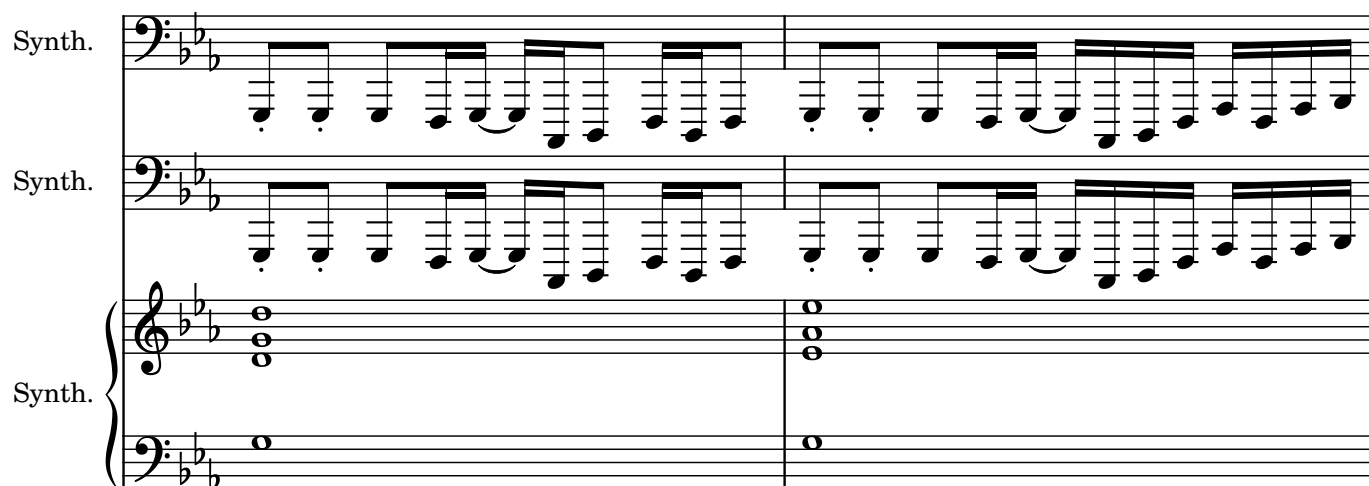


9

Synth.

Synth.

Synth.

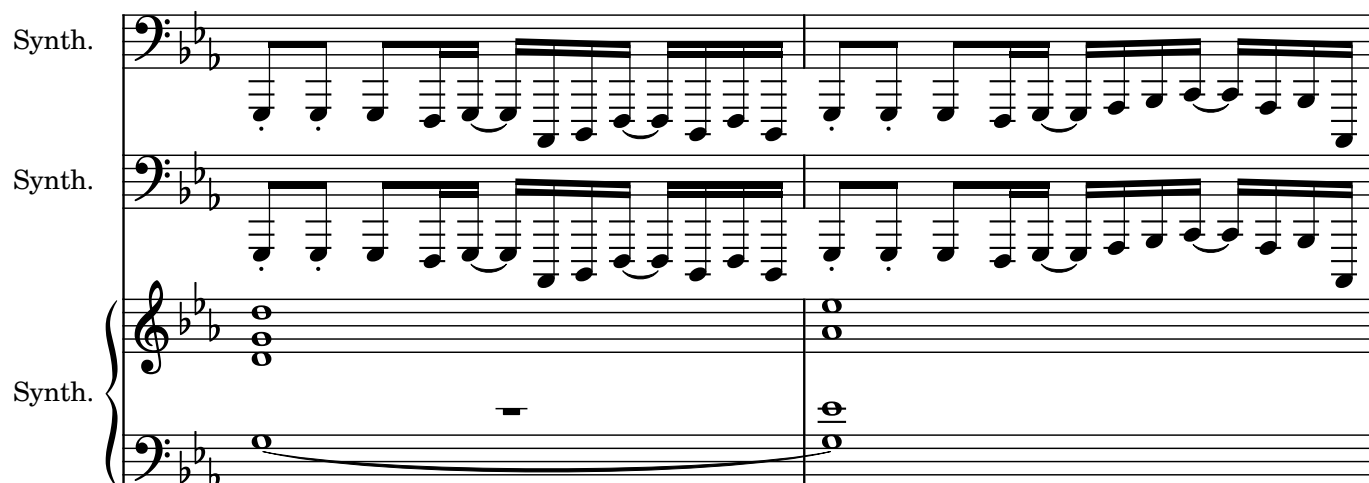


11

Synth.

Synth.

Synth.

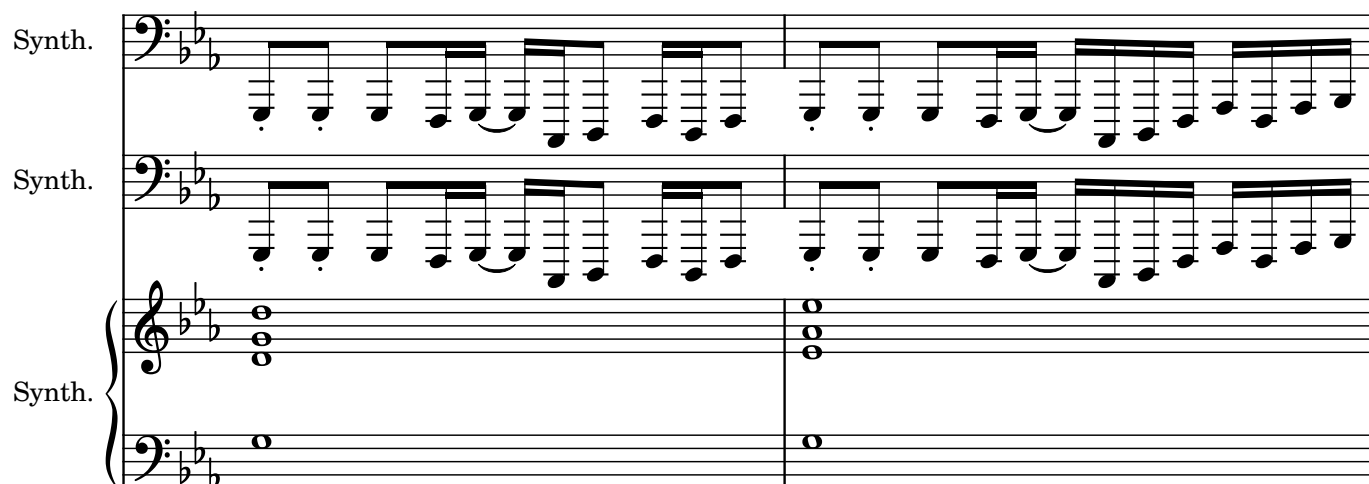


13

Synth.

Synth.

Synth.



15

Synth.

Synth.

Synth.

17

Synth.

Synth.

Synth.

19

Synth.

Synth.

Synth.

21

Synth.

Synth.

Synth.

23

Synth.

Synth.

Synth.

25

Synth.

Synth.

Synth.

27

Synth.

Synth.

Synth.

27 28 29

30

Synth.

Synth.

Synth.

30 31 32 33 34 35 36

37

Synth.

Synth.

Synth.

37 38 39 40 41 42 43

44

Synth.

Synth.

Synth.

44

47

Synth.

Synth.

Synth.

47

51

Synth.

Synth.

Synth.

51

55

Synth.

Synth.

Synth.

The musical score for measures 55 and 56 features three staves. The top two staves, both labeled 'Synth.', play a continuous sequence of eighth notes in a descending pattern. The bottom staff, also labeled 'Synth.', contains a sustained chord in the left hand and a single note in the right hand.

57

Synth.

Synth.

Synth.

The musical score for measures 57 and 58 features three staves. The top two staves, both labeled 'Synth.', play a continuous sequence of eighth notes in a descending pattern. The bottom staff, also labeled 'Synth.', contains a sustained chord in the left hand and a single note in the right hand.

59

Synth.

Synth.

Synth.

The musical score for measures 59 and 60 features three staves. The top two staves, both labeled 'Synth.', play a continuous sequence of eighth notes in a descending pattern. The bottom staff, also labeled 'Synth.', contains a sustained chord in the left hand and a single note in the right hand.



61

Synth.

Synth.

Synth.

61

63

Synth.

Synth.

Synth.

63

65

Synth.

Synth.

Synth.

65

67

Synth.

Synth.

Synth.

67 68

69

Synth.

Synth.

Synth.

69 70

71

Synth.

Synth.

Synth.

71 72

73

Synth.

Synth.

Synth.

75

Synth.

Synth.

Synth.

78

Synth.

Synth.

Synth.

85

Synth.

Synth.

Synth.

92

Synth.

Synth.

Synth.

95

Synth.

Synth.

Synth.

Synth.

Synth.

Synth.

The image shows a musical score for three synth parts. The top two parts are in bass clef with a key signature of two flats (B-flat and E-flat). Each has a single measure of a whole rest. The bottom part is a grand staff (treble and bass clef) with the same key signature. The first measure contains a whole note chord in the treble (F3, A3, C4) and a whole note in the bass (F2), which is tied to the second measure. The second measure contains a whole note chord in the treble (F3, A3, C4) and a whole note in the bass (F2).