

Level 2 (2)

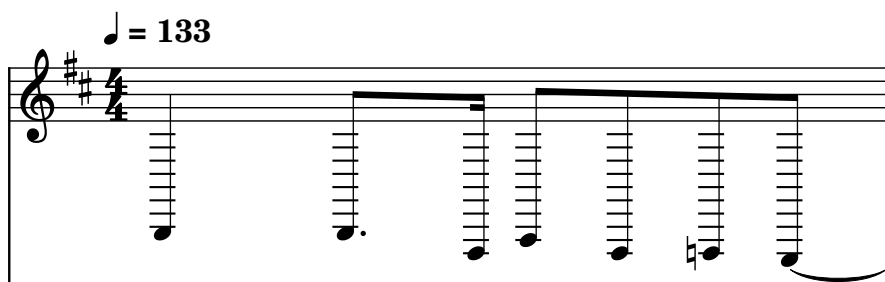
Composer: David Wise

Game: Battletoads and Double Dragon

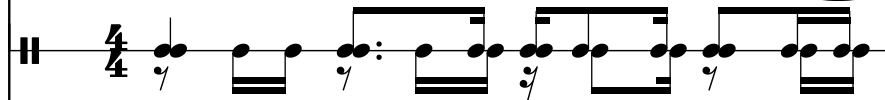
pianogame.org

♩ = 133

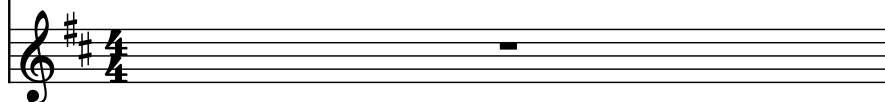
Archlute, Acoustic Guitar



Automobile Brake Drums, Percussion

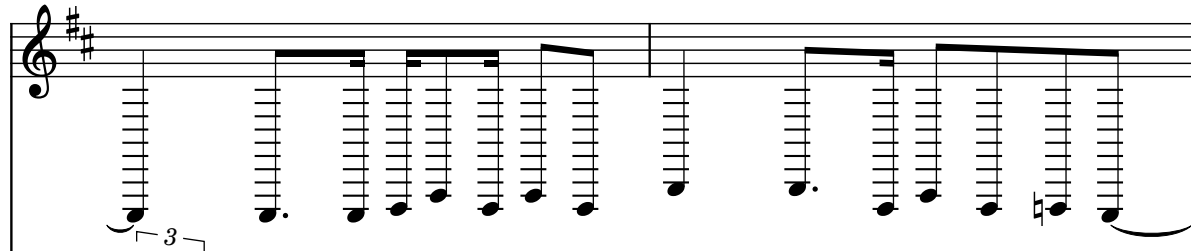


Hammond Organ, Electric Organ

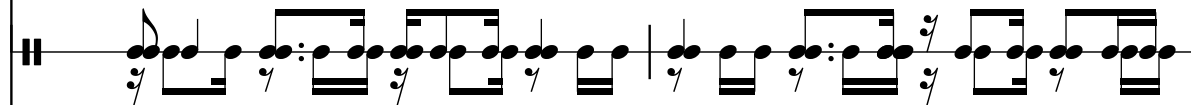


2

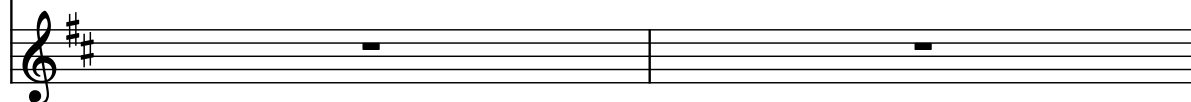
A. Lt.



Aut. Brk. Dr.

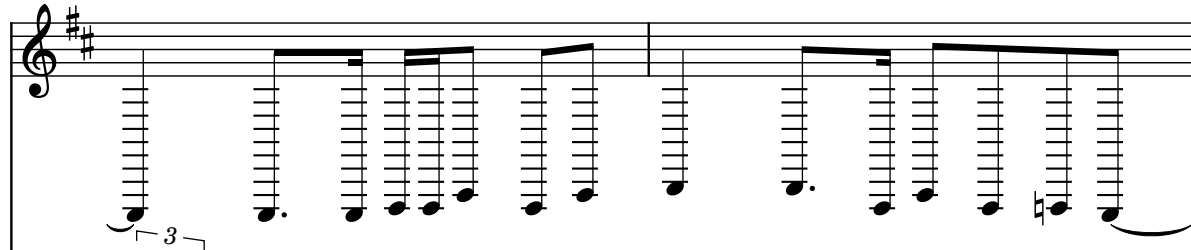


Hm. Org.

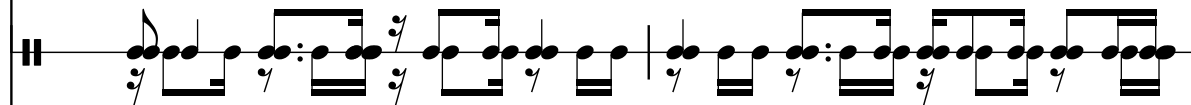


4

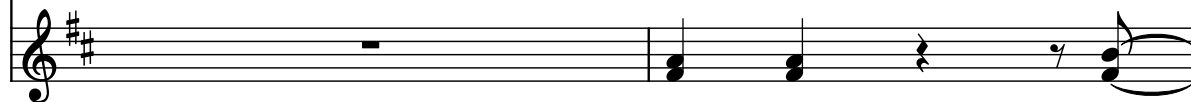
A. Lt.



Aut. Brk. Dr.



Hm. Org.



6

A. Lt.

Aut. Brk. Dr.

Hm. Org.

3

8

A. Lt.

Aut. Brk. Dr.

Hm. Org.

3

10

A. Lt.

Aut. Brk. Dr.

Hm. Org.

3

12

A. Lt.

Aut. Brk. Dr.

Hm. Org.

3

14

A. Lt.

Aut. Brk. Dr.

Hm. Org.

3

16

A. Lt.

Aut. Brk. Dr.

Hm. Org.

3

18

A. Lt.

Aut. Brk. Dr.

Hm. Org.

3

3

3

20

A. Lt.

Aut. Brk. Dr.

Hm. Org.

3

3

3

22

A. Lt.

Aut. Brk. Dr.

Hm. Org.

3

3

3

24

A. Lt.

Aut. Brk. Dr.

Hm. Org.

3

3

3

3

26

A. Lt.

Aut. Brk. Dr.

Hm. Org.

3

3

3

3

28

A. Lt.

Aut. Brk. Dr.

Hm. Org.

3

3

30

A. Lt.

Aut. Brk. Dr.

Hm. Org.

3

3

32

A. Lt.

Aut. Brk. Dr.

Hm. Org.

3

3

34

A. Lt.

Aut. Brk. Dr.

Hm. Org.

3

3

36

A. Lt.

Aut. Brk. Dr.

Hm. Org.

3

3

3

37

A. Lt.

Aut. Brk. Dr.

Hm. Org.

3

3

3

39

A. Lt.

Aut. Brk. Dr.

Hm. Org.

3

3

3

41

A. Lt.

Aut. Brk. Dr.

Hm. Org.

3

43

A. Lt.

Aut. Brk. Dr.

Hm. Org.

3

45

A. Lt.

Aut. Brk. Dr.

Hm. Org.

3

47

A. Lt.

Aut. Brk. Dr.

Hm. Org.

49

A. Lt.

Aut. Brk. Dr.

Hm. Org.

51

A. Lt.

Aut. Brk. Dr.

Hm. Org.

53

A. Lt.

Aut. Brk. Dr.

Hm. Org.

55

A. Lt.

Aut. Brk. Dr.

Hm. Org.

57

A. Lt.

Aut. Brk. Dr.

Hm. Org.

59

A. Lt.

Aut. Brk. Dr.

Hm. Org.

61

A. Lt.

Aut. Brk. Dr.

Hm. Org.

63

A. Lt.

Aut. Brk. Dr.

Hm. Org.

65

A. Lt.

Aut. Brk. Dr.

Hm. Org.

This musical score page contains measures 59 through 65. It is arranged in three systems, each with three staves: A. Lt. (top), Aut. Brk. Dr. (middle), and Hm. Org. (bottom). The key signature is two sharps (F# and C#). The A. Lt. part features a melodic line with eighth and sixteenth notes, often beamed together, and includes triplet markings (3) in measures 59, 61, 63, and 65. The Aut. Brk. Dr. part provides a rhythmic accompaniment with eighth and sixteenth notes, also featuring triplet markings. The Hm. Org. part is mostly silent, with a few notes in measures 61, 63, and 65, marked with a triplet (3). The page number 11 is in the top right corner.

67

A. Lt.

Aut. Brk. Dr.

Hm. Org.

The musical score for measures 67 and 68 features three staves. The top staff, labeled 'A. Lt.', is in treble clef with a key signature of two sharps (F# and C#). It contains a descending line of eighth notes. The middle staff, labeled 'Aut. Brk. Dr.', is in common time and features a rhythmic pattern of eighth notes. The bottom staff, labeled 'Hm. Org.', is in treble clef with a key signature of two sharps and contains a single note.

68

A. Lt.

Aut. Brk. Dr.

Hm. Org.

The musical score for measures 68 and 69 features three staves. The top staff, labeled 'A. Lt.', is in treble clef with a key signature of two sharps (F# and C#). It contains a descending line of eighth notes. The middle staff, labeled 'Aut. Brk. Dr.', is in common time and features a rhythmic pattern of eighth notes. The bottom staff, labeled 'Hm. Org.', is in treble clef with a key signature of two sharps and contains a single note.