

Stage 2 Boss

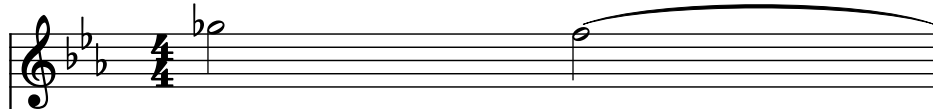
Composer: Mari Yamaguchi

Game: Super Ghouls & Ghosts

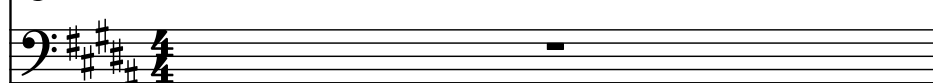
pianogame.org

♩ = 145

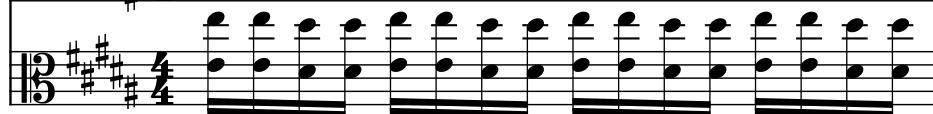
Trumpet, Super Ghouls 'n' Ghosts



Trombone, Quest 2 Boss

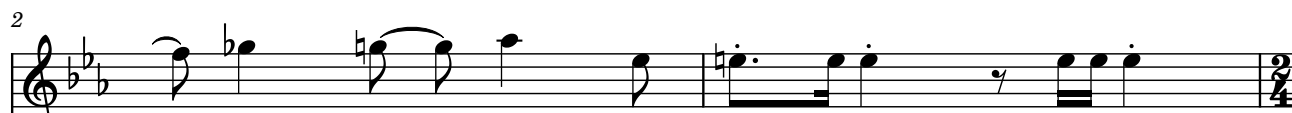


Violas (section), Sequenced by

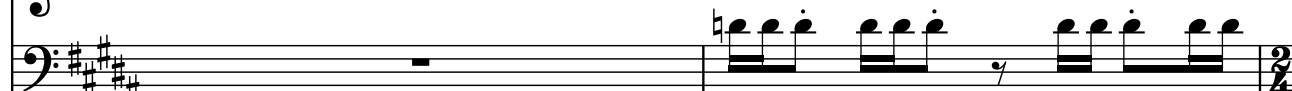


2

Tpt.



Tbn.



Vlas.



4

Tpt.



Tbn.

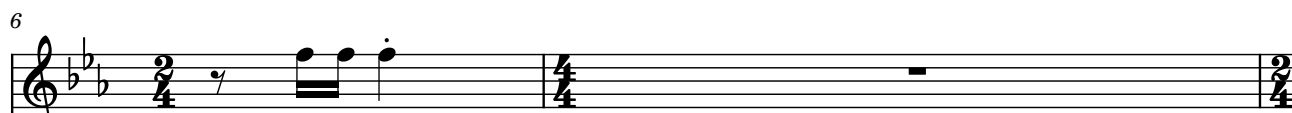


Vlas.



6

Tpt.



Tbn.

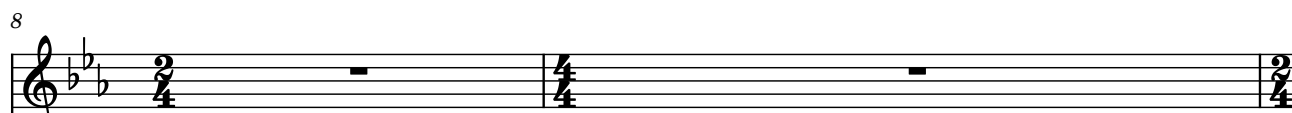


Vlas.



8

Tpt.



Tbn.



Vlas.



10

Tpt.

Tbn.

Vlas.

Measures 10-12: Tpt. (Treble clef, 2 flats, 2/4), Tbn. (Bass clef, 4 sharps, 2/4), Vlas. (Alto clef, 4 sharps, 2/4). Measures 10 and 11 show rests for Tpt. and Tbn. while Vlas. plays a continuous eighth-note pattern. Measure 12 shows all parts playing the same eighth-note pattern.

12

Tpt.

Tbn.

Vlas.

Measures 12-14: Tpt. (Treble clef, 2 flats, 2/4), Tbn. (Bass clef, 4 sharps, 2/4), Vlas. (Alto clef, 4 sharps, 2/4). Measures 12 and 13 show rests for Tpt. and Tbn. while Vlas. plays a continuous eighth-note pattern. Measure 14 shows all parts playing the same eighth-note pattern.

14

Tpt.

Tbn.

Vlas.

Measures 14-16: Tpt. (Treble clef, 2 flats, 2/4), Tbn. (Bass clef, 4 sharps, 2/4), Vlas. (Alto clef, 4 sharps, 2/4). Measures 14 and 15 show rests for Tpt. and Tbn. while Vlas. plays a continuous eighth-note pattern. Measure 16 shows all parts playing the same eighth-note pattern.

16

Tpt.

Tbn.

Vlas.

Measures 16-18: Tpt. (Treble clef, 2 flats, 2/4), Tbn. (Bass clef, 4 sharps, 2/4), Vlas. (Alto clef, 4 sharps, 2/4). Measures 16 and 17 show rests for Tpt. and Tbn. while Vlas. plays a continuous eighth-note pattern. Measure 18 shows all parts playing the same eighth-note pattern.

18

18

Tpt.

Tbn.

Vlas.

2/4 4/4 2/4

20

20

Tpt.

Tbn.

Vlas.

2/4 4/4 2/4

22

22

Tpt.

Tbn.

Vlas.

2/4 4/4 2/4

24

24

Tpt.

Tbn.

Vlas.

2/4 4/4 2/4

26

26

Tpt.

Tbn.

Vlas.

2/4 4/4 2/4

29

29

Tpt.

Tbn.

Vlas.

33

33

Tpt.

Tbn.

Vlas.

35

35

Tpt.

Tbn.

Vlas.

36

36

Tpt.

Tbn.

Vlas.

37

37

Tpt.

Tbn.

Vlas.

38

38

38

Tpt.

Tbn.

Vlas.

Measures 38-39: Tpt. has a whole rest. Tbn. plays eighth notes. Vlas. plays a complex rhythmic pattern with many beamed eighth notes.

39

39

Tpt.

Tbn.

Vlas.

Measures 39-40: Tpt. has a whole rest. Tbn. plays eighth notes. Vlas. plays a complex rhythmic pattern with many beamed eighth notes.

40

40

Tpt.

Tbn.

Vlas.

Measures 40-41: Tpt. has a whole rest. Tbn. plays eighth notes. Vlas. plays a complex rhythmic pattern with many beamed eighth notes.

41

41

Tpt.

Tbn.

Vlas.

Measures 41-42: Tpt. has a whole rest. Tbn. plays eighth notes. Vlas. plays a complex rhythmic pattern with many beamed eighth notes.

42

42

Tpt.

Tbn.

Vlas.

Measures 42-43: Tpt. has a whole rest. Tbn. plays eighth notes. Vlas. plays a complex rhythmic pattern with many beamed eighth notes.

43

Tpt.

Tbn.

Vlas.

Measures 43-44. Tpt. is silent. Tbn. and Vlas. play a rhythmic pattern of eighth notes. The key signature has two flats (Bb, Eb) and the time signature is 12/8.

44

Tpt.

Tbn.

Vlas.

Measures 44-45. Tpt. is silent. Tbn. and Vlas. play a rhythmic pattern of eighth notes. The key signature has two flats (Bb, Eb) and the time signature is 12/8.

45

Tpt.

Tbn.

Vlas.

Measures 45-46. Tpt. is silent. Tbn. and Vlas. play a rhythmic pattern of eighth notes. The key signature has two flats (Bb, Eb) and the time signature is 12/8.

46

Tpt.

Tbn.

Vlas.

Measures 46-47. Tpt. is silent. Tbn. and Vlas. play a rhythmic pattern of eighth notes. The key signature has two flats (Bb, Eb) and the time signature is 12/8.

47

Tpt.

Tbn.

Vlas.

Measures 47-48. Tpt. is silent. Tbn. and Vlas. play a rhythmic pattern of eighth notes. The key signature has two flats (Bb, Eb) and the time signature is 12/8.

[illegible]

51

Tpt.

Tbn.

Vlas.

52

53

54

52

Tpt.

Tbn.

Vlas.

53

54

55

53

Tpt.

Tbn.

Vlas.

54

Tpt.

Tbn.

Vlas.

55

56

57

58

55

55

Tpt.

Tbn.

Vlas.

56

56

56

Tpt.

Tbn.

Vlas.

57

57

57

Tpt.

Tbn.

Vlas.

58

58

58

Tpt.

Tbn.

Vlas.

59

59

59

Tpt.

Tbn.

Vlas.

60

60

60

Tpt.

Tbn.

Vlas.

Measures 60-61: Tpt. is silent. Tbn. and Vlas. play a rhythmic pattern of eighth notes. The key signature has three sharps (F#, C#, G#) and the time signature is 12/8.

61

61

Tpt.

Tbn.

Vlas.

Measures 61-62: Tpt. is silent. Tbn. and Vlas. play a rhythmic pattern of eighth notes. The key signature has three sharps (F#, C#, G#) and the time signature is 12/8.

62

62

Tpt.

Tbn.

Vlas.

Measures 62-63: Tpt. is silent. Tbn. and Vlas. play a rhythmic pattern of eighth notes. The key signature has three sharps (F#, C#, G#) and the time signature is 12/8.

63

63

Tpt.

Tbn.

Vlas.

Measures 63-64: Tpt. is silent. Tbn. and Vlas. play a rhythmic pattern of eighth notes. The key signature has three sharps (F#, C#, G#) and the time signature is 12/8.

65

65

Tpt.

Tbn.

Vlas.

Measures 65-66: Tpt. is silent. Tbn. and Vlas. play a rhythmic pattern of eighth notes. The key signature has three sharps (F#, C#, G#) and the time signature is 12/8.