

# Battle with King DeDeDe (3)

Composer: Jun Ishikawa

Game: Kirby's Dream Land

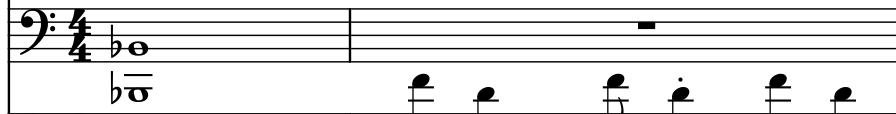
[pianogame.org](http://pianogame.org)

♩ = 175

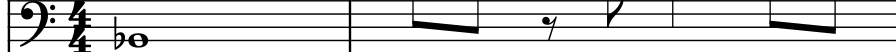
Brass Synthesizer, SYNTHBRASS



Rotary Organ, ROCK ORGAN



5-str. Electric Bass, BASS (FINGER)



3

Synth.

Rot. Org.

El. B.

5

Synth.

Rot. Org.

El. B.

7

Synth.

Rot. Org.

El. B.

9

Synth.

Rot. Org.

El. B.

11

Synth.




31


Synth. 


Rot. Org. 

El. B. 

33

Synth. 

Rot. Org. 

El. B. 

35

Synth. 

Rot. Org. 

El. B. 

37

Synth. 

Rot. Org. 

El. B. 

39

Synth. 

Rot. Org. 

El. B. 

41

Synth.

Rot. Org.

El. B.

Measures 41-42. Synth and El. B. play a rhythmic pattern of eighth notes with a key signature of one sharp (F#). Rot. Org. is silent.

43

Synth.

Rot. Org.

El. B.

Measures 43-44. Synth and El. B. play a rhythmic pattern of eighth notes with a key signature of one flat (Bb). Rot. Org. is silent.

45

Synth.

Rot. Org.

El. B.

Measures 45-46. Synth and El. B. play a rhythmic pattern of eighth notes with a key signature of one flat (Bb). Rot. Org. is silent.

47

Synth.

Rot. Org.

El. B.

Measures 47-48. Synth and El. B. play a rhythmic pattern of eighth notes with a key signature of two sharps (F#, C#). Rot. Org. is silent.

49

Synth.

Rot. Org.

El. B.

Measures 49-50. Synth and El. B. play a rhythmic pattern of eighth notes with a key signature of one sharp (F#). Rot. Org. is silent.

53

55

57

59

Synth.  
 Rot. Org.  
 El. B.

61

Synth. 

Rot. Org. 

El. B. 

63

Synth. 

Rot. Org. 

El. B. 

65

Synth. 

Rot. Org. 

El. B. 

67

Synth. 

Rot. Org. 

El. B. 

69

Synth. 

Rot. Org. 

El. B. 



71

Synth.   

Rot. Org.

El. B.

73

Synth.   

Rot. Org.

El. B.

75

Synth.   

Rot. Org.

El. B.

77

Synth.   

Rot. Org.

El. B.

79

Synth.   

Rot. Org.

El. B.

81

Synth.

Rot. Org.

El. B.

The musical score for measures 81 and 82 consists of three staves. The top staff, labeled 'Synth.', and the bottom staff, labeled 'El. B.', both play a continuous melodic line of eighth notes. This line starts in measure 81 with a key signature of one flat (Bb) and changes to one sharp (F#) in measure 82. The middle staff, labeled 'Rot. Org.', has a whole rest in measure 81 and a whole note chord in measure 82, which includes the notes G2, Bb2, and D3.

83

Synth.

Rot. Org.

El. B.

85

Synth.

Rot. Org.

El. B.

85

86

87

Synth.

Rot. Org.

El. B.

The image shows a musical score for measures 87 and 88. The score is written for three instruments: Synth., Rot. Org., and El. B. The Synth. and El. B. staves are in treble clef with a key signature of one sharp (F#). The Rot. Org. staff is in bass clef. The Synth. and El. B. staves play a continuous eighth-note pattern. The Rot. Org. staff is silent.

89

Synth.

Rot. Org.

El. B.

The musical score for measures 89-90 consists of three staves. The top staff, labeled 'Synth.', and the bottom staff, labeled 'El. B.', both use a treble clef and a key signature of one sharp (F#). They play a rhythmic pattern of eighth notes. The middle staff, labeled 'Rot. Org.', uses a bass clef and is silent throughout the measures.

91

Synth.

Rot. Org.

El. B.

[illegible]

95

Synth.

Rot. Org.

El. B.

The musical score for measures 95 and 96 consists of three staves. The top staff, labeled 'Synth.', and the bottom staff, labeled 'El. B.', both feature a continuous eighth-note melody in the bass clef. The melody starts on a sharp (F#) and follows a descending pattern: F#4, E4, D4, C4, B3, A3, G3, F#3, E3, D3, C3, B2, A2, G2, F#2, E2, D2, C2, B1, A1, G1, F#1, E1, D1, C1, B0, A0, G0, F#0, E0, D0, C0, B-1, A-1, G-1, F#-1, E-1, D-1, C-1, B-2, A-2, G-2, F#-2, E-2, D-2, C-2, B-3, A-3, G-3, F#-3, E-3, D-3, C-3, B-4, A-4, G-4, F#-4, E-4, D-4, C-4, B-5, A-5, G-5, F#-5, E-5, D-5, C-5, B-6, A-6, G-6, F#-6, E-6, D-6, C-6, B-7, A-7, G-7, F#-7, E-7, D-7, C-7, B-8, A-8, G-8, F#-8, E-8, D-8, C-8, B-9, A-9, G-9, F#-9, E-9, D-9, C-9, B-10, A-10, G-10, F#-10, E-10, D-10, C-10, B-11, A-11, G-11, F#-11, E-11, D-11, C-11, B-12, A-12, G-12, F#-12, E-12, D-12, C-12, B-13, A-13, G-13, F#-13, E-13, D-13, C-13, B-14, A-14, G-14, F#-14, E-14, D-14, C-14, B-15, A-15, G-15, F#-15, E-15, D-15, C-15, B-16, A-16, G-16, F#-16, E-16, D-16, C-16, B-17, A-17, G-17, F#-17, E-17, D-17, C-17, B-18, A-18, G-18, F#-18, E-18, D-18, C-18, B-19, A-19, G-19, F#-19, E-19, D-19, C-19, B-20, A-20, G-20, F#-20, E-20, D-20, C-20, B-21, A-21, G-21, F#-21, E-21, D-21, C-21, B-22, A-22, G-22, F#-22, E-22, D-22, C-22, B-23, A-23, G-23, F#-23, E-23, D-23, C-23, B-24, A-24, G-24, F#-24, E-24, D-24, C-24, B-25, A-25, G-25, F#-25, E-25, D-25, C-25, B-26, A-26, G-26, F#-26, E-26, D-26, C-26, B-27, A-27, G-27, F#-27, E-27, D-27, C-27, B-28, A-28, G-28, F#-28, E-28, D-28, C-28, B-29, A-29, G-29, F#-29, E-29, D-29, C-29, B-30, A-30, G-30, F#-30, E-30, D-30, C-30, B-31, A-31, G-31, F#-31, E-31, D-31, C-31, B-32, A-32, G-32, F#-32, E-32, D-32, C-32, B-33, A-33, G-33, F#-33, E-33, D-33, C-33, B-34, A-34, G-34, F#-34, E-34, D-34, C-34, B-35, A-35, G-35, F#-35, E-35, D-35, C-35, B-36, A-36, G-36, F#-36, E-36, D-36, C-36, B-37, A-37, G-37, F#-37, E-37, D-37, C-37, B-38, A-38, G-38, F#-38, E-38, D-38, C-38, B-39, A-39, G-39, F#-39, E-39, D-39, C-39, B-40, A-40, G-40, F#-40, E-40, D-40, C-40, B-41, A-41, G-41, F#-41, E-41, D-41, C-41, B-42, A-42, G-42, F#-42, E-42, D-42, C-42, B-43, A-43, G-43, F#-43, E-43, D-43, C-43, B-44, A-44, G-44, F#-44, E-44, D-44, C-44, B-45, A-45, G-45, F#-45, E-45, D-45, C-45, B-46, A-46, G-46, F#-46, E-46, D-46, C-46, B-47, A-47, G-47, F#-47, E-47, D-47, C-47, B-48, A-48, G-48, F#-48, E-48, D-48, C-48, B-49, A-49, G-49, F#-49, E-49, D-49, C-49, B-50, A-50, G-50, F#-50, E-50, D-50, C-50, B-51, A-51, G-51, F#-51, E-51, D-51, C-51, B-52, A-52, G-52, F#-52, E-52, D-52, C-52, B-53, A-53, G-53, F#-53, E-53, D-53, C-53, B-54, A-54, G-54, F#-54, E-54, D-54, C-54, B-55, A-55, G-55, F#-55, E-55, D-55, C-55, B-56, A-56, G-56, F#-56, E-56, D-56, C-56, B-57, A-57, G-57, F#-57, E-57, D-57, C-57, B-58, A-58, G-58, F#-58, E-58, D-58, C-58, B-59, A-59, G-59, F#-59, E-59, D-59, C-59, B-60, A-60, G-60, F#-60, E-60, D-60, C-60, B-61, A-61, G-61, F#-61, E-61, D-61, C-61, B-62, A-62, G-62, F#-62, E-62, D-62, C-62, B-63, A-63, G-63, F#-63, E-63, D-63, C-63, B-64, A-64, G-64, F#-64, E-64, D-64, C-64, B-65, A-65, G-65, F#-65, E-65, D-65, C-65, B-66, A-66, G-66, F#-66, E-66, D-66, C-66, B-67, A-67, G-67, F#-67, E-67, D-67, C-67, B-68, A-68, G-68, F#-68, E-68, D-68, C-68, B-69, A-69, G-69, F#-69, E-69, D-69, C-69, B-70, A-70, G-70, F#-70, E-70, D-70, C-70, B-71, A-71, G-71, F#-71, E-71, D-71, C-71, B-72, A-72, G-72, F#-72, E-72, D-72, C-72, B-73, A-73, G-73, F#-73, E-73, D-73, C-73, B-74, A-74, G-74, F#-74, E-74, D-74, C-74, B-75, A-75, G-75, F#-75, E-75, D-75, C-75, B-76, A-76, G-76, F#-76, E-76, D-76, C-76, B-77, A-77, G-77, F#-77, E-77, D-77, C-77, B-78, A-78, G-78, F#-78, E-78, D-78, C-78, B-79, A-79, G-79, F#-79, E-79, D-79, C-79, B-80, A-80, G-80, F#-80, E-80, D-80, C-80, B-81, A-81, G-81, F#-81, E-81, D-81, C-81, B-82, A-82, G-82, F#-82, E-82, D-82, C-82, B-83, A-83, G-83, F#-83, E-83, D-83, C-83, B-84, A-84, G-84, F#-84, E-84, D-84, C-84, B-85, A-85, G-85, F#-85, E-85, D-85, C-85, B-86, A-86, G-86, F#-86, E-86, D-86, C-86, B-87, A-87, G-87, F#-87, E-87, D-87, C-87, B-88, A-88, G-88, F#-88, E-88, D-88, C-88, B-89, A-89, G-89, F#-89, E-89, D-89, C-89, B-90, A-90, G-90, F#-90, E-90, D-90, C-90, B-91, A-91, G-91, F#-91, E-91, D-91, C-91, B-92, A-92, G-92, F#-92, E-92, D-92, C-92, B-93, A-93, G-93, F#-93, E-93, D-93, C-93, B-94, A-94, G-94, F#-94, E-94, D-94, C-94, B-95, A-95, G-95, F#-95, E-95, D-95, C-95, B-96, A-96, G-96, F#-96, E-96, D-96, C-96, B-97, A-97, G-97, F#-97, E-97, D-97, C-97, B-98, A-98, G-98, F#-98, E-98, D-98, C-98, B-99, A-99, G-99, F#-99, E-99, D-99, C-99, B-100, A-100, G-100, F#-100, E-100, D-100, C-100, B-101, A-101, G-101, F#-101, E-101, D-101, C-101, B-102, A-102, G-102, F#-102, E-102, D-102, C-102, B-103, A-103, G-103, F#-103, E-103, D-103, C-103, B-104, A-104, G-104, F#-104, E-104, D-104, C-104, B-105, A-105, G-105, F#-105, E-105, D-105, C-105, B-106, A-106, G-106, F#-106, E-106, D-106, C-106, B-107, A-107, G-107, F#-107, E-107

97

Synth.

Rot. Org.

El. B.

The musical score for measures 97-100 is as follows:

- Measure 97:** Synth. and El. B. play a quarter note G2, quarter note A2, quarter note B2, and quarter note C3. Rot. Org. plays a sustained chord of G2, A2, and B2.
- Measure 98:** Synth. and El. B. play a quarter note D3, quarter note E3, quarter note F#3, and quarter note G3. Rot. Org. plays a sustained chord of D3, E3, and F#3.
- Measure 99:** Synth. and El. B. play a quarter note A3, quarter note B3, quarter note C4, and quarter note D4. Rot. Org. plays a sustained chord of A3, B3, and C4.
- Measure 100:** Synth. and El. B. play a quarter note E4, quarter note F#4, quarter note G4, and quarter note A4. Rot. Org. plays a sustained chord of E4, F#4, and G4.

99

Synth.

Rot. Org.

El. B.