

Rhapsody of the Forsaken (XG)

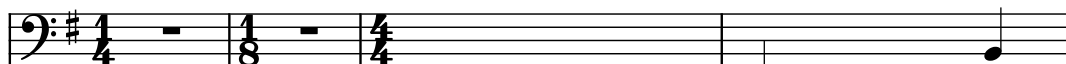
Composer: Michiru Yamane

Game: Castlevania: Order of Ecclesia

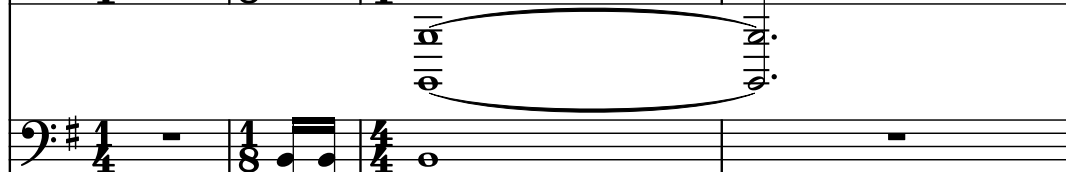
pianogame.org

♩ = 160

Bass Synthesizer, Bass



Timpani, Timpani



Chimes, Church Bell

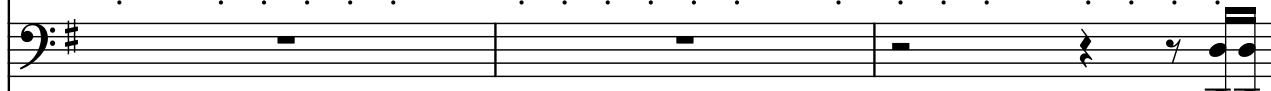


5

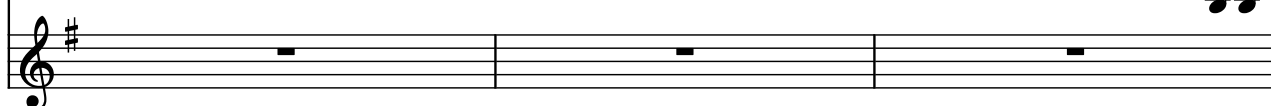
Synth.



Timp.



Cme.

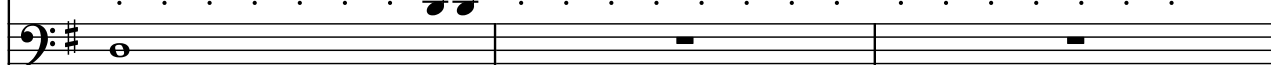


8

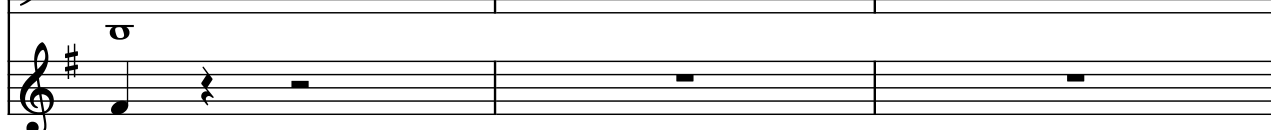
Synth.



Timp.



Cme.

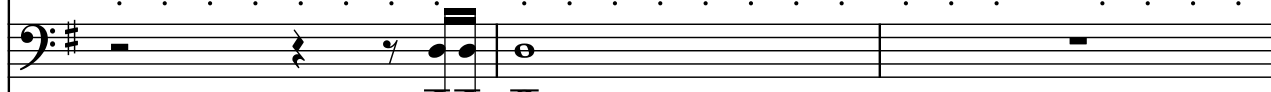


11

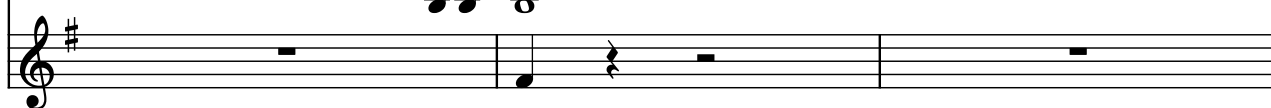
Synth.



Timp.



Cme.

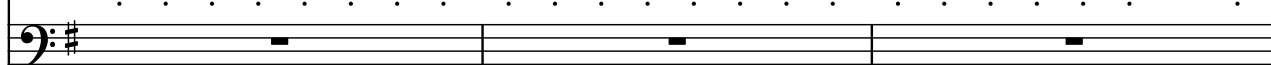


14

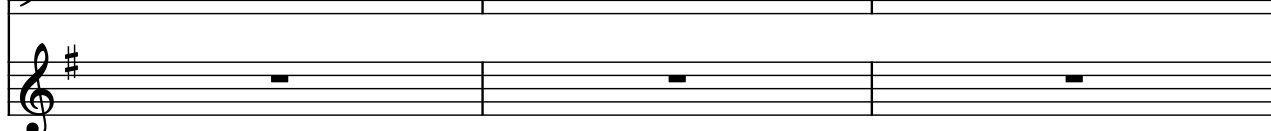
Synth.




Timp.

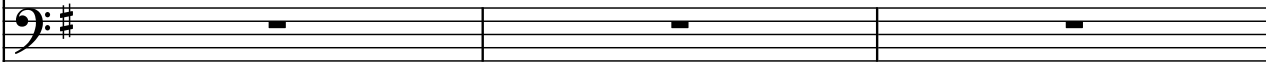


Cme.




17

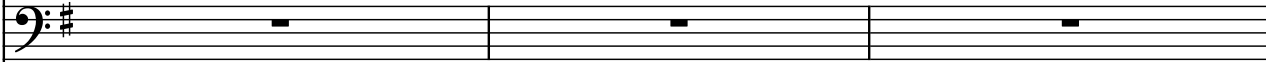
Synth. 

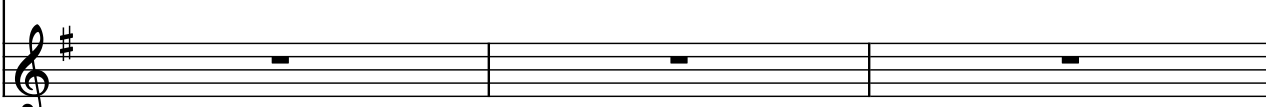
Timp. 

Cme. 


20

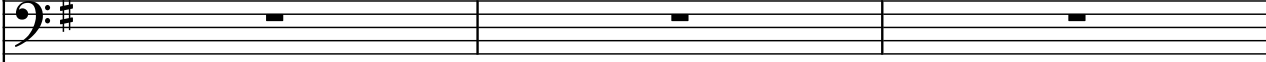
Synth. 

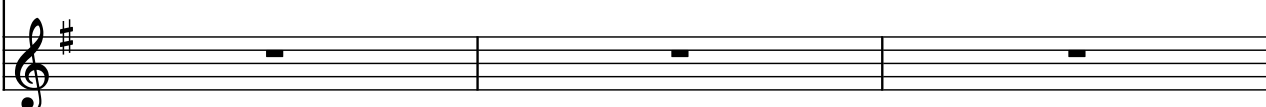
Timp. 

Cme. 


23

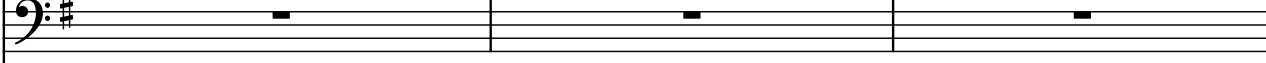
Synth. 

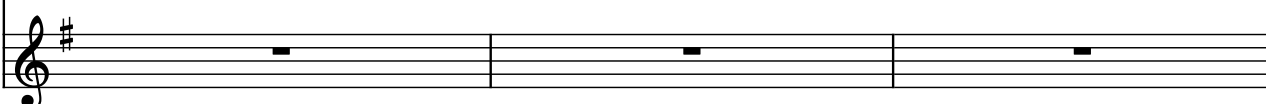
Timp. 

Cme. 


26

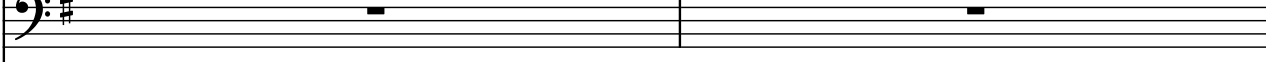
Synth. 


Timp. 

Cme. 

29

Synth. 

Timp. 

Cme. 


31


Synth. 

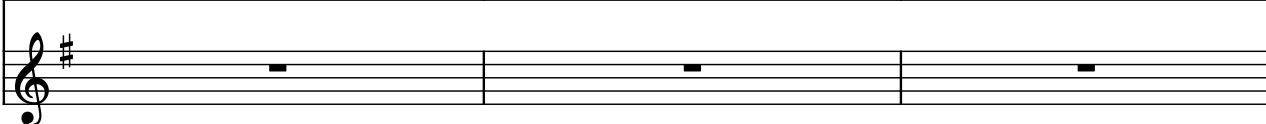
Timp. 

Cme. 


34

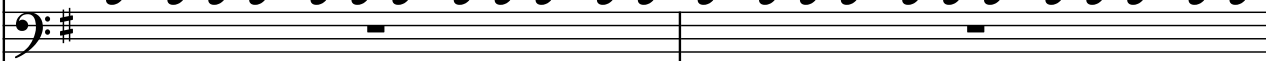
Synth. 

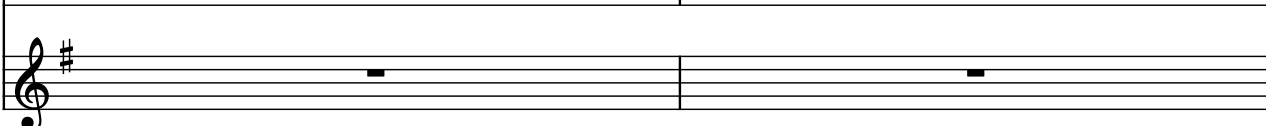
Timp. 

Cme. 

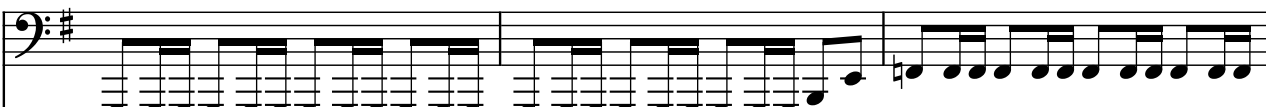
37


Synth. 

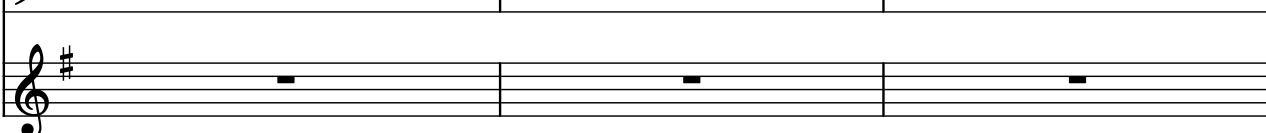
Timp. 

Cme. 


39

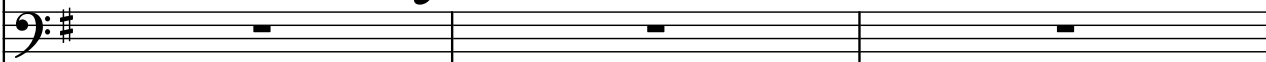
Synth. 

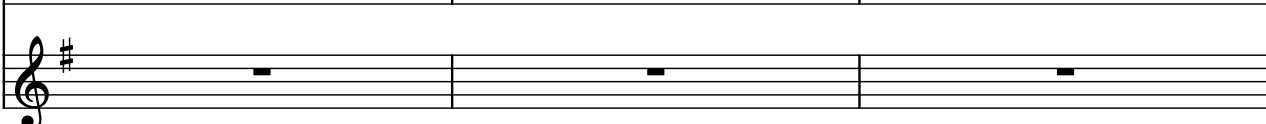
Timp. 

Cme. 


42

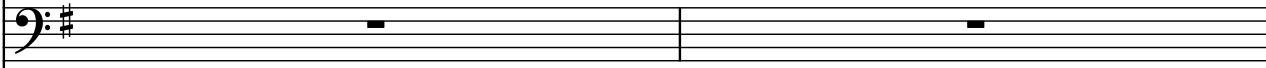
Synth. 

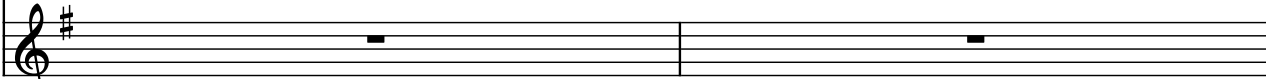
Timp. 

Cme. 


45

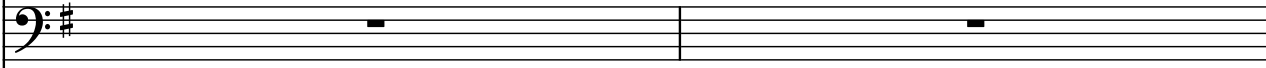
Synth. 

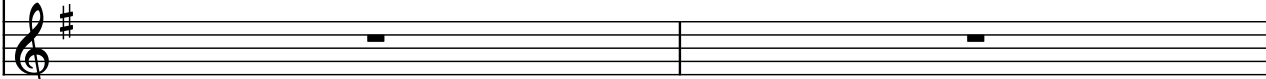
Timp. 

Cme. 


47

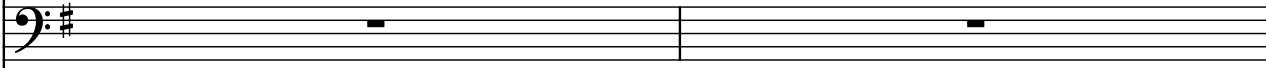
Synth. 

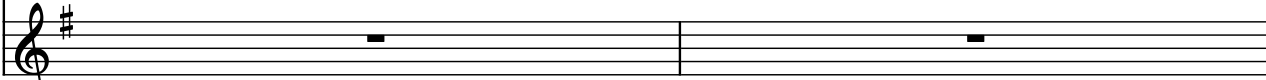
Timp. 

Cme. 


49

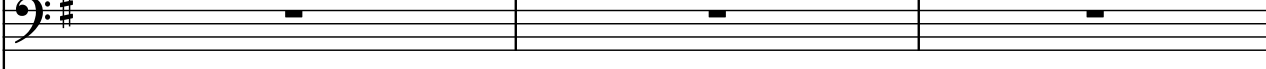
Synth. 

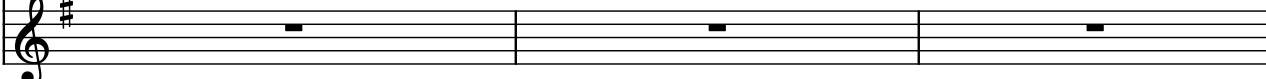
Timp. 

Cme. 


51

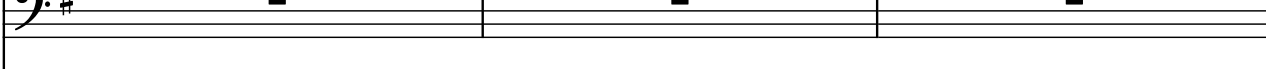
Synth. 

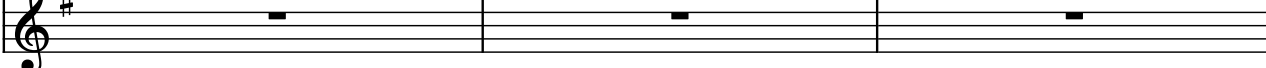
Timp. 

Cme. 


54

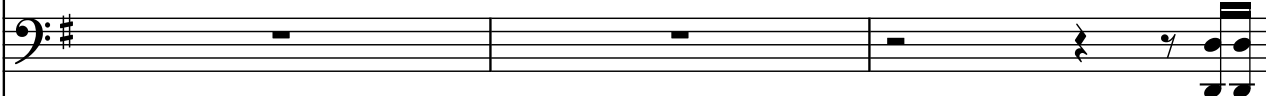
Synth. 


Timp. 

Cme. 


57

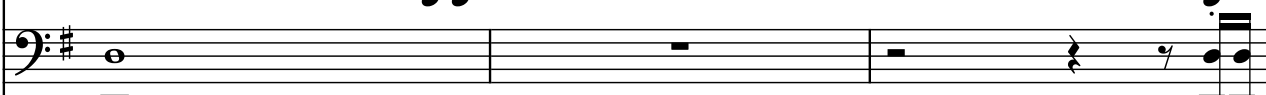
Synth. 

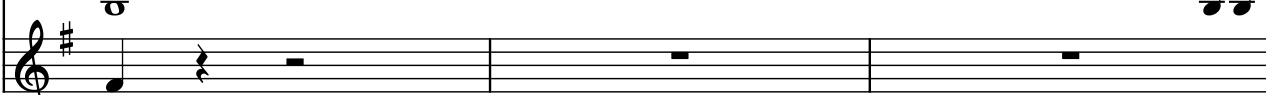
Timp. 

Cme. 

60

Synth. 

Timp. 

Cme. 

63

Synth. 

Timp. 

Cme. 


68

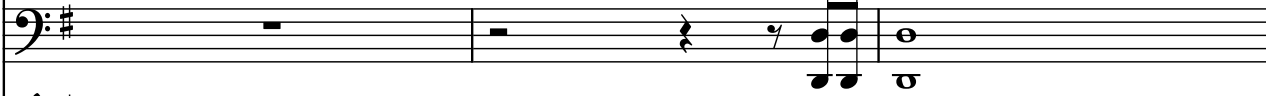
Synth. 


Timp. 

Cme. 


72


Synth. 

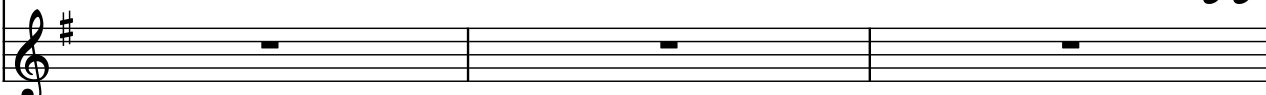
Timp. 

Cme. 


75

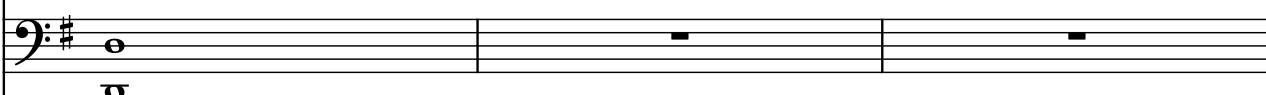
Synth. 

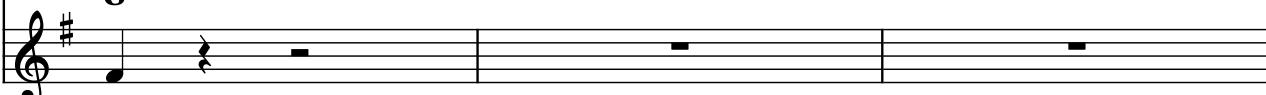
Timp. 

Cme. 


78

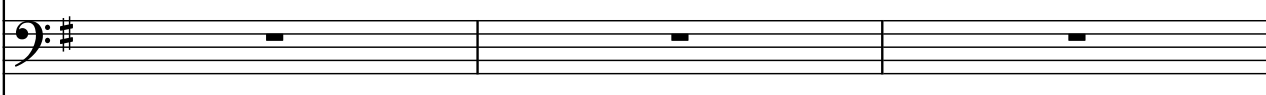
Synth. 

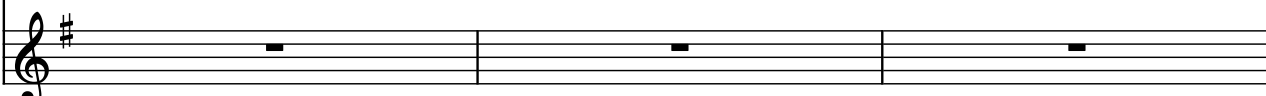
Timp. 

Cme. 


81

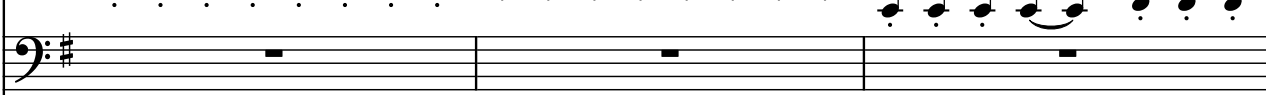
Synth. 

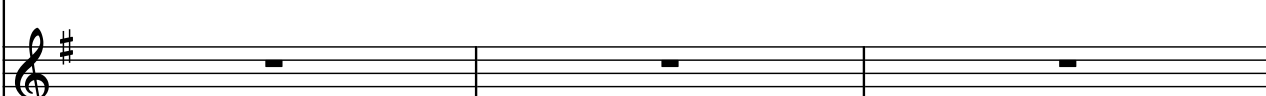
Timp. 

Cme. 


84

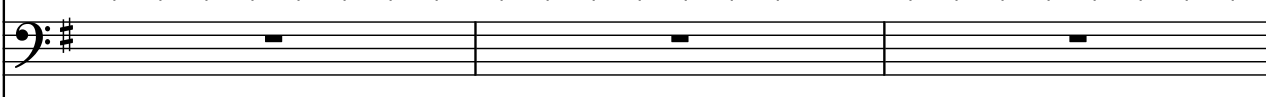
Synth. 

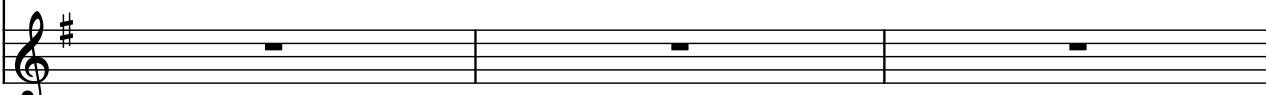
Timp. 

Cme. 


87

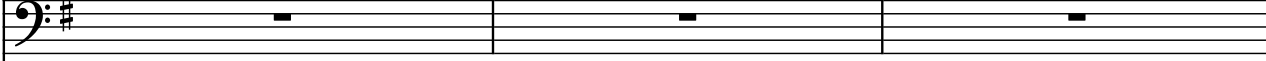
Synth. 


Timp. 

Cme. 


90

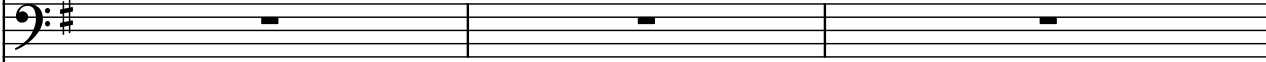
Synth. 

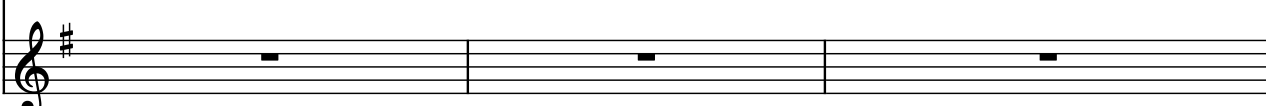
Timp. 

Cme. 


93

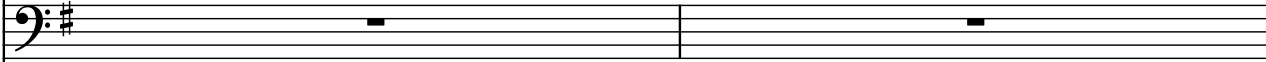
Synth. 


Timp. 

Cme. 


96

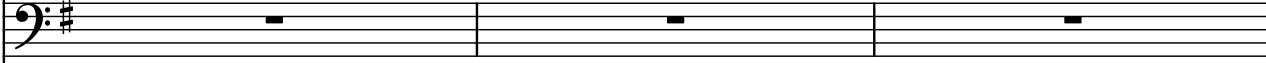
Synth. 

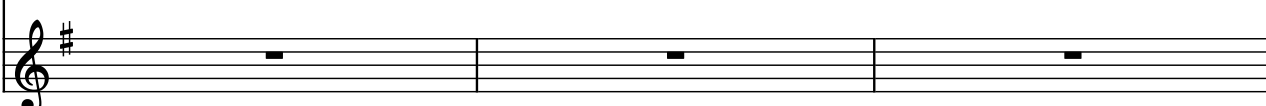
Timp. 

Cme. 


98

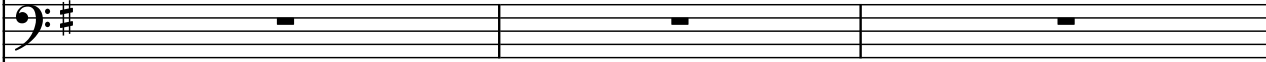
Synth. 

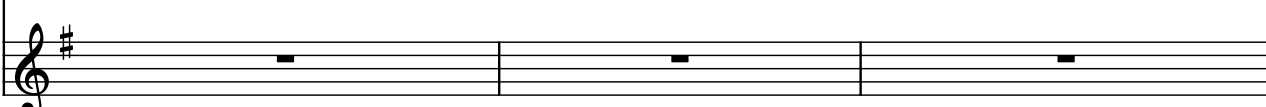
Timp. 

Cme. 


101

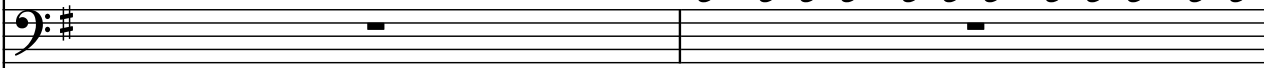
Synth. 


Timp. 

Cme. 


104

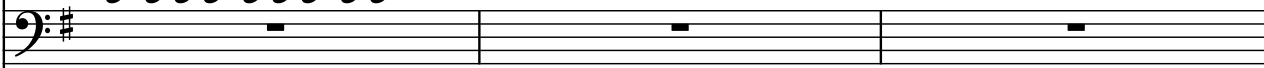
Synth. 

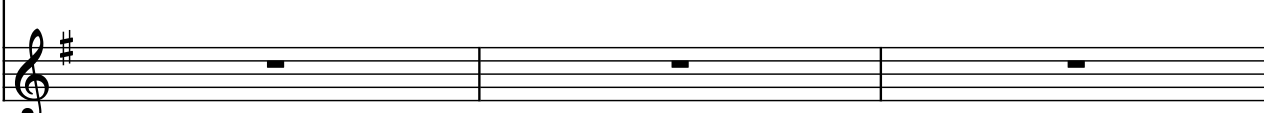
Timp. 

Cme. 


106

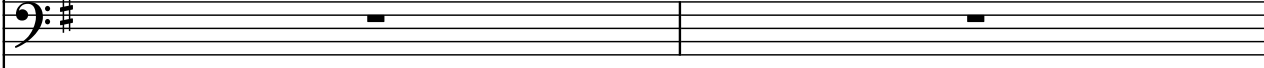
Synth. 


Timp. 

Cme. 


109

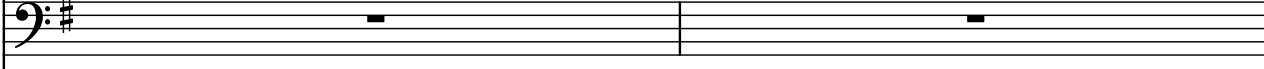
Synth. 


Timp. 

Cme. 


111

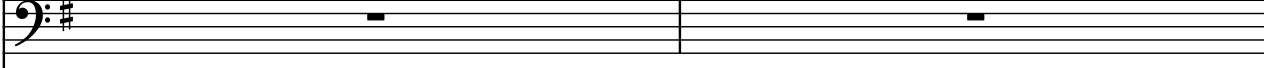
Synth. 


Timp. 

Cme. 


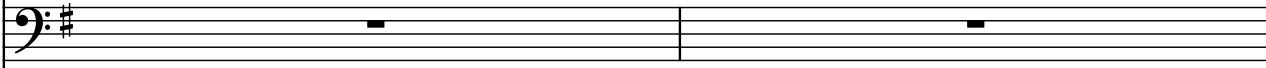
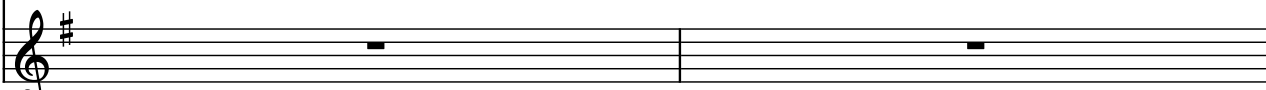
113

Synth. 


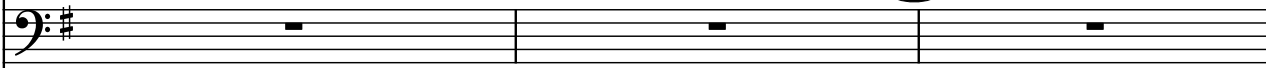
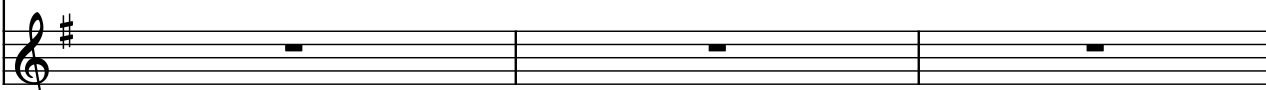
Timp. 

Cme. 


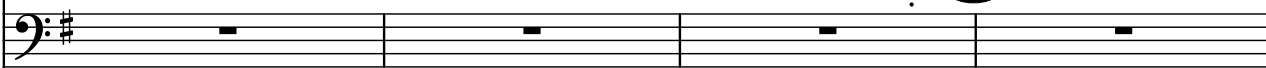
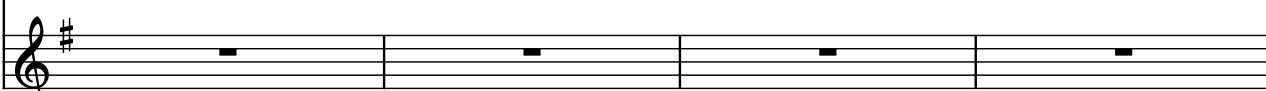
115

Synth.  Timp.  Cme. 


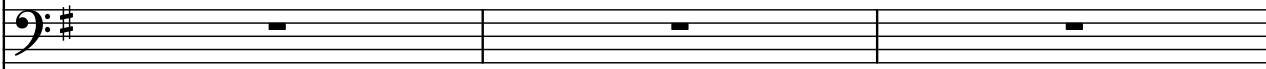
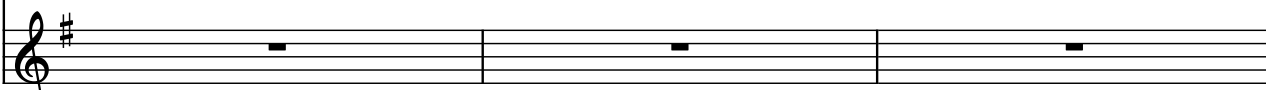
117

Synth.  Timp.  Cme. 


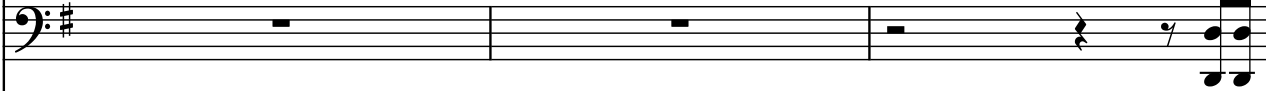
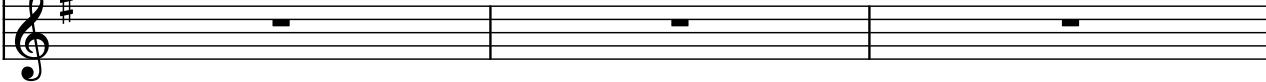
120

Synth.  Timp.  Cme. 



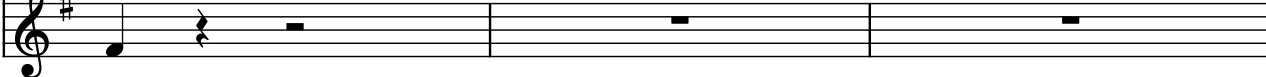
124

Synth.  Timp.  Cme. 

127

Synth.  Timp.  Cme. 

130

Synth.  Timp.  Cme. 


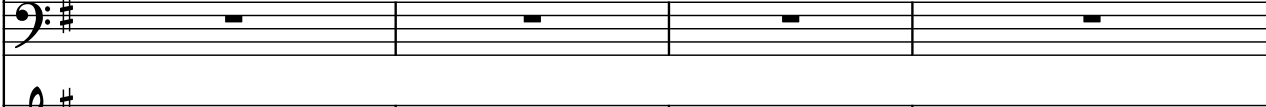
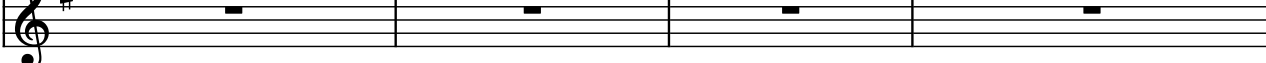
Measures 130-132. The synthesizer plays a continuous eighth-note pattern in the bass clef. The timpani and cymbal are mostly silent, with a final flourish in measure 132.

133

Synth.  Timp.  Cme. 



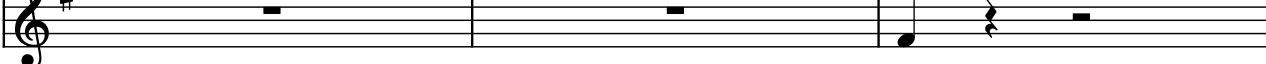
Measures 133-137. The synthesizer features a melodic line with slurs and ties. The timpani and cymbal remain silent throughout this section.

138

Synth.  Timp.  Cme. 


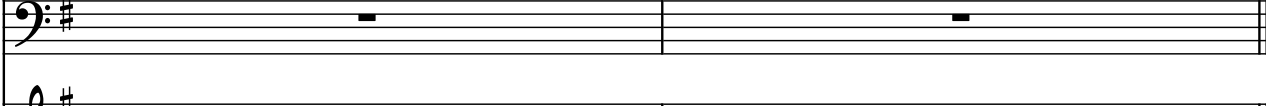
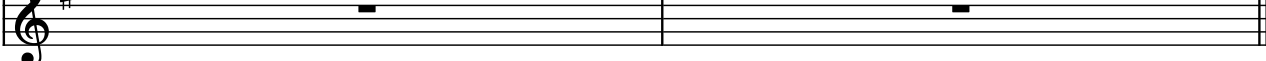
Measures 138-141. The synthesizer plays a rhythmic pattern with eighth notes and rests. The timpani and cymbal are silent.

142

Synth.  Timp.  Cme. 

Measures 142-144. The synthesizer continues with a steady eighth-note pattern. The timpani and cymbal are silent.

145

Synth.  Timp.  Cme. 

Measures 145-146. The synthesizer plays a final eighth-note pattern. The timpani and cymbal are silent.