

Nitro Man's Stage - "Nitro Rider"

Composer: Ryo Kawakami

Game: Mega Man 10

pianogame.org

♩ = 210

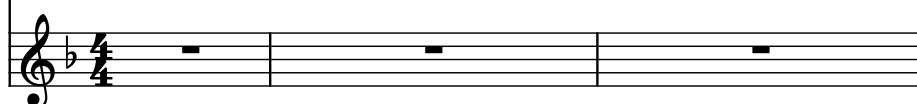
Mallet Synthesizer, Dec. 17th



Bass Synthesizer, MSGS Exclusive



Clavichord, MSGS Exclusive



4

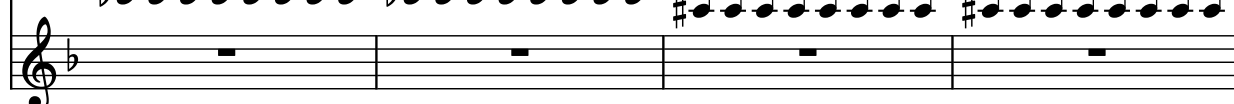
Mal. Syn.



Synth.

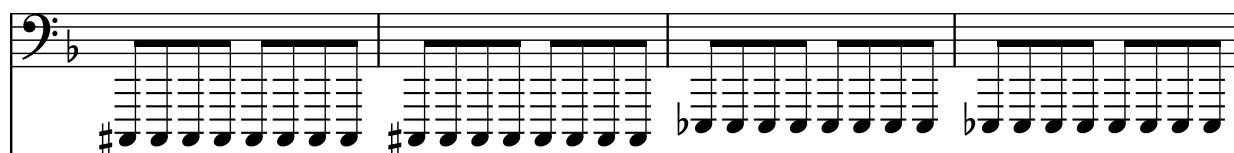


Cch.

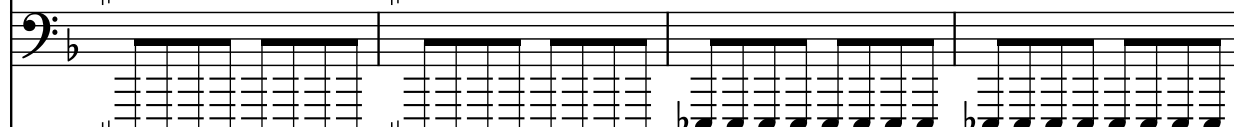


8

Mal. Syn.



Synth.



Cch.



12

Mal. Syn.



Synth.



Cch.

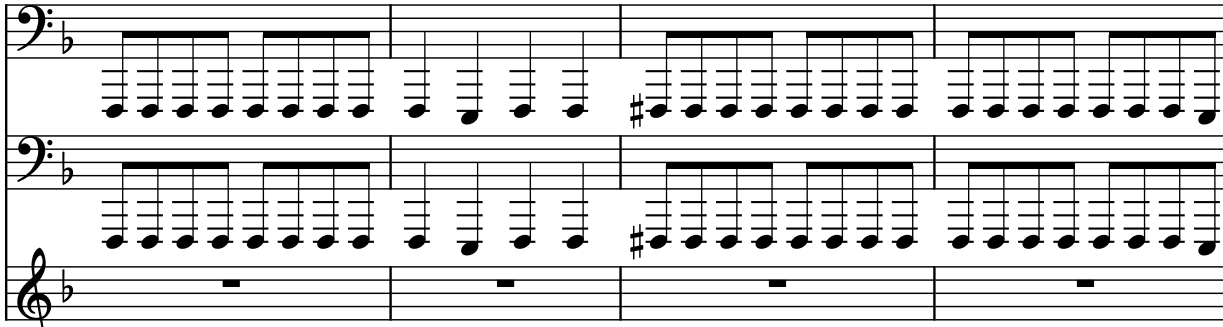


16

Mal. Syn.

Synth.

Cch.

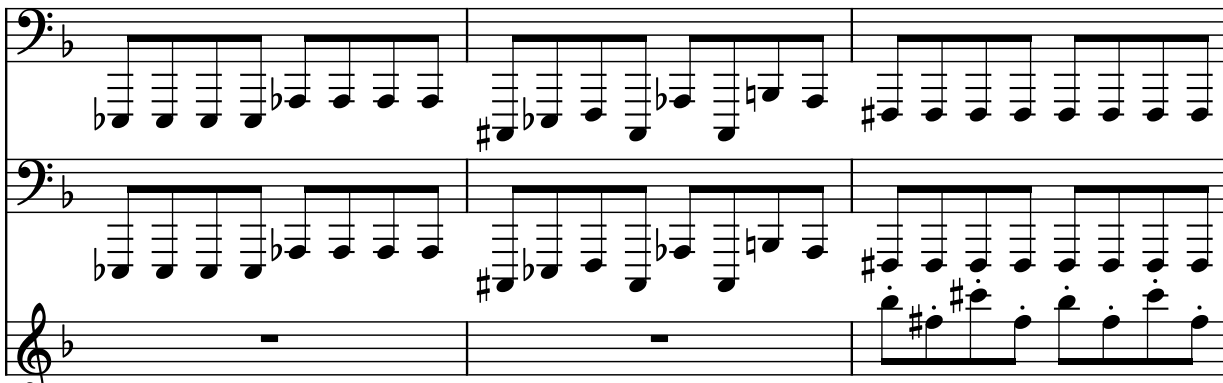


20

Mal. Syn.

Synth.

Cch.

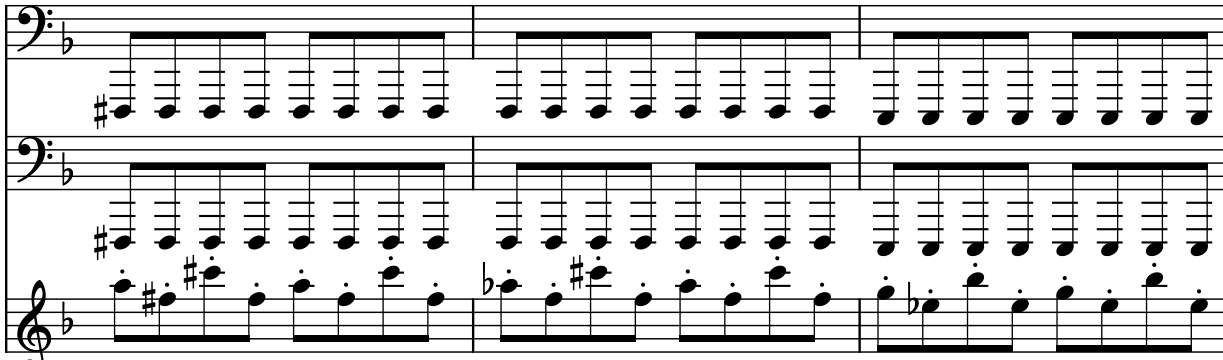


23

Mal. Syn.

Synth.

Cch.

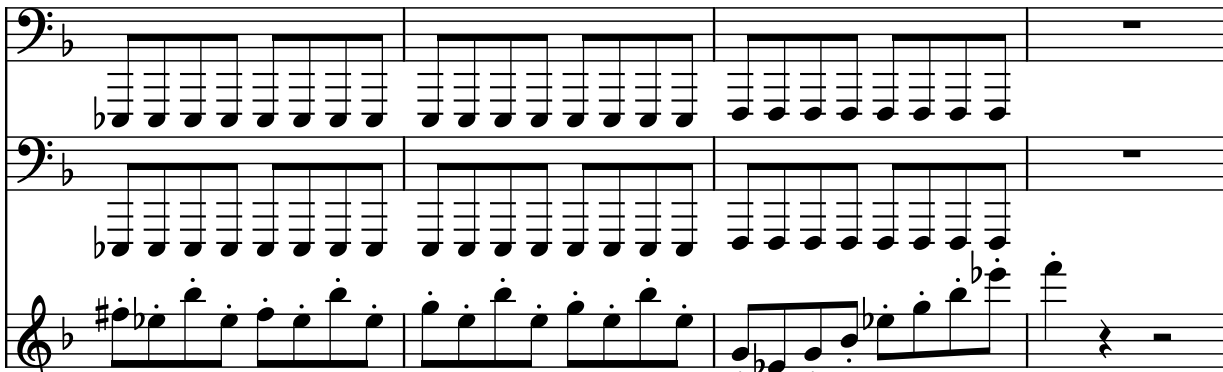


26

Mal. Syn.

Synth.

Cch.

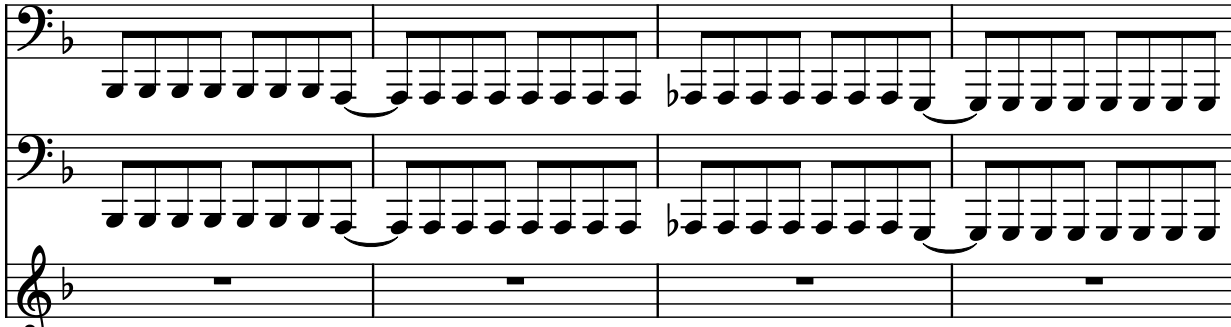


30

Mal. Syn.

Synth.

Cch.

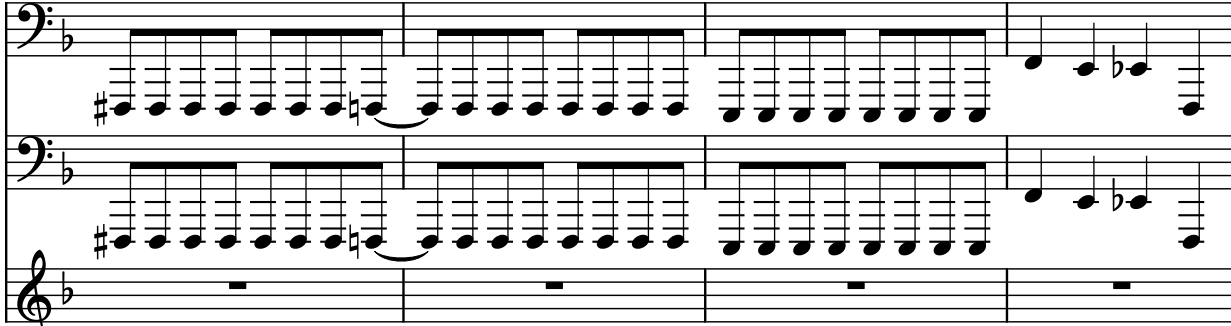


34

Mal. Syn.

Synth.

Cch.

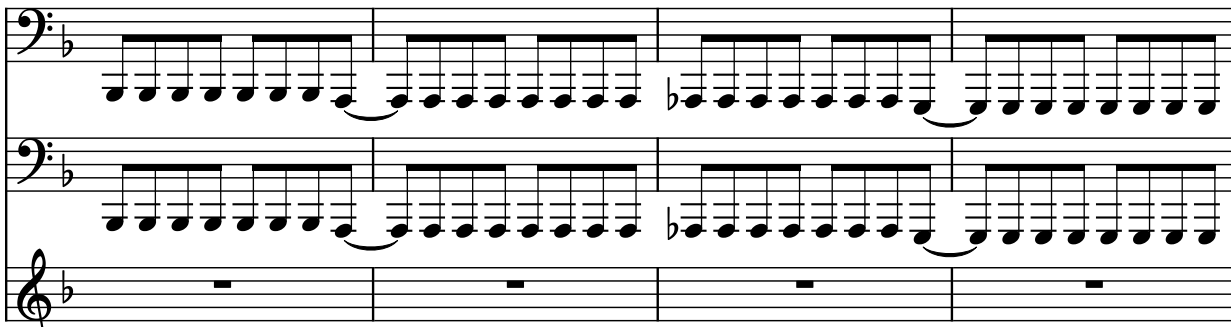


38

Mal. Syn.

Synth.

Cch.

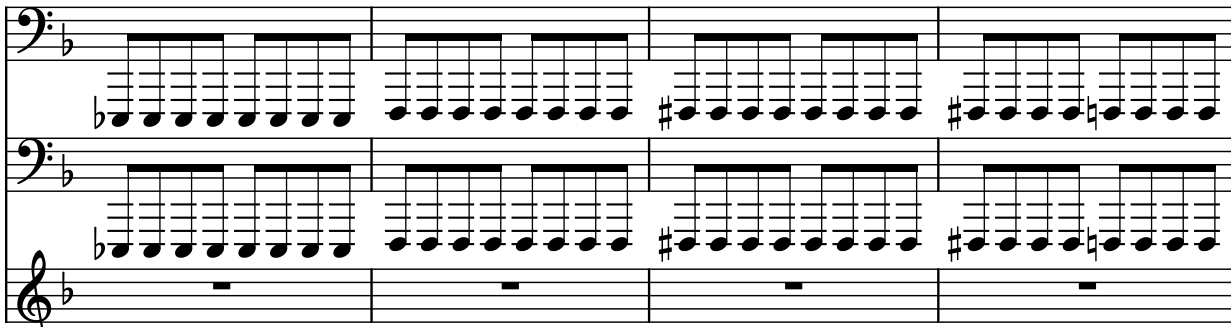


42

Mal. Syn.

Synth.

Cch.



46

Mal. Syn.

Synth.

Cch.

Measures 46-49. The Mal. Syn. and Synth. staves play continuous sixteenth-note patterns. The Cch. staff is mostly silent, with a few notes appearing in measures 48 and 49.

50

Mal. Syn.

Synth.

Cch.

Measures 50-53. The Mal. Syn. and Synth. staves continue their sixteenth-note patterns. The Cch. staff begins to play a more active role, with notes appearing in measures 52 and 53.

54

Mal. Syn.

Synth.

Cch.

Measures 54-57. The Mal. Syn. and Synth. staves continue their sixteenth-note patterns. The Cch. staff continues to play a more active role, with notes appearing in measures 56 and 57.

58

Mal. Syn.

Synth.

Cch.

Measures 58-61. The Mal. Syn. and Synth. staves continue their sixteenth-note patterns. The Cch. staff continues to play a more active role, with notes appearing in measures 60 and 61.

62

Mal. Syn.

Synth.

Cch.

62 63 64 65

66

Mal. Syn.

Synth.

Cch.

66 67 68 69

70

Mal. Syn.

Synth.

Cch.

70 71 72 73

74

Mal. Syn.

Synth.

Cch.

74 75 76 77

78

Mal. Syn.

Synth.

Cch.

Measures 78-80. The Mal. Syn. and Synth. parts are in bass clef with a key signature of one flat. They play a continuous eighth-note pattern. The Cch. part is in treble clef and has rests in measures 78 and 79, then enters in measure 80 with a series of eighth notes.

81

Mal. Syn.

Synth.

Cch.

Measures 81-83. The Mal. Syn. and Synth. parts continue their eighth-note patterns. The Cch. part continues with eighth notes, including some with accidentals.

84

Mal. Syn.

Synth.

Cch.

Measures 84-87. The Mal. Syn. and Synth. parts continue their eighth-note patterns. The Cch. part continues with eighth notes, including some with accidentals. The Mal. Syn. and Synth. parts end with rests in measure 87.

88

Mal. Syn.

Synth.

Cch.

Measures 88-91. The Mal. Syn. and Synth. parts continue their eighth-note patterns. The Cch. part has rests in measures 88, 89, and 90, then enters in measure 91 with a series of eighth notes.

92

Mal. Syn.

Synth.

Cch.

Measures 92-95. The Mal. Syn. and Synth. parts are in bass clef with a key signature of one flat. They feature a dense, continuous eighth-note pattern. The Cch. part is in treble clef and contains whole rests. The key signature changes from one flat to two flats at the end of measure 95.

96

Mal. Syn.

Synth.

Cch.

Measures 96-99. The Mal. Syn. and Synth. parts continue with the eighth-note pattern. The Cch. part remains with whole rests. The key signature is two flats.

100

Mal. Syn.

Synth.

Cch.

Measures 100-103. The Mal. Syn. and Synth. parts continue with the eighth-note pattern. The Cch. part remains with whole rests. The key signature changes from two flats to one flat at the start of measure 102.

104

Mal. Syn.

Synth.

Cch.

Measures 104-107. The Mal. Syn. and Synth. parts continue with the eighth-note pattern. The Cch. part remains with whole rests. The key signature is one flat.

108

Mal. Syn.

Synth.

Cch.

Measures 108-111. The Mal. Syn. and Synth. parts are in bass clef with a key signature of one flat, playing a continuous eighth-note pattern. The Cch. part is in treble clef, starting with rests and then playing a melodic line with eighth notes and a key signature change to two flats in measure 110.

112

Mal. Syn.

Synth.

Cch.

Measures 112-115. The Mal. Syn. and Synth. parts continue with the eighth-note pattern. The Cch. part continues its melodic line, featuring chords and a key signature change to one flat in measure 114.

116

Mal. Syn.

Synth.

Cch.

Measures 116-119. The Mal. Syn. and Synth. parts continue with the eighth-note pattern. The Cch. part continues its melodic line, featuring chords and a key signature change to one flat in measure 117.