

Final Boss (3)

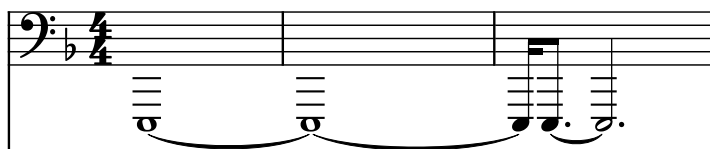
Composer: Brad Buxer

Game: Sonic the Hedgehog 3

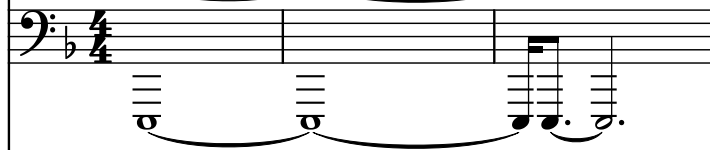
pianogame.org

♩ = 197

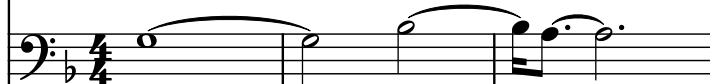
Bass Synthesizer, Synth Bass 1 (left)



Bass Synthesizer, Synth Bass (right)

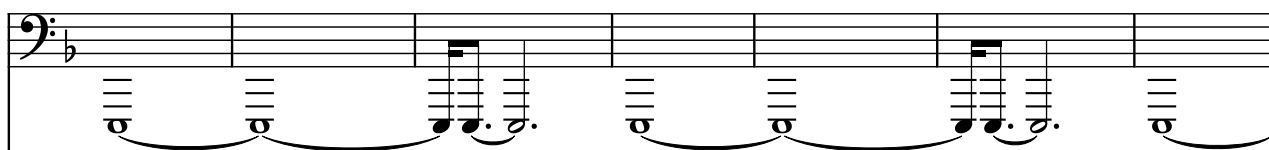


Effect Synthesizer, Bass + Lead/Synth Brass 2 (left)

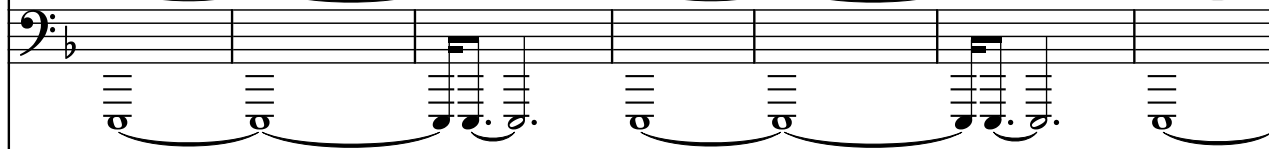


4

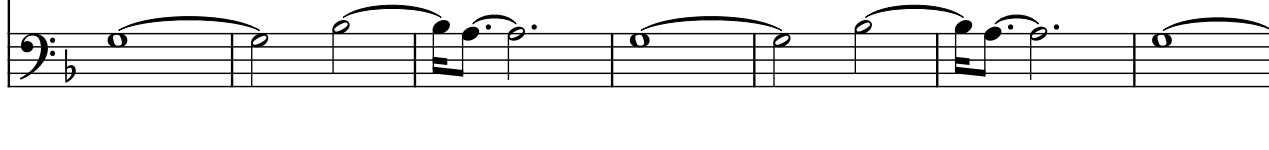
Synth.



Synth.



Synth.



11

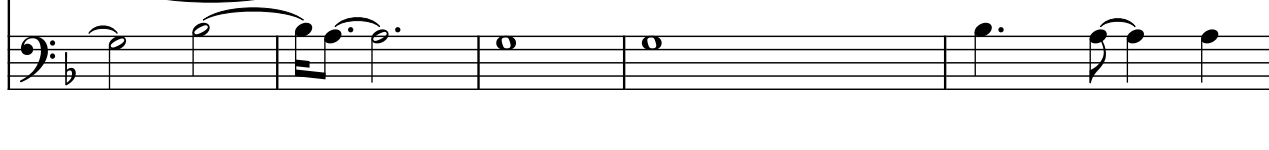
Synth.



Synth.



Synth.



16

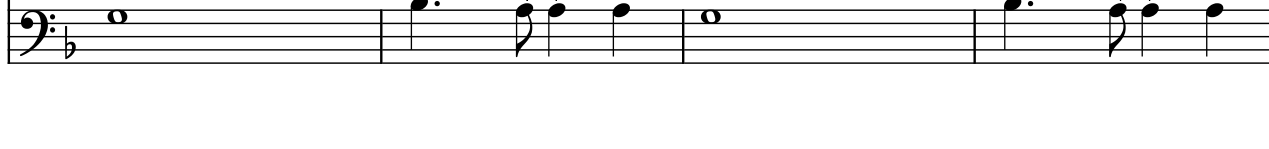
Synth.



Synth.



Synth.



20

Synth.

Three staves of music in bass clef with a key signature of one flat. The top two staves are labeled 'Synth.' and contain a continuous eighth-note arpeggiated pattern. The bottom staff contains a bass line with a whole note, a dotted quarter note, and an eighth note.

24

Synth.

Three staves of music in bass clef with a key signature of one flat. The top two staves are labeled 'Synth.' and contain a continuous eighth-note arpeggiated pattern. The bottom staff contains a bass line with a whole note, a dotted quarter note, and an eighth note.

28

Synth.

Three staves of music in bass clef with a key signature of one flat. The top two staves are labeled 'Synth.' and contain a continuous eighth-note arpeggiated pattern. The bottom staff contains a bass line with a whole note, a dotted quarter note, and an eighth note.

32

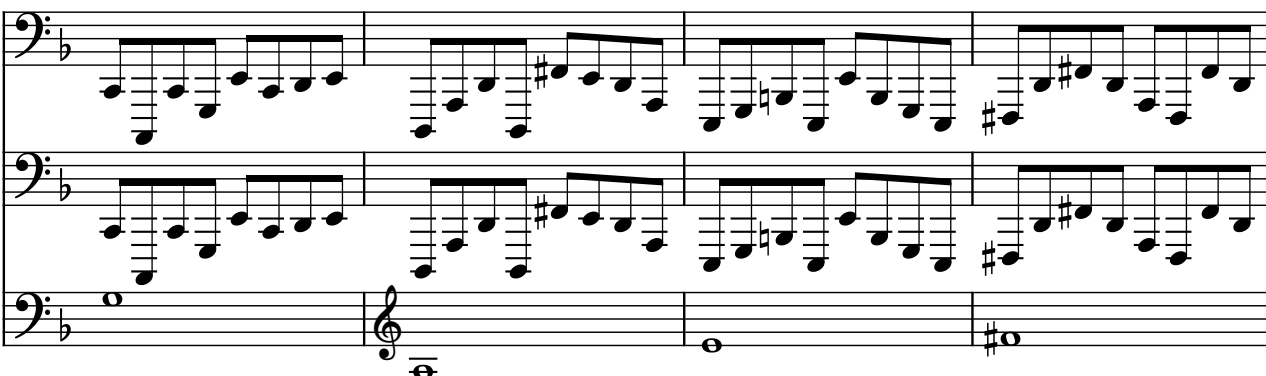
Synth.

Three staves of music in bass clef with a key signature of one flat. The top two staves are labeled 'Synth.' and contain a continuous eighth-note arpeggiated pattern. The bottom staff contains a bass line with a whole note, a dotted quarter note, and an eighth note.


37

Synth. 

41

Synth. 

45

Synth. 

50

Synth. 

54

Synth. 

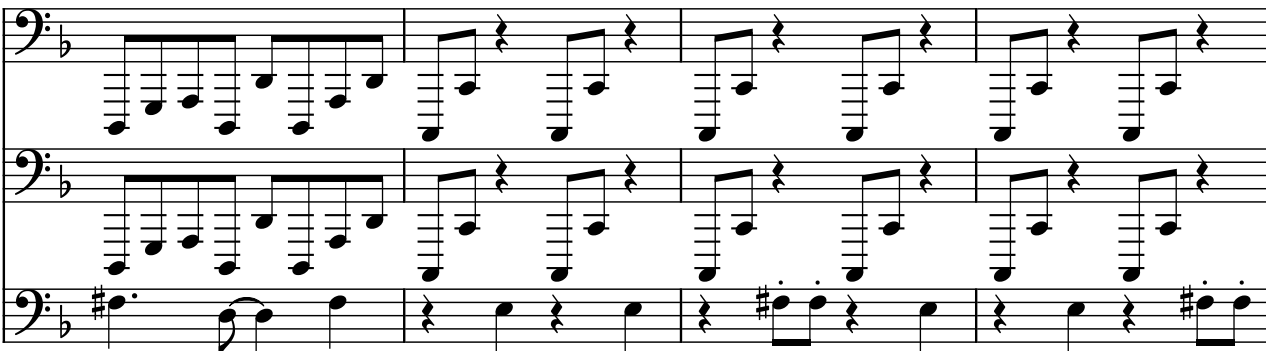
58

Synth. 

62

Synth. 

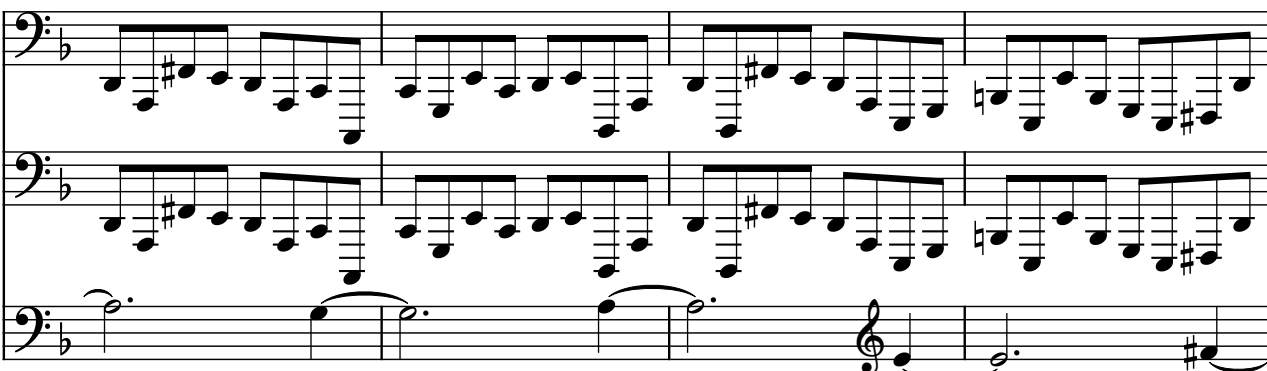
66

Synth. 

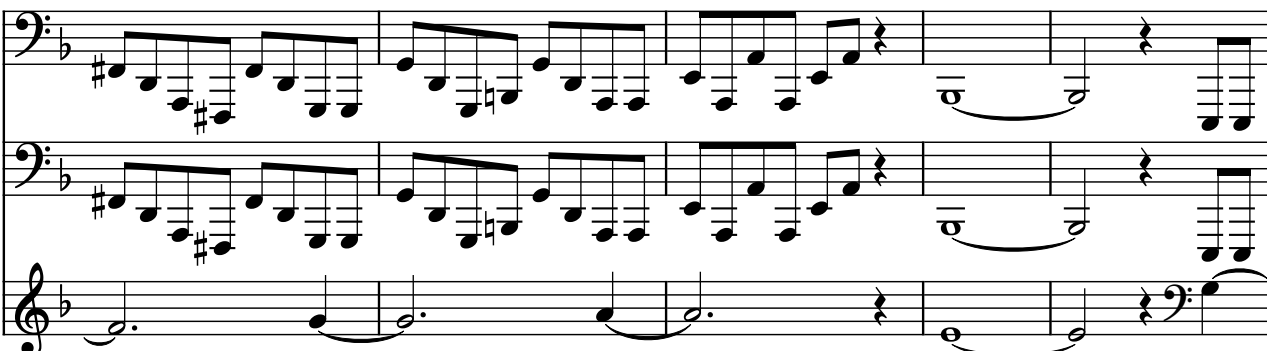
70

Synth. 

75

Synth. 

79

Synth. 

84

Synth. 

Synth.

The image shows a musical score for three synth parts, labeled 'Synth.' on the left. Each part is written on a five-line staff with a bass clef and a key signature of one flat (B-flat). The first two staves feature a dense, continuous texture of sixteenth-note chords, with the right hand playing a melodic line and the left hand providing a harmonic accompaniment. The third staff features a more sparse, melodic line with long notes and some grace notes, providing a counterpoint to the other two parts. The score is divided into four measures by vertical bar lines, and each staff ends with a double bar line.