

Elpizo's Theme - "Combustion" (2)

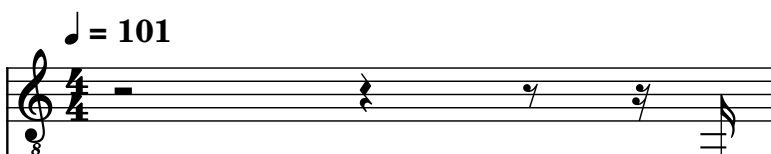
Composer: Ippo Yamada

Game: Mega Man Zero 2

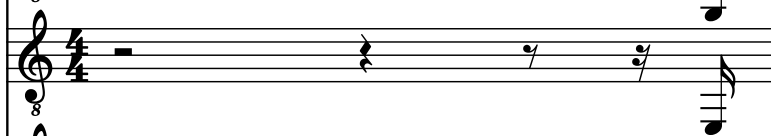
pianogame.org

♩ = 101

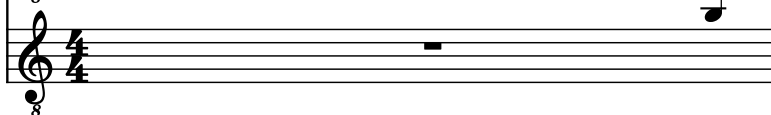
Electric Guitar, Distortion Guitar (low)



Electric Guitar, Distortion Guitar (low) (echo)



Electric Guitar, Distortion Guitar (mid) (echo)



2

El. Guit.



El. Guit.



El. Guit.



3

El. Guit.



El. Guit.



El. Guit.



4

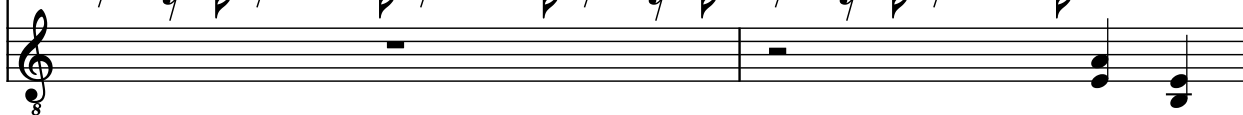
El. Guit.



El. Guit.



El. Guit.



6

El. Guit.

El. Guit.

El. Guit.

7

El. Guit.

El. Guit.

El. Guit.

7

El. Guit.

El. Guit.

El. Guit.

8

El. Guit.

El. Guit.

El. Guit.

10

El. Guit.

El. Guit.

El. Guit.

Detailed description: This system contains measures 10 and 11. Measure 10 features a guitar solo in the first staff with eighth-note triplets and a triplet of eighth notes. The second staff has a similar eighth-note pattern with slurs. The third staff provides a bass line with eighth notes and a whole rest. Measure 11 continues the patterns, with the first staff having triplets and the second staff having slurs. The third staff has a whole rest.

11

El. Guit.

El. Guit.

El. Guit.

Detailed description: This system contains measures 10 and 11. Measure 10 features a guitar solo in the first staff with eighth-note triplets and a triplet of eighth notes. The second staff has a similar eighth-note pattern with slurs. The third staff provides a bass line with eighth notes and a whole rest. Measure 11 continues the patterns, with the first staff having triplets and the second staff having slurs. The third staff has a whole rest.

12

El. Guit.

El. Guit.

El. Guit.

Detailed description: This system contains measures 12 and 13. Measure 12 features a guitar solo in the first staff with eighth-note triplets and a triplet of eighth notes. The second staff has a similar eighth-note pattern with slurs. The third staff provides a bass line with eighth notes and a whole rest. Measure 13 continues the patterns, with the first staff having triplets and the second staff having slurs. The third staff has a whole rest.

14

El. Guit.

El. Guit.

El. Guit.

15

El. Guit.

El. Guit.

El. Guit.

16

El. Guit.

El. Guit.

El. Guit.

18

El. Guit.

El. Guit.

El. Guit.

19

El. Guit.

El. Guit.

El. Guit.

20

El. Guit.

El. Guit.

El. Guit.

21

El. Guit.

El. Guit.

El. Guit.

22

El. Guit.

El. Guit.

El. Guit.

23

El. Guit.

El. Guit.

El. Guit.

24

El. Guit.

El. Guit.

El. Guit.

26

El. Guit.

El. Guit.

El. Guit.

27

El. Guit.

El. Guit.

El. Guit.

28

El. Guit.

El. Guit.

El. Guit.

30

El. Guit.

El. Guit.

El. Guit.

31

El. Guit.

El. Guit.

El. Guit.

32

El. Guit.

Three staves of musical notation for measures 32 and 33. The top staff (labeled 'El. Guit.') contains a melodic line with eighth notes and triplets, marked with an '8' and a sharp key signature. The middle staff contains a rhythmic accompaniment with eighth notes and rests, also marked with an '8'. The bottom staff contains a bass line with eighth notes and rests, marked with an '8'. Measure 32 ends with a double bar line. Measure 33 begins with a sharp key signature change and continues the melodic and rhythmic patterns.

34

El. Guit.

Three staves of musical notation for measures 34 and 35. The top staff (labeled 'El. Guit.') contains a melodic line with eighth notes and triplets, marked with an '8' and a sharp key signature. The middle staff contains a rhythmic accompaniment with eighth notes and rests, also marked with an '8'. The bottom staff contains a bass line with eighth notes and rests, marked with an '8'. Measure 34 ends with a double bar line. Measure 35 begins with a sharp key signature change and continues the melodic and rhythmic patterns.

35

El. Guit.

Three staves of musical notation for measures 35 and 36. The top staff (labeled 'El. Guit.') contains a melodic line with eighth notes and triplets, marked with an '8' and a sharp key signature. The middle staff contains a rhythmic accompaniment with eighth notes and rests, also marked with an '8'. The bottom staff contains a bass line with eighth notes and rests, marked with an '8'. Measure 35 ends with a double bar line. Measure 36 begins with a sharp key signature change and continues the melodic and rhythmic patterns.

36

El. Guit.

Three staves of musical notation for measures 36 and 37. The top staff (labeled 'El. Guit.') contains a melodic line with eighth notes and triplets, marked with a '3' and a slur. The middle staff (labeled 'El. Guit.') contains a bass line with eighth notes and triplets, marked with a '3' and a slur. The bottom staff (labeled 'El. Guit.') contains a bass line with eighth notes and triplets, marked with a '3' and a slur. The key signature is one sharp (F#).

38

El. Guit.

Three staves of musical notation for measures 38 and 39. The top staff (labeled 'El. Guit.') contains a melodic line with eighth notes and triplets, marked with a '3' and a slur. The middle staff (labeled 'El. Guit.') contains a bass line with eighth notes and triplets, marked with a '3' and a slur. The bottom staff (labeled 'El. Guit.') contains a bass line with eighth notes and triplets, marked with a '3' and a slur. The key signature is one sharp (F#).

39

El. Guit.

Three staves of musical notation for measures 39 and 40. The top staff (labeled 'El. Guit.') contains a melodic line with eighth notes and triplets, marked with a '3' and a slur. The middle staff (labeled 'El. Guit.') contains a bass line with eighth notes and triplets, marked with a '3' and a slur. The bottom staff (labeled 'El. Guit.') contains a bass line with eighth notes and triplets, marked with a '3' and a slur. The key signature is one sharp (F#).

40

El. Guit.

Three staves of musical notation for measures 40 and 41. The top staff (labeled 'El. Guit.') contains a melodic line with eighth notes and triplets, marked with a '3' and a slur. The middle staff (labeled 'El. Guit.') contains a bass line with eighth notes and triplets, marked with a '3' and a slur. The bottom staff (labeled 'El. Guit.') contains a bass line with eighth notes and triplets, marked with a '3' and a slur. The key signature has one sharp (F#).

42

El. Guit.

Three staves of musical notation for measures 42 and 43. The top staff (labeled 'El. Guit.') contains a melodic line with eighth notes and triplets, marked with a '3' and a slur. The middle staff (labeled 'El. Guit.') contains a bass line with eighth notes and triplets, marked with a '3' and a slur. The bottom staff (labeled 'El. Guit.') contains a bass line with eighth notes and triplets, marked with a '3' and a slur. The key signature has one sharp (F#).

43

El. Guit.

Three staves of musical notation for measures 43 and 44. The top staff (labeled 'El. Guit.') contains a melodic line with eighth notes and triplets, marked with a '3' and a slur. The middle staff (labeled 'El. Guit.') contains a bass line with eighth notes and triplets, marked with a '3' and a slur. The bottom staff (labeled 'El. Guit.') contains a bass line with eighth notes and triplets, marked with a '3' and a slur. The key signature has one sharp (F#).

44

El. Guit.

El. Guit.

El. Guit.

45

El. Guit.

El. Guit.

El. Guit.

46

El. Guit.

El. Guit.

El. Guit.

47

El. Guit.

El. Guit.

El. Guit.

48

El. Guit.

El. Guit.

El. Guit.

50

El. Guit.

El. Guit.

El. Guit.

51

El. Guit.

Three staves of electric guitar notation. The first staff contains a continuous eighth-note pattern with triplets. The second staff features a similar eighth-note pattern with occasional rests and slurs. The third staff has a more sparse pattern with rests and slurs. The key signature has one sharp (F#).

52

El. Guit.

Three staves of electric guitar notation. The first staff continues the eighth-note pattern with triplets. The second staff has a similar pattern with rests and slurs. The third staff has a more sparse pattern with rests and slurs. The key signature has one sharp (F#).

54

El. Guit.

Three staves of electric guitar notation. The first staff continues the eighth-note pattern with triplets. The second staff has a similar pattern with rests and slurs. The third staff has a more sparse pattern with rests and slurs. The key signature has one sharp (F#).

55

El. Guit.

El. Guit.

El. Guit.

56

El. Guit.

El. Guit.

El. Guit.

58

El. Guit.

El. Guit.

El. Guit.

59

El. Guit.

3 3 3 3

60

El. Guit.

3 3 3 3 3 3