

A Walk in the Woods (Drum Remix) (XG)

Composer: Marty O'Donnell

Game: Halo

pianogame.org

♩ = 130

5-str. Electric Bass, Electric Bass

Brass Synthesizer, Jump Brass

Automobile Brake Drums, Percussion

3

El. B.

Synth.

Aut. Brk. Dr.

6

El. B.

Synth.

Aut. Brk. Dr.

9

El. B.

Synth.

Aut. Brk. Dr.

Measures 1-2 of the score. The 5-str. Electric Bass (bass clef) plays a sequence of notes: G2, F2, E2, D2, C2, B1, A1, G1. The Brass Synthesizer (treble and bass clefs) plays a sequence of notes: G4, A4, B4, C5, D5, E5, F5, G5. The Automobile Brake Drums (percussion clef) play a sequence of notes: G4, A4, B4, C5, D5, E5, F5, G5. A triplet of eighth notes (G4, A4, B4) is marked with a '3' and a slur.

Measures 3-5 of the score. The 5-str. Electric Bass (bass clef) plays a sequence of notes: G2, F2, E2, D2, C2, B1, A1, G1. The Brass Synthesizer (treble and bass clefs) plays a sequence of notes: G4, A4, B4, C5, D5, E5, F5, G5. The Automobile Brake Drums (percussion clef) play a sequence of notes: G4, A4, B4, C5, D5, E5, F5, G5.

Measures 6-8 of the score. The 5-str. Electric Bass (bass clef) plays a sequence of notes: G2, F2, E2, D2, C2, B1, A1, G1. The Brass Synthesizer (treble and bass clefs) plays a sequence of notes: G4, A4, B4, C5, D5, E5, F5, G5. The Automobile Brake Drums (percussion clef) play a sequence of notes: G4, A4, B4, C5, D5, E5, F5, G5.

Measures 9-11 of the score. The 5-str. Electric Bass (bass clef) plays a sequence of notes: G2, F2, E2, D2, C2, B1, A1, G1. The Brass Synthesizer (treble and bass clefs) plays a sequence of notes: G4, A4, B4, C5, D5, E5, F5, G5. The Automobile Brake Drums (percussion clef) play a sequence of notes: G4, A4, B4, C5, D5, E5, F5, G5.

12

El. B.

Synth.

Aut. Brk. Dr.

15

El. B.

Synth.

Aut. Brk. Dr.

18

El. B.

Synth.

Aut. Brk. Dr.

21

El. B.

Synth.

Aut. Brk. Dr.

24

El. B.

Synth.

Aut. Brk. Dr.

24

27

El. B.

Synth.

Aut. Brk. Dr.

27

30

El. B.

Synth.

Aut. Brk. Dr.

30

33

El. B.

Synth.

Aut. Brk. Dr.

33

36

El. B.

Synth.

Aut. Brk. Dr.

Measures 36-38. El. B. (Electric Bass) starts with a quarter rest, then plays a quarter note G2, eighth notes F2 and E2, and a quarter note D2. Synth. (Synthesizer) has a sustained octave G1. Aut. Brk. Dr. (Automatic Break Drum) plays a continuous eighth-note pattern.

39

El. B.

Synth.

Aut. Brk. Dr.

Measures 39-41. El. B. (Electric Bass) has a quarter rest in measures 39 and 40, then plays a quarter note G2, eighth notes F2 and E2, and a quarter note D2. Synth. (Synthesizer) has a sustained octave G1. Aut. Brk. Dr. (Automatic Break Drum) plays a continuous eighth-note pattern.

42

El. B.

Synth.

Aut. Brk. Dr.

Measures 42-44. El. B. (Electric Bass) plays a quarter note G2, eighth notes F2 and E2, and a quarter note D2. Synth. (Synthesizer) has a sustained octave G1. Aut. Brk. Dr. (Automatic Break Drum) plays a continuous eighth-note pattern.

45

El. B.

Synth.

Aut. Brk. Dr.

Measures 45-47. El. B. (Electric Bass) plays a quarter note G2, eighth notes F2 and E2, and a quarter note D2. Synth. (Synthesizer) has a sustained octave G1. Aut. Brk. Dr. (Automatic Break Drum) plays a continuous eighth-note pattern.

48

El. B.

Synth.

Aut. Brk. Dr.

51

El. B.

Synth.

Aut. Brk. Dr.

54

El. B.

Synth.

Aut. Brk. Dr.

56

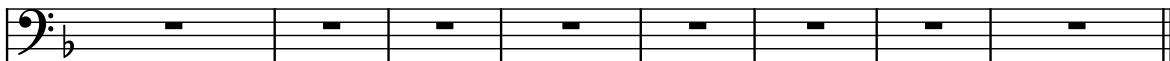
El. B.

Synth.

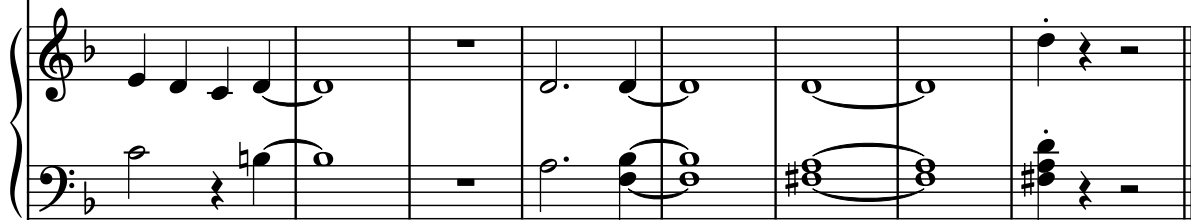
Aut. Brk. Dr.

60

El. B.



Synth.



Aut. Brk. Dr.

