

Marble Zone (10)

Composer: Masato Nakamura

Game: Sonic the Hedgehog

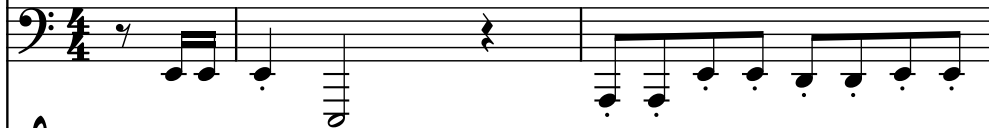
pianogame.org

♩ = 130

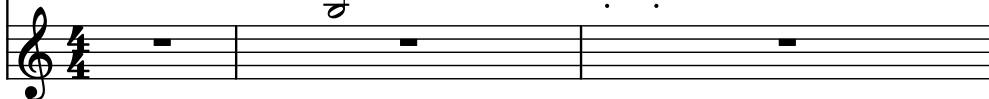
Saw Synthesizer, Sawtooth



Bass Synthesizer, SynBass2



Mallet Synthesizer, SqrWave



3

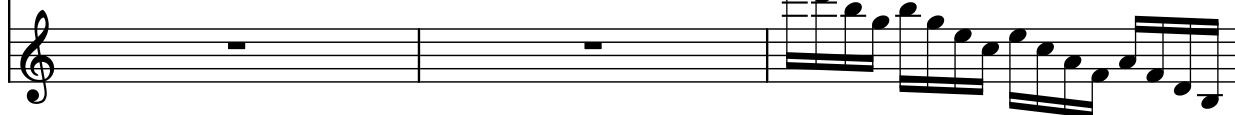
Synth.



Synth.



Mal. Syn.



6

Synth.



Synth.



Mal. Syn.



10

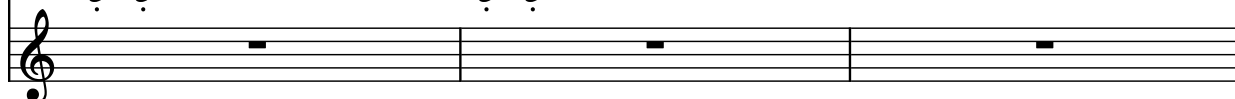
Synth.



Synth.



Mal. Syn.



13

Synth.

Synth.

Mal. Syn.

16

Synth.

Synth.

Mal. Syn.

19

Synth.

Synth.

Mal. Syn.

22

Synth.

Synth.

Mal. Syn.

25

Synth.

Synth.

Mal. Syn.

Measures 25-27. The top staff (Synth.) has a treble clef and a whole rest in measure 25, followed by eighth notes in measures 26 and 27. The middle staff (Synth.) has a bass clef and a continuous eighth-note pattern. The bottom staff (Mal. Syn.) has a treble clef and a complex eighth-note pattern in measure 25, followed by rests in measures 26 and 27.

28

Synth.

Synth.

Mal. Syn.

Measures 28-31. The top staff (Synth.) has a treble clef and a half note in measure 28, followed by eighth notes in measures 29-31. The middle staff (Synth.) has a bass clef and a continuous eighth-note pattern. The bottom staff (Mal. Syn.) has a treble clef and rests in measures 28 and 30, with eighth notes in measures 29 and 31.

32

Synth.

Synth.

Mal. Syn.

Measures 32-34. The top staff (Synth.) has a treble clef and a half note in measure 32, followed by eighth notes in measures 33-34. The middle staff (Synth.) has a bass clef and a continuous eighth-note pattern. The bottom staff (Mal. Syn.) has a treble clef and rests in measures 32 and 34, with eighth notes in measure 33.

35

Synth.

Synth.

Mal. Syn.

Measures 35-37. The top staff (Synth.) has a treble clef and a half note in measure 35, followed by eighth notes in measures 36-37. The middle staff (Synth.) has a bass clef and a continuous eighth-note pattern. The bottom staff (Mal. Syn.) has a treble clef and rests in measures 35-37.

38

Synth.

Synth.

Mal. Syn.

Measures 38-40. The top staff (Synth.) has whole rests. The middle staff (Synth.) has a sequence of eighth notes: G2, A2, B2, C3, D3, E3, F3, G3, A3, B3, C4, D4, E4, F4, G4, A4, B4, C5. The bottom staff (Mal. Syn.) has a sequence of eighth notes: G2, A2, B2, C3, D3, E3, F3, G3, A3, B3, C4, D4, E4, F4, G4, A4, B4, C5.

41

Synth.

Synth.

Mal. Syn.

Measures 41-43. The top staff (Synth.) has a whole rest. The middle staff (Synth.) has a sequence of eighth notes: G2, A2, B2, C3, D3, E3, F3, G3, A3, B3, C4, D4, E4, F4, G4, A4, B4, C5. The bottom staff (Mal. Syn.) has a sequence of eighth notes: G2, A2, B2, C3, D3, E3, F3, G3, A3, B3, C4, D4, E4, F4, G4, A4, B4, C5.