

Through Blocks

Composer: Hirokazu Ando

Game: Kirby's Block Ball

pianogame.org

♩ = 150

Clavichord, Kirby's Block Ball

Mallet Synthesizer, -

This musical system features two staves. The top staff, labeled 'Clavichord, Kirby's Block Ball', is in 4/4 time with a key signature of two flats (B-flat and E-flat). It begins with a tempo marking of ♩ = 150. The melody consists of eighth and sixteenth notes, some with accents. The bottom staff, labeled 'Mallet Synthesizer, -', contains whole rests for the first two measures.

3

Cch.

Mal. Syn.

This system continues the piece from measure 3. The 'Cch.' staff has a triplet of eighth notes in the first measure, followed by a quarter note and a half note in the second measure, and a more complex rhythmic pattern in the third measure. The 'Mal. Syn.' staff has whole rests for the first two measures, followed by a chordal figure in the third measure.

6

Cch.

Mal. Syn.

This system continues from measure 6. The 'Cch.' staff features a series of eighth and sixteenth notes with various rests. The 'Mal. Syn.' staff has a single eighth note in the first measure, followed by whole rests for the remaining two measures.

9

Cch.

Mal. Syn.

Measures 9-11: Cch. part plays a melodic line with eighth and quarter notes. Mal. Syn. part consists of whole rests.

12

Cch.

Mal. Syn.

Measures 12-14: Cch. part continues the melodic line. Mal. Syn. part consists of whole rests.

15

Cch.

Mal. Syn.

Measures 15-17: Cch. part continues the melodic line. Mal. Syn. part consists of whole rests.

18

Cch.

Mal. Syn.

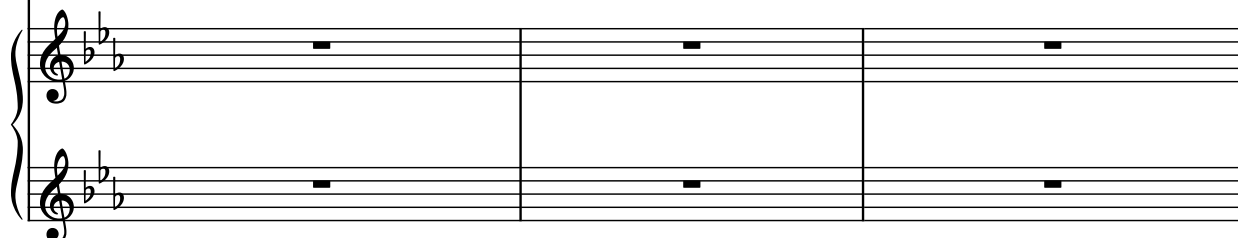
Measures 18-20: Cch. part continues the melodic line. Mal. Syn. part consists of whole rests.

21

Cch.



Mal. Syn.



24

Cch.



Mal. Syn.

