

Achacha the Great (Final Boss)

Composer: Hiroshi Kawaguchi

Game: Dynamite Dux

pianogame.org

Mallet Synthesizer, Original composer: Hiroshi Miyauchi

Mallet Synthesizer, joaobuaes@zipmail.com.br

Musical score for "The Rose Tree" in 4/4 time, marked $\text{♩} = 200$. The score is for three parts: Bass, Treble, and a lower Bass part. The key signature is three flats (B-flat, E-flat, A-flat). The melody is primarily in the Treble clef, featuring triplet eighth notes. The Bass clef part provides a harmonic accompaniment, also using triplet eighth notes. The lower Bass clef part is mostly silent, indicated by a whole rest.

The image shows a musical score for a piece titled "Mal. Syn.". The score is written for piano and a Mal. Syn. (likely a Malayan Synthesizer or similar electronic instrument). The piano part is written on two staves, bass and treble, both in G-flat major (two flats) and 4/4 time. The Mal. Syn. part is written on a single bass staff, also in G-flat major. The piano part features complex rhythmic patterns, including triplets and sixteenth notes. The Mal. Syn. part consists of rests in all three measures.

Measure 1: The piano part begins with a triplet of eighth notes in the bass staff, followed by a triplet of eighth notes in the treble staff. The Mal. Syn. part has a whole rest.

Measure 2: The piano part continues with a triplet of eighth notes in the bass staff, followed by a triplet of eighth notes in the treble staff. The Mal. Syn. part has a whole rest.

Measure 3: The piano part continues with a triplet of eighth notes in the bass staff, followed by a triplet of eighth notes in the treble staff. The Mal. Syn. part has a whole rest.

5

Mal. Syn.

Mal. Syn.

The image shows a musical score for a piece titled "Mal. Syn.". It consists of three staves. The top staff is in bass clef, the middle staff is in treble clef, and the bottom staff is in bass clef. All three staves are in the key of B-flat major (two flats). The music is written in 4/4 time. The top staff begins with a whole rest followed by a triplet of eighth notes. The middle staff begins with a triplet of eighth notes. The bottom staff begins with a triplet of eighth notes. There are several triplet markings throughout the score, including a large triplet bracket over the first measure of the top staff. A large brace on the left side of the staves groups them together.

7

Mal. Syn.

Mal. Syn.

9

Mal. Syn.

Mal. Syn.

12

Mal. Syn.

Mal. Syn.

14

Mal. Syn.

Mal. Syn.

16

Mal. Syn.

Mal. Syn.

21

Mal. Syn.

Mal. Syn.

23

Mal. Syn.

Mal. Syn.

25

Mal. Syn.

Mal. Syn.

28

Mal. Syn.

Mal. Syn.

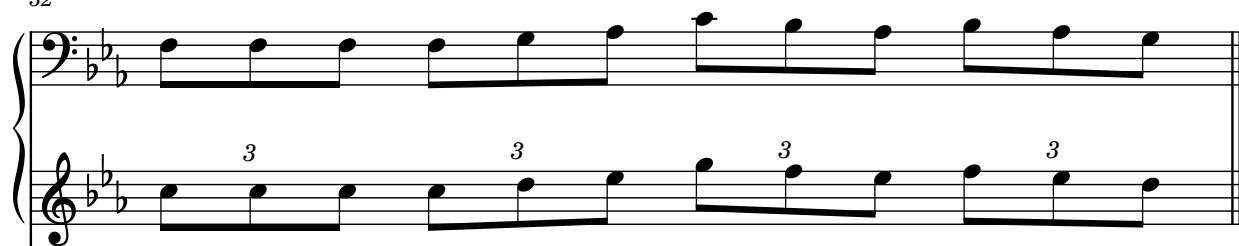
30

Mal. Syn.

Mal. Syn.

32

Mal. Syn.



Mal. Syn.

