

Crystal Snail's Stage (3)

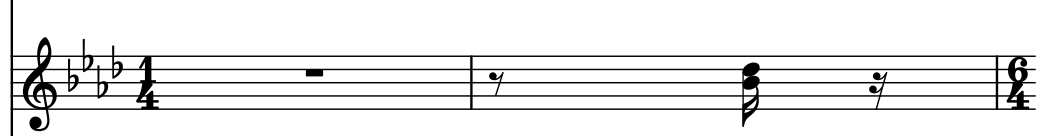
Composer: Yuki Iwai

Game: Mega Man X2

pianogame.org

♩ = 125

Bass Guitar, Electric Bass

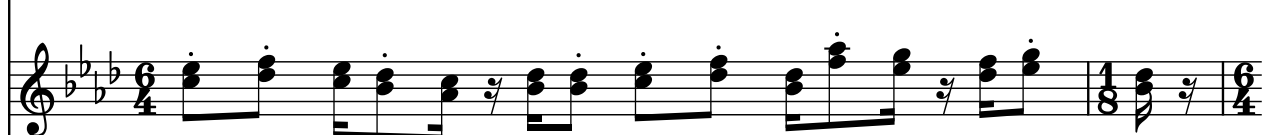


Vibraphone, Vibraphone



3

B. Guit.



Vib.

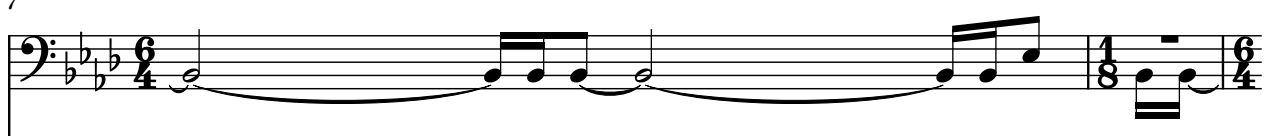


5

B. Guit.

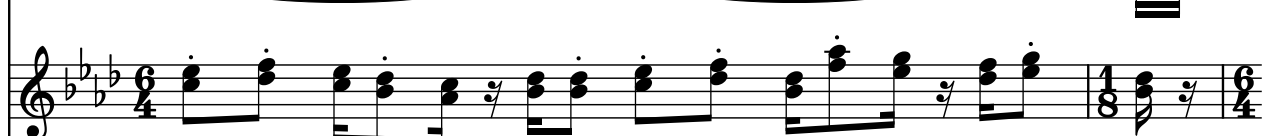


Vib.

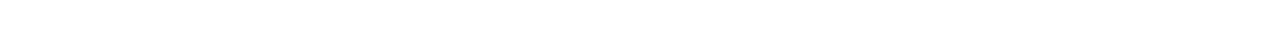


7

B. Guit.



Vib.



9

B. Guit.

Vib.

9

11

B. Guit.

Vib.

11

14

B. Guit.

Vib.

14

17

B. Guit.

Vib.

17

20

B. Guit.

Vib.

Measures 20-21. Bass guitar (B. Guit.) plays a melodic line in 6/4 time, starting with a half note G2, followed by eighth notes. Vibraphone (Vib.) parts are rests.

22

B. Guit.

Vib.

Measures 22-23. Bass guitar (B. Guit.) continues its melodic line. Vibraphone (Vib.) parts are rests.

25

B. Guit.

Vib.

Measures 25-26. Bass guitar (B. Guit.) continues its melodic line. Vibraphone (Vib.) parts consist of chords.

27

B. Guit.

Vib.

Measures 27-28. Bass guitar (B. Guit.) continues its melodic line. Vibraphone (Vib.) parts consist of chords.

29

B. Guit.

Vib.

Measures 29-30. Bass guitar (B. Guit.) has a long note. Vibraphone (Vib.) parts consist of chords.

31

B. Guit.

Vib.

31

33

B. Guit.

Vib.

33

35

B. Guit.

Vib.

35

37

B. Guit.

Vib.

37

40

B. Guit.

Vib.

Measures 40-42. Bass guitar (B. Guit.) plays a continuous eighth-note pattern in the bass clef. Vibraphone (Vib.) has whole rests in both staves.

43

B. Guit.

Vib.

Measures 43-45. Bass guitar (B. Guit.) plays eighth-note patterns with slurs. Vibraphone (Vib.) has whole rests in both staves.

46

B. Guit.

Vib.

Measures 46-47. Bass guitar (B. Guit.) plays eighth-note patterns with slurs. Vibraphone (Vib.) has whole rests in both staves.

48

B. Guit.

Vib.

Measures 48-50. Bass guitar (B. Guit.) plays eighth-note patterns with slurs. Vibraphone (Vib.) has whole rests in measures 48 and 49, and a final chord in measure 50.

51

B. Guit.

Vib.

Measures 51-53. Bass guitar (B. Guit.) plays eighth-note patterns with slurs. Vibraphone (Vib.) has chords in measures 51 and 52, and a final chord in measure 53.

53

B. Guit.

Vib.

53

55

B. Guit.

Vib.

55

57

B. Guit.

Vib.

57

59

B. Guit.

Vib.

59

61

B. Guit.

Vib.

61

62

63

B. Guit.

Vib.

63

64

65

66

B. Guit.

Vib.

66

67

68

69

B. Guit.

Vib.

69

70

71

72

B. Guit.

Vib.

Measures 72-73. The bass guitar part features a continuous eighth-note pattern in the left hand and a dotted quarter note in the right hand. The vibraphone part is silent.

74

B. Guit.

Vib.

Measures 74-75. The bass guitar part continues with eighth notes and a dotted quarter note. The vibraphone part remains silent.

77

B. Guit.

Vib.

Measures 77-78. The bass guitar part continues with eighth notes and a dotted quarter note. The vibraphone part enters with a series of chords.

79

B. Guit.

Vib.

Measures 79-80. The bass guitar part continues with eighth notes and a dotted quarter note. The vibraphone part continues with chords.

81

B. Guit.

Vib.

Measures 81-82. The bass guitar part features a half note in the left hand and a dotted quarter note in the right hand. The vibraphone part continues with chords.

83

B. Guit.

Vib.

83

85

B. Guit.

Vib.

85

87

B. Guit.

Vib.

87

89

B. Guit.

Vib.

89

92

B. Guit.

Vib.

Measures 92-94: Bass guitar plays a continuous eighth-note line in B-flat major. Vibraphone has whole rests.

95

B. Guit.

Vib.

Measures 95-97: Bass guitar has eighth-note patterns with slurs and accents. Vibraphone has whole rests.

98

B. Guit.

Vib.

Measures 98-99: Bass guitar continues eighth-note patterns. Vibraphone has whole rests.

100

B. Guit.

Vib.

Measures 100-102: Bass guitar has eighth-note patterns. Vibraphone has whole rests.

103

B. Guit.

Vib.

Measures 103-105: Bass guitar has eighth-note patterns. Vibraphone has chords and eighth-note patterns.

105

105

B. Guit.

Vib.

The musical score for measures 105-106 is presented in three staves. The key signature is three flats (B-flat, E-flat, A-flat) and the time signature is 6/4. The first staff, labeled 'B. Guit.', uses a bass clef and contains a melodic line with eighth and sixteenth notes, ending with a whole rest. The second staff, labeled 'Vib.', uses a treble clef and contains a series of chords, mostly dyads, with some triplets and a final whole rest. The third staff, also labeled 'Vib.', uses a treble clef and contains a series of chords, mostly dyads, with some triplets and a final whole rest.