

Two to Tango Carmelita Chase

Composer: Peter McConnell

Game: Sly Cooper and the Thievius Raccoonus

pianogame.org

♩ = 140

Electric Guitar, Dist Guitar



Electric Guitar, Overdriven #1



Contrabass Balalaika, Koto

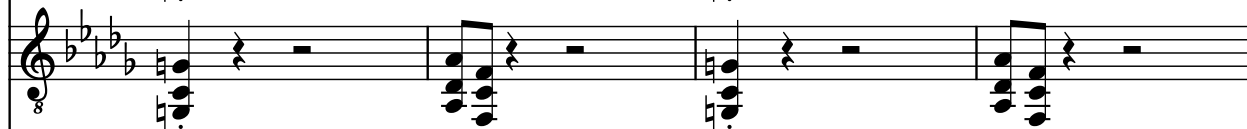


4

El. Guit.



El. Guit.

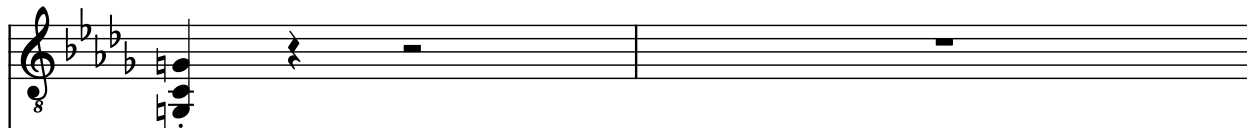


Cb. Bal.



8

El. Guit.



El. Guit.

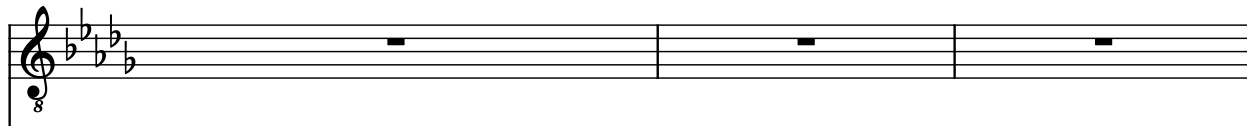


Cb. Bal.

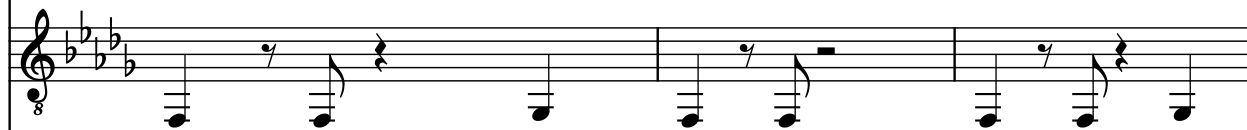


10

El. Guit.



El. Guit.



Cb. Bal.



13

El. Guit.

El. Guit.

Cb. Bal.

27

El. Guit. 

El. Guit. 

Cb. Bal. 


30

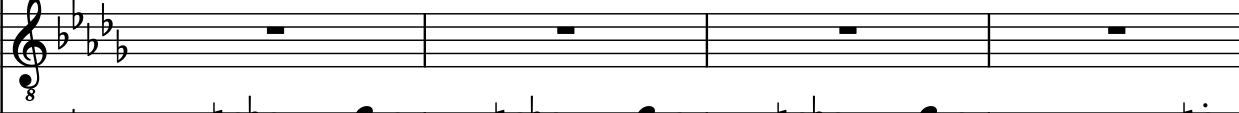
El. Guit. 


El. Guit. 

Cb. Bal. 


33


El. Guit. 


El. Guit. 

Cb. Bal. 

37

El. Guit. 

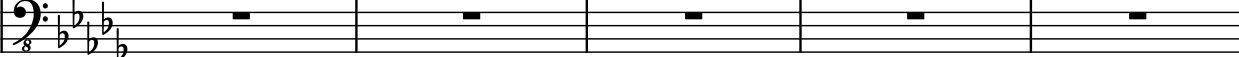
El. Guit. 

Cb. Bal. 

41

El. Guit. 

El. Guit. 

Cb. Bal. 

46

El. Guit.

El. Guit.

Cb. Bal.

51

El. Guit.

El. Guit.

Cb. Bal.

55

El. Guit.

El. Guit.

Cb. Bal.

58

El. Guit.

El. Guit.

Cb. Bal.

61

El. Guit.

El. Guit.

Cb. Bal.

64

El. Guit.

El. Guit.

Cb. Bal.

67

El. Guit.

El. Guit.

Cb. Bal.

71

El. Guit.

El. Guit.

Cb. Bal.

75

El. Guit. 

El. Guit. 

Cb. Bal. 

80

El. Guit. 

El. Guit. 

Cb. Bal. 

84

El. Guit. 

El. Guit. 

Cb. Bal. 

88

El. Guit. 

El. Guit. 

Cb. Bal. 

90

El. Guit.

El. Guit.

Cb. Bal.

93

El. Guit.

El. Guit.

Cb. Bal.

95

El. Guit.

El. Guit.

Cb. Bal.

99

El. Guit.

El. Guit.

Cb. Bal.

103

El. Guit.

El. Guit.

Cb. Bal.

8

107

El. Guit.

El. Guit.

Cb. Bal.

8

110

El. Guit.

El. Guit.

Cb. Bal.

8

113

El. Guit.

El. Guit.

Cb. Bal.

8

117

El. Guit.

El. Guit.

Cb. Bal.

Measures 117-120. The electric guitar parts are silent, while the double bass (Cb. Bal.) plays a rhythmic pattern of eighth and sixteenth notes.

121

El. Guit.

El. Guit.

Cb. Bal.

Measures 121-125. The electric guitar parts play a complex chordal pattern, while the double bass (Cb. Bal.) is silent.

126

El. Guit.

El. Guit.

Cb. Bal.

Measures 126-130. The electric guitar parts play a complex chordal pattern, while the double bass (Cb. Bal.) is silent.

131

El. Guit.

El. Guit.

Cb. Bal.

Measures 131-135. The electric guitar parts play a complex chordal pattern, while the double bass (Cb. Bal.) is silent.

135

El. Guit.

El. Guit.

Cb. Bal.

138

El. Guit.

El. Guit.

Cb. Bal.

141

El. Guit.

El. Guit.

Cb. Bal.

144

El. Guit.

El. Guit.

Cb. Bal.

147

El. Guit.

El. Guit.

Cb. Bal.

8

8

8

151

El. Guit.

El. Guit.

Cb. Bal.

8

8

8

155

El. Guit.

El. Guit.

Cb. Bal.

8

8

8

160

El. Guit.

El. Guit.

Cb. Bal.

8

8

8