

Party Combat (v3.14)

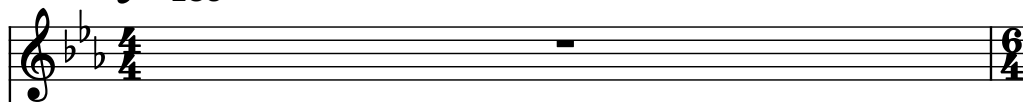
Composer: Kouji Murata

Game: Magic of Scheherazade, The

pianogame.org

♩ = 159

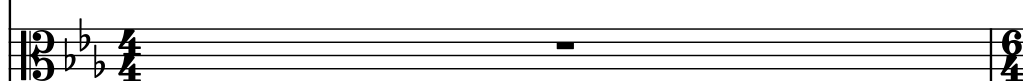
Violins (section), Violins I



Violins (section), Violins II



Viola, Violas I



2

Vlns.



Vlns.

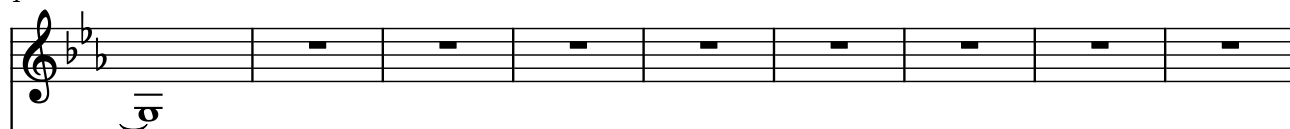


Vla.



4

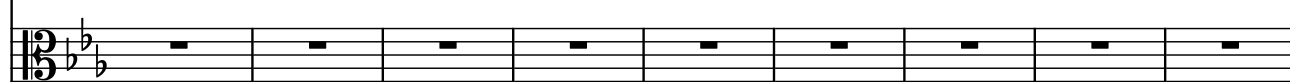
Vlns.



Vlns.



Vla.



13

Vlns.



Vlns.



Vla.

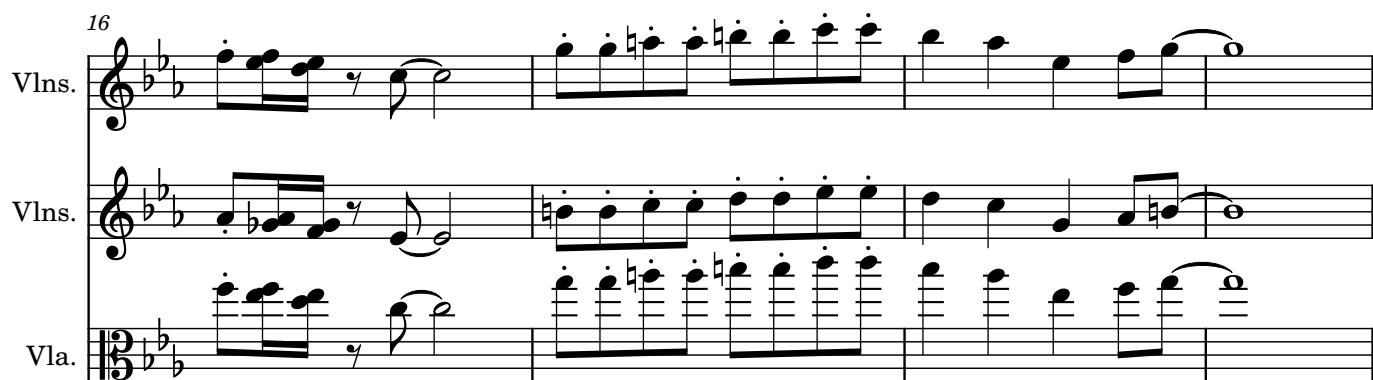


16

Vlns.

Vlns.

Vla.



20

Vlns.

Vlns.

Vla.

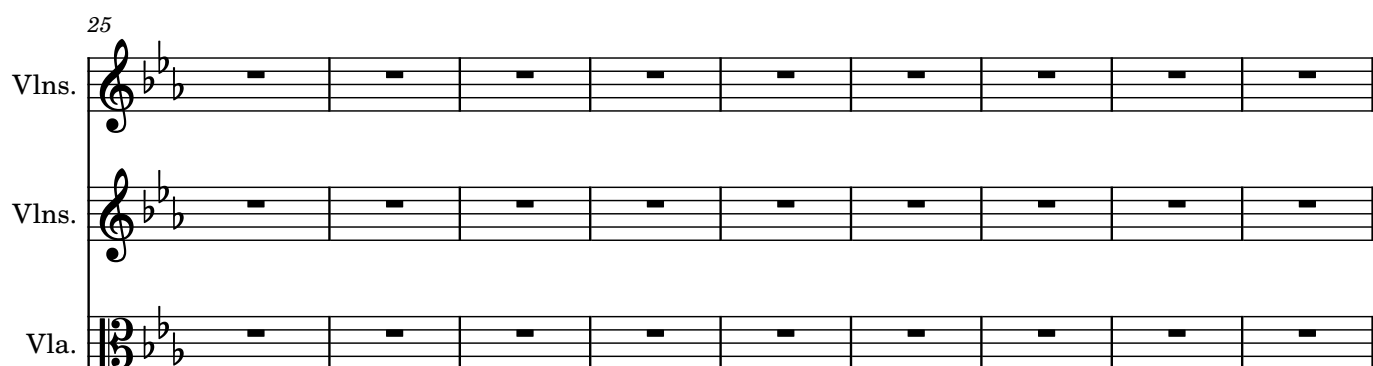


25

Vlns.

Vlns.

Vla.



34

Vlns.

Vlns.

Vla.



37

Vlms.

Vlms.

Vla.

41

Vlms.

Vlms.

Vla.

46

Vlms.

Vlms.

Vla.

55

Vlms.

Vlms.

Vla.

58

Vlns.

Vlns.

Vla.

62

Vlns.

Vlns.

Vla.

67

Vlns.

Vlns.

Vla.

76

Vlns.

Vlns.

Vla.

79

Vlns.

Vlns.

Vla.

This musical system contains measures 79 through 82. It features three staves: two Violins (Vlns.) in the upper positions and one Viola (Vla.) in the lower position. The key signature is B-flat major (two flats). The time signature is 3/4. The first violin part begins with a quarter rest, followed by a quarter note G4, a half note A4, and a quarter note B4. The second violin part begins with a quarter note G4, followed by a quarter note A4, a half note B4, and a quarter note C5. The viola part begins with a quarter note G4, followed by a quarter note A4, a half note B4, and a quarter note C5. The measures are connected by a brace on the left.

83

Vlns.

Vlns.

Vla.

This musical system contains measures 83 through 86. It features three staves: two Violins (Vlns.) in the upper positions and one Viola (Vla.) in the lower position. The key signature is B-flat major (two flats). The time signature is 3/4. The first violin part begins with a quarter rest, followed by a quarter note G4, a half note A4, and a quarter note B4. The second violin part begins with a quarter note G4, followed by a quarter note A4, a half note B4, and a quarter note C5. The viola part begins with a quarter note G4, followed by a quarter note A4, a half note B4, and a quarter note C5. The measures are connected by a brace on the left.