

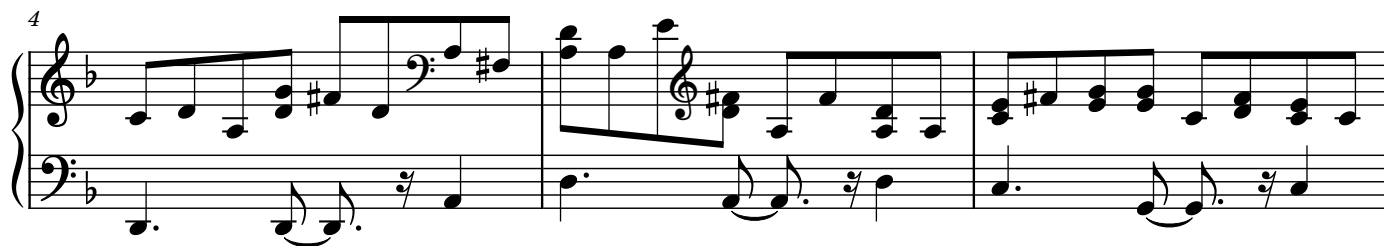
Tell A Strange Tale

Composer: Hiroki Kikuta

Game: Secret of Mana

pianogame.org

♩ = 140



22



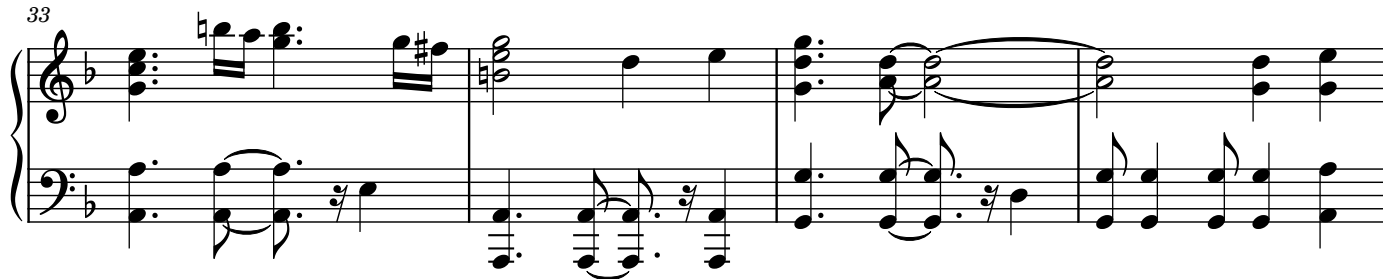
25



29



33



37



41



44

Measures 44 and 45 of a musical score. The key signature has one flat (B-flat). The right hand (treble clef) features a complex, fast-moving melody with many beamed sixteenth and thirty-second notes, including some triplets. The left hand (bass clef) plays a simpler, more rhythmic accompaniment with eighth and quarter notes.

46

Measures 46 and 47. The right hand continues with a dense, flowing melody. The left hand provides a steady accompaniment with quarter and eighth notes.

48

Measures 48 and 49. The right hand's melody remains intricate with many beamed notes. The left hand continues its accompaniment pattern.

50

Measures 50 and 51. The right hand's melody is highly active. The left hand's accompaniment consists of quarter and eighth notes.

52

Measures 52 and 53. The right hand's melody continues with complex rhythmic patterns. The left hand's accompaniment is consistent.

54

Measures 54 and 55. The right hand's melody is very active, featuring many beamed notes and some triplets. The left hand's accompaniment continues with quarter and eighth notes.

56

Measures 56-57 of a piano piece in B-flat major. The right hand features a complex, flowing melody with many beamed sixteenth and thirty-second notes, and some triplets. The left hand provides a steady accompaniment with eighth and sixteenth notes, including some triplet patterns.

58

Measures 58-59. The right hand continues its intricate melodic line with various ornaments and grace notes. The left hand maintains its rhythmic accompaniment with eighth and sixteenth notes.

60

Measures 60-61. The right hand's melody becomes more active with frequent sixteenth-note runs. The left hand continues with its accompaniment, featuring some triplet eighth notes.

62

Measures 62-63. The right hand has a very busy texture with many beamed notes and grace notes. The left hand continues with eighth and sixteenth notes.

64

Measures 64-65. The right hand's melody features a prominent triplet of eighth notes. The left hand continues with its accompaniment.

66

Measures 66-67. The right hand continues with its complex melodic line. The left hand concludes the passage with a final chord in the right hand.

68

Measures 68-69 of a piano piece. The key signature has one flat (B-flat). The right hand features a complex melodic line with many beamed sixteenth and thirty-second notes, including some triplets. The left hand provides a steady accompaniment with eighth and quarter notes. Measure 69 ends with a repeat sign.

70

Measures 70-71. The right hand continues with intricate sixteenth-note patterns. The left hand has a more active role with eighth-note runs. Measure 71 ends with a repeat sign.

72

Measures 72-73. The right hand's melody is highly rhythmic with frequent sixteenth-note groups. The left hand maintains a consistent eighth-note accompaniment. Measure 73 ends with a repeat sign.

74

Measures 74-75. The right hand features a series of beamed sixteenth notes. The left hand has a simple eighth-note accompaniment. Measure 75 ends with a repeat sign.

76

Measures 76-77. The right hand has a more melodic line with some longer notes and grace notes. The left hand continues with eighth-note accompaniment. Measure 77 ends with a repeat sign.

78

Measures 78-81. The right hand has a complex texture with many beamed sixteenth notes and some triplets. The left hand has a steady eighth-note accompaniment. Measure 81 ends with a repeat sign.

81

Measures 81 and 82 of a piano piece. The key signature has one flat (B-flat). Measure 81 features a complex right-hand melody with many beamed sixteenth and thirty-second notes, and a left-hand accompaniment of eighth and sixteenth notes. Measure 82 continues the right-hand melody with similar rhythmic complexity and adds a sustained chord in the left hand.

83

Measures 83 and 84. Measure 83 shows a continuation of the intricate right-hand texture with rapid sixteenth-note passages. The left hand provides a steady accompaniment. Measure 84 features a more active left-hand line with eighth-note patterns.

85

Measures 85, 86, and 87. Measure 85 has a right-hand melody with a long, sweeping slur. Measures 86 and 87 feature a complex right-hand texture with multiple voices and a left-hand accompaniment of eighth notes.

88

Measures 88, 89, and 90. Measure 88 begins with a right-hand melody featuring a long slur. Measures 89 and 90 show a continuation of the right-hand melody with a left-hand accompaniment of eighth notes. The piece concludes with a final chord in measure 90.